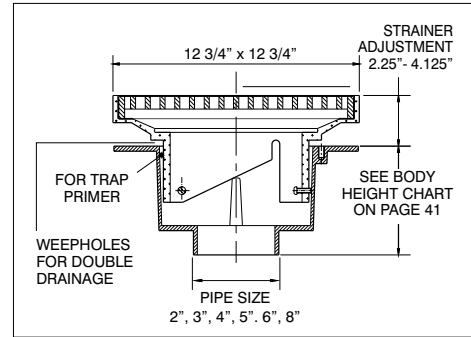
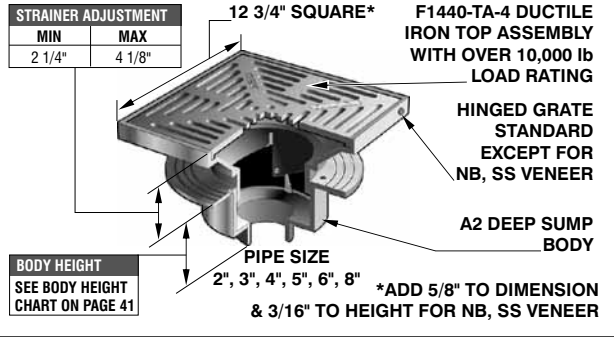


F1440 SERIES AREA DRAIN WITH 12" SQ. ADJ. HEAVY DUTY HINGED TRACTOR GRATE F1440 SERIES



(*) Denotes strainer finish (-1, -3, or -4)

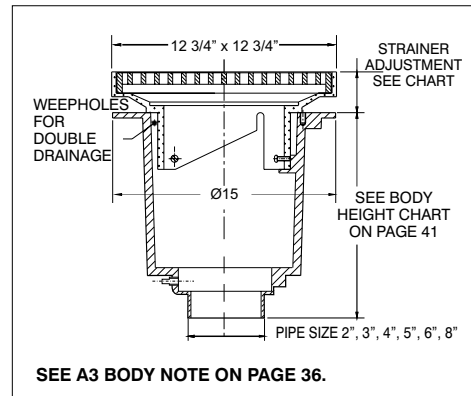
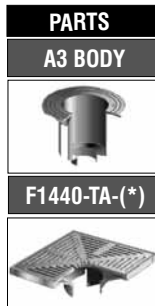
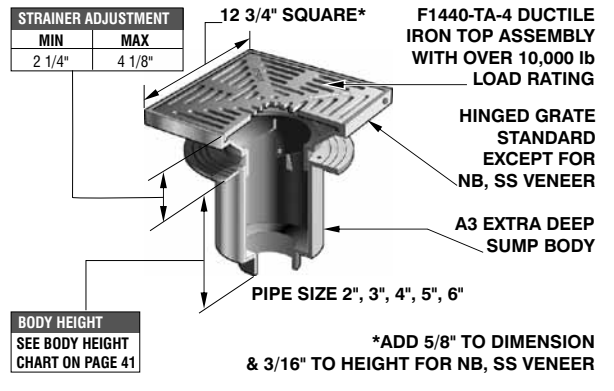
AREA DRAIN WITH 12" SQUARE ADJUSTABLE HEAVY DUTY HINGED TRACTOR GRATE					
MODEL NUMBER	WT. Lbs	STRAINER DESCRIPTION	LIST PRICE LACQUERED CAST IRON BODY WITH:		
			DUCTILE IRON (-4)	NICKEL BRONZE (VENEER) (-1)	STAINLESS STEEL (VENEER) (-3)
F1442,3,4,6,8	52.75	12" x 12" Adj. tractor grate	\$1216.00	\$1978.00	\$1978.00
F1442,3,4,6,8-Y	52.75	12" x 12" Non-Adj. tractor grate	\$ 645.00	\$1210.00	\$1210.00
F1442,3,4,6,8-Y-14	52.75	12" x 12" Non-Adj. flat grate with shallow body	\$ 769.00	\$1334.00	\$1334.00

WHEN A MEMBRANE CLAMP IS REQUIRED, ADD SUFFIX (-C), NO ADD.

F1440, F1450, F1460 AND F1470 OPTIONAL VARIATIONS:					
SUFFIX	DESCRIPTION	F1440	F1450	F1460	F1470
-5	Sediment bucket (A2-MB)	\$ 124.00	\$ 124.00	\$ 124.00	\$ 124.00
-6	Vandal proof secured grate (TR30 Torx and pin)	\$ 76.00	\$ 76.00	\$ 76.00	\$ 76.00
-7	Trap seal primer tapping	\$ 77.00	\$ 77.00	\$ 77.00	\$ 77.00
-8	Backwater valve (BV1250 Series) (2", 3", 4")	\$ 195.00	\$ 195.00	\$ 195.00	\$ 195.00
-11	Acid resistant epoxy coating (Min. order 25 pcs. or P.O.A)	\$ 480.00	\$ 642.00	\$ 719.00	\$ 777.00
-12	Galvanized grate and frame (Min. order 25 pcs. or P.O.A)	\$ 231.00	\$ 231.00	\$ 362.00	\$ 389.00
-13	All galvanized (Min. order 25 pcs. or P.O.A)	\$ 458.00	\$ 458.00	\$ 713.00	\$ 777.00
-15	Extension (per 2") (A2-XY)	\$ 124.00	\$ 124.00	\$ 124.00	\$ 124.00
-20	Secondary dome strainer (FS1500-PD)	\$ 76.00	\$ 76.00	\$ 76.00	\$ 76.00
-21	Secondary flat strainer (FD-9600 Series)	\$ 31.00	\$ 31.00	\$ 31.00	\$ 31.00
-24	Solid secured cover	P.O.A.	P.O.A.	P.O.A.	P.O.A.
-28	Stainless Steel Body (Type 304) (2", 3", 4" No Hub)	P.O.A.	P.O.A.	P.O.A.	P.O.A.
-30	PVC Socket Connection Body* (2", 3", 4")	No Add	No Add	No Add	No Add
-31	ABS Socket Connection Body* (2", 3", 4")	No Add	No Add	No Add	No Add
-32	2", 3", 4" Integral deep seal trap (MI-950 Series)	\$ 226.00	\$ 226.00	\$ 226.00	\$ 226.00
-34	Closure plug (C1440 Series)	\$ 187.00	\$ 187.00	\$ 187.00	\$ 187.00

*PVC/ABS Socket bodies available for 2", 3" or 4" connection sizes

F1450 SERIES AREA DRAIN WITH 12" SQ. ADJ. HEAVY DUTY HINGED TRACTOR GRATE & EXTRA DEEP SUMP F1450 SERIES



(*) Denotes strainer finish (-1, -3, or -4)

AREA DRAIN WITH 12" SQUARE ADJUSTABLE HEAVY DUTY HINGED TRACTOR GRATE & EXTRA DEEP SUMP					
MODEL NUMBER	WT. Lbs	STRAINER DESCRIPTION	LIST PRICE LACQUERED CAST IRON BODY WITH:		
			DUCTILE IRON (-4)	NICKEL BRONZE (VENEER) (-1)	STAINLESS STEEL (VENEER) (-3)
F1452,3,4,6	61.00	12" x 12" Adj. tractor grate	\$ 1673.00	\$ 2434.00	\$ 2434.00
F1452,3,4,6-14	61.00	12" x 12" Adj. flat grate	\$ 1287.00	\$ 1692.00	\$ 1692.00
F1452,3,4,6-Y	61.00	12" x 12" Non-Adj. tractor grate	\$ 974.00	\$ 1516.00	\$ 1516.00
F1452,3,4,6-Y-14	61.00	12" x 12" Non-Adj. flat grate	\$ 930.00	\$ 1495.00	\$ 1495.00

WHEN A MEMBRANE CLAMP IS REQUIRED, ADD SUFFIX (-C), NO ADD.

Design and dimensions are subject to modification. Prices do not include applicable taxes. Visit www.mifab.com for the most recent product information.

MIFAB, Inc., 1321 West 119th Street, Chicago, Illinois 60643-5109, USA

Toll Free 1-800-465-2736, Fax 773-341-3049

All sales subject to MIFAB's Terms and Warranties. Please refer to inside front cover.