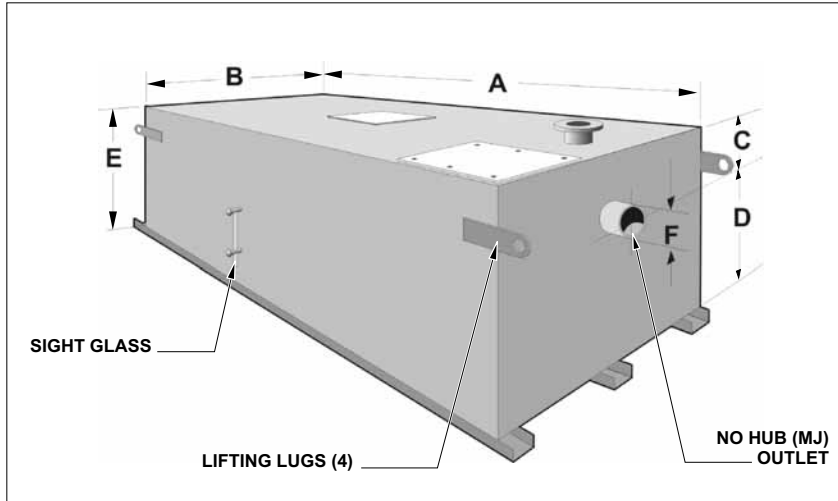


MI-HEL SERIES HELIPORT FUEL SPILL INTERCEPTORS

**MI-HEL
SERIES**



The MIFAB® MI-HEL heliport fuel spill interceptor is designed for use where there is the potential of an aircraft fuel leak entering the storm sewer system, (such as a roof top helipad), where the regular roof drains are connected to a municipal storm sewer system. The MI-HEL is constructed from high strength 1/4" plate steel and features: outlet vent connection, internal vent connection, gasketed access covers with stainless steel bolts, 2" fuel drain connection, 1" fresh water inlet supply connection with gate valve, back flow preventer, automatic water level controlling float valve, external sight glass level indicator with drain cocks, 2" interceptor drain plugs, channel support rails and body corner lifting lugs. The unit is regularly furnished with a two part epoxy interior and exterior coating.

INTERCEPTORS

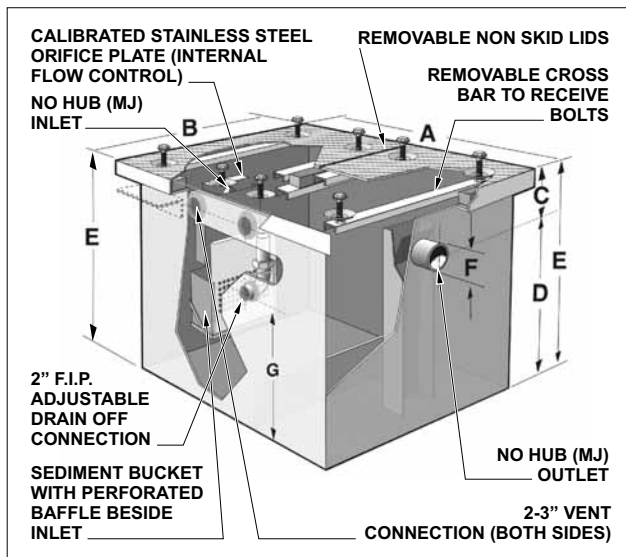
MODEL NO.	STATIC VOLUME CAP. USG	STATIC VOLUME CU. FT.	FUEL RETENTION CAP. USG	A IN	B IN	C IN	D IN	E IN	F IN
MI-HEL-1	135	18.0	35	90	36	12	36	48	6
MI-HEL-2	175	23.3	65	126	48	12	36	48	6
MI-HEL-3	200	26.6	90	132	63	12	36	48	6
MI-HEL-4	300	40.0	195	192	92	12	36	48	6
MI-HEL-5	350	46.6	220	213	96	12	36	48	6
MI-HEL-6	400	52.48	250	240	96	12	36	48	6

MODEL NO.	FUEL CAP. USG	LIST PRICE	SHIPPING WEIGHT LBS.
MI-HEL-1	35	P.O.A.	1,984
MI-HEL-2	65	P.O.A.	2,975
MI-HEL-3	90	P.O.A.	3,524
MI-HEL-4	195	P.O.A.	6,200
MI-HEL-5	220	P.O.A.	6,800
MI-HEL-6	250	P.O.A.	7,200

NOTE: Add SUFFIX "TO" for top outlet, no add

MI-SAND/OIL SERIES SAND AND OIL INTERCEPTOR

**MI-SAND/OIL
SERIES**



MODEL NO.	LIQUID HOLDING CAP. USG	A IN	B IN	C IN	D IN	E IN	F IN	G IN	NO. OF LIDS/BOLTS
MI-SO-0	108.9	42	28	6	26	32	4	19	2 8
MI-SO-1	192.7	55	37	8	26	34	4	19	2 8
MI-SO-2	226.9	58	38	8	28	36	4	21	3 12
MI-SO-3	264.6	61	39	8	28	36	4	23	3 12
MI-SO-4	395.6	70	44	10	34	44	4	27	6 24
MI-SO-5	500.6	75	46	10	38	48	4	31	6 24
MI-SO-6	579.7	77	49	12	40	52	6	32	6 24
MI-SO-7*	612.2	80	51	12	40	52	6	36	8 24
MI-SO-8*	785.9	84	56	14	44	58	6	46	8 32
MI-SO-9*	1172.3	92	61	14	54	68	6	46	8 32
MI-SO-10*	1807.8	102	74	14	62	76	8	53	9 36
MI-SO-11*	2105.3	108	76	14	66	80	8	57	9 36

NOTE: The "A" and "B" dimensions represent the largest dimension of the interceptor (lid). Since the lid overhangs the body by 1/2" on all sides, deduct 1" from the stated dimensions in the charts above to determine the actual body length & width

NOTE: The "C" dimension is from the center of the inlet/outlet (invert) to the top of the interceptor. Inlet & outlet "C" dimensions are always the same

Optional high level alarm. SUFFIX "-HLA" available P.O.A. Optional aluminum lid, Suffix -AL, P.O.A.

MODEL NO.	HOLDING CAPACITY USG	LIST PRICE	SHIPPING WEIGHT LBS.	BOLT ON EXTENSION (PER 3") (Add)	ADDITIONAL "C" UP TO 6" "-C" (Add)	PER "1" OF "C" DIM. OVER "6" (Add)	ANCHOR FLANGE "-FL" (Add)	FLANGE & MEMBRANE CLAMP "-FLM" (Add)	HEAVY DUTY REINFORCED LID "-HD" (10,000 Lbs LIVE LOAD) (Add)
MI-SO-0	109	\$22,393.00	545	P.O.A.	\$ 685.00	\$ 106.00	\$ 981.00	\$1,475.00	\$ 878.00
MI-SO-1	193	\$33,031.00	625	P.O.A.	\$ 842.00	\$ 139.00	\$1,122.00	\$1,687.00	\$1,104.00
MI-SO-2	227	\$43,001.00	725	P.O.A.	\$1,212.00	\$ 193.00	\$2,246.00	\$1,614.00	\$1,614.00
MI-SO-3	265	\$43,945.00	1075	P.O.A.	\$1,474.00	\$ 228.00	\$2,527.00	\$3,375.00	\$1,840.00
MI-SO-4	396	\$48,004.00	1185	P.O.A.	\$1,682.00	\$ 246.00	\$2,804.00	\$3,584.00	\$2,000.00
MI-SO-5	580	\$49,510.00	1265	P.O.A.	\$2,034.00	\$ 281.00	\$3,368.00	\$4,428.00	\$2,209.00
MI-SO-6	612	\$58,956.00	1385	P.O.A.	\$2,246.00	\$ 333.00	\$4,210.00	\$5,481.00	\$2,772.00

NOTE: Add SUFFIX "-T" for threaded inlet & outlet, no add.

MI-SO-7 and larger "Call for Quote"

Design and dimensions are subject to modification. Prices do not include applicable taxes. Visit www.mifab.com for the most recent product information.

MIFAB, Inc., 1321 West 119th Street, Chicago, Illinois 60643-5109, USA

Toll Free 1-800-465-2736, Fax 773-341-3049

All sales subject to MIFAB's Terms and Warranties. Please refer to inside front cover.