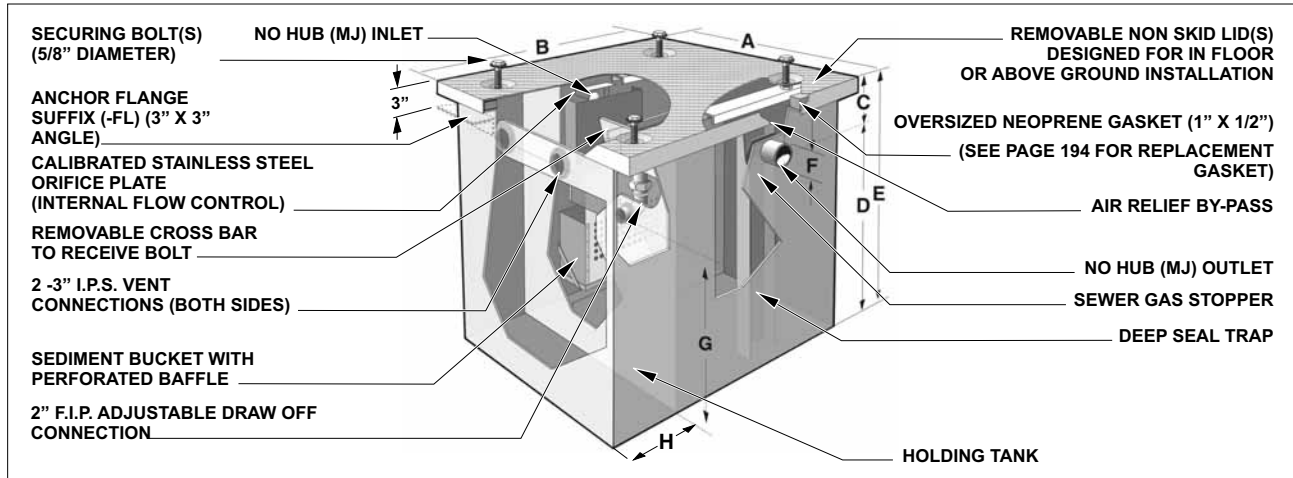


MI-O-HU SERIES 10 to 500 US G.P.M. OIL INTERCEPTOR WITH INTEGRAL OIL STORAGE TANK

MI-O-HU SERIES

INTERCEPTORS



MIFAB is a recognized industry leader in the field of interceptor design and production.

As such, we offer a variety of specialized options and site-specific applications too numerous to list in this price guide. For features such as sacrificial anode packs, all stainless steel construction and a variety of other special features, please see our Engineering Catalog or consult your local MIFAB representative.

Optional high level alarm: **Suffix "-HLA"** available P.O.A. Optional aluminum lid(s), **Suffix "-AL"**, P.O.A.

MODEL NO.	US GPM	A IN	B IN	C IN	D IN	E IN	F IN	G IN	H IN	INTERCEPTOR HOLDING CAP.			HOLDING TANK CAP.			TOTAL OPERATING LBS.	NO. OF LIDS	NO. OF BOLTS
										CU. FT. of liquid	Lbs. of liquid	U.S.G. of liquid	CU. FT. of liquid	Lbs. of liquid	U.S.G. of liquid			
MI-O-HU-A	10	24	26	4	9	13	2	4	10	1.47	91.74	10.99	2.50	156.12	11.12	326.12	1	2
MI-O-HU-B	15	26	26.50	4	11	15	2	6	10	2.07	129.37	15.50	3.47	217.08	15.67	400.08	1	2
MI-O-HU-C	20	26	26.50	4	13.50	17.5	3	8	10	2.48	155.25	18.60	4.17	260.50	18.80	457.50	1	2
MI-O-HU-1	25	29	46	4.5	25.5	30	3	20	21.5	8.61	538.14	64.48	16.75	1046.71	65.46	1466.71	2	4
MI-O-HU-2	35	37	44.5	5	26	31	3	20.5	15.5	13.62	851.19	102.00	21.37	1335.36	102.93	1880.36	4	8
MI-O-HU-3	50	43	65.5	6	26	32	3	20.5	26.0	21.80	1362.44	163.26	36.91	2307.07	165.07	3087.07	6	8
MI-O-HU-4	75	49	65	9.5	26.5	36	4	20.5	22.5	26.99	1686.77	202.12	41.98	2623.86	203.92	3513.86	6	8
MI-O-HU-5	100	58	90	9.5	26.5	36	4	20.5	37	40.49	2530.82	303.26	69.87	4366.90	306.78	5866.90	6	12
MI-O-HU-6	125	62	90	12	28	40	4	22	37	46.04	2877.60	344.82	79.44	4965.28	348.82	6580.28	6	12
MI-O-HU-7	150	66	76	14	30	44	4	24	28	47.70	2981.48	357.27	76.74	4796.30	360.75	6536.30	6	12
MI-O-HU-8	200	73.25	90	17	30.5	48	4	24.5	36.5	60.52	3782.45	453.25	103.41	6463.22	458.38	8803.22	9	18
MI-O-HU-9	250	73.25	90	15.5	35.5	51	4	29.5	31	78.73	4920.86	589.66	121.55	7597.11	594.79	9997.11	9	18
MI-O-HU-10	300	94.875	86	15.5	36.5	52	6	29.5	23.5	108.93	6808.25	815.82	151.24	9452.77	820.89	12312.77	9	18
MI-O-HU-11	350	100.875	94	16.5	43.5	60	6	36.5	30.5	142.52	8907.44	1067.36	213.20	13324.95	1075.83	16624.95	9	18
MI-O-HU-12	400	107.875	91	17	43	60	6	36	28.5	148.27	9267.13	1110.47	218.12	13632.63	1118.84	17052.63	9	18
MI-O-HU-13	450	118.875	83	17	43	60	6	36	26.0	148.80	9299.95	1114.40	219.14	13696.29	1122.83	17236.29	9	18
MI-O-HU-14	500	118.875	83	20	46	66	6	39	24.0	165.78	10360.99	1241.54	235.58	14723.51	1249.91	18483.51	9	18

NOTE: The "A" and "B" dimensions represent the largest dimension of the interceptor (lid). Since the lid overhangs the body by 1/2" (13) on all sides, deduct 1" (25) from the stated dimensions in the charts below to determine the actual body length & width.

NOTE: The "C" dimension is from the center of the inlet/outlet (invert) to the top of the interceptor. Inlet & outlet "C" dimensions are always the same.

MODEL NO.	US GPM	LIST PRICE	SHIPPING WEIGHT LBS.	BOLT ON EXTENSION (PER 3") (Add)	ADDITIONAL "C" UP TO 6" "-C" (Add)	PER "1" OF "C" DIM. OVER "6" (Add)	ANCHOR FLANGE "-FL" (Add)	FLANGE & MEMBRANE CLAMP "-FLM" (Add)	HEAVY DUTY REINFORCED LID "-HD" (10,000 Lbs. LIVE LOAD) (Add)
MI-O-HU-A	10	\$ 4,555.00	170	P.O.A.	\$ 4,207.00	\$175.00	\$1,139.00	\$1,369.00	\$ 4,909.00
MI-O-HU-B	15	\$ 6,144.00	183	P.O.A.	\$ 4,247.00	\$211.00	\$1,139.00	\$1,369.00	\$ 5,376.00
MI-O-HU-C	20	\$ 7,431.00	197	P.O.A.	\$ 4,374.00	\$240.00	\$1,232.00	\$1,369.00	\$ 5,694.00
MI-O-HU-1	25	\$ 7,838.00	420	P.O.A.	\$ 4,492.00	\$263.00	\$1,286.00	\$1,527.00	\$ 6,008.00
MI-O-HU-2	35	\$ 9,799.00	545	P.O.A.	\$ 4,659.00	\$284.00	\$1,337.00	\$1,580.00	\$ 6,325.00
MI-O-HU-3	50	\$13,190.00	780	P.O.A.	\$ 5,565.00	\$338.00	\$1,369.00	\$1,808.00	\$ 6,647.00
MI-O-HU-4	75	\$22,852.00	890	P.O.A.	\$ 2,287.00	\$211.00	\$1,505.00	\$2,720.00	\$ 6,990.00
MI-O-HU-5	100	\$24,789.00	1,500	P.O.A.	\$ 2,386.00	\$221.00	\$1,687.00	\$3,037.00	\$ 9,634.00
MI-O-HU-6	125	\$28,885.00	1,615	P.O.A.	\$ 2,443.00	\$240.00	\$2,004.00	\$3,404.00	\$10,564.00
MI-O-HU-7	150	\$30,427.00	1,740	P.O.A.	\$ 2,523.00	\$252.00	\$2,341.00	\$3,765.00	\$12,366.00
MI-O-HU-8	200	\$43,336.00	2,340	P.O.A.	\$ 4,006.00	\$263.00	\$2,498.00	\$4,395.00	\$14,105.00
MI-O-HU-9	250	\$50,203.00	2,400	P.O.A.	\$ 5,385.00	\$295.00	\$3,353.00	\$5,694.00	\$19,452.00
MI-O-HU-10	300	\$56,846.00	2,860	P.O.A.	\$ 6,642.00	\$338.00	\$3,784.00	\$6,411.00	\$24,984.00
MI-O-HU-11	350	\$63,455.00	3,300	P.O.A.	\$ 8,248.00	\$372.00	\$4,217.00	\$7,084.00	\$29,469.00
MI-O-HU-12	400	\$73,076.00	3,420	P.O.A.	\$ 9,429.00	\$401.00	\$4,480.00	\$7,476.00	\$33,927.00
MI-O-HU-13	450	\$83,485.00	3,540	P.O.A.	\$11,187.00	\$421.00	\$4,738.00	\$7,989.00	\$38,776.00
MI-O-HU-14	500	\$92,170.00	3,760	P.O.A.	\$12,972.00	\$441.00	\$5,020.00	\$8,434.00	\$41,467.00

NOTE: Add Suffix "-T" for threaded inlet & outlet, no add.

*See MI-O-HU Series for integral holding tank series Oil interceptors from MIFAB.

Design and dimensions are subject to modification. Prices do not include applicable taxes. Visit www.mifab.com for the most recent product information.

MIFAB, Inc., 1321 West 119th Street, Chicago, Illinois 60643-5109, USA

Toll Free 1-800-465-2736, Fax 773-341-3049

All sales subject to MIFAB's Terms and Warranties. Please refer to inside front cover.