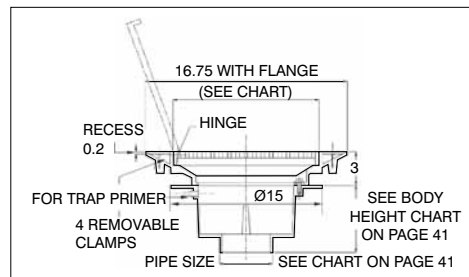
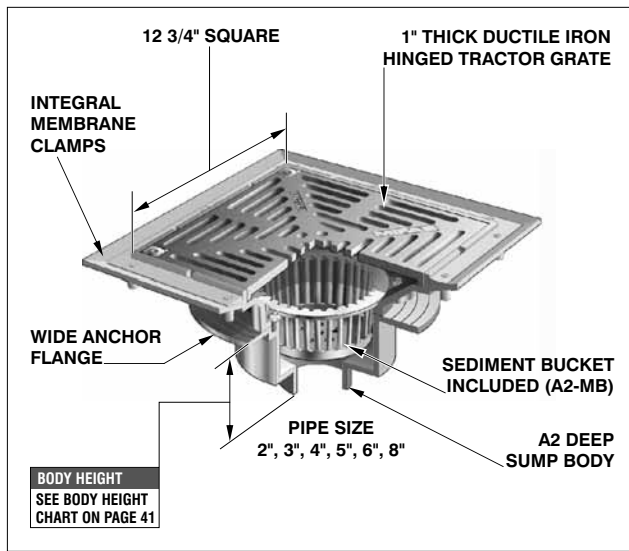


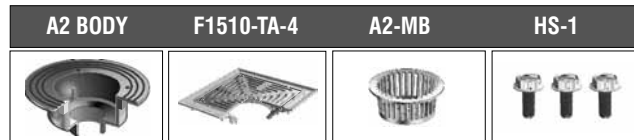
F1510
SERIES

12" x 12" EPOXY COATED PARKING AREA FLOOR DRAIN WITH HEAVY DUTY HINGED TRACTOR GRATE & SEDIMENT BUCKET (CONFORMS TO CSA STD. S413-94)

F1510
SERIES



PARTS



EPOXY COATED PARKING AREA FLOOR DRAIN		
MODEL NUMBER	WT. Lbs	EPOXY COATED CAST IRON BODY WITH DUCTILE IRON HINGED GRATE (-4)
F1512,3,4,6,8	55.00	\$1987.00

F1510 OPTIONAL VARIATIONS:

SUFFIX	DESCRIPTION	LIST PRICE	SUFFIX	DESCRIPTION	LIST PRICE
-6	Vandal proof secured grate (Tr30 Torx and pin)	\$ 76.00	-80	All Aluminum	No Add
-7	Trap seal primer tapping	\$ 77.00	-C	Membrane clamp	Standard
-8	Backwater valve (BV1250 Series) (2", 3", 4")	\$ 195.00	-TE	2" Extension	P.O.A.

F1530 OPTIONAL VARIATIONS:

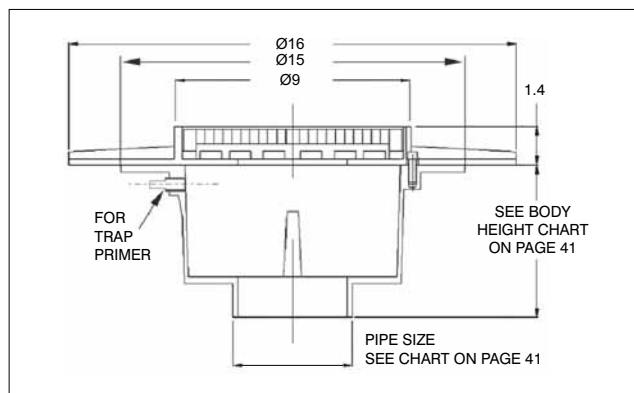
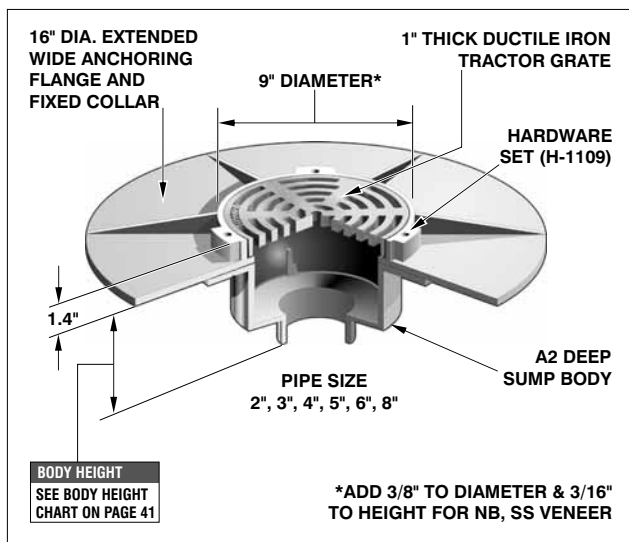
SUFFIX	DESCRIPTION	LIST PRICE	SUFFIX	DESCRIPTION	LIST PRICE
-5	Sediment bucket (FS1750-PB)	\$ 71.00	-13	All galvanized (Min. order 25 pcs or P.O.A.)	\$383.00
-6	Vandal proof secured grate (TR30Torx and pin)	\$ 76.00	-30	PVC Socket Connection Body* (2", 3", 4")	No Add
-7	Trap seal primer tapping	\$ 77.00	-31	ABS Socket Connection Body* (2", 3", 4")	No Add
-8	Backwater valve (BV1250 Series) (2", 3", 4")	\$195.00	-90	Threaded side outlet (2", 3", or 4")	\$190.00
-11	Acid resistant epoxy coating (Min. order 25 pcs. or P.O.A.)	\$383.00	P	Push on outlet (2", 3", 4" or 6")	No Add
-12	Galvanized grate (Min. order 25 pcs. or P.O.A.)	\$193.00	T	Threaded outlet (2", 3", 4" or 6")	\$ 40.00
			X	Inside caulk outlet (2", 3", 4" or 6")	No Add

*PVC/ABS Socket bodies available for 2", 3" or 4" connection sizes

F1530
SERIES

PARKING AREA DRAIN WITH 9" ROUND HEAVY DUTY TRACTOR GRATE W/DEEP SUMP & HEAVY DUTY MEMBRANE COLLAR W/SEEPAGE OPENINGS

F1530
SERIES



PARKING AREA DRAIN WITH 9" ROUND HEAVY DUTY TRACTOR GRATE

MODEL NUMBER	WT. Lbs	STRAINER DESCRIPTION	LIST PRICE LACQUERED CAST IRON BODY WITH:		
			DUCTILE IRON (-4)	NICKEL BRONZE (VENEER) (-1)	STAINLESS STEEL (VENEER) (-3)
F1532,3,4,6,8	45.00	9" Dia. tractor grate	\$ 626.00	\$907.00	\$907.00

Design and dimensions are subject to modification. Prices do not include applicable taxes. Visit www.mifab.com for the most recent product information.

MIFAB, Inc., 1321 West 119th Street, Chicago, Illinois 60643-5109, USA

Toll Free 1-800-465-2736, Fax 773-341-3049

All sales subject to MIFAB's Terms and Warranties. Please refer to inside front cover.

PARKING AREA DRAINS