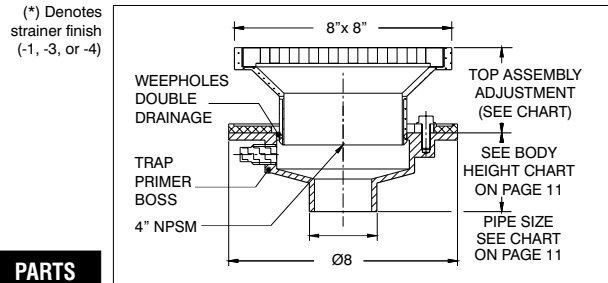
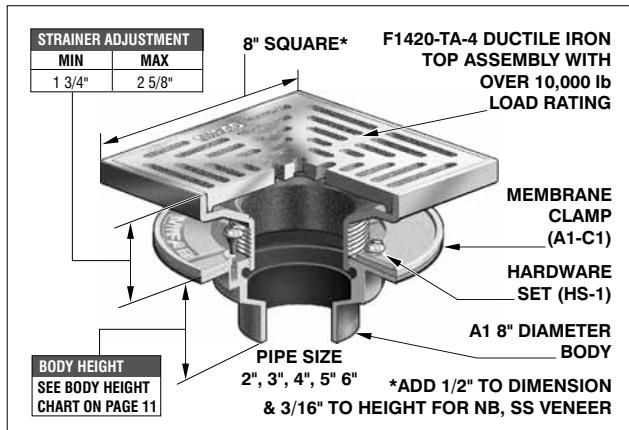


## F1420-C SERIES AREA DRAIN WITH 8" SQUARE ADJUSTABLE HEAVY DUTY TRACTOR GRATE F1420-C SERIES



PARTS			
A1 BODY	F1420-TA-(* )	A1-C1	HS-1

### F1420-C AREA DRAIN WITH 8" SQUARE ADJUSTABLE HEAVY DUTY TRACTOR GRATE

MODEL NUMBER	WT. Lbs	STRAINER DESCRIPTION	LIST PRICE LACQUERED CAST IRON BODY WITH:		
			DUCTILE IRON (-4)	NICKEL BRONZE (VENEER) (-1)	STAINLESS STEEL (VENEER) (-3)
F1422,3,4,6-C	17.00	8" x 8" Adj. tractor grate	\$541.00	\$830.00	\$830.00
F1422,3,4,6-C-Y-14	17.00	8" x 8" Non-Adj. flat grate	\$426.00	\$741.00	\$741.00
F1422,3,4,6-C-Y	17.00	8" x 8" Non-Adj. tractor grate	\$495.00	\$815.00	\$815.00

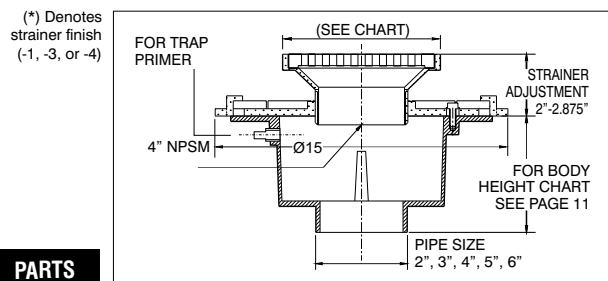
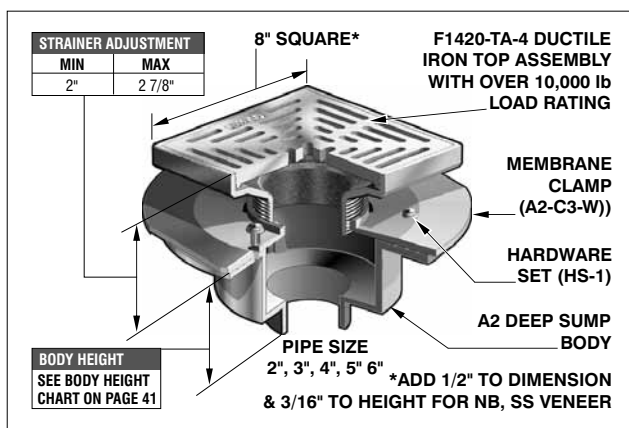
WHEN NO MEMBRANE CLAMP IS REQUIRED, DELETE SUFFIX (-C) AND DEDUCT \$43.00

### F1420-C & F1430C OPTIONAL VARIATIONS:

SUFFIX	DESCRIPTION	F1420-C	F1430C	SUFFIX	DESCRIPTION	F1420-C	F1430C
-5	Sediment bucket (A1-MB)	\$ 71.00	\$ 71.00	-41	Sump receiver (A1-BP)	\$132.00	\$139.00
-6	Vandal proof secured grate (TR30 Torx and pin)	\$ 76.00	\$ 76.00	-90	Threaded side outlet (2", 3")	\$112.00	\$190.00
-7	Trap seal primer tapping	Standard	\$ 77.00	-90	Threaded side outlet (4")	\$159.00	\$190.00
-8	Backwater valve (BV1250 Series) (2", 3", 4")	\$195.00	\$195.00	-F4-(1,3)	4" NB or SS round funnel	\$218.00	\$218.00
-11	Acid resistant epoxy coating (Min. order 25 pcs. or P.O.A.)	\$256.00	\$377.00	-F4-50	4" cast iron round funnel	\$ 91.00	\$ 91.00
-12	Galvanized grate and frame (Min. order 25 pcs. or P.O.A.)	\$132.00	\$148.00	-F6-(1,3)	6" NB or SS round funnel	\$325.00	\$325.00
-13	All galvanized (Min. order 25 pcs. or P.O.A.)	\$256.00	\$258.00	-F6-50	6" cast iron round funnel	\$147.00	\$147.00
-15	Extension (DD-50)	\$ 71.00	\$ 71.00	-G-(1,3)	4" x 9" NB or SS oval funnel	\$454.00	\$454.00
-21	Secondary flat strainer (FD-9600 Series)	\$ 31.00	\$ 31.00	-G-50	4" x 9" Cast iron oval funnel	\$218.00	\$218.00
-28	Stainless Steel body (Type 304) (2", 3", 4")	P.O.A.	P.O.A.	-J-(1,3)	3" x 1" NB or SS oval funnel	P.O.A.	P.O.A.
-30	PVC Socket Connection Body (2", 3", 4")	No Add	No Add	-J-50	3" x 1" cast iron oval funnel	P.O.A.	P.O.A.
-31	ABS Socket Connection Body (2", 3", 4")	No Add	No Add	P	Push on outlet (2", 3" or 4")	No Add	No Add
-32	2", 3", 4" Integral deep seal trap (MI-950 Series)	\$226.00	\$226.00	T	Threaded outlet (2", 3" or 4")	\$ 40.00	\$ 40.00
-34	Closure plug (C1440 Series)	\$187.00	\$187.00	X	Inside caulk outlet (2", 3" or 4")	No Add	No Add
-40	Underdeck clamp (A1-C3)	\$ 77.00	\$124.00	-Z	Extended wide elastomeric flange (20" x 20" x 1/4" dia.)	P.O.A.	P.O.A.

\*PVC/ABS Socket bodies available for 2", 3" or 4" connection sizes

## F1430C SERIES AREA DRAIN 8" SQUARE ADJUSTABLE HEAVY DUTY TRACTOR GRATE AND DEEP SUMP F1430C SERIES



PARTS			
A2 BODY	F1420-TA-(* )	A2-C3-W	HS-1

### F1430C AREA DRAIN WITH 8" x 8" SQUARE ADJUSTABLE HEAVY DUTY TRACTOR GRATE & DEEP SUMP

MODEL NUMBER	WT. Lbs	STRAINER DESCRIPTION	LIST PRICE LACQUERED CAST IRON BODY WITH:		
			DUCTILE IRON (-4)	NICKEL BRONZE (VENEER) (-1)	STAINLESS STEEL (VENEER) (-3)
F1432,3,4,-C	28.00	8" x 8" Adj. tractor grate	\$919.00	\$1401.00	\$1401.00
F1432,3,4,-C-Y	28.00	8" x 8" Non-Adj. tractor grate	\$424.00	\$ 744.00	\$ 744.00

Design and dimensions are subject to modification. Prices do not include applicable taxes. Visit [www.mifab.com](http://www.mifab.com) for the most recent product information.

MIFAB, Inc., 1321 West 119th Street, Chicago, Illinois 60643-5109, USA

Toll Free 1-800-465-2736, Fax 773-341-3049

All sales subject to MIFAB's Terms and Warranties. Please refer to inside front cover.