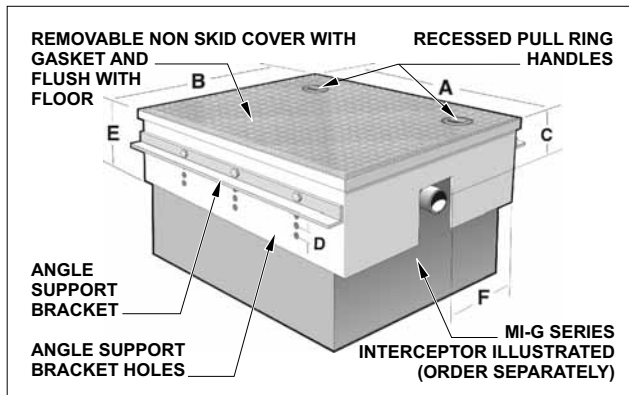


**MI-CS SERIES COVER SHROUDS for 4 to 100 US G.P.M PDI GREASE INTERCEPTORS**

**MI-CS SERIES**

The shroud provides support for the interceptor and adjustability of the inlet and outlet dimensions to match drainage piping where necessary. The shroud can be set in the slab at the time of pouring. The shroud is secured and suspended in the slab by its anchoring flanges. The interceptor is easily accessible for cleaning and inspection simply by removing the cover that sits flush with the floor.

**MI-CS FOR MI-G SERIES GREASE INTERCEPTORS**



MODEL NO.	USE WITH INTERCEPTOR	A IN	B IN	C IN	D IN	E IN	F IN
MI-CS-4	MI-G-0	21.75	16.25	5	1.00	11.75	4.25
MI-CS-7	MI-G-1	22.75	18.75	6	1.00	11.75	5.50
MI-CS-10	MI-G-2	26.25	20.75	6	1.00	11.75	6.25
MI-CS-15	MI-G-3	28.75	20.75	6	1.00	11.75	6.25
MI-CS-20	MI-G-4	28.75	20.75	6	1.25	14.75	6.25
MI-CS-25	MI-G-5	32.75	23.75	6	1.25	14.75	7.00
MI-CS-35	MI-G-6	36.25	28.75	8	1.25	14.75	8.75
MI-CS-50	MI-G-7	36.25	28.75	8	1.25	14.75	8.75
MI-CS-75*	XL-MI-G-0	47	33	8	1.25	14.75	9.50
MI-CS-100*	XL-MI-G-1	60	42	8	1.25	14.75	9.50

NOTE: \*75 & 100 GPM require 2 lids.

MODEL NO.	LIST PRICE	SHIPPING WEIGHT LBS.	TILE RECESS "TL" (Add)	ANCHOR FLANGE "FL" (Add)	FLANGE & MEMBRANE CLAMP "FLM" (Add)	HEAVY DUTY REINFORCED LID "HD" (10,000 Lbs LIVE LOAD) (Add)
MI-CS-4	\$3,069.00	90	\$2,109.00	\$ 634.00	\$ 843.00	\$2,635.00
MI-CS-7	\$3,517.00	105	\$2,109.00	\$ 634.00	\$ 843.00	\$3,619.00
MI-CS-10	\$3,665.00	120	\$2,720.00	\$ 759.00	\$ 918.00	\$3,816.00
MI-CS-15	\$3,923.00	130	\$3,301.00	\$ 759.00	\$ 918.00	\$4,217.00
MI-CS-20	\$4,175.00	140	\$3,693.00	\$ 822.00	\$ 918.00	\$4,418.00
MI-CS-25	\$4,283.00	165	\$4,226.00	\$ 856.00	\$1,023.00	\$4,664.00
MI-CS-35	\$4,263.00	200	\$5,239.00	\$ 896.00	\$1,054.00	\$6,418.00
MI-CS-50	\$4,724.00	200	\$7,282.00	\$ 916.00	\$1,213.00	\$7,041.00
MI-CS-75*	\$5,477.00	265	\$7,590.00	\$1,065.00	\$1,945.00	\$7,302.00
MI-CS-100*	\$6,319.00	375	\$8,014.00	\$1,191.00	\$2,176.00	\$7,454.00

NOTE: \*75 & 100 GPM requires 2 lids. NOTE: Suffix -AL, aluminum lid - P.O.A

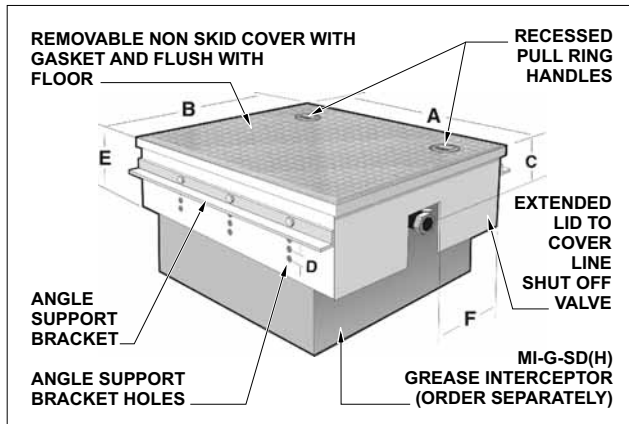
MI-CS Series supplied with one interior & one exterior angle support bracket per side. Interior angle bracket to support interceptor (purchased separately), exterior angle bracket to form anchor flange.

NOTE: The "C" dimension is with the support brackets in the top set of holes. Increase this dimension by "D" for each set of holes the support brackets are moved down, to a maximum of five sets.

INTERCEPTORS

**MI-CSD SERIES FOR MI-G-SD(H) SERIES DRAW-OFF GREASE INTERCEPTORS**

**MI-CSD SERIES**



MODEL NO.	USE WITH INTERCEPTOR	A IN	B IN	C IN	D IN	E IN	F IN
MI-CSD-7	MI-G-SD(H)-1	32.75	18.75	6	1.00	11.75	5.50
MI-CSD-10	MI-G-SD(H)-2	36.25	20.75	6	1.00	11.75	6.25
MI-CSD-15	MI-G-SD(H)-3	38.75	20.75	6	1.00	11.75	6.25
MI-CSD-20	MI-G-SD(H)-4	38.75	20.75	6	1.25	14.75	6.25
MI-CSD-25	MI-G-SD(H)-5	42.75	23.75	6	1.25	14.75	7.00
MI-CSD-35	MI-G-SD(H)-6	46.25	28.75	8	1.25	14.75	8.75
MI-CSD-50	MI-G-SD(H)-7	46.25	28.75	8	1.25	14.75	8.75
MI-CSD-75*	MI-G-SD(H)-8	57.00	33	8	1.25	14.75	9.50

NOTE: \*75 & 100 GPM requires 2 lids.

MODEL NO.	LIST PRICE	SHIPPING WEIGHT LBS.	TILE RECESS "TL" (Add)	ANCHOR FLANGE "FL" (Add)	FLANGE & MEMBRANE CLAMP "FLM" (Add)	HEAVY DUTY REINFORCED LID "HD" (10,000 Lbs LIVE LOAD) (Add)
MI-CSD-7	\$3,182.00	130	\$2,320.00	\$ 739.00	\$ 950.00	\$3,615.00
MI-CSD-10	\$3,694.00	150	\$2,952.00	\$ 844.00	\$1,004.00	\$3,816.00
MI-CSD-15	\$3,985.00	150	\$3,584.00	\$ 844.00	\$1,004.00	\$4,217.00
MI-CSD-20	\$4,171.00	170	\$4,006.00	\$ 950.00	\$1,004.00	\$4,418.00
MI-CSD-25	\$4,247.00	200	\$4,851.00	\$1,004.00	\$1,160.00	\$4,664.00
MI-CSD-35	\$4,540.00	235	\$5,694.00	\$1,004.00	\$1,266.00	\$6,418.00
MI-CSD-50	\$4,581.00	235	\$7,801.00	\$ 1,004.00	\$1,475.00	\$7,041.00
MI-CSD-75*	\$5,569.00	405	\$8,223.00	\$1,266.00	\$2,320.00	\$7,302.00

NOTE: \*75 GPM requires 2 lids. NOTE: Suffix -AL, aluminum lid - P.O.A

MI-CS Series supplied with one interior & one exterior angle support bracket per side. Interior angle bracket to support Interceptor (purchased separately), exterior angle bracket to form anchor flange.

NOTE: The "C" dimension is with the support brackets in the top set of holes. Increase this dimension by "D" for each set of holes the support brackets are moved down, to a maximum of five sets.

Design and dimensions are subject to modification. Prices do not include applicable taxes. Visit [www.mifab.com](http://www.mifab.com) for the most recent product information.

MIFAB, Inc., 1321 West 119th Street, Chicago, Illinois 60643-5109, USA

Toll Free 1-800-465-2736, Fax 773-341-3049

All sales subject to MIFAB's Terms and Warranties. Please refer to inside front cover.