

Satellite / CATV Drop Installation Materials

900MHz MATV Splitters • 1GHz 130dB One-Side Splitters • Online Attenuator Pads • Sky Spectra™ Analyzers



Splitters
B3-B8



1GHz Directional Couplers
B9



Inline Attenuator Pads
B10



Inline DC Passing Attenuators
B10



Voltage Blocking Coupler
B10



Coaxial Surge Protector
B10



Satellite Finder Meters
B12



SkyTracker™ Signal Meters
B13



SkyTracker™ Satellite Meters
B14



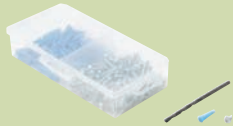
Sky Tracker™ Satellite Finder
B14



F Ground Blocks
B15



Premium F Ground Blocks
B15



Anchor Kit
B19



Hex Head Mounting Screws
B19



Mounting Anchors
B19



DSS Quick Pipe Adapter
B20



F-F Flat Through Cable
B20



Satellite Dish Level
B20



Metal Cable Clamps
B22



Feed-Through Bushings
B23



Cable Strain-Relief Boots
B23



Weather Boots
B23



Box Service Enclosure
B23



Self-Locking Cable Ties
B24



Tool Bags and Pouches
B26



TV-Telephony Wall Plates
B27



Mid-Size TV-Telephony Wall Plates
B28



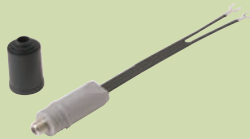
Decorator-Style Wall Plates
B28



Economy Decorator Wall Plates
B28



HDMI Wall Plates
B28



Matching Transformers
B30

Satellite / CATV Drop Installation Materials

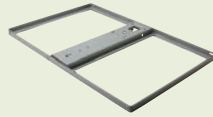
Ground Straps • Split-Bolt Ground Connectors • Mounting Anchors • Electrical Tape • Satellite Multiswitches



TV-Satellite Mini-Diplexer
B11



Satellite Antenna Tripod
B11



Non-Penetrating Roof Mount
B11



Satellite Dish Mounts
B11



Clamp-On Satellite Dish Mounts
B12



Dual Satellite Signal Level Meter
B12



Ground Straps
B16



Ground Rod
B16



Silicone Compound
B16



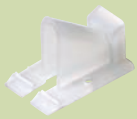
Grounding Hardware
B17



Split-Bolt Ground Connectors
B17



Galvanized Poleline Hardware
B18



Cable Siding Clips
B21



Coaxial Cable Clips
B21



Flat Cable Clip
B21



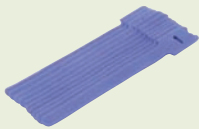
Ground Wire Clip
B21



Grip-Clip™ Mounting Clips
B22



Nylon Cable Clamps
B22



Hook-and-Loop Wire Ties
B24



PVC Electrical Tape
B24



Vinyl Electrical Tape
B24



Self-Sealing Tape
B24



Fish Tape
B25



Cable Caddy
B25



Audio-Video RF Modulator
B29



Audio-Video Selectors
B29



Coaxial Switches
B30

B

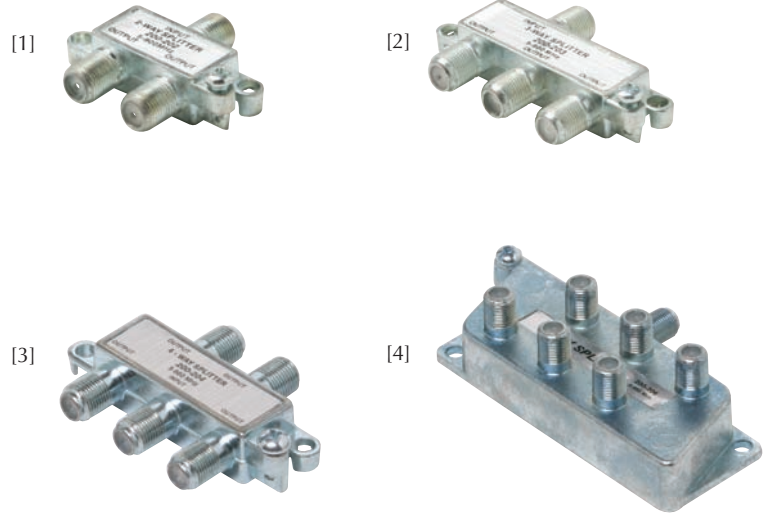
QUICK - FIND
Guide to Product

Satellite / CATV Drop Installation Materials

900MHz MATV Splitters

5-900MHz 75Ω MATV Low-Cost F Splitters
 Suitable for Consumer MATV Applications
 Epoxy-Sealed Back-Cover
 Mounting Tabs with Screws – Cast-In Ground Block

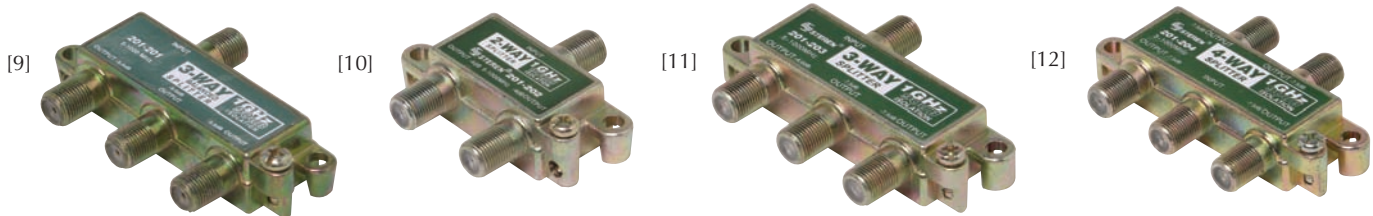
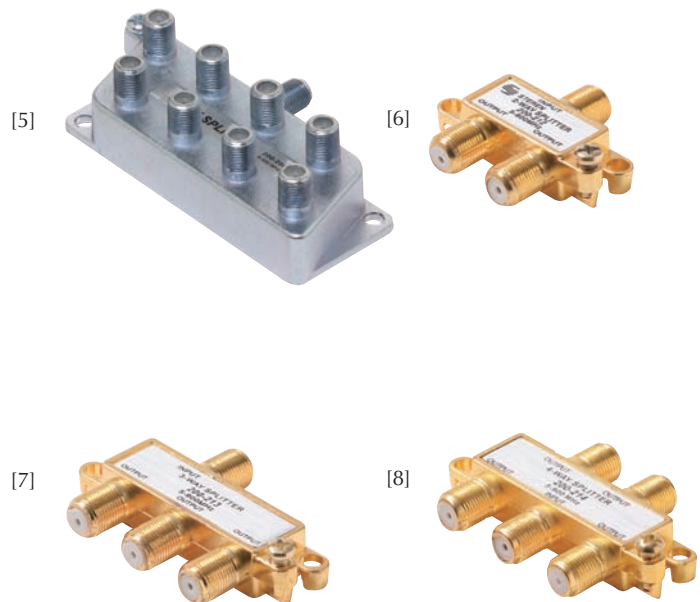
- [1] **200-202** 2-Way 900MHz F Mini-Splitter
- [2] **200-203** 3-Way 900MHz F Mini-Splitter
- [3] **200-204** 4-Way 900MHz F Mini-Splitter
- [4] **200-206** 6-Way 900MHz F-Splitter
- [5] **200-208** 8-Way 900MHz F-Splitter
- [6] **200-212** 2-Way 900MHz F Mini-Splitter – Gold
- [7] **200-213** 3-Way 900MHz F Mini-Splitter – Gold
- [8] **200-214** 4-Way 900MHz F Mini-Splitter – Gold
- 200-222** 2-Way 900MHz F-Splitter
- 200-223** 3-Way 900MHz F-Splitter
- 200-224** 4-Way 900MHz F-Splitter



1GHz 90dB F-Splitters

5-1000MHz 75Ω High-Isolation F-Splitters
 90dB min RFI Shielding – Epoxy-Sealed Back-Cover
 High-Performance Printed-Board Circuitry
 3/8" Precision Machined F-Connector Threads
 Mounting Tabs with Screws – Cast-In Ground Block
 1" centered F-ports accommodate security tools

- [9] **201-201** 3-Way Balanced 1GHz 90dB F-Splitter
 Insertion Loss 7dB max.
 Port-Port Isolation 20dB min.
 Input Return Loss 18dB min.
- [10] **201-202** 2-Way 1GHz 90dB F-Splitter
 Insertion Loss 4.3dB max.
 Port-Port Isolation 20dB min.
 Input Return Loss 15dB min.
- [11] **201-203** 3-Way 1GHz 90dB F-Splitter
 Insertion Loss 4.2/8.2dB max.
 Port-Port Isolation 20dB min.
 Input Return Loss 15dB min.
- [12] **201-204** 4-Way 1GHz 90dB F-Splitter
 Insertion Loss 8.2dB max.
 Port-Port Isolation 20dB min.
 Input Return Loss 15dB min.



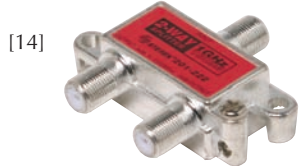
Satellite / CATV Drop Installation Materials

1GHz 130dB F-Splitters

5-1000MHz 75Ω Highest Isolation F-Splitters
 Soldered-Back Cover 130dB min. RFI Shielding
 High-Performance Printed-Board Circuitry
 3/8" Precision Machined F-Connector Threads
 Mounting Tabs with Screws – Cast-In Ground Block
 1" centered F-ports accommodate security tools



[13]



[14]



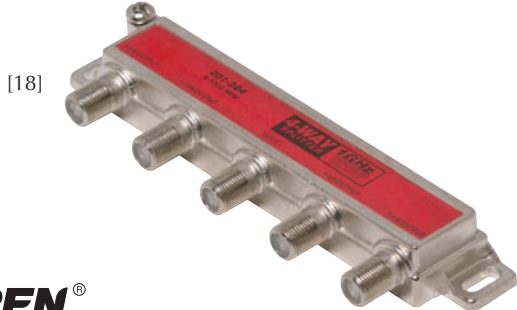
[15]



[16]



[17]



[18]

- [13] **201-221** 3-Way Balanced 1GHz 130dB F-Splitter
 Insertion Loss 7dB max.
 Port-Port Isolation 20dB min.
 Input Return Loss 18dB min.
- [14] **201-222** 2-Way 1GHz 130dB F-Splitter
 Insertion Loss 4.3dB max.
 Port-Port Isolation 20dB min.
 Input Return Loss 19dB min.
- [13] **201-223** 3-Way 1GHz 130dB F-Splitter
 Insertion Loss 4.2/8.2dB max.
 Port-Port Isolation 20dB min.
 Input Return Loss 19dB min.
- [15] **201-224** 4-Way 1GHz 130dB F-Splitter
 Insertion Loss 8.2dB max.
 Port-Port Isolation 20dB min.
 Input Return Loss 16dB min.

1GHz 130dB One-Side Splitters

5-1000MHz 75Ω Highest Isolation F-Splitters
 Horizontal One-Sided Input and Output Ports
 One-sided port design allows close mounting in
 lock-boxes for easy access of cable connections
 Soldered-Back Cover 130dB min. EMI-RFI Shielding
 High-Performance Printed-Board Circuitry
 Mounting Tabs with Screws – Cast-In Ground Block
 Anti-Corrosion Nickel-Plated Zinc-Alloy Cast Housing
 3/8" Precision Machined F-Port Threads
 1" centered F-ports accommodate security tools

- [16] **201-281** 3-Way Balanced 1GHz 130dB F-Splitter
 Insertion Loss 7.2dB max.
 Port-Port Isolation 20dB min.
 Input Return Loss 15dB min.
- [17] **201-282** 2-Way 1GHz 130dB F-Splitter
 Insertion Loss 4.2dB max.
 Port-Port Isolation 25dB min.
 Input Return Loss 20dB min.
- [16] **201-283** 3-Way 1GHz 130dB F-Splitter
 Insertion Loss 4.2/8.2dB max.
 Port-Port Isolation 20dB min.
 Input Return Loss 18dB min.
- [18] **201-284** 4-Way 1GHz 130dB F-Splitter
 Insertion Loss 8.2dB max.
 Port-Port Isolation 20dB min.
 Input Return Loss 15dB min.

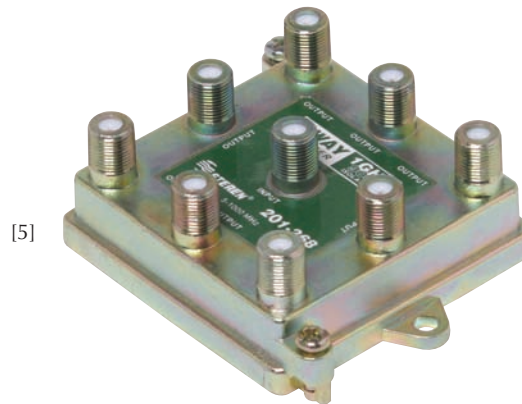
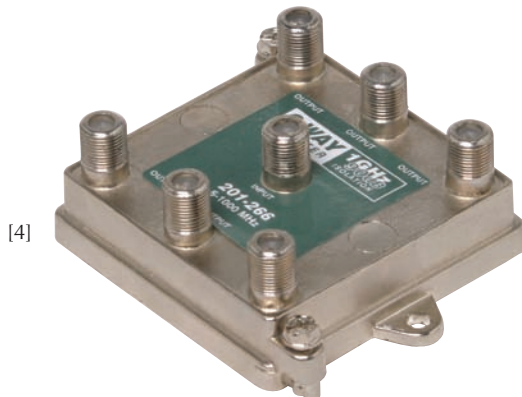
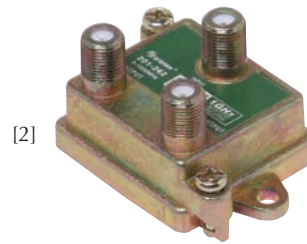


Satellite / CATV Drop Installation Materials

1GHz 90dB Vertical F-Splitters

5-1000MHz 75Ω High Isolation F-Splitters
 Vertical port design allows close mounting in
 lock boxes for easy access of cable connections
 90dB min RFI Shielding – Epoxy-Sealed Back-Cover
 High-Performance Printed-Board Circuitry
 $\frac{3}{8}$ " Precision Machined F-Connector Threads
 Mounting Tabs with Screws – Cast-In Ground Block
 1" centered F-ports accommodate security tools

- [1] **201-261** 3-Way Balanced 1GHz 90dB F-Splitter
 Insertion Loss 7dB max.
 Port-Port Isolation 20dB min.
 Input Return Loss 18dB min.
- [2] **201-262** 2-Way 1GHz 90dB F-Splitter
 Insertion Loss 4.2dB max.
 Port-Port Isolation 25dB min.
 Input Return Loss 18dB min.
- [3] **201-264** 4-Way 1GHz 90dB F-Splitter
 Insertion Loss 8.1dB max.
 Port-Port Isolation 24dB min.
 Input Return Loss 18dB min.
- [4] **201-266** 6-Way 1GHz 90dB F-Splitter
 Insertion Loss 11.5dB max.
 Port-Port Isolation 22dB min.
 Input Return Loss 20dB min.
- [5] **201-268** 8-Way 1GHz 90dB F-Splitter
 Insertion Loss 12.5dB max.
 Port-Port Isolation 21dB min.
 Input Return Loss 20dB min.



Satellite / CATV Drop Installation Materials

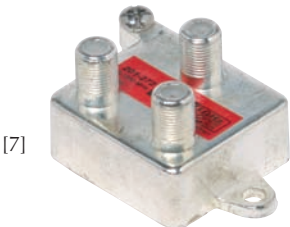
1GHz 130dB Vertical Splitters

5-1000MHz 75Ω Highest Isolation F-Splitters
 Vertical port design allows close mounting in lock boxes for easy access of cable connections
 Soldered-Back Cover 130dB min. RFI Shielding
 High-Performance Printed-Board Circuitry
 3/8" Precision Machined F-Connector Threads
 Mounting Tabs with Screws – Cast-In Ground Block
 1" centered F-ports accommodate security tools



[6]

[6] **201-271** 3-Way Balanced 1GHz 130dB F-Splitter
 Insertion Loss 7dB max.
 Port-Port Isolation 20dB min.
 Input Return Loss 18dB min.



[7]

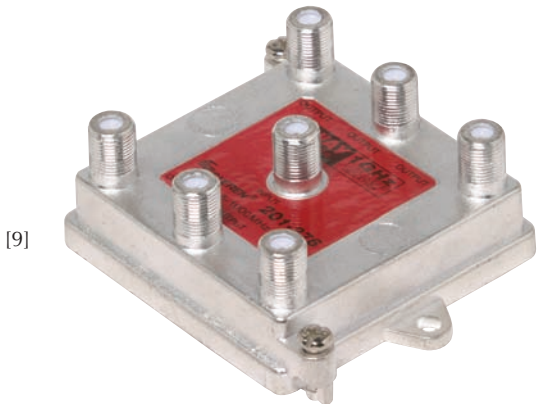
[7] **201-272** 2-Way 1GHz 130dB F-Splitter
 Insertion Loss 4.2dB max.
 Port-Port Isolation 25dB min.
 Input Return Loss 18dB min.



[8]

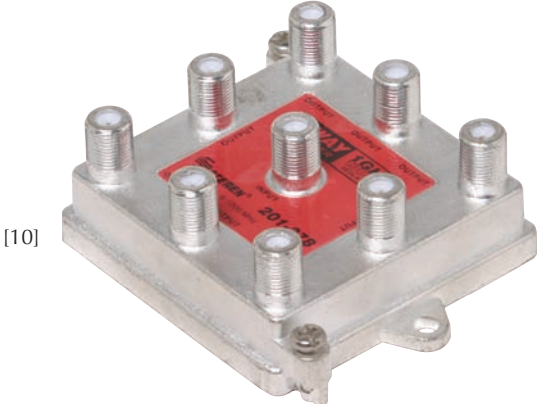
[6] **201-273** 3-Way 1GHz 130dB F-Splitter
 Insertion Loss 4.2/8dB max.
 Port-Port Isolation 23dB min.
 Input Return Loss 20dB min.

[8] **201-274** 4-Way 1GHz 130dB F-Splitter
 Insertion Loss 8.2dB max.
 Port-Port Isolation 24dB min.
 Input Return Loss 18dB min.



[9]

[9] **201-276** 6-Way 1GHz 130dB F-Splitter
 Insertion Loss 11.5dB max.
 Port-Port Isolation 22dB min.
 Input Return Loss 20dB min.



[10]

[10] **201-278** 8-Way 1GHz 130dB F-Splitter
 Insertion Loss 12.5dB max.
 Port-Port Isolation 21dB min.
 Input Return Loss 20dB min.

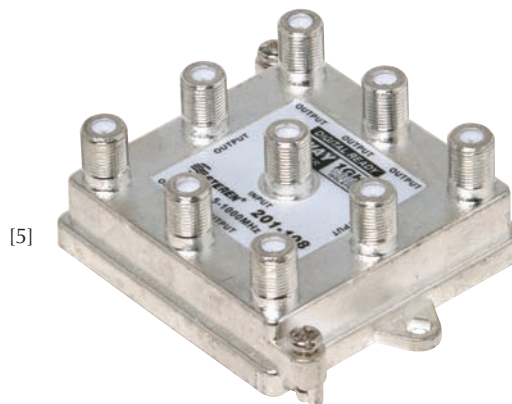
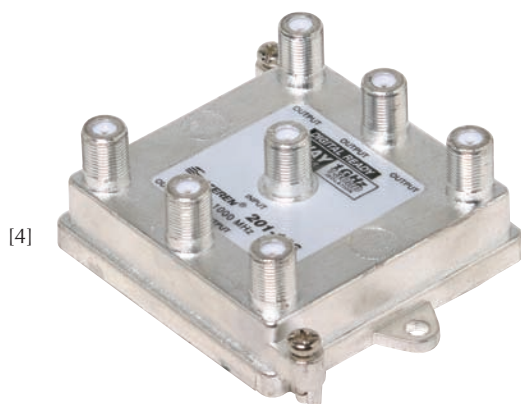
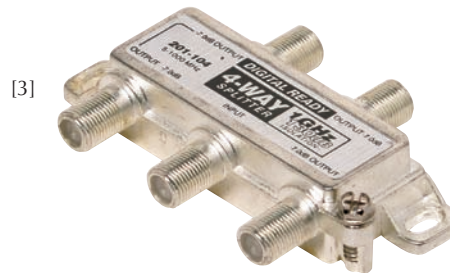
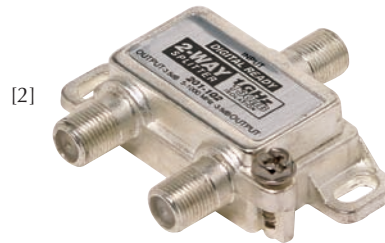


Satellite / CATV Drop Installation Materials

1GHz 130dB Digital Splitters

Premium 1GHz 130dB Digital Ready Splitters
 Broadband and CATV 5-1000MHz 75Ω Splitters
 Suitable for Hybrid Distribution Networks, HDTV,
 Voice, Data, Modem and Digital Converter Applications
 High-Performance Printed Board Circuitry
 Soldered-Back Cover 130dB min. EMI-RFI Shielding
 3/8" Precision Machined F-Port Threads
 1" centered F-ports accommodate security tools

- [1] **201-101** 3-Way Balanced 1GHz 130dB F-Splitter
 Insertion Loss 7dB max.
 Port-Port Isolation 25dB min.
 Input Return Loss 20dB min.
- [2] **201-102** 2-Way Balanced 1GHz 130dB F-Splitter
 Insertion Loss 4.2dB max.
 Port-Port Isolation 25dB min.
 Input Return Loss 20dB min.
- [1] **201-103** 3-Way Unbalanced 1GHz 130dB F-Splitter
 Insertion Loss 4.2/8.2dB max.
 Port-Port Isolation 25dB min.
 Input Return Loss 20dB min.
- [3] **201-104** 4-Way Balanced 1GHz 130dB F-Splitter
 Insertion Loss 8.2dB max.
 Port-Port Isolation 25dB min.
 Input Return Loss 20dB min.
- [4] **201-106** 6-Way Balanced 1GHz 130dB F-Splitter
 Vertical Port Configuration
 Insertion Loss 11.5dB max.
 Port-Port Isolation 25dB min.
 Input Return Loss 20dB min.
- [5] **201-108** 8-Way Balanced 1GHz 130dB F-Splitter
 Vertical Port Configuration
 Insertion Loss 12.5dB max.
 Port-Port Isolation 20dB min.
 Input Return Loss 18dB min.



Satellite / CATV Drop Installation Materials

2.4GHz Satellite Splitters

40-2400MHz 75Ω High-Frequency F-Splitters
 Suitable for Analog and Digital Satellite Applications
 90dB min RFI Shielding – Epoxy-Sealed Back-Cover
 High-Performance Printed-Board Circuitry
 3/8" Precision Machined F-Connector Threads
 Mounting Tabs with Screws – Cast-In Ground Block
 DC Power Passing to One or All Ports for
 Remote LNB-Powering Applications and
 Powering Antenna Pre-Amplifier from Headend
 F-ports accommodate security tools



[6]

[6] **201-232** 2-Way 2.4GHz 90dB Satellite-Splitter
 DC Power Passing to One Port
 Insertion Loss 2.5dB @ 900-1750MHz,
 6dB @ 1750-2400MHz
 Input Return Loss 8dB @ 900-1750MHz,
 5dB @ 1750-2400MHz
 Output Return Loss 8dB @ 900-1750MHz,
 5dB @ 1750-2400MHz



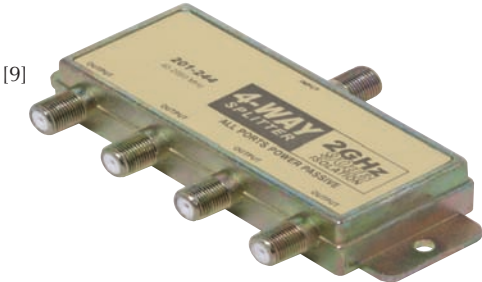
[7]

[7] **201-234** 4-Way 2.4GHz 90dB Satellite-Splitter
 DC Power Passing to One Port
 Insertion Loss 11.5dB @ 900-1750MHz,
 13dB @ 1750-2400MHz
 Input Return Loss 5dB @ 900-2400MHz
 Output Return Loss 8dB @ 900-1750MHz,
 4dB @ 1750-2400MHz



[8]

[8] **201-242** 2-Way 2.4GHz 90dB Satellite-Splitter
 DC Power Passing to All Ports
 Insertion Loss 5.2dB @ 900-1750MHz,
 8dB @ 1750-2400MHz
 Input Return Loss 8dB @ 900-1750MHz,
 5dB @ 1750-2400MHz
 Output Return Loss 8dB @ 900-1750MHz,
 5dB @ 1750-2400MHz



[9]

[9] **201-244** 4-Way 2.4GHz 90dB Satellite-Splitter
 DC Power Passing to All Ports
 Insertion Loss 11.5dB @ 900-1750MHz,
 15dB @ 1750-2400MHz
 Input Return Loss 5dB @ 900-2400MHz
 Output Return Loss 8dB @ 900-1750MHz,
 4dB @ 1750-2400MHz

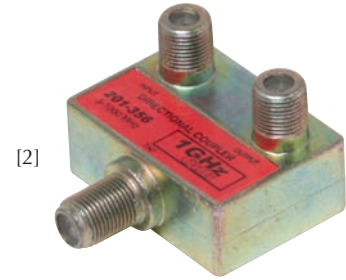


Satellite / CATV Drop Installation Materials

1GHz Directional Couplers

5-1000MHz 75Ω Directional Couplers
 90dB min RFI Shielding – Epoxy-Sealed Back-Cover
 Printed-Board Circuitry – 2-Way System Compatible
 3/8" Precision Machined F-Connector Threads
 T-Type or Wall-Plate Mount Configurations

- [1] **201-306** 6dB T-Type Directional Coupler
- [1] **201-309** 9dB T-Type Directional Coupler
- [1] **201-312** 12dB T-Type Directional Coupler
- [1] **201-316** 16dB T-Type Directional Coupler
- [1] **201-320** 20dB T-Type Directional Coupler
- [1] **201-324** 24dB T-Type Directional Coupler
- [1] **201-327** 27dB T-Type Directional Coupler
- [1] **201-330** 30dB T-Type Directional Coupler
- [2] **201-356** 6dB Plate-Mount Directional Coupler
- [2] **201-359** 9dB Plate-Mount Directional Coupler
- [2] **201-362** 12dB Plate-Mount Directional Coupler
- [2] **201-366** 16dB Plate-Mount Directional Coupler
- [2] **201-370** 20dB Plate-Mount Directional Coupler
- [2] **201-374** 24dB Plate-Mount Directional Coupler
- [2] **201-377** 27dB Plate-Mount Directional Coupler
- [2] **201-380** 30dB Plate-Mount Directional Coupler



Specifications

Tap Value (dB)	Tap Value Tolerance (dB)	Insertion Loss (max./dB)	Isolation Output-Tap (min./dB)	Return Loss (min./dB)
6	1.5	3.5	22	15
9	1.5	3.5	25	15
12	1.5	1.5	25	15
16	1.5	1.5	25	15
20	1.5	1.5	25	15
24	1.5	1.5	25	15
27	1.5	1.5	25	15
30	1.5	1.5	32	15



Satellite / CATV Drop Installation Materials



[3]

Specifications			
Insertion Loss (dB)	Insertion Loss Tolerance (dB)	M-Port Return Loss (min./dB)	F-Port Return Loss (min./dB)
3	1.5	12	12
6	1.5	15	15
8	1.5	15	15
10	1.5	12	12
12	1.5	12	12
16	1.5	15	15
20	1.5	15	15

Inline Attenuator Pads

0-2000MHz Female-to-Male Inline Attenuators
 Monolithic Ceramic Printed-Board Circuitry
 22-Gauge Spring-Steel Center – Tolerance 5%
 Return Loss 20dB typical

- [3] **201-403** 3dB Inline Attenuator Pad
- [3] **201-406** 6dB Inline Attenuator Pad
- [3] **201-408** 8dB Inline Attenuator Pad
- [3] **201-410** 10dB Inline Attenuator Pad
- [3] **201-412** 12dB Inline Attenuator Pad
- [3] **201-416** 16dB Inline Attenuator Pad
- [3] **201-420** 20dB Inline Attenuator Pad



[4]

Specifications			
Insertion Loss (dB)	Insertion Loss Tolerance (dB)	M-Port Return Loss (min./dB@MHz)	F-Port Return Loss (min./dB@MHz)
3	1.5	13@5-950,10@950-2000	10
6	1.5	13@5-950,10@950-2000	10
8	1.5	13	13@5-950,10@950-2000
10	1.5	13	13@5-950,10@950-2000
12	1.5	12	10@5-950,8@950-2000
16	1.5	13@5-950, 10@950-2000	10@5-950, 6@950-2000
20	1.5	12	11@5-950, 8@950-2000

Inline DC Passing Attenuators

0-2000MHz Female-to-Male Inline Attenuators
 DC Power Passing
 Monolithic Ceramic Printed-Board Circuitry
 22-Gauge Spring-Steel Center – Tolerance 5%
 Return Loss 20dB typical

- [4] **201-503** 3dB Inline DC-Passing Attenuator
- [4] **201-506** 6dB Inline DC-Passing Attenuator
- [4] **201-508** 8dB Inline DC-Passing Attenuator
- [4] **201-510** 10dB Inline DC-Passing Attenuator
- [4] **201-512** 12dB Inline DC-Passing Attenuator
- [4] **201-516** 16dB Inline DC-Passing Attenuator
- [4] **201-520** 20dB Inline DC-Passing Attenuator



[5]



[6]

Voltage Blocking Coupler

- [5] **201-500** 5-2000MHz DC Blocking Coupler
 Female-to-Male – Insertion Loss 0.3dB
 Return Loss 16dB Typical
 22-Gauge Spring-Steel Center
 Insertion Loss 0.5dB@0-1750MHz

Coaxial Surge Protector

- [6] **201-590** SurgeStop™ Coaxial Surge Protector
 Provides lightning protection for satellite receivers, CATV converters, TVs and VCRs
 10,000Ω Protection – Self-Resetting
 Response Time 100 ns
 Surge Resistance ~0Ω
 Frequency Range 5-2150MHz
 Power Passing Capability:
 10A 50VDC 36VAC RMS
 Insertion Loss: <0.2dB Video –1500MHz
 Return loss (75Ω):
 16dB (VSWR 1.38) Video – 500 MHz
 14dB (VSWR 1.50) – 500-1500 MHz



Satellite / CATV Drop Installation Materials

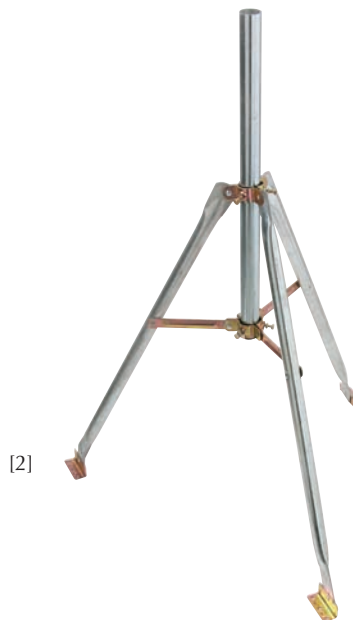
TV-Satellite Mini-Diplexer

- [1] **201-254** 5-2400MHz TV-Satellite Mini-Diplexer
 Separates or combines off-air TV-antenna and satellite signals from or onto a single feed-line
 High-Performance Printed-Board Circuitry
 90dB min. RFI Shielding
 Epoxy-Sealed Back-Cover
 $\frac{3}{8}$ " Precision Machined F-Connector Threads
 DC Power Passing to One Port 500mA max.
 ANT Insertion Loss 1.2dB @ 40-800MHz,
 2.3dB @ 800-860MHz
 SAT Insertion Loss 3.3dB @ 950-1000MHz.
 2.5dB @ 1000-2300MHz
 SAT Return Loss 12.5dB @ 40-890MHz
 Dimensions 1½"(W) x ⅝"(H) x 1"(D)



Satellite Antenna Tripod

- [2] **221-120** Satellite Antenna Tripod Tower Base
 Swing-Up Easy Installation
 Mounts DBS dish safely and securely
 Zinc-Plated 16-Gauge Tubular Steel
 Legs OD 1¼" – Mast OD 1⅝"
 31¼"(W) x 45½"(H) x 25⅝"(D)



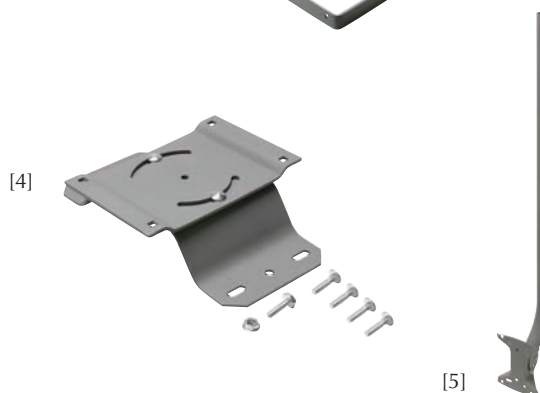
Non-Penetrating Roof Mount

- [3] **221-110** Non-Penetrating Roof Mount
 Mounts DBS satellite dish safely and securely on rooftop
 Ideal for Dish Antennas with Foot Mounts
 Ensures smooth and fast antenna mounting
 Accepts standard-size concrete building blocks as anchors
 Sturdy Steel Construction
 Includes foot-mounting bolts, nuts, washers
 37½"(L) x 24½"(D)



Satellite Dish Mounts

- [4] **221-351** Satellite Dish Eave Mount Bracket
 Used for Attaching Dish to Buildings
 Ideal for Antennas up to 24" (60cm) Wide
 Pivots in center with slots on either side allow use at any pitch or angle
- [5] **221-352** "J" Pipe Mount
 Mounting foot can be used on either end of pipe for best mounting
 Steel Construction – 36" Long
 Electro-Coated for Maximum Protection
- [6] **221-353** Wall Mount Antenna Brackets
 W-Type Wall Mount Brackets
 4" Clearance from Wall
 Attaches antenna mast to side of building
 Set of Two Brackets
 Includes mounting hardware

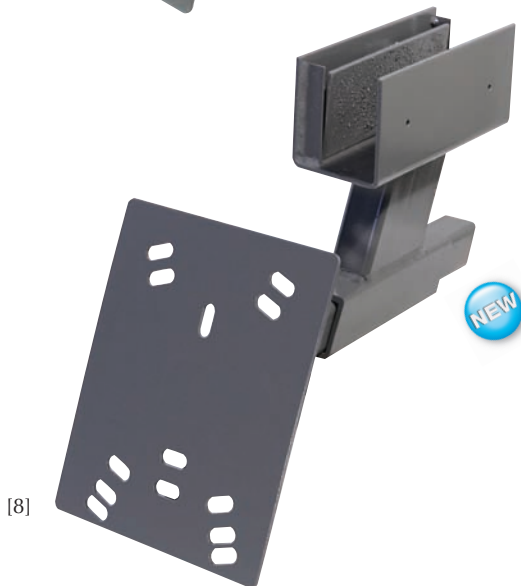


Satellite / CATV Drop Installation Materials

Clamp-On Satellite Dish Mounts

Unique design simplifies and reduces dish installation time
 Penetration-free attachment ensures no damage to structures
 Mount's shape and grey coating make mount inconspicuous
 Clamps directly to roof overhang joists or eaves, fences, or railings of patios/balconies
 Attaches to any solid wood or metal structure up to 3" wide
 Constructed of heavy gauge steel and coated for durability
 Textured inner surfaces keep mount firmly in place
 Mounting plate features multiple hole-patterns for compatibility with any type or size dish
 Includes all necessary installation hardware

- [7] **221-360** Small Clamp-On Mount (Up to 24" Dishes)
- [8] **221-365** Large Clamp-On Mount (18" to 36" Dishes)



Dual Satellite Signal Level Meter

- [9] **203-510** Dual Satellite Signal Level Meter
 Simultaneously monitors two satellite LNBS
 Provides accurate alignment of altitude, elevation and tilt-skew
 Amplified broadband detector and variable gain controls allow detection of wide range of input levels
 Audio tones enable rough signal detection
 Meter deflection for precise acquisition
 Meters can be independently switched between level, current, voltage and 22kHz tone
 Frequency Range 950-2150MHz
 Impedance 75Ω – Insertion Loss 4.5dB
 Internal Rechargeable Battery 100mA 11hrs
 Battery Life 500 Charge/Discharge Cycles
 Includes 24VDC 100mA transformer
 Includes custom carrying case
 7 1/2"(W) x 5 7/8"(H) x 5 1/4"(D)
 Weight: 3.0-lbs.



Satellite Finder Meters

Highly Sensitive Meters with Built-In Buzzer
 Built-in Buzzer with Pitched Tone for Alignment Reference
 Front Panel Sensitivity Control
 RF and DC Pass-Through – 75Ω 950-2050MHz Input
 Sensitivity 7mV@55dB – LNB Gain 3-Carrier C/N 15dB
 Input Level -25 to -75dBm – LNB Gain 52-60dB
 Power Requirements 13-18VDC
 Requires 6dB attenuator for 60-65dB LNB gain

- [10] **200-992** Analog Pocket Satellite Finder
- [11] **200-993** LED Bar-Graph Pocket Satellite Finder



Satellite / CATV Drop Installation Materials

SkyTracker™ Signal Meters

Hand-Held SkyTracker™ Signal Meters
 For Precise Satellite Position Location
 Dish Network® and DirecTV® Compatible
 Compact Design – Microprocessor Controlled
 High Sensitivity for Receiving Weak Signals
 Attenuation Adjustment for Strong Signals
 Visual/Audio Readout for Hands-Free Operation
 Built-in Beeper, Volt/mA Meter
 Impedance 75Ω – Input Frequency 950-2150MHz
 Optional Accessories Kit – CE Approved

- [1] **203-620** SkyTracker™ Plus Single-LNB Meter
 LED and Audio Indicators
 Identifies DiSEqC and 22kHz
 Powered by Receiver or DC Supply
 Meter Ranges 10-20V, 0-500mA
 Input level 20-100 dBμV
 5¾"(W) x 2¼"(H) x ¾"(D)
- [2] **203-630** SkyTracker™ Pro Dual-LNB Meter
 Measures 2 LNBs simultaneously
 LCDs and Selectable On/Off Tone
 Identifies DiSEqC, 22kHz, 13/18V, mA
 Can be set up as a two-way switch
 Runs DiSEqC 1.2/SatScan actuator
 Transmits 22 kHz, DiSEqC to LNB
 Powered by receiver or DC supply
 Meter Ranges 0-30V, 0-900mA
 Input level 20-100 dBμV
 Optional Carrying Case and Battery
 5¾"(W) x 2¼"(H) x ¾"(D)
- [3] **203-635** SkyTracker™ Accessories Kit
 Rechargeable External Battery Pack
 AC and Car Cigarette Lighter Adapter
 6' RG6 Quick Connect Patch Cable
 Leather Carrying Case and Strap
 Compartment for 203-620 or 203-630
 9½"(W) x 4⅝"(H) x 1⅞"(D)



[1]



[2]



[3]



Satellite / CATV Drop Installation Materials

SkyTracker™ Satellite Meters

Fast, Accurate Satellite Antenna Alignment
 Lightweight, Easy-to-Use Handheld Design
 Convenient Push-Button Operation
 Powered by External Battery or Satellite Receiver
 Compatible with Dish Network® and DirecTV® Systems
 Input Frequency 950-2150MHz
 Input Level 20~100dBμV
 Through Loss 3.5dB
 Input/Output Impedance 75Ω
 Charging Power Supply 14-20VDC @ 200mA
 Measures signal strength, current consumption and receiver output voltage
 Includes external 10.8V NiCd battery pack, 120VAC power adapter/charger, 12V car adapter/charger, carrying case and RG6 jumper



[4]

[4] **203-621** SkyTracker™ Plus Single LNB Digital Satellite Meter
 Graphical LED Scale or Variable Audio Tone Signal Strength Readout
 Power Consumption 10mA, with Audible Tone 25mA
 5⁷/₁₆"(W) x 2¹/₄"(H) x 1³/₁₆"(D)



[5]

[5] **203-622** SkyTracker™ Pro II Dual LNB Digital Satellite Meter
 Built-in 22kHz Tone Generator to Control Multiswitches
 Graphical LCD Bar Scale, Numerical Indicator or Variable Audio Tone Signal Strength Readout
 Power Consumption 40mA, with Audible Tone 50mA
 Overload Protection with LNBF Current Draw Limiter
 5⁵/₈"(W) x 2¹/₄"(H) x 1³/₁₆"(D)



[6]

SkyTracker Satellite Finder

[6] **203-650** SkyTracker™ Beeper Satellite Finder
 Suitable for RV with Satellite Dish
 Automatic Attenuation Adjustment
 Pitch Tone Indicator – Includes earbud

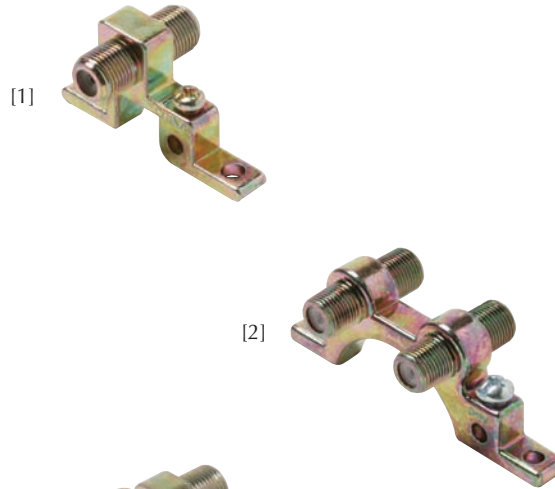


Satellite / CATV Drop Installation Materials

F Ground Blocks

Used in CATV and Satellite Subscriber Grounding Applications
 Weather-Resistant Zinc-Alloy Cast Housing
 3/16" grounding holes accept 8 AWG wire
 Includes mounting screws

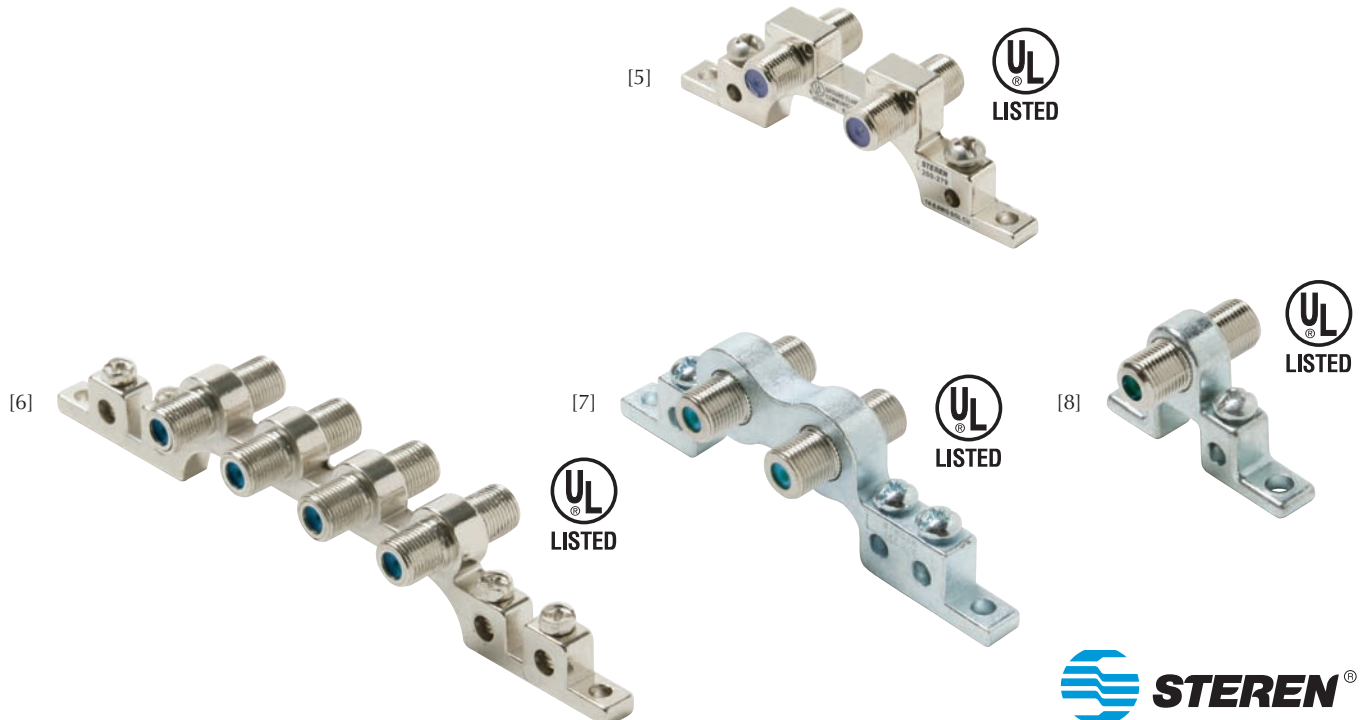
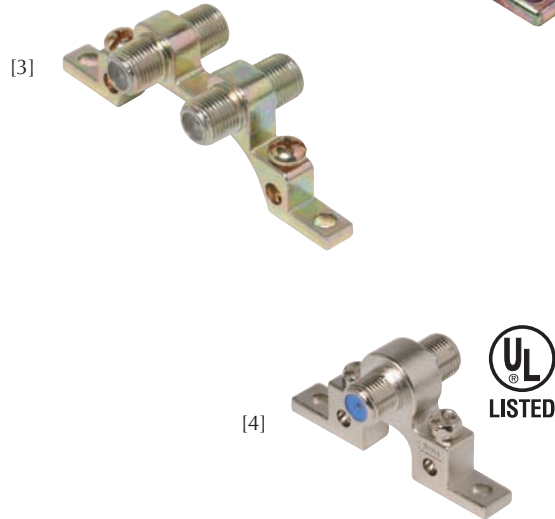
- [1] **200-271** 900MHz Single F Ground Block
1 Ground Screw – Yellow-Chromate
- [2] **200-272** 900MHz Dual F Ground Block
1 Ground Screw – Yellow-Chromate
- [3] **200-273** 900MHz Dual F Ground Block
2 Ground Screws – Yellow-Chromate
- [1] **200-274** 1GHz Single F Ground Block
1 Ground Screw – Yellow-Chromate
- [4] **200-278** 2.5GHz Single F Ground Block
2 Ground Screws – Nickel Plated
- [5] **200-279** 2.5GHz Dual F Ground Block
2 Ground Screws – Nickel Plated



Premium F Ground Blocks

High-Performance F Grounding Blocks
 Used in CATV and Satellite Subscriber Grounding Applications
 Designed for High-Frequency Broadband Network and Distribution System Applications to 3GHz
 Superb Digital-Ready Broadband Performance
 Weather-Resistant Nickel-Plated Zinc-Alloy Cast Housing
 Ground holes accept 8 AWG copper wire
 UL Listed

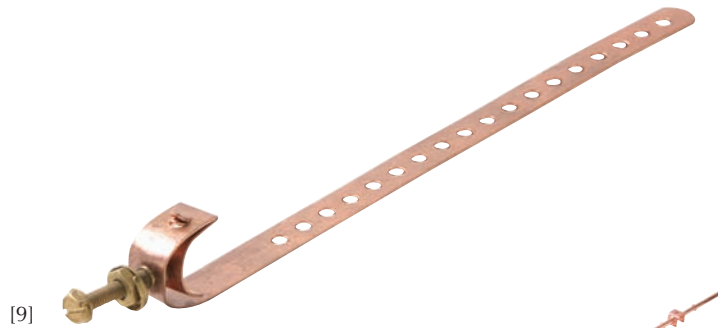
- [6] **200-269** 3GHz 4-Port F Ground Block
4 Ground Screws
- [7] **200-270** 3GHz Dual F Ground Block
3 Ground Screws
- [8] **200-276** 3GHz Single F Ground Block
1 Ground Screw
- [5] **200-277** 3GHz Dual F Ground Block
2 Ground Screws



Satellite / CATV Drop Installation Materials

Ground Straps

Provides low resistance ground connection for grounding CATV, satellite or telephone drops
Adjustable Easy-Install for Permanent Connection to Water Pipes or Service Masts to 10-14 AWG Ground Wire
Weather Resistant

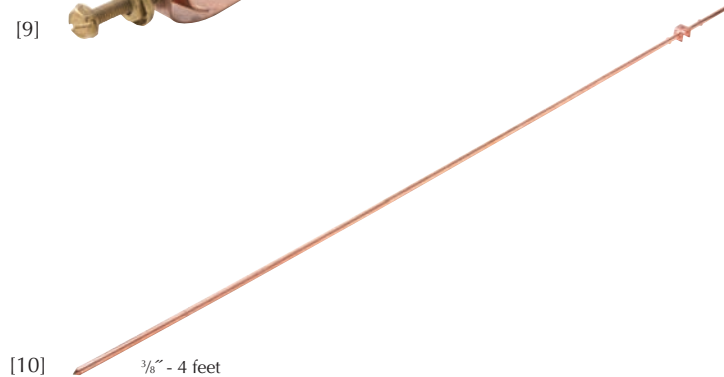


[9]

- [9] **200-280** 8" Galvanized Steel Ground Strap
Suitable for 1/2"-2" Diameter Pipe
- [9] **200-283** 10" Galvanized Steel Ground Strap
Suitable for 1/2"-2 1/2" Diameter Pipe
- [9] **200-286** 8" Copper Ground Strap
Suitable for 1/2"-2" Diameter Pipe
- [9] **200-288** 10" Copper Ground Strap
Suitable for 1/2"-2 1/2" Diameter Pipe

Grounding Rod

- [10] **200-290** 4' Universal Copper-Bonded Steel Rod
3/8" High-Strength Carbon-Steel
Cold-Drawn for Increased Strength
Conical tapered point eases soil penetration
Includes hex-bolt ground clamp



[10] 3/8" - 4 feet

Silicone Compound

Clear Silicone RTV Compound
Cures to a tough resilient rubber texture
Seals and insulates to prevent water penetration and galvanic corrosion



[11]

- [11] **200-995** 1-oz. tube
- [11] **200-996** 3-oz. tube



Satellite / CATV Drop Installation Materials

Grounding Hardware

High-Strength Bonding Ground Clamps

- [1] **200-230** 10 AWG Galvanized Steel I-Beam Clamp
Bonds copper wire to steel structure
- [2] **200-292** 3/8" Bronze Acorn-Type Ground-Rod Clamp
- [2] **200-294** 5/8" Bronze Acorn-Type Ground-Rod Clamp
- [3] **200-295** Cast-Pipe Bronze Ground-Clamp
Bonds bare copper wire to galvanized or copper water pipe
Use with 1/2"-1 3/8" diameter pipe
- [3] **200-296** Cast-Pipe Zinc Ground-Clamp
Bonds bare copper wire to galvanized or copper water pipe
Use with 1/2"-1 3/8" diameter pipe
- [4] **200-297** Ground Lug
- [5] **200-298** Meter-Pan Flat Bonding Connector
- [6] **200-299** Meter-Pan Bonding Connector
Bonds meter-pan metal frame to 10-14 AWG ground wire
Galvanized Steel Construction
Stainless Steel Green Ground Screw



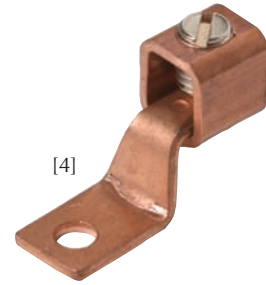
[1]



[2]



[3]



[4]

Split-Bolt Ground Connectors

High-Clamping Force Split-Bolt Connectors
Suitable for Copper or Copperweld Connections
Constructed of High-Strength Corrosion-Resistant
Copper-Bronze Alloy

- [7] **200-244** No. 4 Split-Bolt Connector
8-4 Solid Equal Main and Tap
- [7] **200-246** No. 6 Split-Bolt Connector
10-6 Solid Equal Main and Tap
- [7] **200-248** No. 8 Split-Bolt Connector
16-8 Solid Equal Main and Tap



[5]



[7]



[6]

Satellite / CATV Drop Installation Materials

Galvanized Poleline Hardware

High-Quality Drop Line Hardware
 Suitable for Telephony, CATV, Wireless Cable Applications
 High-Strength Cast Aluminum Jaw Clamps
 Corrosion-Resistant Galvanized Steel Hardware



[8]

[8] **200-232** P House Hook
 Secures CATV drop line to subscriber's house or building
 Threaded Shank Suitable for Installation in Wood or Masonry



[9]

[9] **200-234** J Drive Hook
 Supports drop-wire clamp to pole in the absence of house hooks
 Threaded Shank Suitable for Installation in Wood or Masonry



[10]

[10] **200-236** O-Span Clamp
 Provides drop-wire take-offs from strand and relieves drop-wire tension
 Used with 1/4" to 3/8" Messenger Strands



[11]

[11] **200-240** C-Span Clamp
 Provides drop-wire take-offs from strand and relieves drop-wire tension
 Holds cable away from obstacles
 Used with 1/4" to 3/8" Messenger Strands



Satellite / CATV Drop Installation Materials

Anchor Kit

- [1] **220-100** Anchor Kit with Anchors, Screws and Bit
Clear Plastic Container with Clasp Closure
Cut-Out Handle for Pegboard Hanging
100 pcs. 8-10 x 1" Mounting Anchors
100 pcs. #8 Steel Mounting Screws
1 pc. 1/4" Masonry Drill Bit
6 5/16"(W) x 3 3/8"(H) x 1 1/2"(D)



Hex Head Mounting Screws

- [2] **220-110** 1/4" x 1 1/2" Hex Head Lag Screw
- [2] **220-115** 1/4" x 2" Hex Head Lag Screw
- [2] **220-120** 1/4" x 2 1/2" Hex Head Lag Screw
- [2] **220-125** 1/4" x 3" Hex Head Lag Screw
- [3] **220-210** 5/16" x 1 1/2" Hex Head Lag Screw
- [3] **220-215** 5/16" x 2" Hex Head Lag Screw
- [3] **220-220** 5/16" x 2 1/2" Hex Head Lag Screw
- [3] **220-225** 5/16" x 3" Hex Head Lag Screw
- [4] **220-322** 5/16" x 1 1/4" Hex Head Sheet Metal Screw
- [5] **220-425** 1/4" - 20 3" Phillips Panhead Screw

[1]

[2]

[3]

[4]

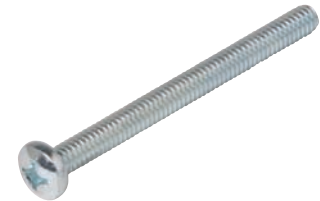
[5]

[6]

[7]

Mounting Anchors

- [6] **220-500** Lead Double Expansion Anchor 1/4"
Use 1/2" Drill Bit
- [7] **220-515** Plastic Mounting Anchor 6-8 x 1"
Use 3/16" Drill Bit



Satellite / CATV Drop Installation Materials



DSS Quick Pipe Adapter

- [8] **200-904** 1 3/8" DSS Easy-Install Pipe Adapter
8" Length Suitable for 2 7/8" to 4 1/2" ID Pipes
Adapts C-Band and PrimeStar pipes for
18" dishes
Powder-Coated Durable Finish

F-F Flat Through Cable

- [9] **205-090** 8" Flat F-F 75Ω Jumper
Cable Thickness 3/32"
Eliminates drilling through walls and
conveniently runs under or over
windows and doors
Mounting Adhesive-Taped Back

Colors Available WH



Satellite Dish Level

- [10] **200-991** 10x30mm Dual Satellite Dish Level
Used in Installation
Plastic Housing with Magnet



Satellite / CATV Drop Installation Materials

Cable Siding Clips

Available in Four Styles and Sizes for Attaching Coaxial Cable to Horizontal or Vertical Aluminum or Vinyl Siding
High-Impact Plastic in Black or Clear
UV Inhibitor™ protects from ultraviolet ray damage

- [1] **200-951** Horizontal RG59 Cable Clip
- [2] **200-952** Horizontal RG6 Vinyl-Siding
- [3] **200-953** Vertical RG59 Siding Clip
- [4] **200-954** Vertical RG6 Vinyl-Siding

Colors Available **BK** **CL**



Coaxial Cable Clips

6-7mm Coaxial Nail-In Fasteners
Attaches to wood, concrete, brick, masonry, plaster
Zinc-Plated Pre-Inserted Hardened Steel Nail
High-Impact Plastic

- [5] **200-955** RG59 Clips – 3/4" Nail – 6mm

Colors Available **BK**

- [5] **200-956** RG59 Clips – 3/4" Nail – 6mm

Colors Available **WH**

- [5] **200-960** RG6 Clips – 1" Nail – 7mm

Colors Available **BK**

- [5] **200-961** RG6 Clips – 1" Nail – 7mm

Colors Available **WH**

- [6] **200-962** RG6 Dual Clips – 1" Nail – 7mm

Colors Available **BK** **WH**



Flat-Cable Clip

- [7] **300-954** Plastic Nail-In Fastener
Suitable for 4C Flat Modular Cable
Pre-Installed 1" Carbon-Steel Nails
Suitable for Wood, Plaster, Mortar or Concrete Block

Colors Available **WH**

Ground Wire Clip

- [8] **300-955** 10-14 AWG Ground Wire Clip
Attaches to wood, concrete, brick, masonry and plaster
Zinc-Plated Pre-Inserted Hardened Steel Nail – High-Impact Plastic

Colors Available **BK** **WH**



Satellite / CATV Drop Installation Materials



Grip-Clip™ Mounting Clips

Grip-Clip™ Cable Mounting Clips
 Automatically adjusts to coaxial wire size
 Provides strain relief without pinching or damage
 Pre-loaded screws and integral automatic ratchet mechanism allow for easy, one-handed installation
 UV Inhibitor™ protects from ultraviolet ray damage

[9] **200-963** Single Coax Grip-Clip™

Colors Available **BK** **GY** **WH**



[10] **200-965** Ground Wire Grip-Clip™

Colors Available **BK** **GY** **IV** **WH**

[11] **200-964** Dual Coax Grip-Clip™

Colors Available **BK** **GY** **WH**



Nylon Cable Clamps

Clear Virgin 6/6 Nylon-UL94V2 Self-Extinguishing Clamps

[12] **400-505** 1/4" Cable Clamp – 3/8" Wide

[12] **400-510** 3/8" Cable Clamp – 1/2" Wide

[12] **400-515** 1/2" Cable Clamp – 1/2" Wide

Colors Available **CL**



Metal Cable Clamps

[13] **400-520** 10 AWG Ground Aluminum Cable-Clip

[13] **400-525** Series 6 Cable Aluminum Cable-Clip

[13] **400-530** Steel E-Drop Cable Clip



Satellite / CATV Drop Installation Materials

Feed-Through Bushings

Seals wall openings and protects cable
Impact-Resistant ABS Plastic Construction
UV Inhibitor™ protects bushing from
ultraviolet ray damage

[1] **200-982** RG59 Bushing

Colors Available **BK**

[1] **200-986** RG6 Bushing

Colors Available **BK** **CL** **IV** **WH**

[2] **200-988** RG6-Dual Bushing

Colors Available **BK** **CL** **IV**

[3] **200-984** RG6 Bushing with
Ground and Messenger Knockouts

Colors Available **BK** **CL** **IV** **WH**

[4] **200-985** RG6-Dual Bushing with
Ground and Messenger Knockouts

Colors Available **BK** **CL** **IV** **WH**

UVINHIBITOR™

[1]



UVINHIBITOR™

[2]



UVINHIBITOR™

[3]



UVINHIBITOR™

[4]



Cable Strain-Relief Boots

Slip-On Insulated Strain-Relief Covers
Protects and supports cable to prevent breakage

[5] **200-970** RG58 Cable Boot

[5] **200-972** RG59 Cable Boot

Colors Available **BK**

UVINHIBITOR™

[5]



UVINHIBITOR™

[6]



Weather Boots

Tapered Inner-Diameter Weather Boots
Suitable for Regular-Tri-Quad Shield Series 6 and
Series 59 Coaxial Cable
Flexible Rubber Construction
UV Inhibitor™ Ultraviolet-Ray Resistant

[6] **200-974** 2" Short Boot – Tapered I.D. 6½-11mm

[7] **200-975** 2½" Long Boot – Tapered I.D. 6½-11mm

[8] **200-976** 2" Ribbed Short – Tapered I.D. 7-12mm

[7] **200-977** 2½" Long Boot – Tapered I.D. 6½-11mm

Colors Available **BK**

UVINHIBITOR™

[7]



UVINHIBITOR™

[8]



Box Service Enclosure

[9] **220-710** Weather-Resistant Service Enclosure
Provides secure enclosure for
mounting splitters and terminating coax
Weatherproof HDPE Construction with
UV Inhibitor™ for Added Durability
Padlock Eyelet for Added Security
Generous ¾" x ½" Entrance Slots
Accommodates multiple cables and
allows for future expansion
Removable Cover for Easy Access
Mounts flat or on a pole using screw,
cable tie or U-bolt slots
6¼"(W) x 8¾"(H) x 2¾"(D)

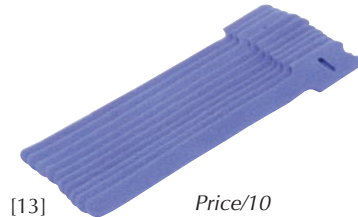
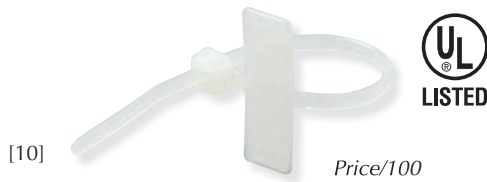
UVINHIBITOR™

[9]



STEREN®

Satellite / CATV Drop Installation Materials



Self-Locking Cable Ties

Self-Locking Tie-Wraps
Bent Finger-Grip Tip Clear Virgin Nylon 6/6
UL94V2 Self Extinguishing

- [10] **400-604** 3.9" 18-lbs Marker-Tie
- [11] **400-605** 4.3" 18-lbs Marker-Tie
- [12] **400-708** 8" 120-lbs Heavy Duty Tie
- [12] **400-712** 12" 120-lbs Heavy Duty Tie

Colors Available **CL**

- [12] **400-715** 15" 120-lbs Heavy Duty Tie
- [12] **400-804** 4" 18-lbs Cable-Tie
- [12] **400-806** 6" 18-lbs Cable-Tie
- [12] **400-808** 8" 18-lbs Cable-Tie
- [12] **400-812** 12" 40-lbs Cable-Tie
- [12] **400-815** 15" 40-lbs Cable-Tie
- [12] **400-828** 8" 50-lbs Cable-Tie
- [12] **400-832** 12" 50-lbs Cable-Tie
- [12] **400-835** 15" 50-lbs Cable-Tie
- [12] **400-841** 21" 50-lbs Cable-Tie

Colors Available **BK CL**

Hook-and-Loop Wire Tie

[13] **400-858** Hook-and-Loop Wire Tie
Nylon Strap for Tying Cable – 8" Length
Hook side instantly attaches to loop side
Easy to Reopen and Reclose

Colors Available **BK BL**

PVC Electrical Tape

Weather-Resistant PVC Electrical Tape
3/4" Wide 0.18mm Thick

- [14] **400-904** 60' Non-UL Electrical Tape

Colors Available **BK**

- [14] **400-905** 60' UL Electrical Tape

Colors Available **BK BL GR WH**

Self-Adhesive Tape

[15] **221-410** 10' Self-Adhesive Tape for
Insulating and Weatherproofing
Seals to itself permanently
3 3/4" Wide – 118 mil Thick

Colors Available **BK**

Self-Sealing Tape

[16] **400-911** Sealing Adhesive Tape
Suitable for Weatherproofing Connections
During Installation
Weather-Resistant Black PVC
Provides instant watertight seal
Protects metal from corrosion
20 mil thick – 1/2"(W) X 60"(L)

Colors Available **BK**

Satellite / CATV Drop Installation Materials

Fish Tape

- [1] **204-405** 100' Fish Tape with Dispenser
 Used in Pulling Wires and Cables Inside Walls, Between Floors and in Conduit
 Durable Steel Tape Construction
 Ergonomic Hand Grip for Effective Tape Control
 Enclosed in Sturdy ABS Plastic Dispenser
 Retracting Trigger for Fast Rewinding
 1/8"(W) x 100'(L)



[1]

Cable Caddy

- [2] **204-407** Cable Caddy
 Increases ease and efficiency of installing cables
 Holds up to 1000' cable reels
 Folds neatly for storage and transport
 Lightweight, Durable Steel Construction
 20"(W) x 12"(H) x 18 1/2"(D)
 5 Per Box
 52.91 lbs.



[2]



Satellite / CATV Drop Installation Materials

Tool Bags and Pouches

Rugged Fabric Bags, Reinforced in Critical Wear Areas
 Weather-Resistant for Indoor and Outdoor Use
 Durable stitching keeps integrity after years of use
 Strong rivets keep bags, straps from breaking
 Easy-Access Pockets for Organization and Efficiency
 Ergonomic Design for Easy Carrying to and from Worksites
 Won't damage walls, floors and countertops
 Attractive Black and Brown Color Combination
 Tools, Trays and Buckets Not Included



[3]



[4]



[5]



[6]

- [3] **204-451** 15-Pocket Tool Bag with 16" Tray Compartment
 7 Inside/8 Outside Pockets
 Extra Padded Carrying Handles for Strength and Comfort
 Comfortable, Adjustable Shoulder Strap
 Metal Tool Snap and Electrical Tape Strap
 Two Large Side Compartments with Web Loops for Large-Handle Tools
 Tools and Tray Not Included
 Dimensions: 16"(L) x 11"(W) x 10"(H)
- [4] **204-452** 35-Pocket Tool Bucket Bag
 8 Inside/27 Outside Pockets
 Fits inside standard 5-gal. bucket
 Large Interior Pockets and Room for Big Tools, Spray Cans, etc.
 Inside loop keeps hammer in place
 Outside loop can dispense tape without removing roll
 Includes shallow outside pockets for drill bits and screws
 Tools and Bucket Not Included
 Dimensions: 20"(L), fits 5-gal. bucket
- [5] **204-453** 23-Pocket Industrial Tool Bag
 17 Inside/6 Outside Pockets
 Padded Carrying Handles for Strength and Comfort
 Foam-padded sides and reinforced bottom create semi-rigid framework
 Comfortable, Adjustable Shoulder Strap
 Tools Not Included
 Dimensions: 16"(L) x 9"(W) x 9"(H)
- [6] **204-454** 28-Pocket Electrical and Maintenance Tool Pouch
 9 Inside/19 Outside Pockets
 Box-shaped design keeps pouch steady on flat surface
 Includes many pockets for tools, drill bits, electrical tape, etc.
 Tools Not Included
 Dimensions: 9"(L) x 9"(W) x 18"(H)



Satellite / CATV Drop Installation Materials

TV-Telephony Wall Plates

Modular TV and TV-Telephony Standard Wall Plates
 Gold-Plated Telephony Contacts
 High-Performance F81 Splices (200-058) Used in 2.5GHz Version Plates
 High-Impact ABS Plastic – Flush-Mount Smooth Finish
 Supplied with Matching-Color Mounting Screws
 2 3/4"(W) x 4 1/2"(H)

[1] **200-250** Satellite Ribbon Cable Plate

Colors Available **AL IV WH**

[2] **200-251** TV F-Jack Plate

[3] **200-252** TV Dual F-Jack Plate

Colors Available **AL IV LA WH**

[4] **200-254** TV 1-Hole Plate

Colors Available **AL BR IV WH**

[5] **200-256** TV 2-Hole Plate

Colors Available **BR IV WH**

[6] **200-258** Blank Cover Plate

Colors Available **AL BR IV LA WH**

[7] **200-267** TV F-Jack Plate – 2.5GHz

[8] **200-268** TV Dual F-Jack Plate – 2.5GHz

Colors Available **AL BR IV WH**

[9] **300-234** 4C Tel-TV Jack Plate

Colors Available **AL IV LA WH**

[9] **300-235** 4C Tel-TV Jack Plate – 2.5GHz

Colors Available **AL IV WH**

[10] **300-237** 4C 2xTV Phone Plate

Colors Available **IV WH**

[10] **300-238** 4C 2xTV Phone Plate – 2.5GHz

[9] **301-234** 4C Tel-TV Jack Plate UL

Colors Available **AL IV WH**



Satellite / CATV Drop Installation Materials

Mid-Size TV-Telephony Plates

Modular TV and TV-Telephony Mid-Size Wall Plates
 Gold-Plated Contacts – High-Impact ABS Plastic
 Flush-Mount Smooth Finish
 Supplied with Matching-Color Mounting Screws
 3 1/8"(W) x 4 7/8"(H)

- [11] **200-411** TV Mid-Size Plate w/Coupler
- [12] **200-418** Blank Mid-Size Cover Plate
- [13] **300-233** 4C Tel-TV Jack Mid-Size

Colors Available **AL** **IV** **LA** **WH**

Decorator-Style Wall Plates

Single Gang Decorator-Style Flush Plates
 Gold-Plated Modular Jack Contacts
 High-Impact ABS Plastic Mounting Bracket
 Supplied with Matching-Color Mounting Screws
 2 3/4"(W) x 4 1/2"(H)

- [14] **200-253** TV Decorator F-Jack – Gold

Colors Available **IV** **LA** **WH**

- [15] **200-255** TV Decorator Dual F – Gold
- [16] **200-260** 3-RCA Decorator – Gold
 Yellow-Red-White Jack Insulators

Colors Available **IV** **WH**

- [17] **300-103** 4C Tel-TV Decorator Jack
 Gold-Plated F81 Connector

Colors Available **IV** **LA** **WH**

Economy Decorator Wall Plates

Flush-Mount TV Wall Plates
 High-Impact ABS Plastic with Mounting Hardware
 2 3/4"(W) x 4 1/2"(H)

- [18] **200-261** TV 1-Hole Economy Plate

Colors Available **BR** **IV** **WH**

- [19] **200-263** TV Offset-Hole Economy Plate

Colors Available **IV** **WH**

- [20] **200-265** F81 Economy Plate
- [20] **200-266** 1GHz F81 Economy Plate

Colors Available **BR** **IV** **WH**

HDMI Wall Plates

Flush Mount Decorator-Style HDMI Wall Plates
 Feed-Through Design
 High-Impact ABS Plastic with Mounting Hardware
 2 3/4"(W) x 4 1/2"(H)

- [21] **516-101** HDMI Wall Plate
- [22] **516-102** Dual HDMI Wall Plate
- [23] **516-117** HDMI + Component Video Wall Plate

Colors Available **WH**



Satellite / CATV Drop Installation Materials

Audio-Video RF Modulator

- [1] **203-101** Audio-Video NTSC RF Modulator
 Connects RCA and S-Video inputs from
 DVD players, camcorders,
 video game system consoles or
 any A/V equipment to an F-type output
 Suitable for Older TV Sets Without RCA or
 S-Video Inputs
 RF Output Channels 3&4
 RF Output Impedance 75Ω
 Video Input Impedance $75/1k\Omega$
 Audio Input Impedance $13\pm 3k\Omega$
 TV-ANT Insertion Loss 2dB @ 806MHz
 Power Source 120VAC 60Hz 4.5W
 $5\frac{7}{8}"(W) \times 1\frac{7}{8}"(H) \times 3"(D)$

[1]

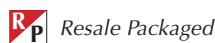


Audio-Video Selectors

Automatic and Manual Audio-Video Selectors
 Connects 4 audio-video sources to a single TV set
 Suitable for DVD Players, DVRs/PVRs, VCRs,
 Camcorders, Video Game System Consoles, etc.
 Manual or automatic controls switch between
 various sources, eliminating the need for multiple monitors

- [2] **200-470** Manual A/V Selector NTSC Modulator
 4 S-Video and Composite Video Inputs
 Integrated Ch 3/4 RF Modulator
 Converts separate audio/video signals into
 a single VHF-TV signal (Ch 3 or 4) viewable
 on most TV sets
 Includes 120VAC 4.5W transformer
 $9\frac{1}{2}"(W) \times 5\frac{1}{8}"(H) \times 1\frac{7}{8}"(D)$

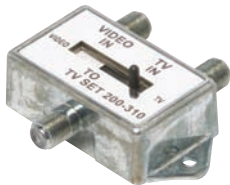
[2]



Resale Packaged



Satellite / CATV Drop Installation Materials



[3]



[4]



[5]



[6]



[7]



[8]



[9]



[10]

Coaxial Switches

Switches between 2 or 3 input sources
 Hardware and Adhesive Pad Included
 75Ω Inputs – 75Ω Output
 Bandwidth 5-900MHz UHF-VHF-FM

- [3] **200-310** 2-Way Slide Switch – Low Cost
60dB Isolation Diecast Housing
- [4] **200-315** 2-Way Push-Button Switch
90dB High Isolation
Heavy Duty Die-Cast Inner Housing
Solid Push-Button Constant-Contact
- [5] **200-320** 2-Way Slide Switch
75dB Isolation – Shielded Housing
- [6] **200-345** 3-Way Push-Button Switch
60dB Isolation – Shielded Housing

Matching Transformers

75/300Ω Impedance-Matching Baluns
 Bandwidth 5-900MHz UHF-VHF-FM

- [7] **200-490** Indoor-Outdoor 75-300Ω Balun
Sealed Molded PVC Construction
300Ω Twin-Wire Leads
Protective Weather Boot Included
- [8] **200-495** Indoor-Outdoor 75-300Ω Balun
Sealed Molded PVC Construction
16 AWG Solid Hook Terminals
Protective Weather Boot Included
- [9] **200-500** Indoor 75-300Ω Balun
- [10] **200-510** Quick-Connect 300-75Ω Balun
Insulation-Piercing Screws

