

# VISION XFV™

IN CINEMASCOPE™ WIDESCREEN FORMAT



FEATURING  
**SILVERSTAR**  
BY VUTECH

## VISION XFV™

Fixed Vertical Masking Wall Screen

Vision XFV™ is a vertically engineered dual-aspect masking system for all anamorphic lens projector systems. Vision XFV™ features a quiet motor design in a 4 3/4" custom beveled edge frame with a rich black velvet finish. Available with SilverStar™, BriteWhite™, Opaque™, PearlBrite™, GreyDove™ and SoundScreen™ surfaces.

» **CinemaScope™ Widescreen** 2.35:1 (available 2.40:1) – **HDTV** 16:9



CinemaScope™ Widescreen 2.35:1

HDTV 16:9



HDTV 16:9



CinemaScope™ Widescreen 2.35:1

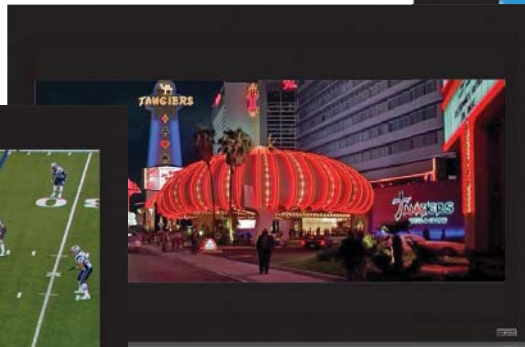
## VISION XFH™ Dual-Aspect Fixed Horizontal Masking Screen

Vision XFH™, a state-of-the-art dual-aspect masking system developed for home theaters or multi-media rooms. This versatile fixed frame masking screen includes an intelligent motor control that enables masking from HDTV format (16:9 aspect ratio) horizontally to a wide screen format (2.35:1 or 2.40:1 aspect ratio). Available with SilverStar™, BriteWhite Opaque™, PearlBrite™, GreyDove™ and SoundScreen™ surfaces.

» **HDTV 16:9 – CinemaScope™ Widescreen 2.35:1 – 2.40:1**



HDTV 16:9



CinemaScope™ Widescreen 2.35:1



Video 4:3

## VISION XFHV™ Multi-Aspect Screen with Horizontal and Vertical Masking

Vision XFHV™ is a versatile multi-aspect masking system that features both horizontal and vertical masking. This fixed frame system combines independent motorized masking capability that allows for multiple screen format viewing. Available with SilverStar™, BriteWhite Opaque™, PearlBrite™, GreyDove™ and SoundScreen™ surfaces.

» **HDTV 16:9 – CinemaScope™ Widescreen 2.35:1 (available 2.40:1) – Video 4:3**

