

Fiber Optic Products

Fiber Preparation Tools • Fiber Connector Crimp Tool • Fiber Jumper Assemblies • Fiber Pigtail Assemblies



Fiber Preparation Tools
F3



Fiber Connector Crimp Tool
F4



Fiber Jumper Assemblies
F6



Fiber Pigtail Assemblies
F7



Breakout Receiver Service
Pigtail Cable
F8



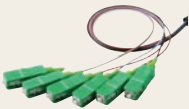
Preterminated Indoor Cable
Jumper Assemblies
F9



Splitters
F16

Fiber Optic Products

Breakout Receiver Service Pigtail Cable • Preterminated Indoor Cable Assemblies • Connectors • Terminators



Preterminated Indoor Cable
Pigtail Assemblies
F10



Connectors
F11



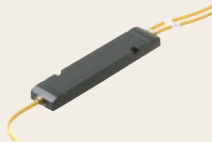
Adapters
F12



Terminators
F13



Attenuators
F14



Wavelength Division
Multiplexers
F15

F

QUICK - FIND
Guide to Product

Fiber Optic Products

Fiber Preparation Tools

- [1] **514-010** Precision Fiber Optic Cable Stripper
Suitable for 0.010" (250µm) Fiber
Adjustable for Precise Removal of
Outer Jacket and Fiber Buffer
Precision Ground Steel Blades
Easy-Grip Plastic Coated Handles
- [2] **514-013** Fiber Optic Cable Cutter
Wedge-Shaped Diamond Tip for
Precise Scribing and Snapping of Fiber
Steel Chromate Pen with Pocket Clip
3/8"(Dia.) x 5 3/16"(H)
- [3] **514-050** Fiber scissors effortlessly cuts
Aramid strength fibers and Kevlar in
fiber optic cable
Precision ground grooved cutting
edges prevent slippage
Large Ergonomic Plastic Handles
3 3/8"(W) x 5 7/8"(H) x 3/16"(D)
- [4] **514-207** Fiber Optic Stripper-Cutter
Precisely cuts and strips all
0.010" (250µm) and
0.0125" (315µm) glass fiber buffer
Easily strips 2.8mm, 5.0mm and
8.0mm outer diameter jacket
Pre-Set Opposing-Blade for
Clean Operation Without Adjustment
Non-slip ridged handle facilitates
precise operation
1 3/8"(W) x 3 3/8"(H) x 3/4"(D)



[1]



[2]



[3]



[4]

Fiber Optic Products

Fiber Connector Crimp Tool

[5]



- [5] **514-055** Fiber Optic Ratchet Crimper for Fiber Optic Connectors
Full Cycle Ratchet Mechanism
Ensures a solid repeatable crimp
Precision Machined Hex Die
0.042" (1.07mm), 0.068" (1.72mm),
0.078" (1.98mm), 0.128" (3.25mm),
0.151" (3.84mm), 0.178" (4.52mm)
Adjustable Return Spring Tension
2⁵/₈"(W) x 8¹/₂"(H) x ⁷/₈"(D)



Fiber Optic Products

Contents

Fiber Jumper Assemblies.....	F6	Connectors.....	F11
Fiber Pigtail Assemblies.....	F7	Adapters.....	F12
Breakout Receiver Service Pigtail Cable.....	F8	Terminators.....	F13
Pre-Terminated Indoor Cable Jumper Assemblies.....	F9	Attenuators.....	F14
Pre-Terminated Indoor Cable Pigtail Assemblies.....	F10	Wavelength Division Multiplexers.....	F15
		Splitters.....	F16

Quality connections are critical in the fiber optic network. Connectors, adapters, splitters and other devices are among the lowest-cost items in the network, but they play an indispensable role in maintaining optimal performance and helping carry light signals farther. Fiber optic voice, video and data networks require properly assembled and accurately tested connections.

But depending on the vendor, connectivity quality can range from exceptional to inferior...and thus affect the reliability and performance of your network. Some manufacturers comply with only the minimal standards and specifications and rely on less than strictly controlled processes in production. On the other hand, our fiber optic products reach much higher standards.

Our solutions serve broadband cable and satellite TV operators, cabling and telephony systems contractors, and many other markets. In fact, we offer one of the largest product portfolios in the electronics world. We possess a complete design, engineering, production, quality assurance and technical support organization unrivaled by any competing company.

This section of the Steren catalog is your official guide to our fiber optic products.

As demonstrated by our variety of equipment categories, we can fulfill nearly all applications and network requirements. We provide a full line of assemblies and other products suited to your needs. Inside this catalog you'll find descriptions, specifications and ordering information.

In addition to assemblies, we provide a wide variety of connectors, adapters, attenuators, terminators, wavelength division multiplexers and splitters. We also offer fiber preparation tools for a quality connection. It's a complete package for all your fiber connectivity needs.

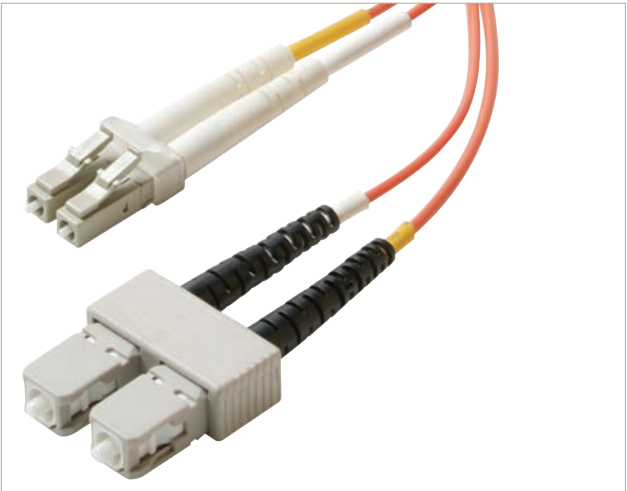


Fiber Jumper Assemblies

Ordering Instruc-

Complete the form by filling in each block with the appropriate bold letter or number that corresponds to the choice in each menu item. The product must have a combination of 15 letters/numbers.
Example: FJ5S1A1A30001MY

F		J											
<i>Fill out remaining spaces</i>													
Fiber	Type	Singlemode Multimode	Simplex Duplex	Connector 1	Polish 1	Connector 2	Polish 2	Cable Diameter	Cable Length	Meters, Feet or Inches	Jacket Color		
F Fiber	J Jumper	5 Singlemode 9/125 125µm	S Simplex	1 ST	A APC (Angle)	1 ST	A APC (Angle)	30 3.0mm	001 1	M Meters	Y Yellow		
		6 Singlemode 9/125 126µm	D Duplex	2 SC	P PC	2 SC	P PC	31 3.0 (652C)	002 2	F Feet	R Red		
		7 Multimode 50/125 127µm		3 FC	U UPC (Ultra)	3 FC	U UPC (Ultra)	20 2.0mm	003 3	I Inches	G Green		
		8 Multimode 62.5/125 127µm		4 MTRJ	M Male (MT), for MTRJ connector only	4 MTRJ	M Male (MT), for MTRJ connector only	18 1.8mm	through		B Blue		
				5 LC		5 LC		16 1.6mm	999 999		O Orange		
				6 MU		6 MU		09 0.9mm			W White		
				7 E2000		7 E2000		10 0.9mm/HT					
				8 DIN		8 DIN	F Female (MT), for MTRJ connector only						
				9 MPO		9 MPO							
				0 D4		0 D4							



Specifications

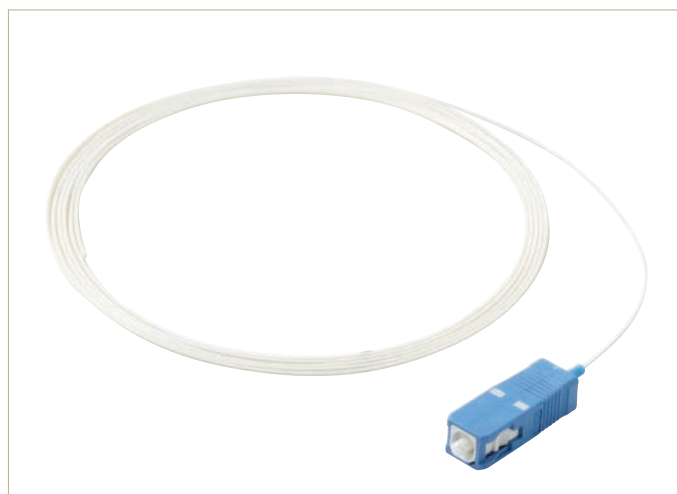
- High-Performance Fiber Cable for Use in Data Networks, Optical Patch Panels, and Digital Video and Audio Applications
- Customized by Fiber Mode, Simplex or Duplex Construction, Connector Type, Connector Polish, Cable Diameter, Cable Length and Jacket Color
- Precision Manufactured
- FDDI and OFNR Riser Rated
- Flame Retardant PVC Jacket
- 100% Factory Tested and Certified
- Excellent Insertion and Return Loss Characteristics
- Compliant with TIA/EIA-568B.3 and Telcordia Standards



Fiber Pigtail Assemblies

Ordering Instructions: Complete the form by filling in each block with the appropriate bold letter or number that corresponds to the choice in each menu item. The product must have a combination of 13 letters/numbers.
Example: FP5S1A30002MY

F		P								
Fill out remaining spaces										
Fiber	Type	Singlemode Multimode	Simplex Duplex	Connector	Polish	Cable Diameter	Cable Length	Meters, Feet or Inches	Jacket Color	
F Fiber	P Pigtail	5 Singlemode 9/125 125µm	S Simplex	1 ST	A APC (Angle)	30 3.0mm	001 1	M Meters	Y Yellow	
		6 Singlemode 9/125 126µm	D Duplex	2 SC	P PC	31 3.0 (652C)	002 2	F Feet	R Red	
		7 Multimode 50/125 127µm		3 FC	U UPC (Ultra)	20 2.0mm	003 3	I Inches	G Green	
		8 Multimode 62.5/125 127µm		4 MTRJ	M Male (MT), for MTRJ connector only	18 1.8mm	through		B Blue	
				5 LC		16 1.6mm	999 999		O Orange	
				6 MU	F Female (MT), for MTRJ connector only	09 0.9mm			W White	
				7 E2000		10 0.9mm/HT				
				8 DIN		06 0.6mm				
				9 MPO						
				0 D4						



Specifications

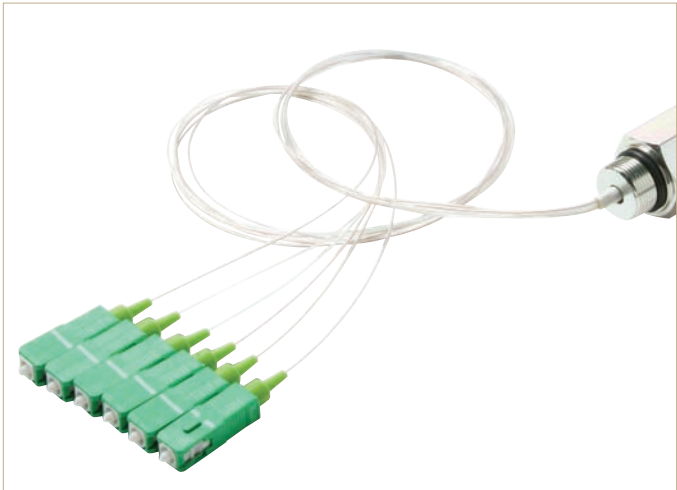
- High-Performance Fiber Cable for Use in Data Networks, Optical Patch Panels, and Digital Video and Audio Applications
- Customized by Fiber Mode, Simplex or Duplex Construction, Connector Type, Connector Polish, Cable Diameter, Cable Length and Jacket Color
- Precision Manufactured
- FDDI and OFNR Riser Rated
- Flame Retardant PVC Jacket
- 100% Factory Tested and Certified
- Excellent Insertion and Return Loss Characteristics
- Compliant with TIA/EIA-568B.3 and Telcordia Standards



Breakout Receiver Service Pigtail Cable

Ordering Instructions: Complete the form by filling in each block with the appropriate bold letter or number that corresponds to the choice in each menu item. The product must have a combination of 15 letters/numbers.
Example: FR2CA52A0040209

F	R			5					
<i>Fill out remaining spaces</i>									
Fiber	Type	Fiber Count	Cable Type	Singlemode Multimode	Connector	Polish	Cable <small>(Total Length in Feet ONLY)</small>	Cable Furcation <small>(Breakout)(Length in Inches ONLY)</small>	Furcation Diameter
F Fiber	R Breakout Receiver Service Pigtail Cable	2C 2-Ct OSP Cable	A Armored	5 Singlemode	2 SC 3 FC	A APC (Angle)	001 1 Foot	01 1 Inch	30 3.0mm
		4C 4-Ct OSP Cable	D Dielectric			P PC	002 2 Feet	02 2 Inches	20 2.0mm
		6C 6-Ct OSP Cable				U UPC (Ultra)	003 3 Feet	03 3 Inches	09 900um
		8C 8-Ct OSP Cable					through	through	
							999 999 Feet	99 99 Inches	



Specifications

- High-Performance Fiber Cable for Use in situations where pre-connectorized inside or outside plant cables are desired for installation in 5/8x24 housing ports in Fiber Optic Nodes
- Customized by Fiber Count, Cable Type, Fiber Mode, Connector Type, Connector Polish, Cable Length, and Cable Furcation Length and Diameter
- Precision Manufactured
- Flame Retardant PVC Jacket
- 100% Factory Tested and Certified
- Excellent Insertion and Return Loss Characteristics
- Compliant with TIA/EIA-568B.3 and Telcordia Standards



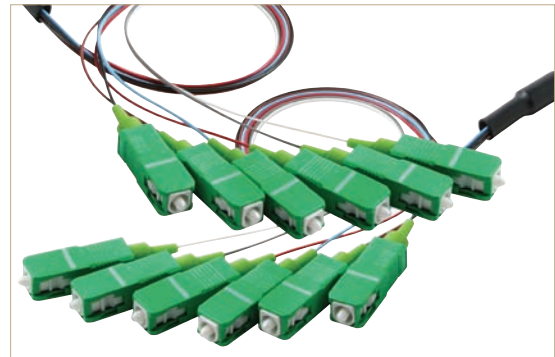
Pre-Terminated Indoor Cable Jumper Assemblies

Ordering Instructions: Complete the form by filling in each block with the appropriate bold letter or number that corresponds to the choice in each menu item. The product must have a combination of 15 letters/numbers.
Example: FBJE52A2A003F11

F		BJ											
Fill out remaining spaces													
Fiber	Type	Fiber Count	Singlemode Multimode	Connector 1	Polish 1	Connector 2	Polish 2	Cable Total Length	Meters, Feet, Inches	Cable Furcation (Breakout) Length	Meters, Feet, Inches		
F Fiber	BJ Breakout Jumper	A 2-Ct OFNR Breakout Cable	5 Singlemode 9/125	1 ST	A APC (Angle)	1 ST	A APC (Angle)	001 1	M Meters	1 1	M Meters		
		B 2-Ct OFNP Breakout Cable		2 SC		2 SC		002 2		2 2		F Feet	
		C 4-Ct OFNR Breakout Cable		3 FC		3 FC		003 3		3 3		I Inches	
		D 4-Ct OFNP Breakout Cable	7 Multimode 50/125	4 MTRJ	U UPC (Ultra)	4 MTRJ	U UPC (Ultra)	through	I Inches	4 4			
		E 6-Ct OFNR Breakout Cable		5 LC	M Male (MT), for MTRJ connector only	5 LC	M Male (MT), for MTRJ connector only			5 5			
		F 6-Ct OFNP Breakout Cable		6 MU		6 MU				6 6			
		G 8-Ct OFNR Breakout Cable		7 E2000		7 E2000				7 7			
		H 8-Ct OFNP Breakout Cable	8 Multimode 62.5/125	8 DIN	F Female (MT), for MTRJ connector only	8 DIN	F Female (MT), for MTRJ connector only	999 999		8 8			
		I 10-Ct OFNR Breakout Cable		9 MPO		9 MPO				9 9			
		J 10-Ct OFNP Breakout Cable		0 D4		0 D4				0 10			
		K 12-Ct OFNR Breakout Cable											
		L 12-Ct OFNP Breakout Cable											
		M 2-Ct Armored OSP Breakout Cable											
		N 4-Ct Armored OSP Breakout Cable											
		O 6-Ct Armored OSP Breakout Cable											
		P 8-Ct Armored OSP Breakout Cable											
		Q 10-Ct Armored OSP Breakout Cable											
		R 12-Ct Armored OSP Breakout Cable											
		S 2-Ct Tight Buffer OSP Breakout Cable											
		T 4-Ct Tight Buffer OSP Breakout Cable											
U 6-Ct Tight Buffer OSP Breakout Cable													
V 8-Ct Tight Buffer OSP Breakout Cable													
W 10-Ct Tight Buffer OSP Breakout Cable													
Y 12-Ct Tight Buffer OSP Breakout Cable													

Specifications

- High-Performance Fiber Cable for Use in Fiber Optic Nodes
- Choose by Fiber Count, Fiber Mode, Connector Type, Connector Polish, Cable Length, and Cable Furcation Length
- Precision Manufactured
- Flame Retardant PVC Jacket
- 100% Factory Tested and Certified
- Excellent Insertion and Return Loss Characteristics
- Compliant with TIA/EIA-568B.3 and Telcordia Standards



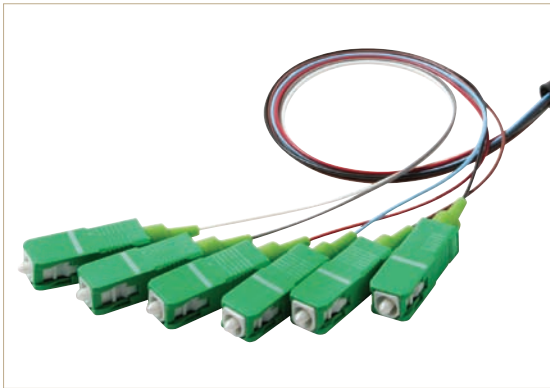
Pre-Terminated Indoor Cable Pigtail Assemblies

Ordering Instructions: Complete the form by filling in each block with the appropriate bold letter or number that corresponds to the choice in each menu item. The product must have a combination of 13 letters/numbers.
Example: FBPB52A002M2M

F	BP								
Fill out remaining spaces									
Fiber	Type	Fiber Count	Singlemode Multimode	Connector	Polish	Cable Total Length	Meters, Feet, Inches	Cable Furcation (Breakout) Length	Meters, Feet, Inches
F Fiber	BP Breakout Pigtail	A 2-Ct OFNR Breakout Cable	5 Singlemode 9/125	1 ST	A APC (Angle)	001 1	M Meters	1 1	M Meters
		B 2-Ct OFNP Breakout Cable	7 Multimode 50/125	2 SC	P PC	002 2	F Feet	2 2	F Feet
		C 4-Ct OFNR Breakout Cable	8 Multimode 62.5/125	3 FC	U UPC (Ultra)	003 3	I Inches	3 3	I Inches
		D 4-Ct OFNP Breakout Cable		4 MTRJ	M Male (MT), for MTRJ connector only	<i>through</i>	4 4	4 4	
		E 6-Ct OFNR Breakout Cable	5 LC	6 MU	F Female (MT), for MTRJ connector only	999 999	5 5	5 5	
		F 6-Ct OFNP Breakout Cable	6 E2000	7 DIN			6 6	6 6	
		G 8-Ct OFNR Breakout Cable	8 DIN	9 MPO			7 7	7 7	
		H 8-Ct OFNP Breakout Cable	9 MPO	0 D4			8 8	8 8	
		I 10-Ct OFNR Breakout Cable					9 9	9 9	
		J 10-Ct OFNP Breakout Cable							
		K 12-Ct OFNR Breakout Cable							
		L 12-Ct OFNP Breakout Cable							
		M 2-Ct Armored OSP Breakout Cable							
		N 4-Ct Armored OSP Breakout Cable							
		O 6-Ct Armored OSP Breakout Cable							
		P 8-Ct Armored OSP Breakout Cable							
		Q 10-Ct Armored OSP Breakout Cable							
		R 12-Ct Armored OSP Breakout Cable							
		S 2-Ct Tight Buffer OSP Breakout Cable							
		T 4-Ct Tight Buffer OSP Breakout Cable							
		U 6-Ct Tight Buffer OSP Breakout Cable							
		V 8-Ct Tight Buffer OSP Breakout Cable							
		W 10-Ct Tight Buffer OSP Breakout Cable							
		Y 12-Ct Tight Buffer OSP Breakout Cable							

Specifications

- High-Performance Fiber Cable for Use in Fiber Optic Nodes
- Customized by Fiber Count, Fiber Mode, Connector Type, Connector Polish, Cable Length and Cable Furcation Length
- Precision Manufactured
- Flame Retardant PVC Jacket
- 100% Factory Tested and Certified
- Excellent Insertion and Return Loss Characteristics
- Compliant with TIA/EIA-568B.3 and Telcordia Standards



Connectors

Ordering Instructions: Complete the form by filling in each block with the appropriate bold letter or number that corresponds to the choice in each menu item. The product must have a combination of 10 letters/numbers.
Example: FC5S2A20PC

F		C						
<i>Fill out remaining spaces</i>								
Fiber	Type	Singlemode Multimode	Simplex/ Duplex	Connector	Polish	Cable Diameter	Assembly Type and Ferrule Type	
F Fiber	C Connector	5 Singlemode 125µm	S Simplex	1 ST	A APC (Angle)	30 3.0mm	BU Bulk	
		6 Multimode 126µm	D Duplex	2 SC	P PC	20 2.0mm	OP One piece	
		8 Multimode 127µm		3 FC	M Male (MT), for MTRJ connector only	18 18.mm	PC Pre-dome single piece	
				4 MTRJ	F Female (MT), for MTRJ connector only	16 1.6mm	AC Conical ferrule single piece	
				5 LC		09 0.9mm	AS Step ferrule single piece	
				6 MU			CP Pre 8° conical ferrule single piece	
				7 E2000			CS Pre 8° step ferrule single piece	
				8 DIN				
				9 MPO				
				0 D4				

Specifications

- Categorized by Fiber Mode, Simplex or Duplex Construction, Connector Type, Connector Polish, Cable Diameter, Assembly Type and Ferrule Type
- One-Piece Construction
- Precision Manufactured
- 100% Factory Tested and Certified
- Compliant with TIA/EIA-568B.3 and Telcordia Standards



ST



SC



FC



MTRJ



LC



MU



E2000



DIN



MPO



D4



Adapters

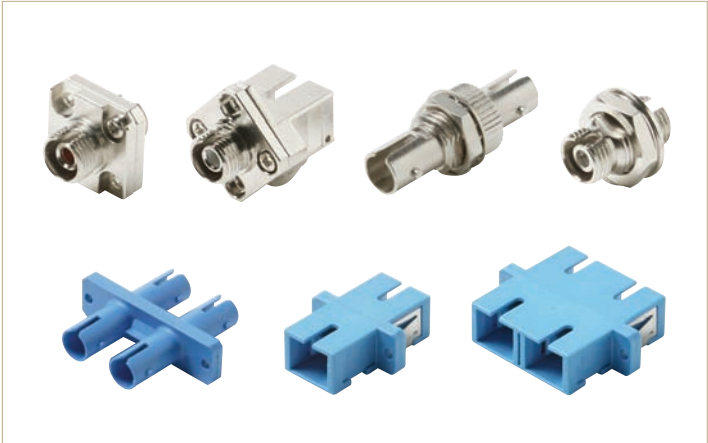
Ordering Instructions: Complete the form by filling in each block with the appropriate bold letter or number that corresponds to the choice in each menu item. The product must have a combination of 13 letters/numbers.
Example: FDM DHS0101PZ0

F	D								
<i>Fill out remaining spaces</i>									
Fiber	Type	Material	Shape	Simplex/ Duplex	Connector 1	Connector 2	Polish	Sleeve	Color <small>(Only for Plastic Adapter)</small>
F Fiber	D Adapters	M Metal P Plastic B Bare	DH "D" Hole for ST & FC Simplex for Metal DD "DD" Hole for ST, FC, & DIN Simplex for Metal RF Rectangular Flange SF Square Flange VD Vertical Duplex for SC Type QU Quad for SC Type	S Simplex D Duplex	01 ST 02 SC 03 FC 4M MTRJ/ Male 4F MTRJ/ Female 05 LC 06 MU 07 E2000 08 DIN 09 MPO 00 D4	01 ST 02 SC 03 FC 4M MTRJ/ Male 4F MTRJ/ Female 05 LC 06 MU 07 E2000 08 DIN 09 MPO 00 D4	P PC ¹ F APC (Angle) ²	Z Zirconia P Phosphor Bronze N No Sleeve (for MTRJ & MPO)	N None (for Metal Adapter) 0 Blue 1 Green (APC) 2 Beige 3 Black 4 Yellow 5 Custom

¹FC/PC FDM: Slot Width=2.2±0.05
 SC/PC FDM: Tabs Color Coded Blue
²FC/APC FDM: Slot Width=2.2±0.02mm
 SC/APC FDM: Tabs Color Coded Green

Specifications

- Categorized by Type of Material, Simplex or Duplex Construction, Shape, Connector Type, Connector Polish, Type of Sleeve and Color
- Precision Manufactured
- Molded Thermoplastic or Nickel-Plated Brass Bodies
- Zirconia or Phosphor Bronze Sleeves
- 100% Factory Tested and Certified
- Compliant with TIA/EIA-568B.3 and Telcordia Standards



Terminators

Ordering Instructions: Complete the form by filling in each block with the appropriate bold letter or number that corresponds to the choice in each menu item. The product must have a combination of 4 letters/numbers.
Example:FT1P

F	T		
<i>Fill out remaining spaces</i>			
Fiber	Type	Connector	Polish
F Fiber	T Terminator	1 ST 2 SC 3 FC 4 LC 5 MU	A APC (Angle) P PC U UPC (Ultra)



Specifications

- Categorized by Connector Type and Polish
- Improves Signal Performance
- Maintains Neat Appearance
- Protects Unused Ports from Damage
- Reduces Back Reflections on Unused Ports
- Precision Manufactured
- Low Back Reflection
- High Power Endurance
- Simple Manipulation
- 100% Factory Tested and Certified
- Compliant with TIA/EIA-568B.3 and Telcordia Standards



Attenuators

Ordering Instructions: Complete the form by filling in each block with the appropriate bold letter or number that corresponds to the choice in each menu item. The product must have a combination of 8 letters/numbers.
Example: FA822A20

F	A					
<i>Fill out remaining spaces</i>						
Fiber	Type	Singlemode Multimode	Wavelength	Connector	Polish	Attenuation Loss (dB)*
F Fiber	A Attenuator	5 Singlemode 9/125	1 1310nm	1 ST	A APC (Angle)	01 1dB
			2 1550nm	2 SC		02 2dB
			3 1310 & 1550nm	3 FC		03 3dB
			4 850nm	4 LC		05 5dB
			5 850 & 1300nm	5 MU		10 10dB
				15 15dB		
				20 20dB		
				25 25dB		

* Custom Attenuation Values Available Upon Request



Specifications

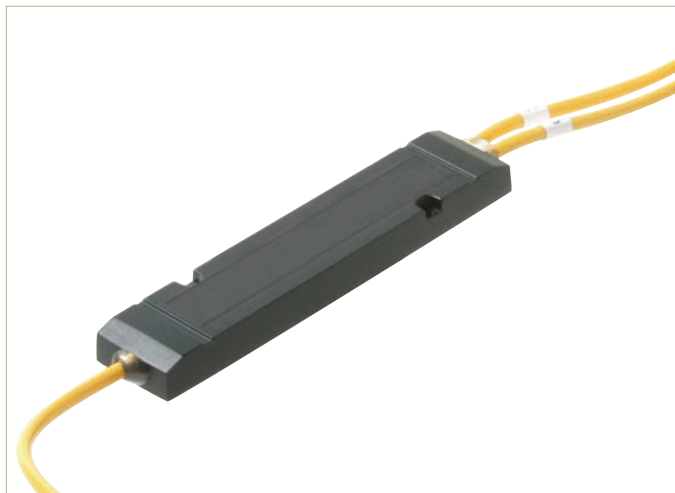
- Categorized by Fiber Mode, Wavelength, Connector Type, Connector Polish, Attenuation
- Precision Manufactured
- Low Ripple
- Excellent Environmental Stability
- 300mW Power-Handling Capability
- Polarized Insensitive
- Attenuator Values from -1 to -25dB
- Doped Fiber Process
- 100% Factory Tested and Certified
- Excellent Insertion and Return Loss Characteristics
- Compliant with TIA/EIA-568B.3 and Telcordia Standards



Wavelength Division Multiplexers

Ordering Instructions: Complete the form by filling in each block with the appropriate bold letter or number that corresponds to the choice in each menu item. The product must have a combination of 11 letters/numbers.
Example: FW350S1BB1P

F	W	35	0	S	1		B		
<i>Fill out remaining spaces</i>									
Fiber	Type	Wavelength	Fiber Type	Grade	Port	Package Type	Pigtail Length	Connector	Polish
F Fiber	W Wavelength Division Multiplexer (WDM)	35 1310/1550nm	0 SMF-28	S Super	1 1x2	B 250µm Bare Fiber L 900µm Loose Tube 3 □3mm Cable	B 1 Meter	N No Connector 1 ST 2 SC 3 FC 5 LC 6 MU	O No Polish P PC U UPC (Ultra) A APC (Angle)



Specifications

- Combines Multiple Optical Frequencies onto a Single Fiber
- Manufactured with Fused Taper Technology
- Categorized by Package Type, Connector Type and Connector Polish
- 1310/1550nm Wavelength
- SMF-28 Fiber
- Super Grade
- 1 x 2 Port Configuration
- 1m Pigtail Length
- Precision Manufactured
- 100% Factory Tested and Certified
- Compliant with TIA/EIA-568B.3 and Telcordia Standards



Splitters

Ordering Instructions: Complete the form by filling in each block with the appropriate bold letter or number that corresponds to the choice in each menu item. The product must have a combination of 15 letters/numbers.
Example: FSX5SN13SA1BA2P

F	S													
----------	----------	--	--	--	--	--	--	--	--	--	--	--	--	--

Fill out remaining spaces

Fiber	Type	Splitter Structure	Singlemode Multimode	Coupler Mode	Band Type	Wavelength	Grade	Port	Coupling Ratio %	Package	Pigtail Length Meters Only	Connector	Polish			
F Fiber	S Splitter	X X Type	5 Singlemode 9/125	S Single Window	N Narrow Band	13 1310nm	S Super	A1x2	1 1/99	B 250µm Bare Fiber M 250µm Bare Fiber for Mini Coupler L 900µm Loose Tube 2 □2mm Cable 3 □3mm Cable G 250µm Bare Fiber with LGX BOX	A 0.5 Meters	N No Conn.	O No Polish			
		Y Y Type						B 1x3	2 5/95					B 1 Meter	1 ST	P PC
		T Tree Type						C1x4	3 10/90							
		7 Multimode 50/125	D Dual Window	D Broad Band	35 1310 & 1550nm	U Ultra	D 1x8	4 20/80	C 1.5 Meters		2 SC	U UPC (Ultra)				
							E 1x16	5 30/70								
							F 1x32	6 40/60								
		8 Multimode 62.5/125			85 850nm		G 2x2	7 50/50	D 2 Meters		3 FC	A APC (Angle)				
							H 4x4	8 15/85								
							I 8x8	9 25/75								
					83 850 & 1300nm		J 16x16	0 35/65			4 LC					
								A 45/55			5 MU					
								B 333/33.3/33.4								
								C 25/25/25/25								
								D 12.5/12.5/12.5/12.5/ 12.5/12.5/12.5/12.5								
								E 6.25/6.25/6.25/6.25/ 6.25/6.25/6.25/6.25/ 6.25/6.25/6.25/6.25/ 6.25/6.25/6.25/6.25/								



Specifications

- Combines Optical Signals from Multiple Fibers or Divide Signals to Different Fibers
- Categorized by Splitter Structure, Fiber Mode, Single or Dual Window Mode, Bandwidth, Wavelength, Grade, Port Configuration, Coupling Ratio, Package, Pigtail Length, Connector Type and Connector Polish
- Precision Manufactured
- 100% Factory Tested and Certified
- Compliant with TIA/EIA-568B.3 and Telcordia Standards

