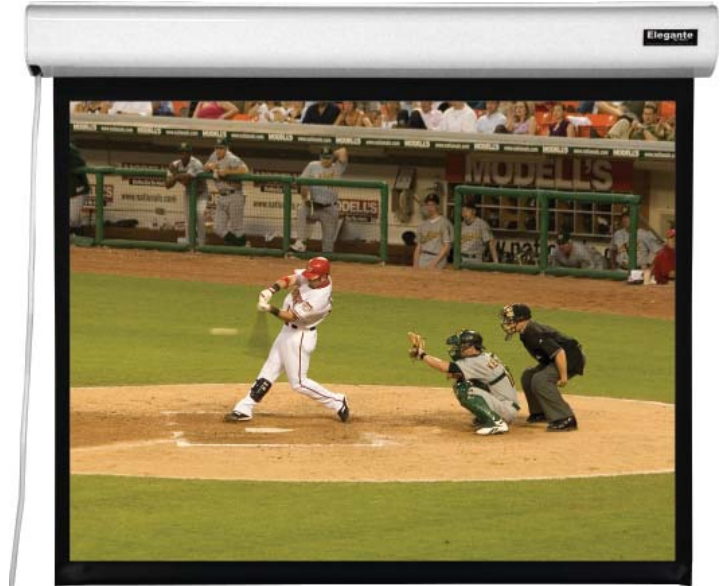


## Plug-and-View Motorized Screen for Wall or Ceiling

### FEATURES

- Convenient in-line plug
- Three-position in-line switch
- Vutec EMS™ (EZ-Mounting System) included
- One-person installation—can be adjusted after mounting
- Wall or ceiling mounted
- 1" vertical black borders
- Matte white or matte gray screen surface
- 6" of black leader
- Heavy duty aluminum housing with choice of black or white finish
- Available in 110 Volt or 220 Volt for export
- Made in USA



The Elegante motorized screen, is a competitively priced motorized projection screen, featuring a durable all aluminum housing for wall or ceiling applications. Representing the best value in its class, Elegante motorized screen comes standard with value-added features, including Vutec's EMS™ EZ-Mounting System, for wall or ceiling applications.

Providing users with maximum versatility, Elegante motorized screen also interfaces with low voltage relays, IR and RF remote controls and is available in 4:3 (Video) and 16:9 (HDTV) formats in Matte White and Matte Gray screen surfaces.

### DIAGONAL SIZES

Standard (4:3) : 72" - 120"

HDTV (16:9) : 80" - 110"

### TECHNICAL



### SURFACES

- Matte White
- Matte Gray

