

# Telephony & Twisted Pair Products

Flat Cable Modular Plugs • Telephone Adapters • Keystone Surface Mount Boxes • Snap-In Patch Panels



Flat-Cable Modular Plugs  
D3



Round-Cable Modular Plugs  
D3



CAT5E RJ45 Modular Plugs  
D3



Shielded RJ45 Modular Plugs  
D3



Fast Media™  
CAT6 Modular Plug  
D4



IDC Splicing Connectors  
D4



Mid-Size Telephony-TV Plates  
D6



Blank Cover Plate  
D6



Junction Box  
D6



Round Phone Jack  
D7



Wall Phone Jacks  
D7



Decorator-Style Wall Plates  
D7



Decorator-Style Inserts  
D10



Round-Cavity Decorator  
Style Inserts  
D10



AV Connectors  
D10



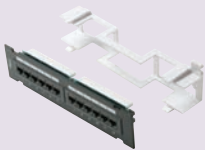
Keystone Modular Jacks  
D11



Category-5E Keystone Jacks  
D11



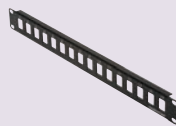
Category-5E Tool-less Jack  
D11



CAT5E 110-IDC Patch Panels  
D15



Fast Media™ CAT6 Patch Panels  
D15



Snap-In Patch Panels  
D16



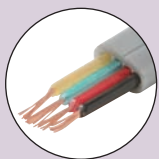
Cable Management Panel  
D16



Rack-Mounted Surge Strip  
D16



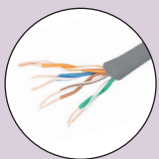
Hinged Wall-Mount Brackets  
D17



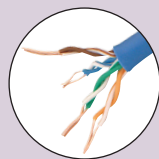
Bulk Flat Modular Cable  
D21



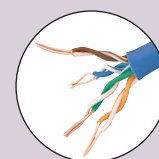
Bulk Round Station Wire  
D21



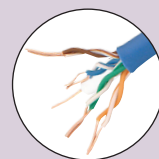
UTP Category-3 Bulk Cable  
D22



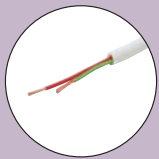
UTP Category-5E Bulk Cable  
D23



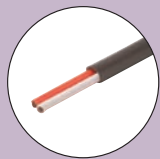
Plenum Category-5E Cable  
D23



Plenum Category-5E Cable  
D23



Signal/Control Cable  
D26



Thermostat Cable  
D26



Modular Telephony Cords  
D27



Modular Data Cables  
D27



Telephony Extensions  
D28



Telephony Distribution Block  
D28



Flush-Mold Booted CAT5E Cords  
D30



Fast Media™ CAT6 Patch Cords  
D31



Modular-Plug Crimp Tools  
D32



Connector Crimp Tool  
D32



Cable Preparation Tools  
D33



Network Cable Tester  
D33

# Telephony & Twisted Pair Products

Modular Line Cords • Fast Media™ CAT6 Cable • Modular Data Cables • Alarm Modular Cable • Cable Locator



Bean Wire Connectors  
D4



RJ45 Snagless Boot  
D4



Modular Cable Clip  
D4



Telephony Wall Plates  
D5



Mid-Size Telephony Plates  
D5



Telephony-TV Wall Plates  
D6



Receptacle Wall Plates  
D7



Modular Surface Jacks  
D8



Telephone Adapters  
D8



Keystone Wall Plates  
D9



Angled Keystone Wall Plates  
D9



Decorator Style Wall Plates  
D10



Fast Media™ Category-6 Jacks  
D12



Fast Media™ CAT6 Tool-less  
Keystone Jack  
D12



Keystone Modular Inserts  
D13



Category-5E Keystone Jacks  
D14



Keystone Surface Mount Boxes  
D14



Category-5E Couplers  
D14



50-Pair Wiring Blocks  
D17



Bridging Clip  
D17



Distribution Spool  
D17



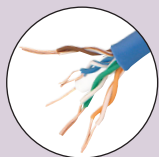
Cable Distribution "D" Rings  
D17



FastHome™  
Network Enclosures  
D18



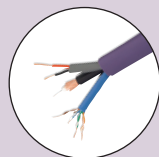
FastHome™ Network Modules  
D19-D20



Fast Media™ UTP CAT6 Cable  
D24



Fast Media™ Plenum  
UTP CAT6 Cable  
D24



Structured Wiring Cables  
D25

# D

## QUICK - FIND Guide to Product



Alarm Modular Cable  
D28



Coiled Handset Cords  
D28



Non-Booted CAT5E Patch Cords  
D29



Cable Locator  
D33



Punch-Down Tools  
D34



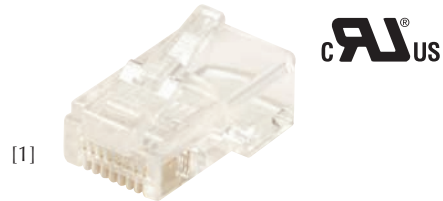
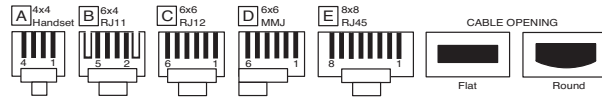
Punch-Down Blades  
D34

## Telephony & Twisted Pair Products

### Flat-Cable Modular Plugs

Terminates 24-26 AWG flat stranded cable  
High-Impact Clear Polycarbonate Plugs  
UL and Non-UL Versions

- [1] **300-062** 4C 4x4 Handset Plug [A]
- [1] **300-064** 4C 6x4 RJ11 Modular Plug [B]
- [1] **300-066** 6C 6x6 RJ12 Modular Plug [C]
- [1] **300-067** 6C 6x6 RJ12 DEC MMJ Plug [D]
- [1] **300-068** 8C 8x8 RJ45 Modular Plug [E]
- [1] **301-064** 4C 6x4 RJ11 Modular Plug UL [B]
- [1] **301-066** 6C 6x6 RJ12 Modular Plug UL [C]
- [1] **301-068** 8C 8x8 RJ45 Modular Plug UL [E]



### Round-Cable Modular Plugs

Terminates 24-26 AWG round solid/stranded cable  
High-Impact Clear Polycarbonate Plugs

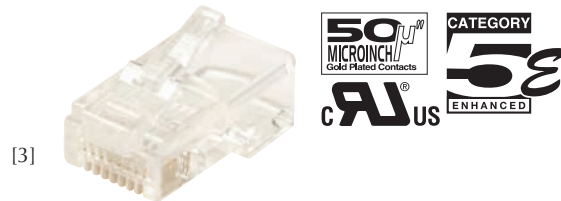
- [2] **300-164** 4C 6x4 RJ11 Round-Solid Plug [B]
- [2] **300-166** 6C 6x6 RJ12 Round-Solid Plug [C]
- [2] **300-168** 8C 8x8 RJ45 Round-Solid Plug [E]
- [2] **300-170** 8C 8x8 RJ45 Round-Stranded Plug [E]



### CAT5E RJ45 Modular Plugs

Suitable for Category-5E Cable Installation  
Conforms to FCC Part 68 requirements  
Terminates 24-28 AWG solid/stranded cable  
High-Impact Clear Polycarbonate Plugs  
Flame Auto-Extinguish Level UL94V-0

- [3] **301-172** 8x8 RJ45 Round-Stranded Plug [E]
- [3] **301-176** 8x8 RJ45 Round-Solid Cable Plug [E]  
– 2-Prong
- [3] **301-178** 8x8 RJ45 Round-Solid Cable Plug [E]  
– 3-Prong



### Shielded RJ45 Modular Plugs

Suitable for Category-5E Cable Installations  
Terminates 24-28 AWG solid or stranded cable  
High-Impact Clear Polycarbonate Housing  
Flame Auto-Extinguish Level UL94V-0

- [4] **301-182** 8x8 RJ45 Round-Stranded Plug [E]
- [4] **301-188** 8x8 RJ45 Round-Solid Plug [E]  
– 3-Prong



# Telephony & Twisted Pair Products

## Fast Media™ CAT6 Modular Plug

- [5] **301-191** Fast Media™ CAT6 Modular Plug  
One-piece Design for Quick Assembly  
Suitable for All RJ45 Connections  
Designed to Fit Solid CAT6 Cable  
Precision Manufactured Polycarbonate  
Accepts 22-24 AWG solid copper wire  
Uses standard modular plug crimp tools  
UL Listed



## IDC Splicing Connectors

Insulation Displacement Contact (IDC) Connectors  
Securely splices solid copper wire  
Gel Filled for Superior Anti-Corrosion Properties

- [6] **300-071** UY 2-Wire IDC Connector  
Splices 22-26 AWG wire  
Polypropylene Body – Yellow
- [7] **300-072** UR 3-Wire IDC Connector  
Splices 19-26 AWG wire  
Polycarbonate Body – Red
- [8] **300-073** UB In-Line Tap IDC Connector  
Splices 22-26 AWG wire  
Polypropylene Body – Blue
- [9] **300-075** UG In-Line Tap IDC Connector  
Splices 22-26 AWG wire  
Polypropylene Body – Green
- [7] **300-076** UR2 3-Wire IDC Connector  
Splices 19-26 AWG wire  
Polypropylene Body – Red



## Bean Wire Connectors

Crimp Type Bean Wire Connectors  
Securely splices 19-26 AWG solid copper wire

- [10] **300-070** B Wire Connector
- [10] **300-077** B Wire Connector Gel-Filled



## RJ45 Snagless Boot

- [11] **300-080** Suitable for Round 0.25" Dia. UTP Cable  
Provides cable-end color ID,  
added strain relief and plug tab protection  
when pulling through ceilings and  
under floors



Colors Available **BK** **BL** **GR** **GY** **RD** **WH** **YL**

## Flat-Cable Clip

- [12] **300-954** Plastic Nail-In Fastener  
Suitable for 4C Flat Modular Cable  
Pre-Installed 1" Carbon-Steel Nails  
Suitable for Wood, Plaster, Mortar or  
Concrete Block



Colors Available **WH**



## Telephony & Twisted Pair Products

### Telephony Wall Plates

Modular Telephone or Data Standard Wall Plates  
 High-Impact ABS Plastic – Gold-Plated Contacts  
 Flush-Mount Smooth Finish  
 Matching-Color Mounting Screws  
 2 3/4" (W) x 4 1/2" (H)

[1] **300-204** 4C Jack Plate

Colors Available **AL** **IV** **LA** **WH**

[1] **300-206** 6C Jack Plate

Colors Available **IV** **WH**

[2] **300-214** 4C Dual Jack Plate

Colors Available **AL** **IV** **LA** **WH**

[2] **300-215** 4C-Looped Dual Jack Plate

[2] **300-216** 6C Dual Jack Plate

Colors Available **IV** **WH**

[3] **301-004** 4C Jack Textured Plate UL

Colors Available **WH**

[1] **301-204** 4C Jack Plate UL

[2] **301-214** 4C Dual Jack Plate UL

Colors Available **AL** **IV** **WH**

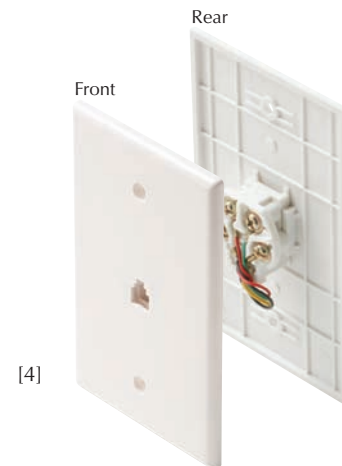
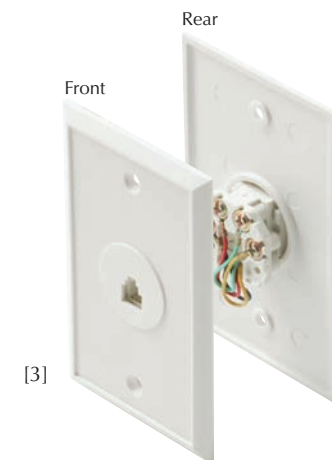
### Mid-Size Telephony Plates

Modular Telephone or Data Mid-Size Wall Plates  
 High-Impact ABS Plastic – Gold-Plated Contacts  
 Flush-Mount Smooth Finish  
 Matching-Color Mounting Screws  
 3 1/8" (W) x 4 7/8" (H)

[4] **300-203** 4C Jack Plate Mid-Size

[5] **300-213** 4C Dual Jack Plate Mid-Size

Colors Available **AL** **IV** **LA** **WH**



# Telephony & Twisted Pair Products

## Telephony-TV Wall Plates

Telephone-TV/Satellite Wall Plates  
 Suitable for CATV or DBS Installations  
 High-Impact ABS Plastic – Gold-Plated Contacts  
 Flush-Mount Smooth Finish  
 Matching-Color Mounting Screws  
 2 3/4"(W) x 4 1/2"(H)



[6] **300-234** 4C Tel-TV Jack Plate

Colors Available **AL** **IV** **LA** **WH**

[6] **300-235** 4C Tel-TV Jack Plate– 2.5GHz

Colors Available **AL** **IV** **WH**

[7] **300-237** 4C 2xTV Phone Plate

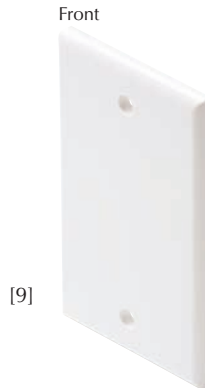
Colors Available **IV** **WH**

[7] **300-238** 4C 2xTV Phone Plate – 2.5GHz

Colors Available **AL** **IV** **WH**

[6] **301-234** 4C Tel-TV Jack Plate UL

Colors Available **AL** **IV** **WH**



## Mid-Size Telephony-TV Plate

[8] **300-233** 4C Tel-TV Jack Mid-Size Wall Plate  
 Suitable for CATV or DBS Installations  
 High-Impact ABS Plastic  
 Gold-Plated Contacts  
 Flush-Mount Smooth Finish  
 Matching-Color Mounting Screws  
 3 1/8"(W) x 4 7/8"(H)

Colors Available **AL** **IV** **LA** **WH**

## Blank Cover Plate

[9] **200-258** Single-Gang Blank Cover Plate  
 High-Impact ABS Plastic  
 Flush-Mount Smooth Finish  
 Matching-Color Mounting Screws  
 2 3/4"(W) x 4 1/2"(H)

Colors Available **AL** **BR** **IV** **LA** **WH**

## Junction Box

[10] **310-100** Surface Mount Junction Box  
 Suitable for Single-Gang Telephone or  
 Data Wall Plates  
 High-Impact ABS Plastic  
 Threaded Brass Inserts for  
 Plate Mounting Screws  
 2 3/4"(W) x 4 1/2"(H) x 1 7/8"(D)

Colors Available **IV** **WH**



## Telephony & Twisted Pair Products

### Round Phone Jack

- [1] **300-054** 4C Round Modular Telephone Jack Plate  
High-Impact ABS Plastic  
Gold-Plated Contacts  
Matching-Color Mounting Screws

Colors Available **IV** **WH**



[1]



[2]

### Wall Phone Jacks

Wall-Mounted-Telephone Modular Jack Plates  
High-Impact ABS Plastic – Gold-Plated Contacts  
Matching-Color Mounting Screws

- [2] **300-094** 4C Wall-Phone Jack
- [2] **301-094** 4C Wall-Phone Jack UL

Colors Available **IV** **WH**

- [3] **300-095** 4C Steel Wall-Phone Jack



[3]



[4]



[5]

### Decorator-Style Wall Plates

Single-Gang Decorator-Style Flush Plates  
Mounts in standard electrical boxes  
Includes cover plate and jack assembly  
High-Impact ABS Plastic Mounting Bracket  
Gold-Plated Contacts  
Matching-Color Mounting Screws  
2 3/4"(W) x 4 1/2"(H)

- [4] **300-003** 4C Decorator Jack
- [5] **300-013** 4C Decorator Dual Jack
- [6] **300-103** 4C Tel-TV Decorator Plate  
Gold-Plated F81 Connector

Colors Available **IV** **LA** **WH**



[6]



[7]



[8]

### Receptacle Wall Plates

Suitable for Standard-Size Single and Duplex Electrical Receptacles  
Fits standard electrical switch boxes  
High-Impact ABS Plastic – Smooth Finish  
Includes matching-color mounting screws – UL Listed  
Single – 2 3/4"(W) x 4 1/2"(H) x 5/16"(D)  
Dual – 4 1/16"(W) x 4 1/2"(H) x 5/16"(D)

- [7] **310-820** Single-Gang Duplex Receptacle Plate
- [8] **310-822** Dual-Gang Duplex Receptacle Plate
- [9] **310-830** Single-Gang Single Receptacle Plate

Colors Available **IV** **LA** **WH**



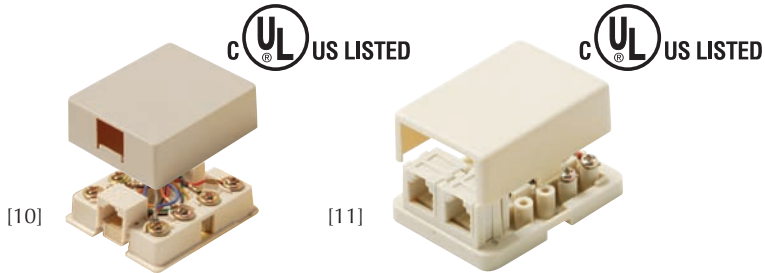
[9]



# Telephony & Twisted Pair Products

## Modular Surface Jacks

Modular Telephone or Data Surface Jacks  
High-Impact ABS Plastic with Mounting Screws  
Gold-Plated Contacts



- [10] **300-145** 4C Surface Jack
- [11] **300-146** 4C Surface Dual Jack
- [10] **300-147** 6C Surface Jack
- [10] **300-149** 8C Surface Jack

Colors Available **IV** **WH**

- [10] **300-156** 4C Surface Dual Jack – Separately Wired

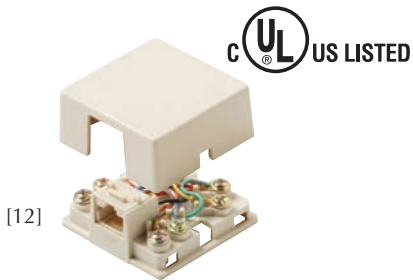
Colors Available **IV**

- [10] **301-145** 4C Surface Jack UL
- [12] **301-146** 4C Surface Dual Jack UL
- [10] **301-147** 6C Surface Jack UL
- [10] **301-149** 8C Surface Jack UL

Colors Available **IV** **WH**

- [12] **301-153** 8C RJ31X Jack UL with Shorting Bar Suitable for Alarm System Installations

Colors Available **IV**



## Telephone Adapters

Modular Telephony Adapters  
Cross-Wired for Telephone or Straight-Wired for Data Applications  
High-Impact ABS Plastic – Gold-Plated Contacts

- [13] **300-024** 4C Tee Adapter

Colors Available **IV** **WH**

- [13] **300-026** 6C Tee Adapter
- [13] **300-028** 8C-Keyed Tee Adapter

Colors Available **IV**

- [14] **300-034** 4C Coupler – Voice

Colors Available **IV** **WH**

- [14] **300-036** 6C Coupler – Voice
- [14] **300-037** 6C Coupler – Data
- [14] **300-038** 8C-Keyed Coupler – Voice
- [14] **300-039** 8C-Keyed Coupler – Data
- [15] **300-074** 4C Tee Adapter 3-Jacks
- [16] **300-124** 4C Tee 3-Jacks 1-Plug

Colors Available **IV**

- [17] **300-324** 4C Tee 3-Jacks 1-Plug 6x2 6x2 6x4 Jacks to 6x4 Plug

- [13] **301-024** 4C Tee Adapter UL
- [17] **301-324** 4C Tee 3-Jacks 1-Plug 6x2 6x2 6x4 Jacks to 6x4 Plug UL

Colors Available **IV** **WH**





## Telephony & Twisted Pair Products

### Keystone Wall Plates

Flush Mount Wall Plates – 1, 2, 3, 4 or 6 Cavity  
 Create video, voice or data outlets using  
 F, BNC, RCA, S-Video and fiber connections  
 Holds industry standard modular keystone inserts for  
 custom installations  
 Smooth Finish High-Impact ABS Construction  
 Matching-Color Mounting Screws – UL Listed  
 2 3/4"(W) x 4 1/2"(H)

[1] **310-201** 1-Cavity Keystone Plate

Colors Available **AL** **IV** **LA** **WH**

[2] **310-202** 2-Cavity Keystone Plate

Colors Available **AL** **BK** **IV** **LA** **WH**

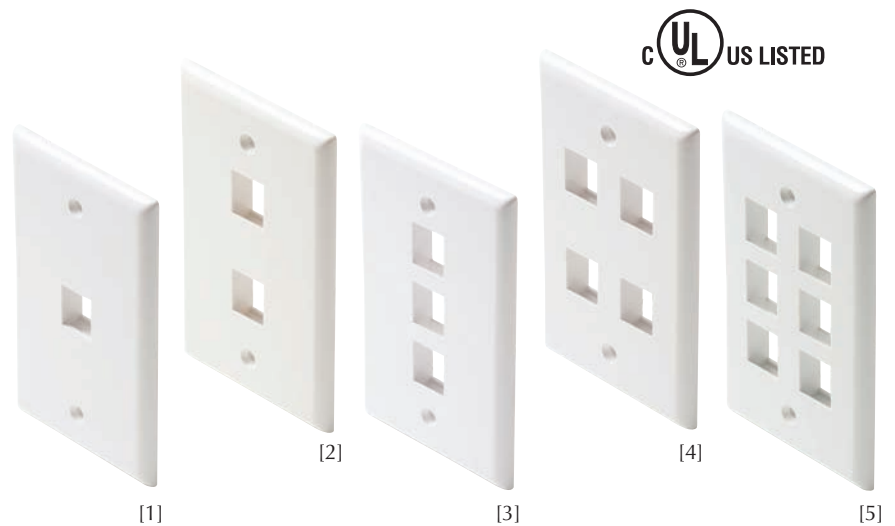
[3] **310-203** 3-Cavity Keystone Plate

[4] **310-204** 4-Cavity Keystone Plate

Colors Available **AL** **IV** **LA** **WH**

[5] **310-206** 6-Cavity Keystone Plate

Colors Available **AL** **BK** **IV** **LA** **WH**



### Angled Keystone Wall Plates

Angled Single-Gang Keystone Wall Plates  
 Provides compactness and reduces pressure on  
 patch cord connectors  
 Holds industry standard modular keystone inserts for  
 custom installations  
 Smooth Finish High-Impact ABS Construction  
 Includes blank labels and matching-color  
 mounting screws – UL Listed

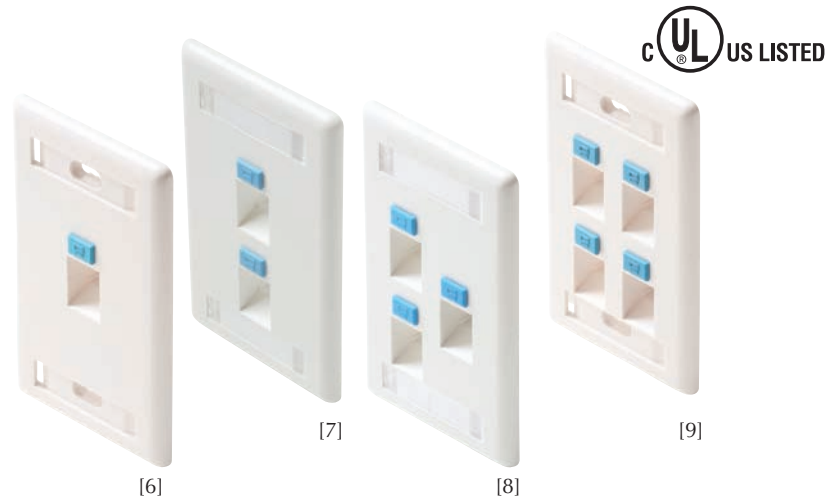
[6] **310-701** 1-Cavity Angled Keystone Wall Plate

[7] **310-702** 2-Cavity Angled Keystone Wall Plate

[8] **310-703** 3-Cavity Angled Keystone Wall Plate

[9] **310-704** 4-Cavity Angled Keystone Wall Plate

Colors Available **IV** **WH**



### Decorator-Style Wall Plates

Decorator-Style Flush Wall Plates  
 Ideal for Residential or Commercial Structured Wiring  
 Designed for Custom Indoor Audio/Video Applications  
 Holds Steren's Decorator-Style Inserts  
 Smooth Finish High-Impact ABS Plastic  
 Matching-Color Mounting Screws – UL Listed

[10] **310-801** Single-Gang Decorator Plate

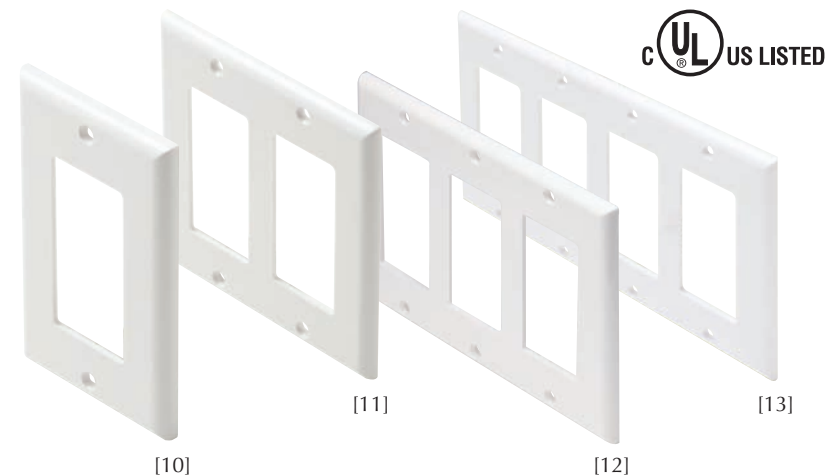
[11] **310-802** Dual-Gang Decorator Plate

[12] **310-803** Three-Gang Decorator Plate

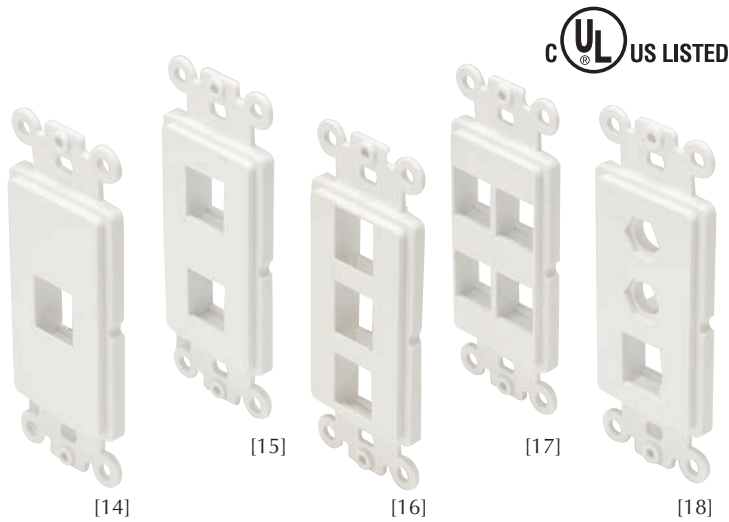
Colors Available **AL** **IV** **WH**

[13] **310-804** Four-Gang Decorator Plate

Colors Available **IV** **LA** **WH**



# Telephony & Twisted Pair Products

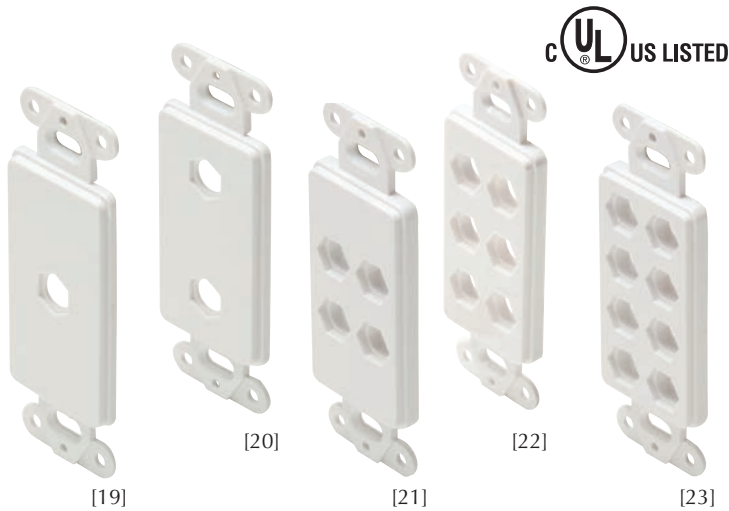


## Decorator-Style Inserts

For Use with Decorator-Style Wall Plates  
 Holds industry standard modular keystone inserts for custom installations  
 Smooth Finish High-Impact ABS Plastic Construction  
 Matching-Color Mounting Screws – UL Listed

- [14] **310-851** 1-Cavity Decorator Insert
- [15] **310-852** 2-Cavity Decorator Insert
- [16] **310-853** 3-Cavity Decorator Insert
- [17] **310-854** 4-Cavity Decorator Insert
- [18] **310-860** 1-Cavity Decorator Insert with 2 F-Connector F81 Inserts

Colors Available **WH**



## Round-Cavity Decorator-Style Inserts

Ideal for Residential or Commercial Structured Wiring  
 Designed for Custom Indoor Audio/Video Applications  
 Fits securely into Steren's Decorator-Style Wall Plates  
 Holds Steren's A/V Connectors  
 Smooth Finish High-Impact ABS Plastic  
 1, 2, 4, 6 and 8 Round-Cavity Styles  
 Matching-Color Mounting Screws – UL Listed

- [19] **310-871** 1-Cavity Decorator-Style Insert
- [20] **310-872** 2-Cavity Decorator-Style Insert
- [21] **310-874** 4-Cavity Decorator-Style Insert
- [22] **310-876** 6-Cavity Decorator-Style Insert
- [23] **310-878** 8-Cavity Decorator-Style Insert

Colors Available **WH**



## A/V Connectors

Gold-Plated Brass Construction  
 Used with Steren's Round-Cavity Decorator-Style Inserts  
 F and RCA Connectors with Red or White Insulators  
 Binding Post/Banana Connectors with Red or Black Bands

- [24] **251-503** F-F Single Coupler
- [25] **251-505** RCA Jack/RCA Jack – Red Band
- [25] **251-506** RCA Jack/RCA Jack – White Band
- [26] **251-507** RCA Jack/F Jack – Red Band
- [26] **251-508** RCA Jack/F Jack – White Band
- [27] **251-509** Single Binding Post/Banana Jack-Jack – Red Band
- [27] **251-510** Single Binding Post/Banana Jack-Jack – Black Band

Colors Available **BK BL GR RD WH YL**



## Telephony & Twisted Pair Products

### Keystone Modular Jacks

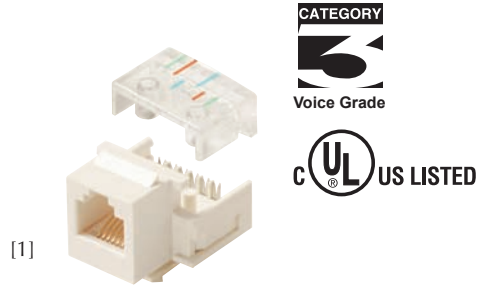
Category-3 Voice Grade UL Listed Keystone Jacks  
 Quick Snap-Down-Cover Termination  
 22-26 AWG IDC Contacts  
 UL94V-0 Thermoplastic ABS Housing

[1] **310-106** 6x6 RJ11 Keystone Jack

Colors Available **AL BK IV LA WH**

[1] **310-108** 8x8 RJ45 Keystone Jack

Colors Available **BK IV WH**



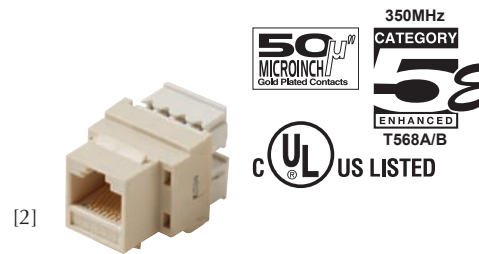
### Category-5E Keystone Jacks

Category-5E UL Verified and Listed Keystone Jacks  
 22-26 AWG 110-IDC Contacts  
 UL94V-0 Thermoplastic ABS Housing

[2] **310-110** RJ45 CAT5E Keystone Jack

[3] **310-120** RJ45 CAT5E 90° Keystone Jack

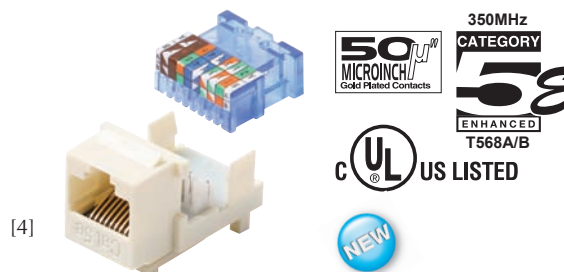
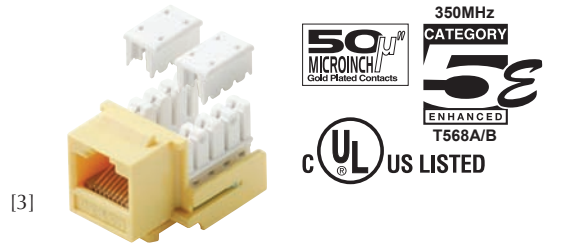
Colors Available **AL BK BL GR IV LA OR RD WH YL**



### Category-5E Tool-less Jack

[4] **310-131** CAT5E UL RJ45 Keystone Tool-less Jack  
 Quick and Secure Self-Terminating IDC Mechanism  
 22-26 AWG 110-IDC Contacts  
 UL94V-0 Thermoplastic ABS Housing

Colors Available **AL BK BL GR IV LA OR RD WH YL**



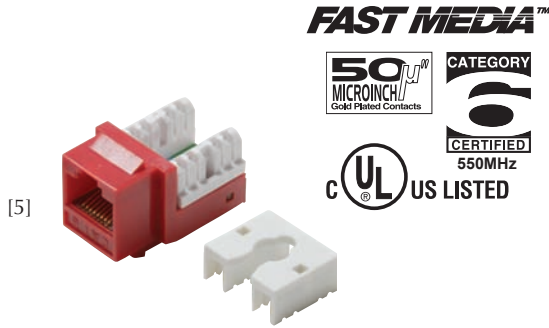
# Telephony & Twisted Pair Products

## Fast Media™ Category-6 Jack

[5] **310-140** Fast Media™ Category-6 UL Jack  
 22-24 AWG 110-IDC Contacts  
 UL94V-0 Thermoplastic ABS Housing

Colors Available

AL	BK	BL	GR	IV	LA	OR
PR	RD	WH	YL			



## Fast Media™ CAT6 Tool-less Keystone Jack

[6] **310-150** Fast Media™ Category-6 Tool-less Jack  
 Self-Terminating IDC Mechanism  
 22-24 AWG 110-IDC Contacts  
 UL94V-0 Thermoplastic ABS Housing

Colors Available

AL	BK	BL	GR	IV	LA	OR
PR	RD	WH	YL			



## Telephony & Twisted Pair Products

### Keystone Modular Inserts

Connector-Module Inserts Used with Keystone Wall Plates  
 Snap-in tabs make modules easy to insert and remove for adjustments and wiring changes  
 Create video, voice or data outlets using F, BNC, RCA, S-Video and other connections

[1] **310-410** BNC Keystone Insert

Colors Available **AL** **IV** **LA** **WH**



[2]



[2] **310-415** F Keystone Insert

Colors Available **AL** **BK** **IV** **LA** **WH**

[1]

[3] **310-416** F Keystone Insert – Gold

Colors Available **IV** **LA** **WH**

[3]



[4]



[4] **310-417** F-Blank Keystone Insert

Colors Available **AL** **IV** **WH**

[5] **310-420** Blank Keystone Cover

Colors Available **AL** **BK** **IV** **LA** **WH**

[5]



[6]



[6] **310-451** S-Video Jack-Plug Insert

[7] **310-452** S-Video Jack-Jack Insert

[8] **310-458** RCA Jack-Jack Green Band – Gold

[8] **310-459** RCA Jack-Jack Blue Band – Gold

Colors Available **WH**

[9] **310-461** RCA Red-Band – Gold

[9] **310-462** RCA Black-Band – Gold

[9] **310-463** RCA White-Band – Gold

[9] **310-464** RCA Yellow-Band – Gold

Colors Available **AL** **IV** **LA** **WH**

[7]



[8]



[10] **310-465** RCA Jack to F Jack White-Band – Gold

[10] **310-466** RCA Jack to F Jack Red-Band – Gold

Colors Available **IV** **LA** **WH**

[11] **310-467** Keystone Binding Post Black-Band – Gold

[11] **310-468** Keystone Binding Post Red-Band – Gold

Colors Available **IV** **WH**

[9]



[10]



[11]



# Telephony & Twisted Pair Products



## Category-5E Surface Jacks

Surface Mount Biscuit Block Jacks  
 Category-5E UL Verified and Listed  
 High-Reliability Printed-Circuit Board Design  
 110-Termination 22-26 AWG Tin-Lead Contact  
 High-Impact UL94V-0 Thermoplastic Housing  
 Installation kit includes mounting screws,  
 double-sided adhesive pad, designation label and  
 protective label-cover

- [12] **301-151** 1-Port CAT5e Surface Jack  
Rear and Side Cable Entrances
- [13] **301-152** 2-Port CAT5e Surface Jack  
Rear Cable Entrance

Colors Available **WH**



## Keystone Surface Mount Boxes

Surface Mount Keystone Non-Connectorized Biscuit Boxes  
 Holds industry standard modular keystone inserts  
 High-Impact UL94V-0 Thermoplastic Housing  
 Installation kit includes mounting screws,  
 double-sided adhesive pad, label and protective label cover

- [14] **310-161** 1-Port Keystone Surface Biscuit
- [15] **310-162** 2-Port Keystone Surface Biscuit

Colors Available **WH**



## Category-5E Couplers

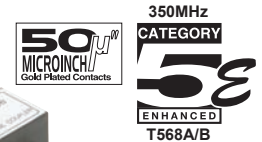
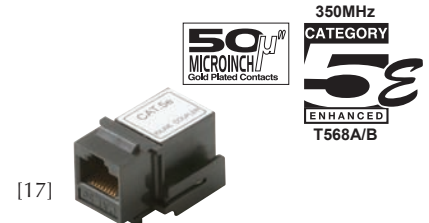
Category-5E Jack-Jack Couplers  
 Joins two RJ45 cords – Reverse Configuration

- [16] **310-039** CAT5e Inline Coupler

Colors Available **BK** **IV** **WH**

- [17] **310-042** CAT5e Keystone Coupler

Colors Available **BK** **WH**

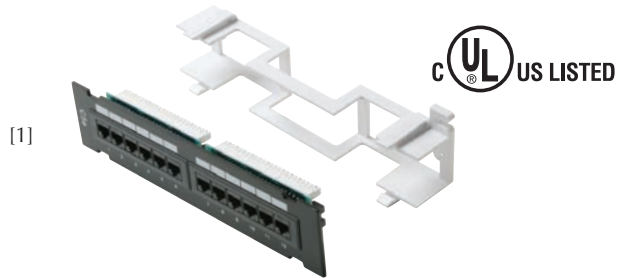


## Telephony & Twisted Pair Products

### CAT5E 110-IDC Patch Panels

Category-5E UL Verified and Listed Patch Panels  
 High-Reliability Printed-Circuit Board Design  
 110-Termination 22-26 AWG Tin-Lead Contact  
 UL94V-0 Black ABS Modular Jack Banks  
 Dual Color-Coded 568A/B Wiring Diagrams  
 Numeric-Stencilled Port ID Labels

- [1] **310-320** 12-Port 110-IDC CAT5E Patch Panel  
 1 x EIA Unit 9<sup>5</sup>/<sub>16</sub>"(W) x 2<sup>1</sup>/<sub>4</sub>"(H) x 1<sup>1</sup>/<sub>4</sub>"(D)  
 Supplied with Mounting Bracket
- [2] **310-324** 24-Port 110-IDC CAT5E Patch Panel  
 1 x EIA Unit 19"(W) x 1<sup>3</sup>/<sub>4</sub>"(H) x 1<sup>1</sup>/<sub>4</sub>"(D)
- [3] **310-348** 48-Port 110-IDC CAT5E Patch Panel  
 2 x EIA Units 19"(W) x 3<sup>1</sup>/<sub>2</sub>"(H) x 1<sup>1</sup>/<sub>4</sub>"(D)
- [4] **310-350** 50-Port 110-IDC CAT5E Patch Panel  
 High-Density Configuration  
 1 x EIA Unit 19"(W) x 1<sup>3</sup>/<sub>4</sub>"(H) x 6"(D)
- [5] **310-356** 96-Port 110-IDC CAT5E Patch Panel  
 4 x EIA Units 19"(W) x 7"(H) x 1<sup>1</sup>/<sub>4</sub>"(D)



### Fast Media™ CAT6 Patch Panels

Category-6 UL/cUL Verified and Listed  
 High-Reliability Printed Circuit Board Design  
 Rear Cable Management Strain Relief System  
 Assures proper cable routing and neatness  
 110-Termination 22-26 AWG Tin-Lead Contact  
 UL94V-0 Black ABS Modular Jack Banks  
 Dual Color-Coded 568A/B Wiring Diagrams  
 Numeric-Stencilled Port ID Labels

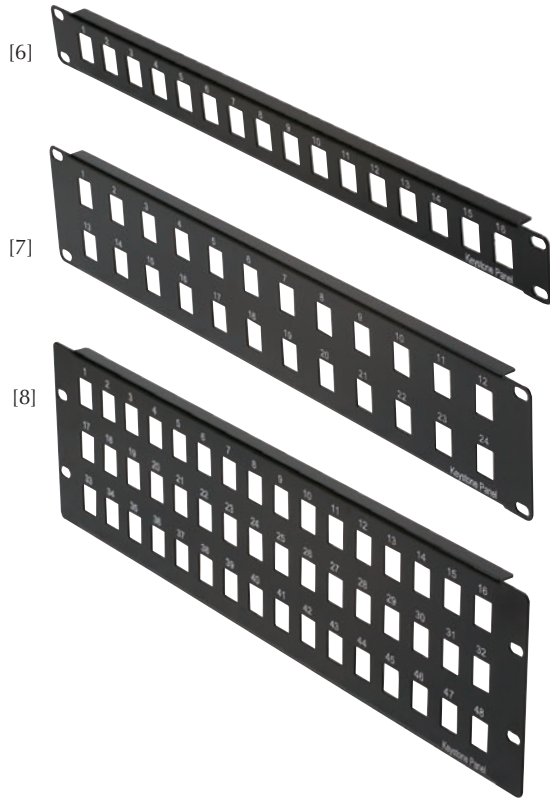
- [2] **310-334** 24-Port 110-IDC CAT6 Patch Panel  
 1 x EIA Unit 19"(W) x 1<sup>3</sup>/<sub>4</sub>"(H) x 1<sup>1</sup>/<sub>4</sub>"(D)
- [3] **310-349** 48-Port 110-IDC CAT6 Patch Panel  
 2 x EIA Units 19"(W) x 3<sup>1</sup>/<sub>2</sub>"(H) x 1<sup>1</sup>/<sub>4</sub>"(D)
- [5] **310-358** 96-Port 110-IDC CAT6 Patch Panel  
 4 x EIA Units 19"(W) x 7"(H) x 1<sup>1</sup>/<sub>4</sub>"(D)



# Telephony & Twisted Pair Products

## Snap-In Patch Panels

Unloaded Panels Suitable for Any Combination of Coaxial, Twisted-Pair or Fiber Connectors  
 Holds industry standard modular keystone inserts for custom installations  
 Numeric-Stencilled Port ID Labels  
 Use with Keystone series modules



- [6] **310-216** 16-Port 1-Row Snap-In Panel  
1 x EIA Unit 19"(W) x 1¾"(H)
- [7] **310-224** 24-Port 2-Row Snap-In Panel  
2 x EIA Units 19"(W) x 3½"(H)
- [8] **310-248** 48-Port 3-Row Snap-In Panel  
3 x EIA Units 19"(W) x 5¼"(H)

## Cable Management Panel

- [9] **310-399** 5-Ring Low-Profile Cable Manager  
Organizes front-rack patch cords for use on standard racks, wall brackets or cabinet installations  
Five 1½"x4" Horizontal Plastic Rings  
Some Assembly Required  
1 x EIA Unit 19"(W) x 1¾"(H)



## Hinged Wall-Mount Brackets

Convenient Alternative to Full Size Racks for Direct Wall-Mounting – 6" Depth  
 Hinges allow rear-access to mounted components  
 19" Standard Width – EIA Unit-Spacing Compliant  
 16-Gauge Black Electrostatic Powder-Coated Steel  
 Includes 10-32 rack screws



- [10] **310-601** 1 x EIA Unit Hinged Wall-Mount Bracket  
Dimensions 19"(W) x 1¾"(H) x 6"(D)
- [11] **310-602** 2 x EIA Unit Hinged Wall-Mount Bracket  
Dimensions 19"(W) x 3½"(H) x 6"(D)





# Telephony & Twisted Pair Products

## 50-Pair Wiring Blocks

50-Pair Modular 66-IDC and 110-IDC Wiring Blocks  
Used in equipment rooms and wiring closets to connect telephone systems, PBX systems and other low-speed terminal equipment  
Flame Retardant Thermoplastic Construction  
Quick-Connect 66-IDC and 110-IDC Terminals  
Terminates solid copper wire Category-3 24 AWG to Category-6 23 AWG

- [1] **310-366** 50-Pair Split 66-IDC Type Block  
2 1/8"(W) x 10"(H) x 1 1/8"(D)
- [2] **310-367** Mounting Bracket for 66 Block  
1 7/8"(W) x 10"(H) x 1 1/2"(D)
- [3] **310-368** 50-Pair 110-IDC Type Block  
1 3/4"(W) x 10 3/4"(H) x 1 1/4"(D)

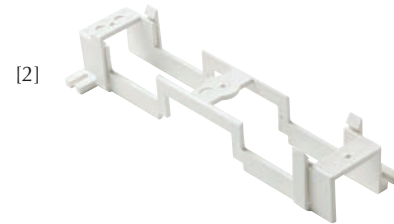


## Bridging Clip

- [4] **310-372** Bridging Clip for 66-IDC Wiring Blocks  
Nickel-Plated Brass Construction  
1/2"(W) x 1/3"(H)

## Distribution Spool

- [5] **310-381** Facilitates quick organizing and guiding of cables and wires  
Mounts on distribution frame backboard  
High-Impact ABS Plastic  
Includes mounting screw  
1 3/4"(Dia.) x 3"(H)



## Cable Distribution "D" Rings

Effective, Economical Method of Managing and Securing Wires and Cables  
Route and support cross-connects in distribution cabinets, closets and other areas  
Suitable for Use in Cable Terminals, Ceilings, Floors, Walls, Backboards and Other Surfaces  
Die-Cast Aluminum Construction  
Smooth, rounded edges prevent damage to insulation and jackets

- [6] **310-390** Small Cable Distribution "D" Ring  
4 7/8"(W) x 2 3/4"(D)  
Opening 1 7/8"(W) x 2 3/8"(D)
- [6] **310-392** Medium Cable Distribution "D" Ring  
6 1/8"(W) x 3 3/4"(D)  
Opening 3 1/8"(W) x 3 3/8"(D)
- [6] **310-394** Large Cable Distribution "D" Ring  
8 1/8"(W) x 6 1/8"(D)  
Opening 5 1/8"(W) x 4 7/8"(D)



# Telephony & Twisted Pair Products

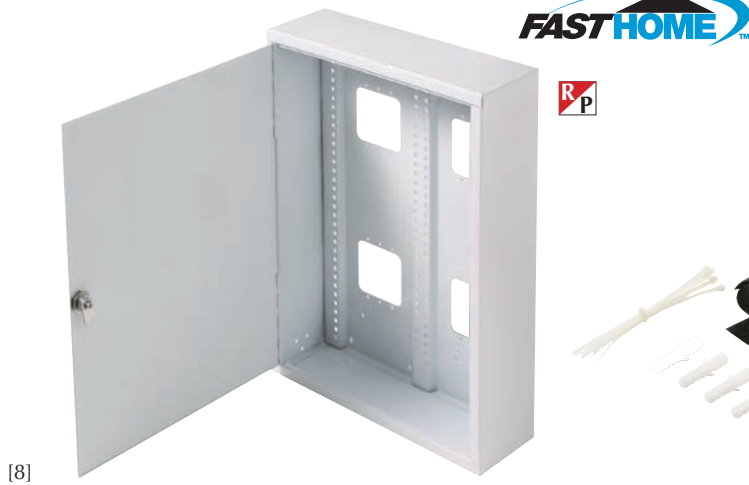
## FastHome™ Network Enclosures

Fully integrates, manages and distributes broadband and multimedia services  
 Provides a secure and reliable control center for video-voice-data connections  
 Customizable for Expansions and Upgrades  
 White Textured Powder-Coated Corrosion-Resistant Finish  
 Mounts between 16" center wall studs or on surface of a wall  
 Multiple Knockouts and Pre-Punched Holes for Fast and Easy Installations  
 Raised mounting rails create a clean wiring channel behind mounted modules  
 Captured Hinge Cover Design for Easy Access  
 Keyed Latch for Positive Closure and Security  
 Standard hole spacing allows flexibility for mounting FastHome™ or similar modules  
 FastHome™ modules snap into place without tools

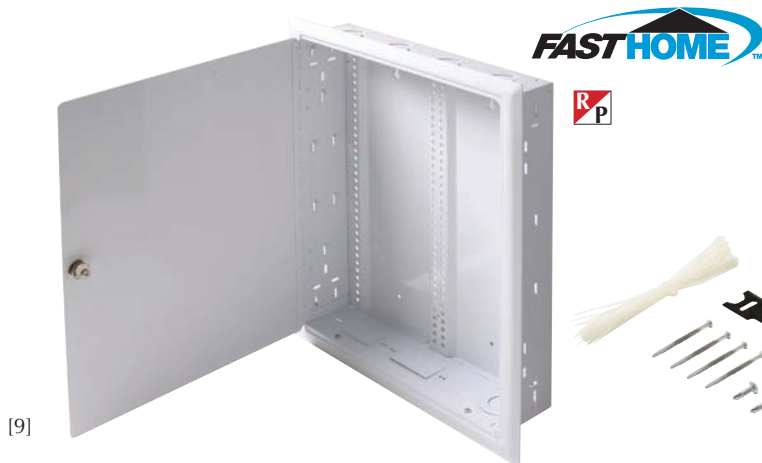


[7]

- [7] **550-100** 11" Surface Mount Enclosure  
7"(W) x 11"(H) x 3<sup>5</sup>/<sub>16</sub>"(D)
- [8] **550-105** 19" Surface Mount Enclosure  
14<sup>9</sup>/<sub>16</sub>"(W) x 19"(H) x 4<sup>5</sup>/<sub>16</sub>"(D)
- [9] **550-200** 19" In-Wall Mount Enclosure  
14<sup>3</sup>/<sub>8</sub>"(W) x 19"(H) x 3<sup>1</sup>/<sub>2</sub>"(D)
- [9] **550-205** 32" In-Wall Mount Enclosure  
14<sup>3</sup>/<sub>8</sub>"(W) x 32"(H) x 3<sup>1</sup>/<sub>2</sub>"(D)
- [9] **550-210** 44" In-Wall Mount Enclosure  
14<sup>3</sup>/<sub>8</sub>"(W) x 44"(H) x 3<sup>1</sup>/<sub>2</sub>"(D)



[8]



[9]

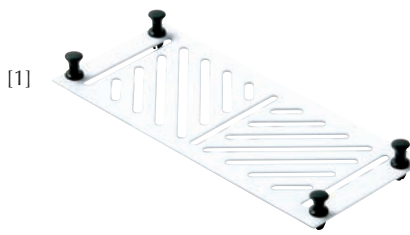


## Telephony & Twisted Pair Products

### FastHome™ Network Modules

Fully integrates, manages and distributes broadband and multimedia services  
 Provides secure, reliable connections for voice-video-data  
 Use in FastHome™ or similar enclosure  
 Expandable By Adding Multiple Modules  
 White Textured Powder-Coated Corrosion-Resistant Finish  
 Nylon pins snap modules into place without tools

- [1] **550-001** Universal Mount Plate  
 Creates new modules for mounting in FastHome™ or similar enclosures  
 Mounts splitters, multiswitches, couplers and other devices  
 6½" (W) x 2¾" (H)
- [2] **550-010** Telephone/TV Hub Module  
 Distributes 4 incoming phone, fax or modem lines to 6 rooms  
 Combines, distributes 2 incoming cable TV lines to 6 rooms  
 Allows insertion of camera feed from RF Modulator Module (550-080)  
 RJ31X Port for Security System Priority  
 Expandable CAT5E Phone Hub  
 LED Indicator for Power On  
 IDC contacts accept 22-26 AWG wire  
 Includes 9VDC 300mA power adapter  
 Input Frequency 5~900 MHz  
 Insertion Loss: 0.0dB±1dB  
 Return Loss: 10dB – Isolation: 20dB  
 6½" (W) x 4¾" (H) x 1" (D)
- [3] **550-020** Telephone Hub Module  
 Distributes 4 incoming phone, fax or modem lines to 6 rooms  
 Includes an RJ31X port for security system call priority  
 Expandable CAT5E Phone Hub  
 IDC contacts accept 22-26 AWG wire  
 Exceeds CAT5E Standard TIA/EIA-568-B.2  
 6½" (W) x 2¾" (H) x 1" (D)
- [4] **550-030** Data Hub Module  
 Centrally terminates data wires from 8 locations for distribution to switches, hubs or routers  
 IDC contacts accept 22-26 AWG wire  
 Exceeds CAT5E Standard TIA/EIA-568-B.2  
 6½" (W) x 2¾" (H) x 1" (D)
- [5] **550-040** TV Combiner/Splitter Module  
 Combines, distributes 2 incoming cable TV lines to 6 rooms  
 Allows insertion of camera feed from RF Modulator Module (550-080)  
 LED Indicator for Power On  
 Includes 9VDC 300mA power adapter  
 Input Frequency 5~900 MHz  
 Insertion Loss: 0.0dB±1dB  
 Return Loss: 10dB – Isolation: 20dB  
 6½" (W) x 2¾" (H) x 1" (D)



 Resale Packaged



# Telephony & Twisted Pair Products

## FastHome™ Network Modules

Fully integrates, manages and distributes broadband and multimedia services  
 Provides secure, reliable connections for voice-video-data  
 Use in FastHome™ or similar enclosure  
 Expandable By Adding Multiple Modules  
 White Textured Powder-Coated Corrosion-Resistant Finish  
 Nylon pins snap modules into place without tools



[6]



[6] **550-050** Audio Splitter Module  
 Distributes 2 incoming audio channels to 6 rooms  
 Suitable for Audio Systems and Intercoms Using Impedance-Matched Volume Controls  
 Gold-Plated Solid Brass Binding Posts  
 Secure Connections for Up to 14 AWG Wire  
 Accepts Wire and Banana Plugs  
 45° Angled Binding Post Holes for Easy Wire Insertion  
 Current 10mA – Voltage 1.1kVAC  
 6½”(W) x 2⅞”(H) x 1”(D)



[7]



[7] **550-060** Ethernet Switch Module  
 Creates Ethernet data network in home  
 Puts PC and peripheral connections in central location  
 LED Panel Indicators for Power On and High-Speed Access – Slide Switch Uplink  
 Auto-Negotiation on All Ports  
 Supports network IEEE 802.3/802.3u standards (10/100Mbps)  
 Includes 12VDC 500mA power adapter  
 6½”(W) x 2⅞”(H) x 1”(D)



[8]



[8] **550-070** AC Power Module  
 For Use in Surface-Mount Enclosures  
 Provides central 120VAC power for FastHome™ modules  
 Features UL Listed NEMA 5-15R Duplex Receptacle (125V, 15A, 2-Pole, 3-Wire)  
 Rear ½” Knockout Hole with Push-In NM-B Cable Connector  
 6½”(W) x 2⅞”(H) x 1”(D)



[9]



[9] **550-080** RF Modulator Module (NTSC)  
 Modulates video and audio signals for insertion into the home TV system  
 Allows addition of camera feed to all TVs for increased security  
 Output Channel Setup via DIP Switch  
 Includes 12VDC 500mA power adapter  
 Output Channels: Antenna 14-69, CATV 65-125, HRC 65-128  
 Video Carrier: 15±3dB  
 Video/Audio Amplitude Frequency Characteristics: ±3dB  
 Differential Phase and Gain: 10%  
 Video Input Impedance: 75Ω  
 Audio Carrier Frequency: 4.5±0.005MHz  
 Audio Distortion: 2% max  
 Audio S/N: 40dB min  
 6½”(W) x 3”(H) x 2⅞”(D)

Not for Satellite Use.



## Telephony & Twisted Pair Products

### Bulk Flat Modular Cable

Flat Modular Cable – PVC Jacket  
 Suitable for Telephony, VoIP Telephony Applications  
 Stranded Conductors

[1] **300-840** 1000' 4-Conductor – 28 AWG [A]

Colors Available **BK IV SL**

[1] **300-860** 1000' 6-Conductor – 28 AWG [B]

Colors Available **IV SL**

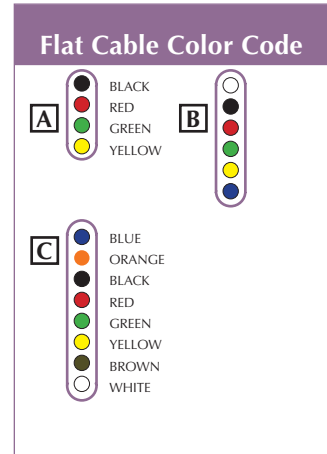
[1] **300-880** 1000' 8-Conductor – 28 AWG [C]

[1] **301-840** 1000' 4-Conductor UL – 26 AWG [A]

[1] **301-860** 1000' 6-Conductor UL – 26 AWG [B]

[1] **301-880** 1000' 8-Conductor UL – 26 AWG [C]

Colors Available **SL**



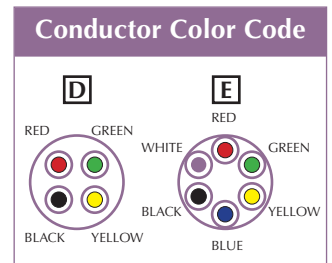
### Bulk Round Station Wire

Suitable for Remote Control, Signaling,  
 Security Systems, Communications,  
 Single-Line Telephone and Intercom/PA Systems  
 24 AWG Solid Conductors  
 4 or 6-Conductor – Non-Twisted Pair  
 Color-Coded, Unshielded – Beige PVC Jacket  
 1000' Lengths – Supplied in Spool or Pull Box

[2] **300-741** 1000' 4-Conductor – Spool [D]

[2] **300-743** 1000' 4-Conductor – Pull Box [D]

[2] **300-761** 1000' 6-Conductor – Spool [E]



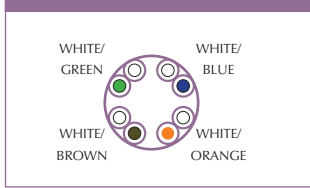
# Telephony & Twisted Pair Products

## UTP Category-3 Bulk Cable

2, 3 or 4-Pair Grey Category-3 Cable  
 Unshielded Twisted Pair (UTP) Voice Grade  
 Communications Cable  
 Suitable for Telephony and Security Systems  
 24 AWG Solid Copper Conductors  
 Flame Retardant PVC Jacket  
 Suitable for Indoor Installations  
 UL/cUL, CSA, ETL Listed – NEC Type CM  
 Supplied 1000' Pull Boxes



### Conductor Color Code



- [3] **300-745** 1000' 4-Pair CAT3 Cable
- [3] **300-746** 1000' 3-Pair CAT3 Cable
- [3] **300-747** 1000' 2-Pair CAT3 Cable

Colors Available **CY**



[3]



## Telephony & Twisted Pair Products

### UTP Category-5E Bulk Cable

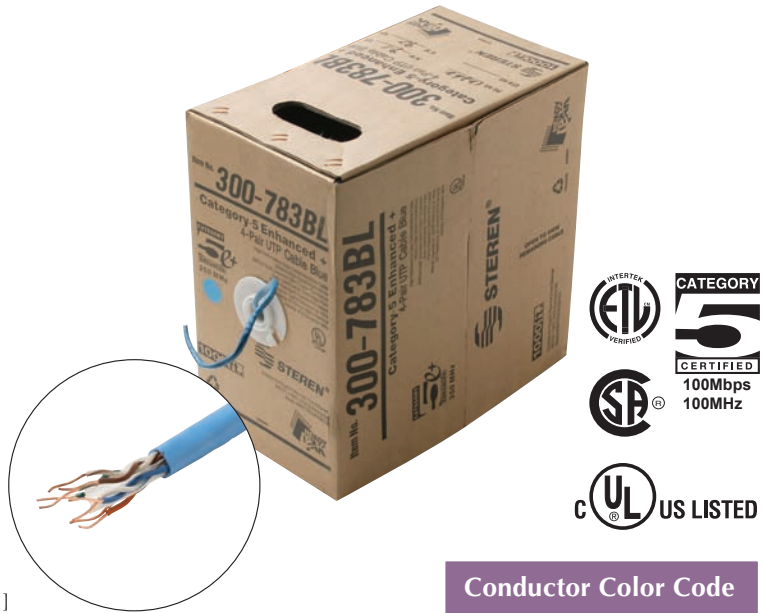
Category-5E Unshielded Twisted Pair (UTP)  
 High-Performance Communications Cable  
 Suitable for 350MHz High-Speed Data Applications  
 Suitable for Gigabit Ethernet, Fast Ethernet and  
 155Mbps TP-PMD/CDDI  
 4-Pair – Easily Identified Color-Striped Pairs  
 24 AWG Solid Annealed Bare Copper Conductors  
 Flame Retardant – Type CM  
 Suitable for Indoor Installations  
 Exceeds EIA/TIA 568, UL, CSA and ISO/IEC 11801  
 specifications – UL/cUL or ETL Listed

[1] **300-783** 1000' CAT5E Cable – Pull-Box

Colors Available **BL GR GY OR RD WH YL**

[1] **300-784** 1000' CAT5E Cable – Reel in Box

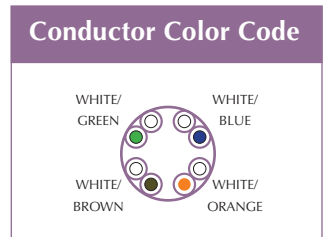
Colors Available **BL OR WH YL**



### Plenum UTP Category-5E Cable

[2] **300-793** Category-5E Unshielded Twisted Pair (UTP)  
 High-Performance Communications Cable  
 Suitable for 350 MHz High-Speed Data  
 Suitable for Gigabit Ethernet, Fast Ethernet,  
 155Mbps ATM, 100Mbps TP-PMD/CDDI  
 4-Pair – Easily Identified Color-Striped Pairs  
 24 AWG Solid Annealed Copper Conductors  
 Flame Retardant – Type CMP  
 Suitable for Indoor or Outdoor Installations  
 Exceeds ANSI/EIA/TIA 568-A-5, UL, CSA,  
 ISO/IEC 11801 specifications  
 UL/cUL, CSA, ETL Listed  
 Supplied in 1000' Pull Boxes

Colors Available **BL GY**



# Telephony & Twisted Pair Products

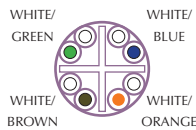
## Fast Media™ UTP Category-6 Cable

- [3] **300-786** Category-6 Unshielded Twisted Pair (UTP) Ultra-High-Performance Data Communications Cable Suitable for High-Speed Data, Critical Network Applications, Gigabit Ethernet, Fast Ethernet, Broadband Audio and Video, 155Mbps ATM, and 100Mbps TP-PMD/CDDI, NEXT, ELFEXT and RL Bandwidth Compliant 4-Pair – Easily Identified Color-Striped Pairs PE pair separator minimizes pair motion 23 AWG Solid Annealed Copper Conductors Flame Retardant – Type CM Suitable for Indoor Installations Exceeds CAT6 ANSI/TIA/EIA 568B.2-1 standards UL/cUL 1685, CSA, ETL Listed Supplied in 1000' Reel in Box



Colors Available **BL** **GY** **WH** **YL**

### Conductor Color Code



## Fast Media™ Plenum UTP Category-6 Cable

- [4] **300-796** Plenum-Rated Category-6 Unshielded Twisted Pair (UTP) Ultra-High-Performance Data Communications Cable Suitable for High-Speed Data, Critical Network Applications, Gigabit Ethernet, Fast Ethernet, Broadband Audio and Video, 155Mbps ATM, and 100Mbps TP-PMD/CDDI, NEXT, ELFEXT and RL Bandwidth Compliant 4-Pair – Easily Identified Color-Striped Pairs PE pair separator minimizes pair motion 23 AWG Solid Annealed Copper Conductors Flame Retardant Blue or Grey TFE Jacket Exceeds ANSI/TIA/EIA-568-B.2-1 standards UL/cUL 1685, CSA, ETL Listed NEC Type CMP Supplied in 1000' Reel in Box



Colors Available **BL** **GY**





## Telephony & Twisted Pair Products

### Structured Wiring Cables

Cable Solutions for Whole Home Voice-Video-Data  
 Carries multiple services in one easy-to-install bundle  
 Eliminates multiple cable pulls  
 Readies premises for future services  
 18 AWG RG6/U-Quad Coax  
 4-Pair 24 AWG CAT5E UTP Cable  
 16/4 or 18/2 Speaker/Power-Limited Circuit Cable  
 Flame Retardant PVC Jackets  
 UL Listed – NEC Type CM  
 Supplied in 500' or 1000' Spools

- [1] **300-669** 1000' 1xRG59 + 1xCAT5E 350MHz + 18/2 Speaker Cable, Bundled 0.512" (13mm) OD
- [2] **300-770** 500' 1xCAT5E 350MHz + 16/4 Speaker Cable, Siamese CAT5E 0.217" (5.5mm) OD, 16/4 Cable 0.295" (7.5mm) OD

Colors Available **PR**

- [3] **300-771** 500' 1xCAT5E 350MHz + 2xRG6/U Quad Shield, Triamese CAT5E 0.217" (5.50mm) OD, RG6/U-Quad 0.30" (7.62mm) OD

Colors Available **CY**

- [4] **300-772** 500' 1xCAT5E 350MHz + 1xRG6/U Quad Shield, Siamese CAT5E 0.217" (5.50mm) OD, RG6/U-Quad 0.30" (7.62mm) OD

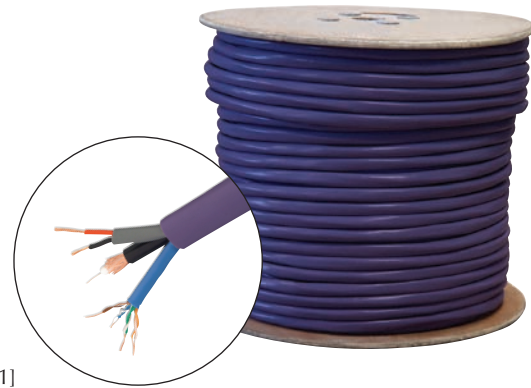
Colors Available **RD WH**

- [5] **300-773** 500' 2xCAT5E 350MHz + 1xRG6/U Quad Shield, Triamese CAT5E 0.217" (5.50mm) OD, RG6/U-Quad 0.30" (7.62mm) OD

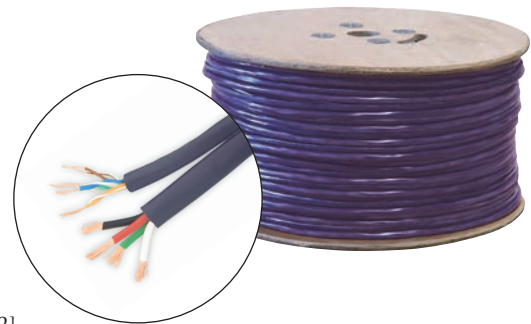
Colors Available **BL WH**

- [6] **300-774** 500' 2xCAT5E 350MHz + 2xRG6/U Quad Shield, Bundled 0.669" (17mm) OD

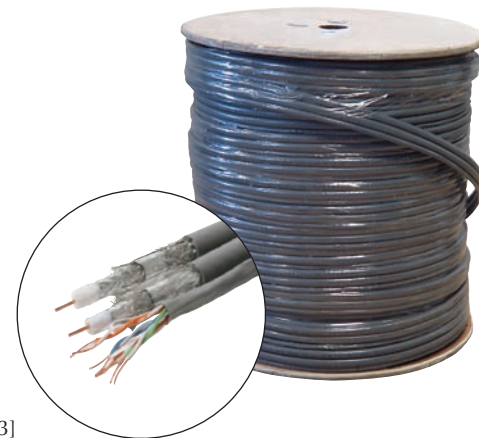
Colors Available **BL RD**



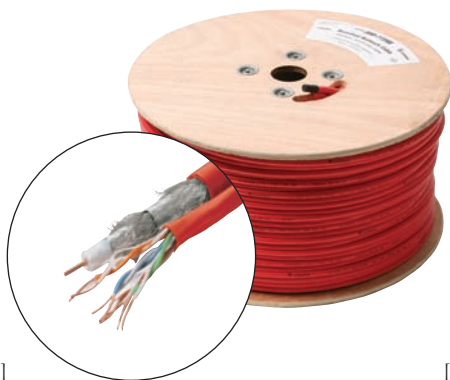
[1]



[2]



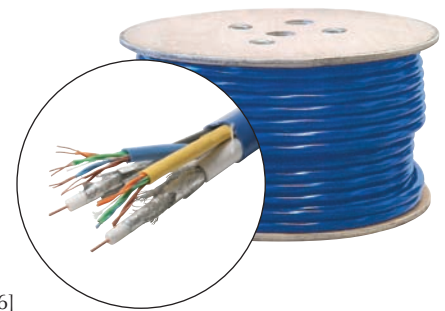
[3]



[4]



[5]



[6]



# Telephony & Twisted Pair Products

## Signal/Control Cable

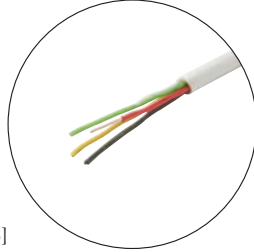
Excellent for Intercom Systems, Remote Control Units, Doorbells, Alarms and Other Power-Limited Applications Suitable for Residential and Commercial Use Standard color-coded conductor jackets keep track of cable functions  
 Flame Retardant PVC Jackets  
 22 AWG Copper Conductors  
 UL or ETL Listed, OSHA Acceptable, NEC Type CL2  
 Supplied in 1000' Pull Boxes

- [7] **300-732** 2-Conductor Signal/Control – Stranded
- [8] **300-734** 4-Conductor Signal/Control – Solid

Colors Available **WH**



[7]



[8]

## Thermostat Cable

Excellent for Thermostats, HVAC Controls, Heat Pumps, Intercom Systems, Remote Control Units, Doorbells, Alarms, Other Power-Limited Applications Suitable for Residential and Commercial Use Standard Color-Coded Conductor Jackets  
 Flame Retardant PVC Jackets  
 18 or 20 AWG Solid Copper Conductors  
 UL or ETL Listed, OSHA Acceptable, NEC Type CL2  
 Supplied in 250' or 500' Spools

- [9] **300-752** 18 AWG/2C, 500' Thermostat Cable
- [9] **300-753** 18 AWG/3C, 500' Thermostat Cable
- [9] **300-754** 18 AWG/4C, 500' Thermostat Cable

Colors Available **BR**

- [9] **300-755** 18 AWG/5C, 250' Thermostat Cable

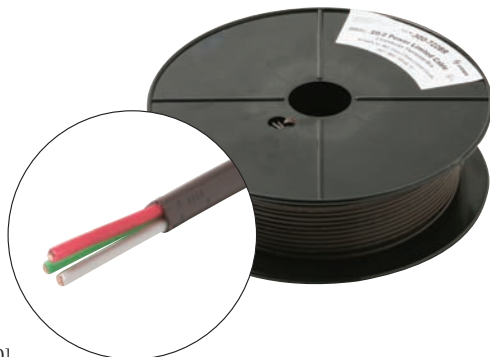
Colors Available **BR WH**

- [9] **300-756** 18 AWG/6C, 250' Thermostat Cable
- [9] **300-757** 18 AWG/7C, 250' Thermostat Cable
- [9] **300-758** 18 AWG/8C, 250' Thermostat Cable
- [10] **300-722** 20 AWG/2C, 500' Thermostat Cable
- [10] **300-724** 20 AWG/4C, 500' Thermostat Cable

Colors Available **BR**



[9]



[10]



# Telephony & Twisted Pair Products

## Modular Telephony Cords

Flat Modular Cable – PVC Jacket  
 Suitable for Telephony, VoIP Telephony Applications  
 Stranded Conductors  
 Cross-Wired for Telephone-Voice Applications

- [1] **304-001** 4-Wire 8' Patch Cord for  
 Wall-Mounted Phones – 28 AWG

Colors Available **IV**

- [2] **304-003** 4-Wire 3' Line Cord – 28 AWG

Colors Available **SL**

- [2] **304-007** 4-Wire 7' Line Cord – 28 AWG

- [2] **304-015** 4-Wire 15' Line Cord – 28 AWG

Colors Available **IV** **SL** **WH**

- [2] **304-025** 4-Wire 25' Line Cord – 28 AWG

- [2] **304-050** 4-Wire 50' Line Cord – 28 AWG

- [2] **304-100** 4-Wire 100' Line Cord – 28 AWG

Colors Available **BK** **IV** **SL** **WH**

- [2] **306-007** 6-Wire 7' Line Cord – 28 AWG

- [2] **306-015** 6-Wire 15' Line Cord – 28 AWG

- [2] **306-025** 6-Wire 25' Line Cord – 28 AWG

- [2] **308-007** 8-Wire 7' Line Cord – 28 AWG

- [2] **308-015** 8-Wire 15' Line Cord – 28 AWG

- [2] **308-025** 8-Wire 25' Line Cord – 28 AWG

- [2] **314-007** 4-Wire 7' Cord – UL – 26 AWG

- [2] **314-015** 4-Wire 15' Cord – UL – 26 AWG

- [2] **314-025** 4-Wire 25' Cord – UL – 26 AWG

Colors Available **SL**

## Modular Data Cables

Flat Modular Cable – PVC Jacket  
 28 AWG Stranded Conductors  
 Straight-Wired for Data Applications

- [3] **304-707** 4-Wire 7' Data Cable

Colors Available **SL** **WH**

- [4] **304-715** 4-Wire 15' Data Cable

- [4] **304-725** 4-Wire 25' Data Cable

- [4] **304-750** 4-Wire 50' Data Cable

- [4] **306-707** 6-Wire 7' Data Cable

- [4] **306-715** 6-Wire 15' Data Cable

- [4] **306-725** 6-Wire 25' Data Cable

- [4] **308-707** 8-Wire 7' Data Cable

- [4] **308-715** 8-Wire 15' Data Cable

- [4] **308-725** 8-Wire 25' Data Cable

Colors Available **SL**



[1]



[2]



[3]



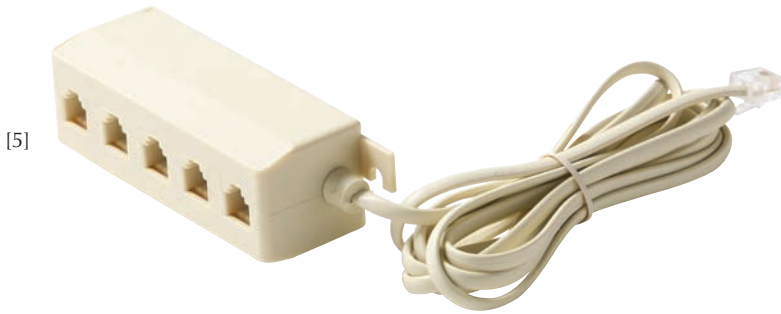
[4]



# Telephony & Twisted Pair Products

## Telephony Extensions

6x4 4-Wire 28 AWG Ivory Extensions Plug to Jack



[5]

- [5] **300-142** 15' 5-Outlet Extension Jct. Box
- [6] **304-225** 25' Modular Extension Cord
- [7] **304-226** 25' Duplex Jack Extension

## Telephony Distribution Block

- [8] **300-144** 4C 6x4 Distribution Block  
High-Impact ABS Plastic  
Gold-Plated Contacts

## Alarm Modular Cable

- [9] **308-802** 2' 8-Wire Round Spade Cord  
RJ45 Modular Plug to Spade Lugs

Colors Available **SL**



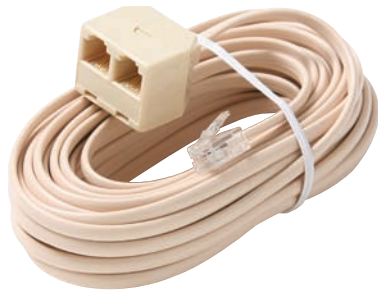
[6]

## Coiled Handset Cords

4x4 4-Wire 28 AWG Twisted Tinsel Conductors

- [10] **302-007** 7' Handset Cord
- [10] **302-015** 15' Handset Cord
- [10] **302-025** 25' Handset Cord

Colors Available **BK** **IV** **WH**



[7]



[9]



[8]



[10]



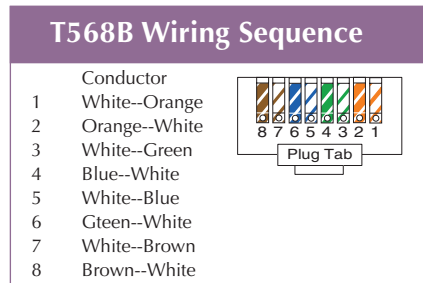
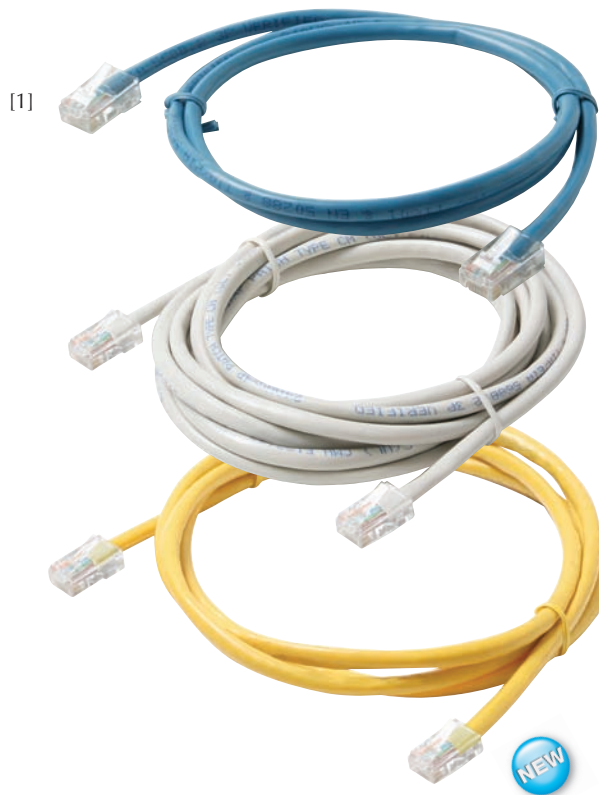
## Telephony & Twisted Pair Products

### Non-Booted CAT5E Patch Cords

Non-booted, flexible data cables connect hub to patch-panel or wall-outlet to workstation  
 Constructed of High-Performance CAT5E Cable  
 Suitable for High-Speed Data Applications, Including Gigabit Ethernet, Fast Ethernet and 155Mbps TP-PMD/CDDI  
 4-Pair 24 AWG-Stranded Copper UTP Cable  
 100% Tested Wiring Sequence and Continuity  
 Terminated to 8-Contact RJ45 Modular Plugs  
 Flame Retardant – Type CM  
 Suitable for Indoor Installations  
 Exceeds EIA/TIA 568B  
 UL/cUL or ETL Listed

- [1] **308-501** 1' CAT5E Non-Booted Cord
- [1] **308-503** 3' CAT5E Non-Booted Cord
- [1] **308-505** 5' CAT5E Non-Booted Cord
- [1] **308-507** 7' CAT5E Non-Booted Cord
- [1] **308-510** 10' CAT5E Non-Booted Cord
- [1] **308-514** 14' CAT5E Non-Booted Cord
- [1] **308-525** 25' CAT5E Non-Booted Cord
- [1] **308-550** 50' CAT5E Non-Booted Cord
- [1] **308-575** 75' CAT5E Non-Booted Cord
- [1] **308-500** 100' CAT5E Non-Booted Cord

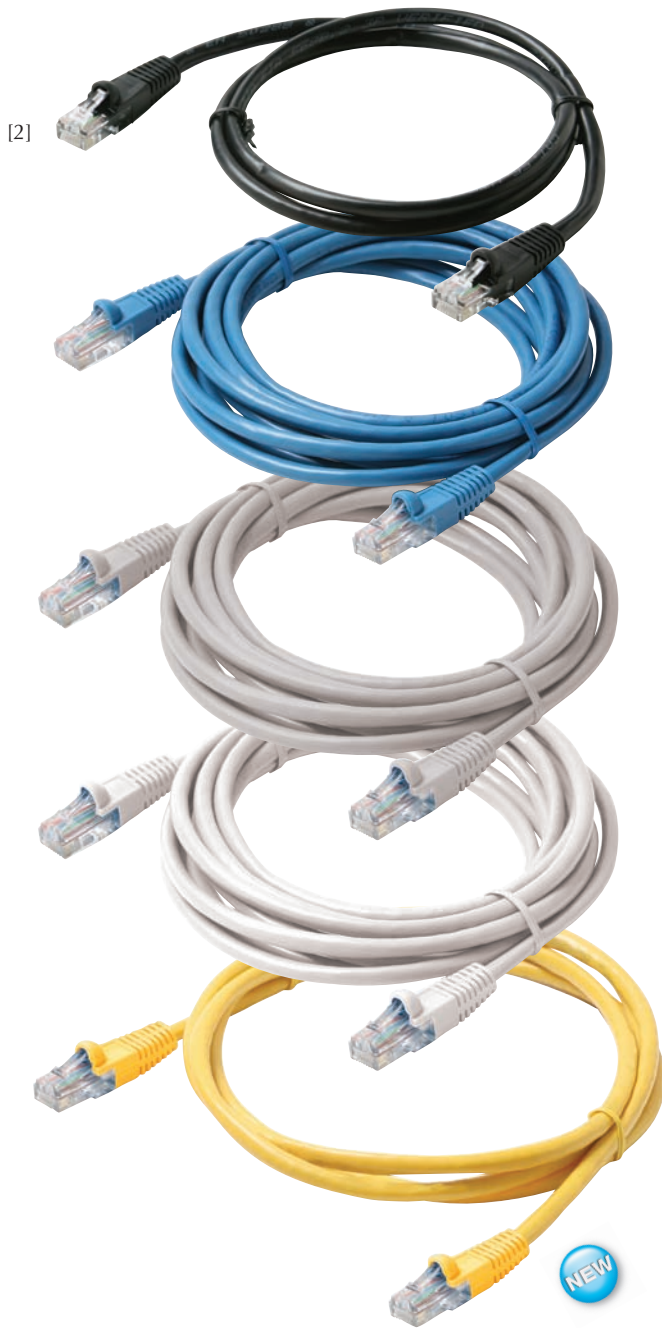
Colors Available **BL** **GY** **YL**



# Telephony & Twisted Pair Products

## Flush-Mold Booted CAT5E Cords

Flush-Mold-Injected Booted Snagless Category-5E Patch Cords  
 Flush molding enables many cords to plug side by side  
 Boots offer cable-end color ID, strain relief and RJ45 plug tab protection from snagging on cables or connectors when routing in ceilings and under floors  
 Constructed of High-Performance CAT5E Cable  
 Suitable for High-Speed Data Applications, Including Gigabit Ethernet, Fast Ethernet and 155Mbps TP-PMD/CDDI  
 4-Pair 24 AWG-Stranded Copper UTP Cable  
 100% Tested Wiring Sequence and Continuity  
 Terminated to 8-Contact RJ45 Modular Plugs  
 Flame Retardant – Type CM  
 Suitable for Indoor Installations  
 Exceeds EIA/TIA 568B  
 UL/cUL or ETL Listed



- [2] **308-601** 1' CAT5E Booted Cord
- [2] **308-603** 3' CAT5E Booted Cord
- [2] **308-605** 5' CAT5E Booted Cord
- [2] **308-607** 7' CAT5E Booted Cord
- [2] **308-610** 10' CAT5E Booted Cord
- [2] **308-614** 14' CAT5E Booted Cord
- [2] **308-625** 25' CAT5E Booted Cord
- [2] **308-650** 50' CAT5E Booted Cord
- [2] **308-675** 75' CAT5E Booted Cord
- [2] **308-600** 100' CAT5E Booted Cord

Colors Available **BK** **BL** **GY** **WH** **YL**



# Telephony & Twisted Pair Products

## Fast Media™ CAT6 Patch Cords

Fast Media™ CAT6 Booted Patch Cords  
 Ultra-High-Performance Data Communications Cable  
 Booted, snagless cords smoothly connect hubs,  
 patch panels, wall outlets and workstations  
 Boots offer cable-end color ID, strain relief and  
 RJ45 plug tab protection from snagging on cables or  
 connectors when routing in ceilings and under floors  
 Suitable for High-Speed Transmission  
 Critical Network Applications, Gigabit Ethernet,  
 Fast Ethernet, Broadband Audio and Video,  
 155Mbps ATM, 100Mbps TP-PMD/CDDI,  
 NEXT, ELFEXT and RL Bandwidth Compliant  
 4-Pair 23 AWG-Stranded Copper UTP Cable  
 100% Tested Wiring Sequence and Continuity  
 Terminated to 8-Contact RJ45 Modular Plugs  
 Blue or Grey PVC Jacket  
 Flame Retardant – Type CM  
 Suitable for Indoor Installations  
 Exceeds Category-6 ANSI/TIA/EIA 568B.2-1 standards  
 UL/cUL OR ETL Listed

[1]



[1] **308-903** 3' CAT6 Patch Cord

[1] **308-905** 5' CAT6 Patch Cord

Colors Available **BK** **BL** **GY** **WH** **YL**

[1] **308-907** 7' CAT6 Patch Cord

Colors Available **BL** **GY** **YL**

[1] **308-910** 10' CAT6 Patch Cord

Colors Available **BK** **BL** **GY** **WH** **YL**

[1] **308-914** 14' CAT6 Patch Cord

[1] **308-925** 25' CAT6 Patch Cord

Colors Available **BL** **GY**

[1] **308-950** 50' CAT6 Patch Cord

Colors Available **BL** **GY** **YL**

[1] **308-975** 75' CAT6 Patch Cord

Colors Available **BL** **GY**

[1] **308-900** 100' CAT6 Patch Cord

Colors Available **BL** **GY** **YL**



**FAST MEDIA™**



CATEGORY



T568B



# Telephony & Twisted Pair Products

## Modular-Plug Crimp Tools

Crimp Tools for Flat and Round-Stranded Modular Plugs  
Built-In Stripping or Cutting-Stripping Blades  
Plastic or Hardened Steel Construction  
Comfortable Grip Handles for Reduced Hand Fatigue



- [2] **300-504** Economy Tool for Handset, RJ11 Plugs  
Suitable for 4x4 and 6x4 Plugs  
Built-In Cutting-Stripping Blade  
Plastic Handles – Weight 3.2-oz.  
Dimensions 3 $\frac{3}{4}$ "(W) x 7 $\frac{3}{4}$ "(H) x  $\frac{5}{16}$ "(D)
- [3] **300-508** Economy Tool for Handset, RJ11, RJ45  
Suitable for 4x4, 6x4, 8x8 Plugs  
Built-In Stripping Blade  
Plastic Handles – Weight 6.4-oz.  
Dimensions 4 $\frac{1}{4}$ "(W) x 7 $\frac{1}{2}$ "(H) x 1"(D)
- [4] **300-552** Crimp Tool for Handset Plugs  
Suitable for 4x4 Plugs  
Hardened Steel – Black-Oxide Finish  
Built-In Cutting-Stripping Blades  
Blue Grip Handles – Weight 6.4-oz.  
Dimensions 2 $\frac{3}{4}$ "(W) x 7 $\frac{1}{2}$ "(H) x  $\frac{3}{4}$ "(D)
- [4] **300-555** Crimp Tool for RJ11 and RJ12 Plugs  
Suitable for 6x4 and 6x6 Plugs  
Hardened Steel – Black-Oxide Finish  
Built-In Cutting-Stripping Blades  
Blue Grip Handles – Weight 6.4-oz.  
Dimensions 2 $\frac{1}{2}$ "(W) x 7 $\frac{1}{2}$ "(H) x  $\frac{5}{16}$ "(D)
- [5] **300-556** Ratchet Crimp Tool for Handset, RJ11, RJ12  
Suitable for 4x4, 6x4, 6x6 Plugs  
Precise, Repeatable Terminations  
Hardened Steel – Black Oxide Finish  
Built-In Cutting-Stripping Blades  
Blue Grip Handles – Weight 19.2-oz.  
Dimensions 2 $\frac{3}{4}$ "(W) x 8 $\frac{1}{2}$ "(H) x 1"(D)
- [4] **300-558** Crimp Tool for RJ45 Plugs  
Suitable for 8x8 Plugs  
Hardened Steel – Black-Oxide Finish  
Built-In Cutting-Stripping Blades  
Black Grip Handles – Weight 9.6-oz.  
Dimensions 2 $\frac{1}{2}$ "(W) x 8"(H) x 1"(D)
- [6] **300-568** Crimp Tool for RJ11, RJ12 and RJ45  
Suitable for 6x4, 6x6 and 8x8 Plugs  
Hardened Steel – Black-Oxide Finish  
Built-In Cutting-Stripping Blades  
Blue Grip Handles – Weight 6.4-oz.  
Dimensions 3"(W) x 7 $\frac{1}{2}$ "(H) x 1"(D)
- [7] **300-570** Professional Tool for RJ11, RJ12, RJ45  
Suitable for 6x4, 6x6 and 8x8 Plugs  
Hardened Steel – Black-Oxide Finish  
Built-In Cutting-Stripping Blades  
Black Grip Handles – Weight 16-oz.  
Dimensions 3"(W) x 7 $\frac{1}{2}$ "(H) x 1"(D)
- [5] **300-574** Ratchet Crimp Tool for RJ11, RJ12, RJ45  
Suitable for 6x4, 6x6, 8x8 Plugs  
Precise, Repeatable Terminations  
Hardened Steel – Black Oxide Finish  
Built-In Cutting-Stripping Blades  
Blue Grip Handles – Weight 19.2-oz.  
Dimensions 2 $\frac{3}{4}$ "(W) x 8 $\frac{1}{2}$ "(H) x 1"(D)

## Connector Crimp Tool

- [8] **300-575** Telecom Connector Crimp Tool  
Crimps UY, UR, UG splice connectors  
Prevents overcrimping damage  
Hardened-Steel Construction  
Built-In Wire Cutter  
Comfortable Insulated Handles  
Dimensions 2 $\frac{5}{8}$ "(W) x 7"(H) x  $\frac{5}{8}$ "(D)





# Telephony & Twisted Pair Products

## Cable Preparation Tools

- [1] **993-610** 5" Miniature Adjustable Stripper/Cutter  
Suitable for 10-30 AWG Wire  
Hardened-Steel – Weight 2-oz.  
Dimensions 1½"(W) x 5"(H) x ⅜"(D)
- [2] **993-640** Precision Stripper and Cutter  
Suitable for 10-22 AWG Wire  
Hardened-Steel – Weight 5-oz.  
Dimensions 2"(W) x 6½"(H) x ⅜"(D)
- [2] **993-650** Precision Stripper and Cutter  
Suitable for 20-30 AWG Wire  
Hardened-Steel – Weight 5-oz.  
Dimensions 2"(W) x 6½"(H) x ⅜"(D)
- [3] **993-710** Universal Cable Slitter and Stripper  
Fully Adjustable Cut Depth  
Stainless Steel Cutting Blade  
Makes circumferential, longitudinal  
and spiral cuts – 12 AWG-1200MCM  
Hardened-Steel – Weight 6-oz.  
Dimensions 1½"(W) x 6"(H) x 1"(D)
- [4] **993-750** Telecom Cable Stripper and Cutter  
Cleanly strips UTP, coax, flat cables  
Cable Stops for Precise Strip Lengths  
Replaceable Blades  
High-Impact ABS Plastic Construction  
Hardened-Steel – Weight 2-oz.  
Dimensions 2"(W) x 4¼"(H) x ½"(D)



## Network Cable Tester

- [5] **300-100** 4-Pair-EIA/TIA568/Coaxial Cable Tester  
Tests local or installed cable with  
removable RJ45-BNC remote unit  
Provides instant diagnosis of  
4-pair twisted-pair and coax for  
continuity, opens, shorts, miswires,  
crossed, reversed, transposed and split-pairs  
Green LEDs indicate good connections  
Red or other colors indicate faults  
Includes 9V battery  
Display Boxed for Resale




## Cable Locator

- [6] **602-810** Cable Locator Tone-Test Set  
Amplifier Probe and Tone Generator  
Helps locate, identify, trace cable-pairs,  
individual conductors in electrical, CATV,  
data, telephone and security cabling  
Includes 9V batteries and nylon holster  
Display Packaged for Resale

*Inductive Amplifier Probe Features:*  
High-Sensitivity Detection Circuitry  
Built-In 2-inch Speaker  
Adjustable Volume Control for Added  
Sensitivity and Interference Reduction  
Recessed On-Off Switch

*Tone Generator Features:*  
Provides tip and ring identification,  
line condition and verification, and  
functions as continuity tester and  
3-Color LED polarity tester  
9V Peak-Peak Square-Wave Output  
Alternating HI-LO or Solid Tones  
Tone Frequency 700-1300Hz HI-LO  
Tone Frequency 1000Hz Solid Tone  
Output Impedance 2700Ω



 Resale Packaged

 **STEREN**<sup>®</sup>

# Telephony & Twisted Pair Products

## Punch-Down Tools



[7]



[8]



[9]



[10]

- [7] **300-650** Impact Punch-Down Tool  
Spring-Loaded Adjustable Impact  
Terminates and cuts conductors on  
110/88 or 66 blocks  
Spare Blade Storage Compartment  
Blades Supplied Separately
- [8] **300-653** Punch-Down Tool with Hook  
Spring-Loaded Adjustable Impact  
Terminates and cuts conductors on  
110/88 or 66 blocks  
Spare Blade Storage Compartment  
Clip-In Blades Supplied Separately
- [9] **300-657** Disposable Punch-Down Tool  
Inexpensive – Suitable for Small Jobs  
Terminates conductors on 110 blocks
- [10] **300-685** 5-Pair 110-Blade Punch-Down Tool  
Impact tool terminates wires on  
110 punch-down block  
5-pair head seats up to 10 wires with  
one motion  
Reversible blade allows cutting and  
terminating wires, or terminating only  
Heavy-Duty, Easy-Grip, No-Slip Handle

## Punch-Down Blades

- [11] **300-670** 66 Punch-Down Blade  
Reversible Punch or Punch-and-Cut  
Used with 300-650 and 300-655 Tools
- [12] **300-672** 66 Punch-Down Blade  
Reversible Punch or Punch-and-Cut  
Used with 300-653 and 300-658 Tools
- [13] **300-675** 110/88 Punch-Down Blade  
Reversible Punch or Punch-and-Cut  
Used with 300-650 and 300-655 Tools
- [14] **300-677** 110/88 Punch-Down Blade  
Reversible Punch or Punch-and-Cut  
Used with 300-653 and 300-658 Tools
- [15] **300-680** 66, 110/88 Punch-Down Blade  
Punch Only Type  
Used with 300-650 and 300-655 Tools



[11]



[12]



[13]



[14]



[15]

