

Datacom Connectivity Products

D-Sub Connectors • D-Sub Housings • D-Sub Modular Adapters • IDC Installation Tools • Keyboard Cables



D-Sub Connectors
E3



D-Sub Housings
E4



D-Sub Adapters
E5



D-Sub Modular Adapters
E5



D-Sub Installation Tools
E6



IDC Installation Tool
E6



USB Multi-Port Hub
E10

Datacom Connectivity Products

RS232 Serial Cables • DVI-D Digital Interface Cables • USB Serial Data Cables • IEEE 1394 Digital Cables



Mouse-Monitor Cables
E7



DVI-D Digital Interface Cables
E8



IEEE1394 Digital Cables
E8



USB v1.1 Serial Data Cables
E9



USB v2.0 Serial Data Cables
E9



USB Adapters
E10

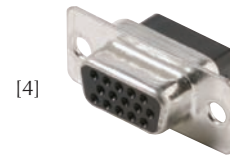
E QUICK - FIND
Guide to Product

Datacom Connectivity Products

D-Sub Connectors

RS232 D-Subminiature Connectors

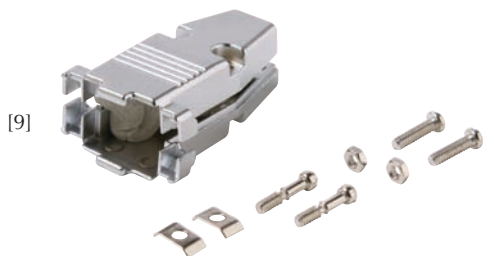
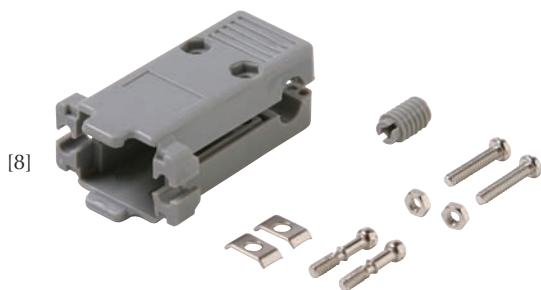
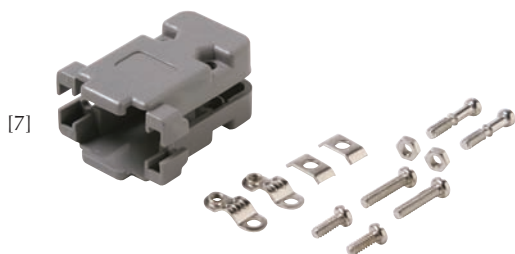
- [1] **500-009** DE9 9C Male Solder
- [2] **500-010** DE9 9C Male Crimp
- [1] **500-015** DA15 15C Male Solder
- [1] **500-020** DE15 15C High-Density Male Solder
- [2] **500-022** DE15 15C High-Density Male Crimp
- [1] **500-025** DB25 25C Male Solder
- [2] **500-027** DB25 25C Male Crimp
- [5] **500-055** Male Crimp Pins
- [5] **500-057** Male High-Density Crimp Pins
- [3] **500-109** DE9 9C Female Solder
- [4] **500-110** DE9 9C Female Crimp
- [3] **500-115** DA15 15C Female Solder
- [3] **500-120** DE15 15C High Density Female Solder
- [4] **500-122** DE15 15C High Density Female Crimp
- [3] **500-125** DB25 25C Female Solder
- [4] **500-127** DB25 25C Female Crimp
- [6] **500-155** Female Crimp Pins
- [6] **500-157** Female High-Density Crimp Pins



Datacom Connectivity Products

D-Sub Housings

RS232 D-Subminiature Connector Covers



- [7] **500-409** DE Grey Plastic Hood
Cable-Clamp Strain Relief
- [8] **500-410** DE Grey Plastic Hood
Side-Screw Strain Relief
- [7] **500-411** DE Metallized Plastic Hood
Cable-Clamp Strain Relief
- [8] **500-412** DE Metallized-Plastic Hood
Side-Screw Strain Relief
- [7] **500-415** DA Grey Plastic Hood
Cable-Clamp Strain Relief
- [7] **500-417** DA Metallized Plastic Hood
Cable-Clamp Strain Relief
- [7] **500-425** DB Grey Plastic Hood
Cable-Clamp Strain Relief
- [8] **500-426** DB Grey Plastic Hood
Side-Screw Strain Relief
- [7] **500-427** DB Metallized Plastic Hood
Cable-Clamp Strain Relief
- [8] **500-428** DB Metallized Plastic Hood
Side-Screw Strain Relief
- [9] **500-450** DE Die-Cast Metal Hood
- [9] **500-453** DA Die-Cast Metal Hood
- [9] **500-455** DB Die-Cast Metal Hood



Datacom Connectivity Products

D-Sub Adapters

- [1] **500-331** DE9 9C Mini-Coupler Male-Male
- [2] **500-336** DE9 9C Mini-Coupler Female-Female
- [1] **500-351** DB25 25C Mini-Coupler Male-Male
- [2] **500-356** DB25 25C Mini-Coupler Female-Female



[1]



[2]

D-Sub Modular Adapters

Grey Plastic Hood with Long Thumbscrews

- [3] **504-207** 9C Male to 6x6 Jack – Grey
- [3] **504-209** 9C Male to 8x8 Jack – Grey
- [4] **504-217** 9C Female to 6x6 Jack – Grey
- [4] **504-219** 9C Female to 8x8 Jack – Grey
- [5] **504-307** 25C Male to 6x6 Jack – Grey
- [5] **504-309** 25C Male to 8x8 Jack – Grey
- [6] **504-317** 25C Female to 6x6 Jack – Grey
- [6] **504-319** 25C Female to 8x8 Jack – Grey



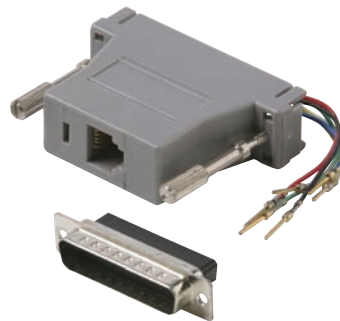
[3]



[4]



[5]



[6]



Datacom Connectivity Products

D-Sub Installation Tools

- [7] **500-200** D-Sub Pin-Insertion/Extraction Tool
- [8] **500-210** D-Sub Crimp Tool
Suitable for D-Sub Contacts and
22-28 AWG Butt-Connectors
Hardened Steel Construction
Cushion-Grip Handles



[7]

IDC Installation Tool

- [9] **500-220** 9½" IDC Crimp Tool
Suitable for IDC Socket, D-Sub and
Centronics Flat-Cable Connectors
Hardened Steel Construction
Cushion-Grip Handles



[8]



[9]



Datacom Connectivity Products

Mouse/Monitor Cables

Ash-Grey Jacket
Rugged Molded Construction
Long Grip-Textured Slotted Thumbscrews

- [1] **506-070** 6' VGA Monitor Cable
DE15HD Male to Male – 14-Wire
- [1] **506-074** 10' VGA Monitor Cable
DE15HD Male to Male – 14-Wire
- [2] **506-076** 6' VGA Monitor Cable
DE15HD Male to Female – 14-Wire
- [2] **506-078** 10' VGA Monitor Cable
DE15HD Male to Female – 14-Wire



Datacom Connectivity Products

Python™ DVI-D Digital Interface Cables

Python™ DVI-D Digital Visual Interface Cables
 Installs easily on any DVI-D socket found on
 data projectors, plasma displays, digital TVs and
 set-top boxes – Hot Swappable
 Single Link (1920 x 1080) – Dual Link (2048 x 1536)
 Super-Flexible Black PVC Jacket
 Fully Molded Construction
 Easy-Grip Captured Screws – UL Listed



- [3] **506-906** 6' Single Link DVI-D Cable – 18 pin
- [3] **506-910** 10' Single Link DVI-D Cable – 18 pin
- [3] **506-912** 12' Single Link DVI-D Cable – 18 pin
- [4] **506-956** 6' Dual Link DVI-D Cable – 24 pin
- [4] **506-960** 10' Dual Link DVI-D Cable – 24 pin
- [4] **506-962** 12' Dual Link DVI-D Cable – 24 pin

IEEE1394 Digital Cables

Premium-Grade IEEE1394 FireWire® Cables
 Supports 393Mbps data transfer – Hot Swappable
 Suitable for Connections to High-Speed Modems,
 Digital and Web Cameras, Digital Camcorders, and Scanners
 UL Listed



- [5] **506-606** 6' 4-4-Pin IEEE1394 Digital Cable
- [6] **506-706** 6' 4-6-Pin IEEE1394 Digital Cable
- [7] **506-806** 6' 6-6-Pin IEEE1394 Digital Cable



Datacom Connectivity Products

USB v1.1 Serial Data Cables

USB v1.1 Compliant Data Cables
 Supports 1.5 or 12Mbps transfer – Hot-Swappable
 Suitable for Connections to Modems, Printers, Keyboard, Mice, Digital Cameras and External Drives
 Flexible Ash-Grey PVC Jacket – Molded Construction
 USB Type A Male to Type A or B Male Connectors
 UL Listed

- [1] **506-303** 3' A to A USB Cable
- [1] **506-306** 6' A to A USB Cable
- [1] **506-310** 10' A to A USB Cable
- [1] **506-315** 15' A to A USB Cable
- [2] **506-403** 3' A to B USB Cable
- [2] **506-406** 6' A to B USB Cable
- [2] **506-410** 10' A to B USB Cable
- [2] **506-415** 15' A to B USB Cable



USB v2.0 Serial Data Cables

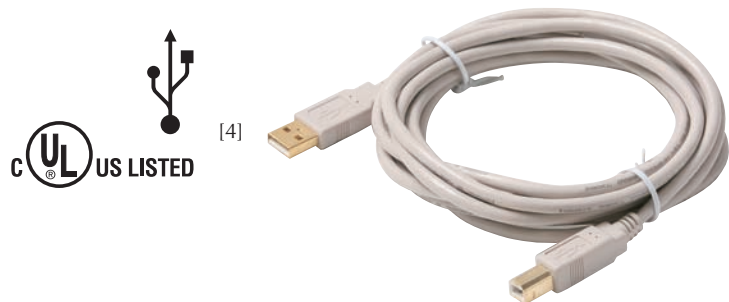
Premium High-Speed USB v2.0 Certified Cables
 Supports 1.5/12/480 Mbps transfer – Hot-Swappable
 Suitable for Connections to Modems, Printers, Keyboard, Mice, Digital Cameras, Web Cameras, External Drives, Scanners and PDA Docking Stations
 Backward-Compatible with USBv1.1 Devices
 Flexible PVC Jacket – Molded Construction
 USB Type A Male to Type A or B Male Connectors
 UL Listed

- [3] **506-353** 3' A-A USB v2.0 Cable – Gold
- [3] **506-356** 6' A-A USB v2.0 Cable – Gold
- [3] **506-360** 10' A-A USB v2.0 Cable – Gold
- [3] **506-365** 15' A-A USB v2.0 Cable – Gold
- [4] **506-453** 3' A-B USB v2.0 Cable – Gold
- [4] **506-456** 6' A-B USB v2.0 Cable – Gold
- [4] **506-460** 10' A-B USB v2.0 Cable – Gold
- [4] **506-465** 15' A-B USB v2.0 Cable – Gold

Colors Available **GY**

- [5] **506-513** 3' USB-A to Mini B v2.0 Cable – Nickel
- [5] **506-516** 6' USB-A to Mini B v2.0 Cable – Nickel

Colors Available **BK**



Datacom Connectivity Products

USB Adapters

Universal Serial Bus (USB) Adapters
Compatible with USB v1.1, v1.2, v2.0

- [6] **506-530** A Male – A Male USB Adapter
- [7] **506-532** A Female – A Female USB Adapter
- [8] **506-534** B Male – B Male USB Adapter
- [9] **506-536** A Male – B Female USB Adapter
- [10] **506-538** A Female – B Female USB Adapter



USB Multiport Hub

- [11] **506-520** 4-Port v2.0 480Mbps USB Multiport Hub
Supplies plug-and-play USB connections
Input USB-B and 4 Output USB-A Ports
Windows and Mac OS Compatible
Power Supply and 5' Cable Included

