



**Portable**

**Durable**

**Safe**

# PORTABLE GUARDRAIL SYSTEM

## Eliminates the Fall Hazard

This system acts as a barrier preventing personnel from falling to lower levels, thus eliminating the fall hazard. This system can protect employees with little or no training, special maintenance or gear.

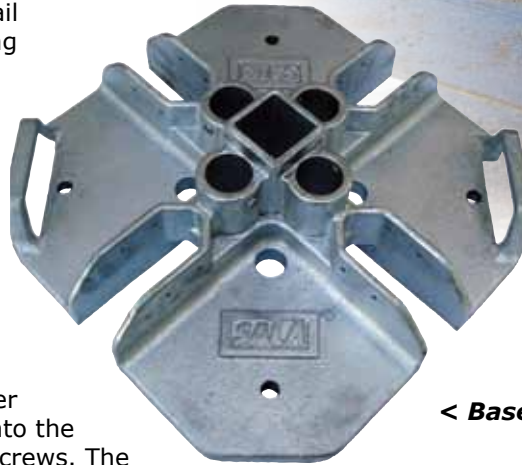
## Versatility and Jobsite Flexibility

Whether you are setting up the guardrail around the perimeter of a roof or closing off a wall opening, the unlimited configurations offered by the system will easily accommodate your needs. Ideal for use with floor hatchways or chutes, leading edges, skylites, truck or rail docks, floor or wall openings, pits, shafts, manholes and more, the system readily adapts to all applications.

## Ease-of-Installation

Once the bases are located in the proper position, insert the guardrail sections into the base plate's fitting and torque the set screws. The set screw design offers added stability and no "wobble." Installation is quick and easy with no special tools required.

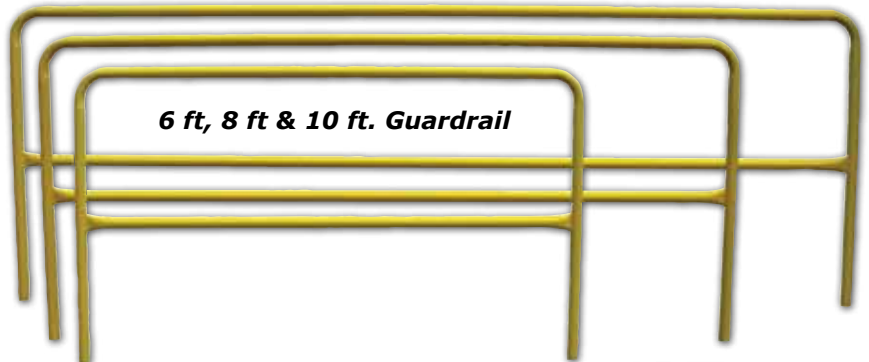
- Free-standing system does not require engineered anchor points or surface penetration.
- Built-in rail and toe board receptacles allow for infinite configurations.
- Rubber pad provides skid resistance and protects the roof surface.
- Ergonomic handles allow for easy transportation and set-up.
- Fast and easy set-screw installation, insert rail and tighten.
- Galvanized base and powder coated rails prevent corrosion for extended product life.



< Base



Gate



6 ft, 8 ft & 10 ft. Guardrail

## Portable Guardrail Models:

- 7900060:** Guardrail Base, Galvanized
- 7900061:** 6 ft. (1.8 m) Rail, Powder Coated
- 7900062:** 8 ft. (2.4 m) Rail, Powder Coated
- 7900063:** 10 ft. (3.0 m) Rail Powder Coated
- 7900007:** Guardrail Gate, Powder Coated
- 7900005:** Guardrail Splice Kit, Powder Coated
- 7900008:** Guardrail Roof Hatch Kit, Includes; (4ea) 7900060 Guardrail Bases, (1ea) 7900007 Guardrail Gate, (3ea) 7900005 Guardrail Splice Kits, (3ea) 7900061 6 ft. (1.8m) Rails
- 7900054:** Guardrail Base Transport Cart



Splice Kit

## Specifications:

**Base: Material:** Galvanized Steel **Dimensions:** 18" (45.7 cm) x 18" (45.7 cm) **Rail: Material:** 1-5/8" (4.1 cm) round pipe **Finish:** Powder coat yellow Galvanized and custom colors available upon request **Weight:** Base = 80 lbs (36 kg), 6 ft. Rail (1.8 m) = 18.1 lbs (8.2 kg), 8 ft. Rail (2.4 m) = 22.1 lbs (10.0 kg), 10 ft. Rail (3.0 m) = 28.3 lbs (12.8 kg) **Standards:** Meets OSHA 1926.500/502

## Capital Safety

USA: 800.328.6146 • Canada: 800.387.7484 • Latin America: +1 651.385.4301 • Asia: +65 6558 7758 • Australia: 1800 245 002  
 New Zealand: 0800 212 505 • Europe, Middle East, Africa: +33 (0)4 97 10 00 10 • Northern Europe: +44 (0) 1928 571324  
 Germany: +49 2634 8052 [www.capitalsafety.com](http://www.capitalsafety.com) • [info@capitalsafety.com](mailto:info@capitalsafety.com)