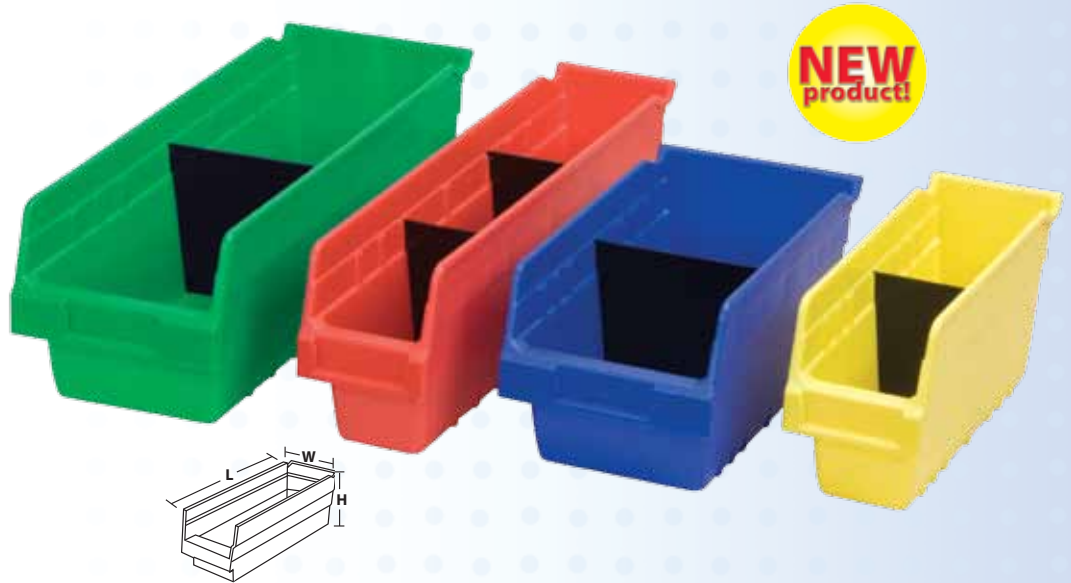


ShelfMax™ Bins

- Go deep! Expand your storage capacity up to 85% over traditional 4" bins
- Front opening is .75" higher than comparable products
- Superior, durable construction compared to corrugated bins
- Four sizes and five color options: Red, Blue, Yellow, Green and White
- Width dividers keep items neatly separated
- ShelfMax bins can be used alone, or with Akro-Mils' open or closed steel shelving, wire shelving, bench racks or pick racks
- Rolled ridge for added strength when filled to maximum capacity



Large handle makes bin easy to carry



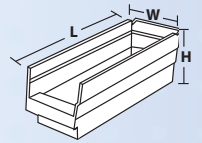
Large label area on front of bin

ShelfMax

Model No.	Outside Dimensions						Bottom Dimensions						Storage Capacity Cubic Inches	Optional Dividers
	Inches			mm			Inches			mm				
	L	W	H	L	W	H	L	W	H	L	W	H		
30040	11 1/8	4 1/8	6	295	105	152	9 3/4	2 1/2	5 1/16	248	64	150	109	40020
30048	17 7/8	4 1/8	6	454	105	152	16	2 1/2	5 1/16	406	64	150	177	40020
30090	11 1/8	6 5/8	6	295	169	152	9 3/4	5	5 1/16	248	127	150	201	40030
30098	17 7/8	6 5/8	6	454	169	152	16	5	5 1/16	406	127	150	325	40030

Shelf Bins

- Keep supplies neat and organized
- Easy to label and color code for quick identification
- Works with 12", 18" and 24" deep shelving
- Durable, one-piece construction
- Create cleaner work areas — eliminate cardboard with reusable, eco-friendly bins
- Bins nest when empty for space savings
- 13 convenient sizes and 5 colors (see chart)



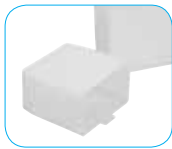
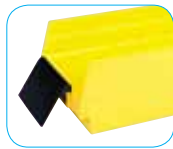
Shelf Bins

Model No.	Outside Dimensions						Bottom Dimensions						Cups Per Bin			Optional Divider*
	Inches			mm			Inches			mm			Ctn. Qty.	Small 30101	Large 30102	
	L	W	H	L	W	H	L	W	H	L	W	H				
12" Shelf Bins																
30110	11 1/8	2 3/4	4	295	70	102	10 1/4	1 5/8	4	260	41	102	24	3	-	-
30120	11 1/8	4 1/8	4	295	105	102	10 1/4	3	4	260	76	102	24	5	2	40120
30130	11 1/8	6 5/8	4	295	168	102	10 1/4	5 1/2	4	260	140	102	12	9	4	40130
30150	11 1/8	8 3/8	4	295	219	102	10 1/4	7 1/8	4	260	181	102	12	11	4	40150
30170	11 1/8	11 1/8	4	295	283	102	10 1/4	10	4	260	254	102	12	15	6	40170
18" Shelf Bin																
30128	17 7/8	4 1/8	4	454	105	102	16 1/2	3	4	419	76	102	12	8	3	40120
30138	17 7/8	6 5/8	4	454	168	102	16 1/2	5 1/2	4	419	140	102	12	15	6	40130
30158	17 7/8	8 3/8	4	454	213	102	16 1/2	7 1/8	4	419	181	102	12	15	6	40150
30178	17 7/8	11 1/8	4	454	283	102	16 1/2	10	4	419	254	102	12	25	12	40170
24" Shelf Bin																
30124	23 3/8	4 1/8	4	600	105	102	22 1/2	3	4	562	76	102	12	11	4	40120
30164	23 3/8	6 5/8	4	600	168	102	22 1/2	5 1/2	4	562	140	102	6	21	8	40130
30184	23 3/8	8 3/8	4	600	213	102	22 1/2	7 1/8	4	562	181	102	6	25	8	40150
30174	23 3/8	11 1/8	4	600	283	102	22 1/2	10	4	562	254	102	6	35	16	40170

One color per carton. Specify color: Red, Yellow, Blue, Green or White. Order in carton quantities.
*24 dividers per package

Extended Label Holders

Model No.	Description	W	H	Pkg. Qty.
40410	10° Angle	4"	2 1/4"	24
40445	45° Angle	4"	2 1/4"	24



Accessories:
Extended label holders for larger bar codes; **Bin cups** lift out for easy access; **Dividers** create additional compartments

