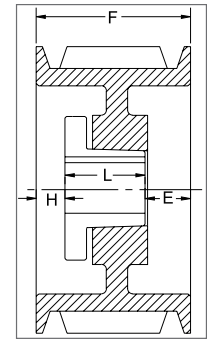


3V SECTION

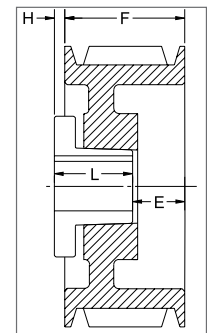
5 GROOVES

Dimensions

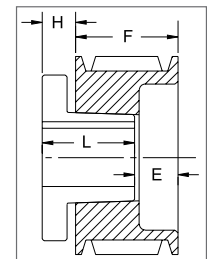
O.D.	Datum dia.	Part No.	List Price	Mult. Sym.	F = 2 5/16 inches					
					H	Type	B	L	E	Approx. Wt. (lbs)
4.75	4.70	5-3V4.75	62.00	QDS08	1/8	1B	SDS	1 5/16	7/8	4.7
5.00	4.95	5-3V5.00	68.00	QDS08	1/8	1B	SDS	1 5/16	7/8	6.0
5.30	5.25	5-3V5.30	70.00	QDS08	1/16	1B	SK	1 7/8	3/8	6.2
5.60	5.55	5-3V5.60	76.00	QDS08	1/32	1B	SK	1 7/8	13/32	7.4
6.00	5.95	5-3V6.00	78.00	QDS08	1/16	1B	SK	1 7/8	3/8	8.8
6.50	6.45	5-3V6.50	80.00	QDS08	1/16	1B	SK	1 7/8	3/8	9.9
6.90	6.85	5-3V6.90	88.00	QDS08	1/32	1B	SK	1 7/8	13/32	11.5
8.00	7.95	5-3V8.00	94.00	QDS08	1/16	1W	SK	1 7/8	3/8	14.5
10.60	10.55	5-3V10.60	130.00	QDS08	5/32	1A	SK	1 7/8	9/32	19.3
14.00	13.95	5-3V14.00	232.00	QDS08	3/32	6A	SF	2	13/32	26.5
19.00	18.95	5-3V19.00	292.00	QDS08	3/32	1A	SF	2	7/32	33.9
25.00	24.95	5-3V25.00	436.00	QDS08	7/16	6A	E	2 5/8	1/8	60.7
33.50	33.45	5-3V33.50	850.00	QDS09	3/8	6A	E	2 5/8	1/16	107.0



TYPE 1



TYPE 6



TYPE 11

6 GROOVES

Dimensions

O.D.	Datum dia.	Part No.	List Price	Mult. Sym.	F = 2 23/32 inches					
					H	Type	B	L	E	Approx. Wt. (lbs)
4.75	4.70	6-3V4.75^{1*}	84.00	QDS09	13/16	11B	SK	1 7/8	1 21/32	5.8
5.00	4.95	6-3V5.00¹	86.00	QDS09	13/16	11B	SK	1 7/8	1 21/32	7.1
5.30	5.25	6-3V5.30	88.00	QDS09	15/32	1B	SK	1 7/8	3/8	6.8
5.60	5.55	6-3V5.60	90.00	QDS09	7/16	1B	SK	1 7/8	13/32	8.2
6.00	5.95	6-3V6.00	92.00	QDS09	7/16	1B	SK	1 7/8	13/32	9.7
6.50	6.45	6-3V6.50	94.00	QDS09	1/16	1B	SK	1 7/8	25/32	10.8
6.90	6.85	6-3V6.90	112.00	QDS09	7/16	1B	SK	1 7/8	13/32	12.2
8.00	7.95	6-3V8.00	124.00	QDS09	1/16	1W	SK	1 7/8	25/32	16.0
10.60	10.55	6-3V10.60	144.00	QDS09	5/32	1A	SF	2	9/16	18.7
14.00	13.95	6-3V14.00	248.00	QDS09	3/32	1A	SF	2	5/8	30.5
19.00	18.95	6-3V19.00	308.00	QDS09	1/32	6A	E	2 5/8	1/8	47.6
25.00	24.95	6-3V25.00	452.00	QDS09	1/32	6A	E	2 5/8	1/8	66.9
33.50	33.45	6-3V33.50	900.00	QDS09	1/32	1A	E	2 5/8	1/16	121.6

P.D. for "3V" Belts = O.D.

¹ Reverse mount only.

* Mounting bolts are supplied by Baldor with these parts.

Type of sheave "T": A = arms; B = block; W = web