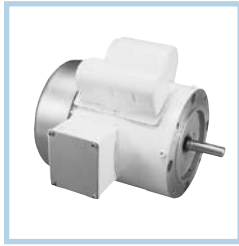


PowerWash™ XT Washdown Duty, Single Phase

White Epoxy, Totally Enclosed



Features:

- Encapsulated electronic starting switch is impervious to moisture
- Capacitor start induction run design for high starting torque unless otherwise noted
- Class F insulation
- 1.15 Service Factor
- Double sealed ball bearings
- 303 Stainless steel shaft with spring loaded contact seals in each endshield
- Stainless steel conduit box cover, nameplate, fan guard (TEFC) and hardware
- Cast oversized conduit box with high temperature Nitrile gaskets and threaded entrance
- Plugged drain holes in each endshield for all angle mounting
- Internal corrosion resistant coatings on frame, base, endshields, rotor and stator
- USDA-approved, white epoxy RUST-OLEUM® paint
- UL Recognized, CSA Certified and CE Mark

C-Face Footless

HP	RPM	VOLTS	FRAME	CAT NO.	MODEL NO.	STOCK	LIST PRICE	MULT. SYMB.	F.L. AMPS	"C" DIM.	FOOT NOTES
1/3	1800	115/208-230	56C	N531	56C17W5326	★	\$424	F3	6.4/3.2-3.2	10.69	
1/2	3600	115/208-230	56C	N532	56C34W5302	★	\$424	F3	7.6/4.0-3.8	10.69	
	1800	115/208-230	56C	N523	56C17W5327	★	\$435	F3	8.8/4.4-4.4	11.19	
3/4	3600	115/208-230	56C	N524	56C34W5303		\$427	F3	10.0/5.2-5.0	11.69	
	1800	115/208-230	56C	N525	56C17W5328	★	\$503	F3	10.8/5.4-5.4	11.69	
1	3600	115/208-230	56C	N526	56C34W5304		\$429	F3	12.0/6.2-6.0	12.19	
	1800	115/208-230	56C	N527	56C17W5329	★	\$570	F3	12.8/6.4-6.4	12.19	
1 1/2	3600	115/208-230	56C	N528	56C34W5305		\$633	F3	17.0/8.5-8.5	12.69	
	1800	115/208-230	56C	N529	56C17W5330	★	\$730	F3	19.0/9.5-9.5	13.69	

C-Face Footed (Rigid Base)

HP	RPM	VOLTS	FRAME	CAT NO.	MODEL NO.	STOCK	LIST PRICE	MULT. SYMB.	F.L. AMPS	"C" DIM.	FOOT NOTES
1/3	1800	115/208-230	56C	N557	56C17W5331	★	\$427	F3	6.4/3.2-3.2	10.69	
1/2	3600	115/208-230	56C	N558	56C34W5307	★	\$427	F3	7.6/4.0-3.8	10.69	
	1800	115/208-230	56C	C1285	5KC46JN0722	★	\$441	F3	8.8/4.6-4.4	11.19	d,19
	1800	115/208-230	56C	N559	56C17W5332	★	\$441	F3	8.8/4.4-4.4	11.19	
3/4	3600	115/208-230	56C	N540	56C34W5308	★	\$431	F3	10.0/5.2-5.0	11.69	
	1800	115/208-230	56C	C1286	5KC47NN0723	★	\$500	F3	10.8/5.6-5.4	12.19	d,19
	1800	115/208-230	56C	N541	56C17W5333	★	\$500	F3	10.8/5.4-5.4	11.69	
1	3600	115/208-230	56C	C1287	5KC49NN2514	★	\$433	F3	12/6.2-6.0	12.19	d,19
	3600	115/208-230	56C	N542	56C34W5309	★	\$433	F3	12.0/6.2-6.0	12.19	
	1800	115/208-230	56C	C1288	5KC49QN0724	★	\$575	F3	12.8/6.6-6.4	12.69	d
	1800	115/208-230	56C	N543	56C17W5334	★	\$575	F3	12.8/6.4-6.4	12.19	
1 1/2	3600	115/208-230	56C	C1289	5KC49RN2513	★	\$634	F3	17/8.8-8.5	12.69	d
	3600	115/208-230	56C	N544	56C34W5310	★	\$634	F3	17.0/8.5-8.5	12.69	
	1800	115/208-230	56C	C1290	5KCR48QN0725	★	\$734	F3	17.2/8.8-8.6	13.69	d,1
	1800	115/208-230	56HC	N545	56C17W5335	★	\$734	F3	19.0/9.5-9.5	13.69	d,5

WASHDOWN DUTY