



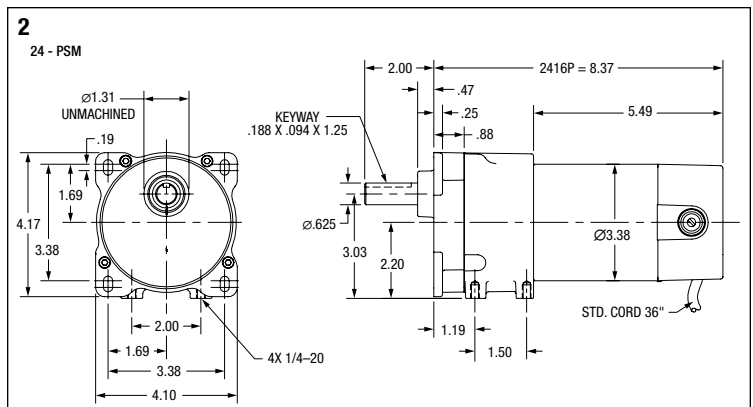
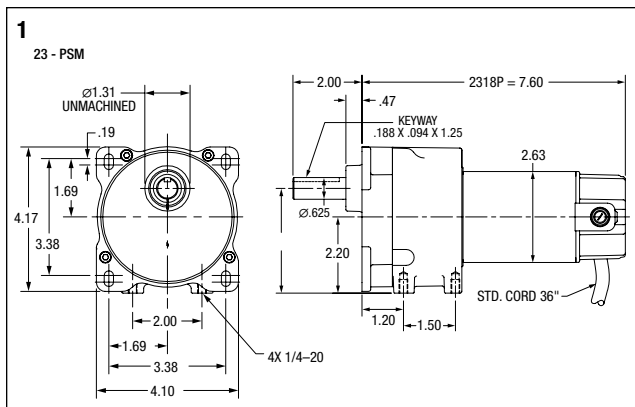
GPP233141 Shown
PSM Style

Applications: Conveyors, medical and laboratory equipment, printing presses, commercial ovens, machine tools and many other applications requiring adjustable speed.

Features: Induction hardened helical and spur gears for extra strength. Ball and needle-bearing construction for improved torque capacity. Factory lubricated for life, no maintenance required. PSM is face or foot mounted with industry standard dimensions. Optional bases are available for foot or 3-point face mounting, see pages 366 and 401.

Input Motor Hp	Output Base Speed	Gear Ratio	Stages	Max. Safe Torque In. Lbs.	Catalog (a) Number	List Price	Mult. Sym.	Ap'x. Shpg. Wgt.	Motor Type & Gear Style	Voltage D.C. Armature	Full Load Amperage Armature	Notes (b)	Drawing Number
1/20	34	52.9:1	3	85	GPP230053	556	DS	10	2318P-PSM	90	0.30	20	1
	8.7	208:1	4	293	GPP230208	589	DS	10	2318P-PSM	90	0.30	20	1
	7.5	329:1	4	183	GPP231329	589	DS	10	2318P-PSM	90	0.30	20	1
1/16	15.4	120:1	4	197	GPP233141	605	DS	10	2318P-PSM	90	0.66	20	1
	18.6	90:1	4	180	GPP233140	605	DS	10	2318P-PSM	90	0.77	20	1
1/8	22	81.8:1	3	300	GPP12582	643	DS	12	2416P-PSM	90	1.35	20	2
	30	58.3:1	3	230	GPP12556	609	DS	12	2416P-PSM	90	1.35	20	2
	42	60:1	3	165	GPP12547	606	DS	12	2416P-PSM	90	1.35	20	2
	63	40:1	3	116	GPP12545	606	DS	12	2416P-PSM	90	1.35	20	2
	83	30:1	3	90	GPP12544	606	DS	12	2416P-PSM	90	1.35	20	2
	94	19.1:1	2	76	GPP12559	623	DS	12	2416P-PSM	90	1.35	20	2
	125	20:1	2	58	GPP12543	579	DS	12	2416P-PSM	90	1.35	20	2
	167	15:1	2	45	GPP12542	579	DS	12	2416P-PSM	90	1.35	20	2
1/4	250	10:1	2	30	GPP12555	623	DS	12	2416P-PSM	90	1.35	20	2
	500	5:1	2	15	GPP12541	579	DS	12	2416P-PSM	90	1.35	20	2
	42	42.9:1	3	300	GPP24043	666	DS	14	2424P-PSM	90	2.50	20	2
	64	28.1:1	3	235	GPP24029	666	DS	14	2424P-PSM	90	2.50	20	2
	94	19.1:1	2	160	GPP24019	634	DS	14	2424P-PSM	90	2.50	20	2
1/8	170	10.6:1	2	90	GPP24011	634	DS	14	2424P-PSM	90	2.50	20	2
	360	5:1	2	40	GPP24005	634	DS	14	2424P-PSM	90	2.50	20	2
	42	60:1	3	174	GPP12567	585	DS	11	2416P-PSM	180	0.65	20	2
	83	30:1	3	87	GPP12564	585	DS	11	2416P-PSM	180	0.65	20	2
1/8	250	10:1	2	30	GPP12561	579	DS	11	2416P-PSM	180	0.65	20	2
	500	5:1	2	14.8	GPP12560	579	DS	11	2416P-PSM	180	0.65	20	2

- (a) Vertical motor below gearhead not recommended.
Avoiding those positions where the high speed oil seal is immersed in oil, will provide greater security against high speed input seal wear.
- (b) See notes on inside back flap.





GPP7459 Shown
PSL Style

Applications: Conveyors, medical and laboratory equipment, printing presses, commercial ovens, machine tools and many other applications requiring adjustable speed.

Features: Induction hardened helical gears for added strength. Ball and needle-bearing construction for improved torque capacity. Factory lubricated for life, no maintenance required. PSL is face mounted with industry standard dimensions. An optional bolt on base is available for foot mounting. See pages and 401.

Input Motor Hp	Output Base Speed	Gear Ratio	Stages	Max. Safe Torque In. Lbs.	Catalog (a) Number	List Price	Mult. Sym.	Ap'x. Shpg. Wgt.	Motor Type & Gear Style	Voltage D.C. Armature	Full Load Amperage Armature	Notes (b)	Drawing Number
1/8	8.3	300:1	4	330	GPP7459	764	DS	17	2416P-PSL	90	0.76	20	1
1/8	10.4	240:1	4	330	GPP7462	764	DS	17	2416P-PSL	90	0.71	20	1
1/4	14	180:1	4	365	GPP7458	764	DS	17	2424P-PSL	90	1.20	20	1
1/4	21	120:1	4	365	GPP7457	764	DS	17	2424P-PSL	90	1.70	20	1
1/4	28	90:1	4	390	GPP7461	764	DS	17	2424P-PSL	90	2.25	20	1
1/4	42	60:1	3	280	GPP7456	733	DS	17	2424P-PSL	90	2.50	20	1
1/4	50	50:1	3	250	GPP7460	733	DS	17	2424P-PSL	90	2.50	20	1
1/4	62	40:1	3	200	GPP7455	733	DS	17	2424P-PSL	90	2.50	20	1
1/4	83	30:1	3	150	GPP7454	733	DS	17	2424P-PSL	90	2.50	20	1
1/4	125	20:1	2	100	GPP7453	733	DS	17	2424P-PSL	90	2.50	20	2
1/4	165	15:1	2	75	GPP7452	674	DS	15	2424P-PSL	90	2.50	20	2
1/4	250	10:1	2	50	GPP7451	674	DS	17	2424P-PSL	90	2.50	20	2
1/4	500	5:1	2	25	GPP7450	674	DS	17	2424P-PSL	90	2.50	20	2
1/3	58	30:1	3	320	GPP2530	1,001	DS	24	2532P-PSLH	90	3.20	20	3
1/3	113	15:1	2	164	GPP2534	953	DS	24	2532P-PSLH	90	3.20	20	3
1/3	345	5:1	2	55	GPP2538	953	DS	24	2532P-PSLH	90	3.20	20	3
1/2	83	30:1	3	337	GPP3340	1,125	DS	35	3327P-PSLH	90	5.00	20	4
1/2	167	15:1	2	171	GPP3344	1,125	DS	31	3327P-PSLH	90	5.00	20	4
1/2	500	5:1	2	57	GPP3348	1,076	DS	35	3327P-PSLH	90	5.00	20	4
1/8	8.3	300:1	4	330	GPP7479	764	DS	17	2424P-PSL	180	0.38	20	1
1/4	14	180:1	4	365	GPP7478	764	DS	17	2424P-PSL	180	0.60	20	1
1/4	21	120:1	4	365	GPP7477	764	DS	17	2424P-PSL	180	0.85	20	1
1/4	42	60:1	3	280	GPP7476	733	DS	17	2424P-PSL	180	1.25	20	1
1/4	62	40:1	3	200	GPP7475	733	DS	17	2424P-PSL	180	1.25	20	1
1/4	83	30:1	3	155	GPP7474	733	DS	17	2424P-PSL	180	1.25	20	1
1/4	125	20:1	2	100	GPP7473	733	DS	17	2424P-PSL	180	1.25	20	2
1/4	165	15:1	2	75	GPP7472	674	DS	17	2424P-PSL	180	1.25	20	2
1/4	250	10:1	2	50	GPP7471	674	DS	17	2424P-PSL	180	1.25	20	2
1/4	500	5:1	2	25	GPP7470	674	DS	17	2424P-PSL	180	1.25	20	2
1/3	58	30:1	3	320	GPP3370	1,125	DS	35	3327P-PSLH	180	1.50	20	4
1/3	115	15:1	2	164	GPP3374	1,076	DS	35	3327P-PSLH	180	1.50	20	4
1/3	345	5:1	2	55	GPP3378	1,076	DS	35	3327P-PSLH	180	1.60	20	4
1/2	83	30:1	3	337	GPP3380	1,125	DS	35	3327P-PSLH	180	2.50	20	4
1/2	167	15:1	2	171	GPP3384	1,076	DS	35	3327P-PSLH	180	2.50	20	4
1/2	500	5:1	2	57	GPP3388	1,076	DS	35	3327P-PSLH	180	2.50	20	4

(a) Vertical motor below gearhead not recommended.

Avoiding those positions where the high speed oil seal is immersed in oil, will provide greater security against high speed input seal wear.

(b) See notes on inside back flap.

