

Classical A/B Combination, C & D



Features: Complete line in stock, including larger models. Designed for use with QD bushing & corresponding belts. A/B models from 1-6; 8; 10 grooves. C model from 1-6; 8; 10; 12 grooves. D model from 3-6; 8; 10; 12 grooves.

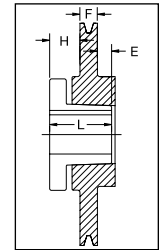
Note: DO NOT use these gray cast iron sheaves with rim speeds in excess of 6500 feet per minute.

How to order: Example: 6B70; 6=Number of grooves. B = "A/B" Combination sheave section. 70 = Datum diameter for "B" belts (7.0")

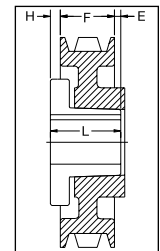
"A/B" COMBINATION 1 GROOVE

Dimensions

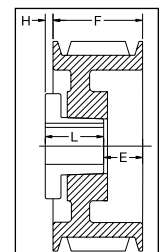
Datum dia.		O.D.	Part No.	List Price	Mult. Sym.	F = 7/8 up to 7.15 O.D. & 1 inch thereafter					Approx. Wt. (lbs)
A(4L) Belts	B(5L) Belts					H	Type	B	L	E	
3.0	3.4	3.75	1B34 ¹	26.00	QDS05	5/8	11B	SH	1 1/4	1/4	1
3.2	3.6	3.95	1B36	27.00	QDS05	1/2	6B	SH	1 1/4	1/8	1
3.4	3.8	4.15	1B38	28.00	QDS05	1/2	6B	SH	1 1/4	1/8	2
3.6	4.0	4.35	1B40	29.00	QDS05	1/2	6B	SH	1 1/4	1/8	2
3.8	4.2	4.55	1B42	30.00	QDS05	1/2	6B	SH	1 1/4	1/8	2
4.0	4.4	4.75	1B44	31.00	QDS05	1/2	6B	SH	1 1/4	1/8	2
4.2	4.6	4.95	1B46	32.00	QDS05	7/16	7B	SDS	1 5/16	0	2
4.4	4.8	5.15	1B48	33.00	QDS05	7/16	7B	SDS	1 5/16	0	3
4.6	5.0	5.35	1B50	34.00	QDS05	7/16	7B	SDS	1 5/16	0	3
4.8	5.2	5.55	1B52	35.00	QDS05	7/16	7B	SDS	1 5/16	0	3
5.0	5.4	5.75	1B54	36.00	QDS05	7/16	7B	SDS	1 5/16	0	4
5.2	5.6	5.95	1B56	37.00	QDS05	7/16	7B	SDS	1 5/16	0	4
5.4	5.8	6.15	1B58	38.00	QDS05	7/16	7B	SDS	1 5/16	0	4
5.6	6.0	6.35	1B60	40.00	QDS05	7/16	7B	SDS	1 5/16	0	5
5.8	6.2	6.55	1B62	42.00	QDS05	7/16	7B	SDS	1 5/16	0	5
6.0	6.4	6.75	1B64	44.00	QDS05	7/16	7B	SDS	1 5/16	0	6
6.2	6.6	6.95	1B66	48.00	QDS05	7/16	7B	SDS	1 5/16	0	6
6.4	6.8	7.15	1B68	50.00	QDS05	7/16	7B	SDS	1 5/16	0	6
6.6	7.0	7.35	1B70	52.00	QDS05	9/16	6A	SDS	1 5/16	1/4	6
7.0	7.4	7.75	1B74	56.00	QDS05	9/16	6A	SDS	1 5/16	1/4	6
7.6	8.0	8.35	1B80	58.00	QDS05	9/16	6A	SDS	1 5/16	1/4	7
8.2	8.6	8.95	1B86	62.00	QDS05	9/16	6A	SDS	1 5/16	1/4	8
8.6	9.0	9.35	1B90	63.00	QDS05	9/16	6A	SDS	1 5/16	1/4	9
9.0	9.4	9.75	1B94	64.00	QDS05	9/16	6A	SDS	1 5/16	1/4	9
10.6	11.0	11.35	1B110	76.00	QDS05	9/16	6A	SDS	1 5/16	1/4	11
12.0	12.4	12.75	1B124	90.00	QDS05	9/16	6A	SDS	1 5/16	1/4	12
13.2	13.6	13.95	1B136	96.00	QDS05	9/16	6A	SDS	1 5/16	1/4	13
15.0	15.4	15.75	1B154	116.00	QDS05	11/16	5A	SK	1 7/8	3/16	20
15.6	16.0	16.35	1B160	136.00	QDS05	7/8	3A	SK	1 7/8	0	22
18.0	18.4	18.75	1B184	156.00	QDS05	15/16	10A	SK	1 7/8	1/16	28
19.6	20.0	20.35	1B200	230.00	QDS05	13/16	5A	SK	1 7/8	1/16	30
24.6	25.0	25.35	1B250	350.00	QDS05	15/16	10A	SK	1 7/8	1/16	40



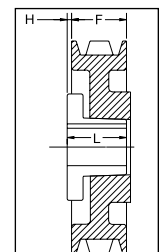
TYPE 3



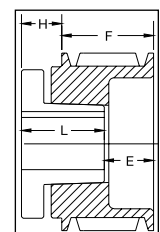
TYPE 5



TYPE 6



TYPE 7



TYPE 10

P.D. for "A" (4L) Belts = Datum Dia. + .35" = O.D. - .40 P.D. for "B" (5L) Belts = O.D. ¹ Reverse mount only.

Type of sheave "T": A = arms; B = block; W = web

For more details and additional products, see complete Baldor•Maska® Product Catalog or www.maskapulleys.com