

GEAR+MOTORS™

Integral Gearmotors

Gear Reducers

ELECTRA-GEAR

LEESON

GROVE GEAR

Geared to be the Best

Geared to be the Best



A Team Dedicated to Customer Satisfaction

The entire GROVE GEAR team is committed to providing superior customer service and engineering support, exceptional design, manufacturing quality, competitive pricing and one of the best lead times in the industry.

Our focus on

quality combined with our state-of-the-art machinery, software, quality assurance systems and testing equipment has positioned us as a leading solutions provider in today's fast-paced industrial environment.



Product Support is Just a Click Away

www.grovegear.com

Download:

- Catalogs
- Shaft-hand assembly change procedures
- Instruction and maintenance manuals
- 2-D cad drawings
- Parts lists



Visit the NEW Grove Gear Online Product Configurator

- Search product by serial number or model number
- Select Grove Gear worm products by horsepower, ratio, assembly or style
- View dimensions
- Download 2-D Cad files
- Compare products to optimize selection
- Request a quote online



Premium Gear Redu



Grove Gear Flexaline™ and O.E. Series™ Worm Gear Reducers

Fourteen sizes available with ratings to 104 HP.

Available in single, double and triple reduction with ratios from 5:1 to 216,000:1. Helical worm ratios from 25:1 to 600:1.

Non-compressible metal shims maintain factory settings and gear alignment throughout product life.

O-rings on input and output covers eliminate gaskets, sealants and leaks.

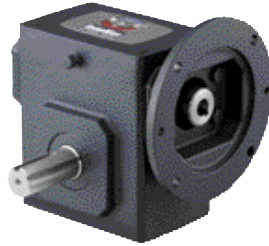
Premium Viton® double-lip seals throughout provide long life and resistance to high temperatures, abrasion and chemicals.

Unique input seal guard protects against input seal damage during motor installation.

O.E. Series™ features a compact housing design to fit in reduced space allocations.

Mounting dimensions are interchangeable with most major competitors.

Over 10,000,000 installed.



LEESON IRONMAN Worm Reducers and GEAR+MOTORS™

Eleven sizes available with ratings to 35 HP.

Available in single and double reduction ratios from 5:1 to 10,000:1.

Premium Viton® double-lip seals.

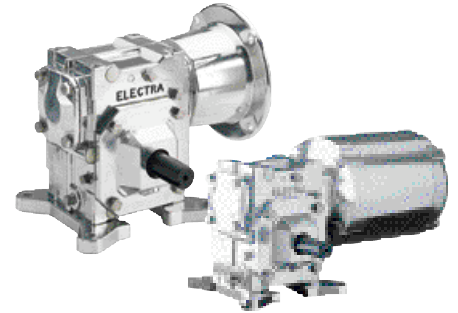
Factory-filled with premium Mobil SHC-634 synthetic lubricant.

O-rings on input and output covers eliminate gaskets, sealants and leaks.

Output shaft key provided.

Available pre-assembled with LEESON or Lincoln Motors for the perfect GEAR+MOTOR™ package.

Mounting dimensions are interchangeable with most major competitors.



Electra Gear Aluminum Worm Reducers and Integral Gearmotors

Nine sizes available to 29 HP.

Available in single, double and triple reduction with ratios from 5:1 to 216,000:1.

Clean, polished and paint-free finish.

Lightweight alternative to cast iron.

Lower cost alternative to stainless steel.

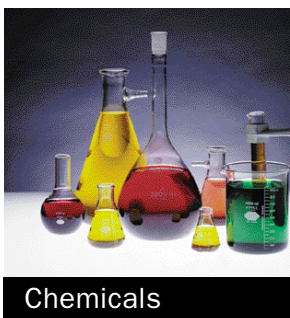
Superior corrosion resistance to painted cast iron.

Stainless steel shafts and hardware available.

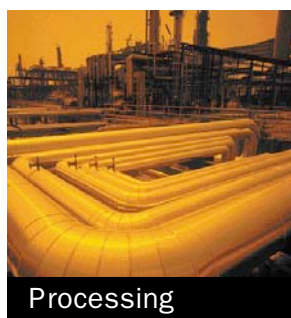
Quality

Superior Design and Precision Manufacturing

A Multitude of Applications



Chemicals



Processing



Meat



Car Wash

ELECTRA-GEAR

LEESON

GROVE GEAR

Reducers, GEAR+MOTORS™ and Ratio Multipliers



IRONMAN High Efficiency GEAR+MOTORS™ and Reducers

The IRONMAN High Efficiency products are a modular design, including the concentric helical inline reducers, right-angle helical-bevel and helical-worm reducers.

Nine sizes of inline reducers with ratios from 2.2 to 3700:1 and ratings to over 125 HP.

Six sizes of helical-bevel reducers with ratios from 6.2 to 3400:1 and ratings to over 130 HP.

Four sizes of helical-worm reducers with ratios from 7:1 to 3400:1 and ratings to 17 HP.

IRONMAN reducers are available with LEESON or Lincoln motors pre-assembled for the perfect performance-matched solution.

Ironman High Efficiency reducers are dimensionally interchangeable to major worldwide competitors.

Express shipment programs available.



Bravo and LeCentric Aluminum Gear Reducers

Bravo worm reducers available in five sizes with ratings to 7.5 HP and in ratios from 7:1 to 70:1.

LeCentric inline reducers available in four sizes with ratings to 15 HP and in ratios from 3.5:1 to 280:1.

Fit into small spaces. Up to one third smaller than other brands.

Sealed for life, never change or add oil.

Lightweight OEM design suitable for mobile equipment and difficult installations.

Mounting dimensions are interchangeable with most major worldwide competitors.



Ratio Multipliers

Three sizes available in cast iron with ratings to 20 HP and ratios from 2:1 to 7.5:1.

Three sizes available in aluminum with ratings to 13 HP and ratios from 1.3:1 to 10.8:1

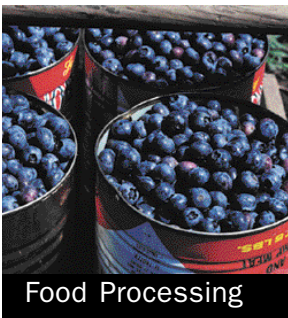
One size available in stainless steel with ratings to 4.7 HP and ratios from 2:1 to 7.5:1

All ratio multipliers feature helical gearing to optimize system efficiency.

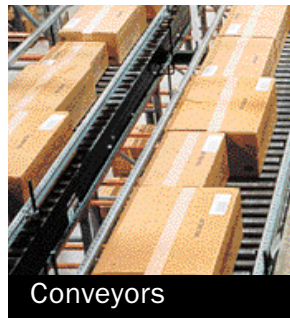
Dual purpose design can be used as a stand-alone single reduction inline reducer or as a bolt-on to the input of any c-faced gear reducer to multiply overall reduction ratio.

Interchangeability

Replace all major brands



Food Processing



Conveyors



Specialty Lifts



Communication

ELECTRA-GEAR

LEESON

GROVE GEAR

tegral Gearmotors



Premium Stainless Steel Worm Reducers

Six sizes available with ratings to 17 HP.

Available in single and double reduction with ratios from 5:1 to 3600:1.

316 stainless steel housing and covers.

303 stainless steel output shaft.

Double-lip stainless steel case Viton® seals.

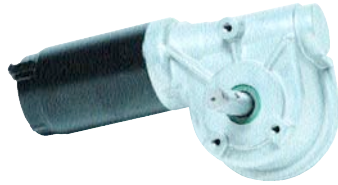
Vent-free and “sealed-for-life” design with Enviroseal technology.

Factory filled with premium Mobil SHC-634 synthetic lubricant.

Worms are cut, heat-treated, ground and polished to provide efficient, quiet operation.

Solid and hollow output shafts available.

Package Solutions From Grove Gear

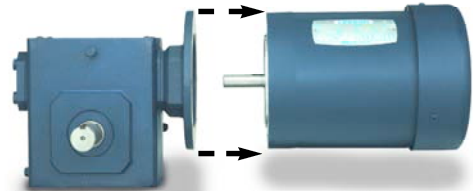


Custom Solutions

Unmatched manufacturing facilities provide low cost solutions for your gearing needs.

From inexpensive designs to elaborate transmissions, miniature integral gearmotors to gearboxes rated for 1,000 HP, Grove Gear can solve your toughest transmission needs.

From application review and design to manufacturing and testing, a quality-based partnership is assured with Grove Gear.



GEAR+MOTOR™

Preassembled GEAR+MOTORS™ are an in-house specialty.

Performance matched LEESON and Lincoln motors available attached to any Grove Gear, Electra-Gear or LEESON gear reducer.

Thousands of speed and torque combinations available from stock.

Save time and expense with no cost for the labor.

Best variable speed products in the industry—from simple inverter duty and vector duty motors to permanent magnet DC motors.

Reliability

Trust your partners with over 10,000,000 gear reducers installed worldwide.



Solar Power



Dairy



Medical



Bottling

ELECTRA-GEAR



GROVE GEAR

LEESON District Sales Offices & Warehouses can provide complete information including price and availability on both standard stock and special motors.

ARKANSAS, Little Rock

District Mgr.,
Kevin Springstead
972/245-2017
Fax: 972/245-2328

CALIFORNIA, Los Angeles

Co-District Mgrs.,
Felix Wilson,
Oswald Aguirre
323/278-7979
Fax: 323/278-7955

CALIFORNIA, San Francisco

District Mgr.,
Dave Richardson
925/371-8125
Fax: 925/371-5673

COLORADO, Denver

District Mgr.,
Mike Kannawin
303/331-6500
Fax: 303/331-6510

CONNECTICUT, Hartford / Metro Boston, MA

Co-District Mgrs.,
Craig Brisbane,
Joel Casaubon
508/347-5117
Fax: 508/347-2612

FLORIDA, Tampa

District Mgr., Bill Taylor
813/740-2571
Fax: 813/663-9104

GEORGIA, Atlanta

District Mgr., Walter Brooks
770/933-0453
Fax: 770/933-0549

ILLINOIS, Chicago

Co District Mgrs.,
Mike Miller,
Robert Sheppard
630/458-9511
Fax: 630/458-1923

INDIANA, Indianapolis

District Mgr.,
Mark Rodman
317/776-2600
Fax: 317/776-2007

IOWA, Des Moines

District Mgr.,
Bob Lewis
515/827-5011
Fax: 515/827-5011

KANSAS, Kansas City

District Mgr., Pat Donnelly
913/599-6983
Fax: 913/599-6987

MARYLAND/Baltimore

District Mgr., Craig Brisbane
570/325-3684
Fax: 570/325-3870

MICHIGAN, Grand Rapids

District Mgr., Greg Norris
616/249-8430
Fax: 616/249-8628

MINNESOTA, Minneapolis

District Mgr., John Marshalla
952/935-8273
Fax: 952/935-8399

MISSOURI, St. Louis

District Managers
Pat and Ken Anvender
314/714-1460
Fax: 314/714-1461

NEW JERSEY/METRO**NEW YORK/LONG ISLAND**

(Plainfield, NJ 18229)
Contact: Dave Beck
570/325-3684
Fax: 570/325-3870

NEW YORK, Syracuse

District Mgr.,
Chris Brisbane
866/505-8796
Fax: 570/325-3870

NORTH CAROLINA, Charlotte

District Mgrs.,
Steve McAbee
and Doug Landgraf
803/396-8200
Fax: 803/396-8208

OHIO, Cincinnati

District Mgr., Ken Simko
513/755-1000
Fax: 513/755-1081

OHIO, Cleveland

District Mgr., Matt Simko
440/951-5117
Fax: 440/975-3575
800/331-2911 (W.PA, WV)

OKLAHOMA, Oklahoma City

Contact: Owen Stone,
Gary Robinson
405/348-5700
Fax: 405/348-0600

PENNSYLVANIA, Allentown/Philadelphia

District Mgr., Craig Brisbane
570/325-3684
Fax: 570/325-3870

TEXAS, Dallas

District Mgr., Homer
Rodden,
Kevin Springstead
972/245-2017
Fax: 972/245-2328

TEXAS, Houston

Contact,
Donnie Heckler
713/952-5337
Fax: 972/245-2328

UTAH, Salt Lake City

District Mgr., Dennis Vest
800/730-5290
Fax: 303/331-6510

WASHINGTON, Seattle

District Mgr.,
Amorette Gent
425/775-3504
Fax: 425/775-6706

WISCONSIN, Milwaukee

District Mgr., Tom Bares
414/475-9222
Fax: 414/475-9267

INTERNATIONAL

International Sales
Administrator,
Sue Kastner
WISCONSIN, Grafton
(+1) 262/377-8810
Fax: (+1) 262/377-3440

ASIA

CHINA, Shanghai
(+86) 21-625-317-00
Fax: (+86) 21-625-587-07

CENTRAL AMERICA,**SOUTH AMERICA & CARIBBEAN**

FLORIDA, Miami
Contact: Manny Garcia, Jr.
(+1) 305/220-4423
Fax: (+1) 305/220-5945

EUROPE

ITALY, Bologna
(+39) 051-731-487
Fax: (+39) 051-734-943

LEESON CANADA**ALBERTA, Edmonton**

Branch Mgr.,
Mike Strenkowski
780/437-3380
Fax: 780/434-3448

BRITISH COLUMBIA, Vancouver

Branch Mgr.,
Jeff Male
604/941-0352
Fax: 604/941-0659

MANITOBA, Winnipeg

Branch Mgr., Charlie Vogel
204/786-6802
Fax: 204/786-6934

NEW BRUNSWICK, Moncton

Branch Mgr., Ken Sheehan
506/383-8883
Fax: 506/383-8887

ONTARIO, Toronto

National Sales Mgr.,
Frank Pesce
905/670-4770
Fax: 905/670-4378

ONTARIO, Hanover

Branch Mgr.,
Doug Stafford
800/463-1797
Fax: 800/225-9007

QUEBEC, Montreal

Branch Mgr.,
Benoit Gagne
514/337-8020
Fax: 514/337-0773



More Than Just a Motor Company

GRAFTON, WISCONSIN 53024-0241 U.S.A.
TEL (262) 878-1221 FAX (262) 878-1968
www.grovegear.com • sales.grovegear@regalbelloit.com

