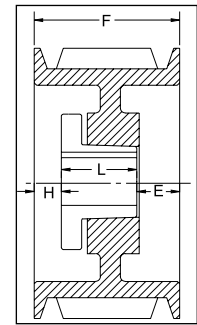


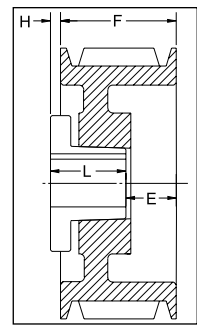
"C" SECTION 3 GROOVES

Dimensions

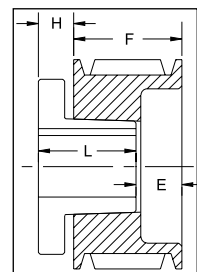
Datum dia.	O.D.	Part No.	List Price	Mult. Sym.	F = 3 3/8 inches					
					H	Type	B	L	E	Approx. Wt. (lbs)
5.0	5.4	3C50*	136.00	QDS06	5/16	1B	SD	1 13/16	1 1/4	9
5.0	5.4	3C50SK¹	136.00	QDS06	13/16	11B	SK	1 7/8	2 5/16	10.5
5.6	6.0	3C56	138.00	QDS06	5/8	1B	SD	1 13/16	15/16	10
6.0	6.4	3C60	140.00	QDS06	1/16	1B	SF	2	1 5/16	11.3
7.0	7.4	3C70	144.00	QDS06	1/2	1B	SF	2	7/8	16
7.5	7.9	3C75	148.00	QDS06	1/2	1B	SF	2	7/8	18
8.0	8.4	3C80	156.00	QDS06	11/16	1B	E	2 5/8	1/16	21
8.5	8.9	3C85	176.00	QDS06	11/16	1B	E	2 5/8	1/16	24
9.0	9.4	3C90	188.00	QDS06	11/16	1B	E	2 5/8	1/16	26
9.5	9.9	3C95	200.00	QDS06	11/16	1W	E	2 5/8	1/16	29.8
10.0	10.4	3C100	220.00	QDS06	11/16	1W	E	2 5/8	1/16	34
10.5	10.9	3C105	230.00	QDS06	11/16	1W	E	2 5/8	1/16	37
11.0	11.4	3C110	240.00	QDS06	11/16	1W	E	2 5/8	1/16	39
12.0	12.4	3C120	250.00	QDS06	11/16	1W	E	2 5/8	1/16	43.4
13.0	13.4	3C130	290.00	QDS06	11/16	1A	E	2 5/8	1/16	45
14.0	14.4	3C140	320.00	QDS06	11/16	1A	E	2 5/8	1/16	50
16.0	16.4	3C160	330.00	QDS06	11/16	1A	E	2 5/8	1/16	60
18.0	18.4	3C180	350.00	QDS06	11/16	1A	E	2 5/8	1/16	63
20.0	20.4	3C200	400.00	QDS06	1/16	6A	E	2 5/8	13/16	81
24.0	24.4	3C240	480.00	QDS06	1/16	6A	E	2 5/8	13/16	94.7
27.0	27.4	3C270	580.00	QDS06	13/32	6A	F	3 5/8	5/32	116
30.0	30.4	3C300	640.00	QDS06	13/32	6A	F	3 5/8	5/32	134.4
36.0	36.4	3C360	980.00	QDS07	13/32	6A	F	3 5/8	5/32	159
44.0	44.4	3C440	1720.00	QDS07	13/32	6A	F	3 5/8	5/32	190
50.0	50.4	3C500	1920.00	QDS07	13/32	6A	F	3 5/8	5/32	250



TYPE 1



TYPE 6



TYPE 11

P.D. for "C" Belts = O.D.

¹ Reverse mount only.

* Mounting bolts are supplied by Baldor with these parts.

Type of sheave "T": A = arms; B = block; W = web