

"A/B" COMBINATION

4 GROOVES

Dimensions

Datum dia.		O.D.	Part No.	List Price	Mult. Sym.	F = 3 1/4 inches					
"A" Belts	"B" Belts					H	Type	B	L	E	Approx. Wt. (lbs)
3.0	3.4	3.75	4B34^{1*}	64.00	QDS05	1	10B	SD	1 13/16	2 7/16	4
3.2	3.6	3.95	4B36^{1*}	66.00	QDS05	1	10B	SD	1 13/16	2 7/16	5
3.4	3.8	4.15	4B38^{1*}	68.00	QDS05	1	10B	SD	1 13/16	2 7/16	6
3.6	4.0	4.35	4B40^{1*}	70.00	QDS05	11/16	11B	SD	1 13/16	2 1/8	5
3.8	4.2	4.55	4B42^{1*}	72.00	QDS05	11/16	11B	SD	1 13/16	2 1/8	6
4.0	4.4	4.75	4B44*	74.00	QDS05	11/16	11B	SD	1 13/16	2 1/8	6
4.2	4.6	4.95	4B46*	76.00	QDS05	5/8	1B	SD	1 13/16	13/16	7
4.4	4.8	5.15	4B48	78.00	QDS05	5/8	1B	SD	1 13/16	13/16	8
4.6	5.0	5.35	4B50	80.00	QDS05	5/8	1B	SD	1 13/16	13/16	8
4.8	5.2	5.55	4B52	82.00	QDS05	5/8	1B	SD	1 13/16	13/16	9
5.0	5.4	5.75	4B54	84.00	QDS05	5/8	1B	SD	1 13/16	13/16	10
5.2	5.6	5.95	4B56	86.00	QDS05	5/8	1B	SD	1 13/16	13/16	10
5.4	5.8	6.15	4B58	88.00	QDS05	5/8	1W	SD	1 13/16	13/16	11
5.6	6.0	6.35	4B60	90.00	QDS05	5/8	1W	SD	1 13/16	13/16	11
5.8	6.2	6.55	4B62	92.00	QDS05	5/8	1W	SD	1 13/16	13/16	12
6.0	6.4	6.75	4B64	96.00	QDS05	5/8	1W	SD	1 13/16	13/16	11
6.2	6.6	6.95	4B66	100.00	QDS05	5/8	1W	SD	1 13/16	13/16	11
6.4	6.8	7.15	4B68	104.00	QDS05	5/8	1W	SD	1 13/16	13/16	12
6.6	7.0	7.35	4B70	108.00	QDS05	3/16	1W	SK	1 7/8	1 3/16	13
7.0	7.4	7.75	4B74	112.00	QDS05	3/16	1W	SK	1 7/8	1 3/16	15
7.6	8.0	8.35	4B80	116.00	QDS05	3/16	1W	SK	1 7/8	1 3/16	15
8.2	8.6	8.95	4B86	124.00	QDS05	3/16	1A	SK	1 7/8	1 3/16	17
8.6	9.0	9.35	4B90	131.00	QDS05	3/16	1A	SK	1 7/8	1 3/16	17
9.0	9.4	9.75	4B94	138.00	QDS05	3/16	1A	SK	1 7/8	1 3/16	19
10.6	11.0	11.35	4B110	152.00	QDS05	3/16	1A	SK	1 7/8	1 3/16	25
12.0	12.4	12.75	4B124	170.00	QDS05	3/16	1A	SK	1 7/8	1 3/16	28
13.2	13.6	13.95	4B136	204.00	QDS05	3/16	1A	SK	1 7/8	1 3/16	32
15.0	15.4	15.75	4B154	224.00	QDS05	3/16	1A	SF	2	1 1/16	38
15.6	16.0	16.35	4B160	244.00	QDS05	3/16	1A	SF	2	1 1/16	41
18.0	18.4	18.75	4B184	260.00	QDS05	3/16	1A	SF	2	1 1/16	48
19.6	20.0	20.35	4B200	364.00	QDS05	3/16	1A	SF	2	1 1/16	60
24.6	25.0	25.35	4B250	480.00	QDS05	1/16	6A	E	2 5/8	11/16	93
29.6	30.0	30.35	4B300	560.00	QDS05	1/16	6A	E	2 5/8	11/16	120
37.6	38.0	38.35	4B380	980.00	QDS07	0	4A	E	2 5/8	5/8	162

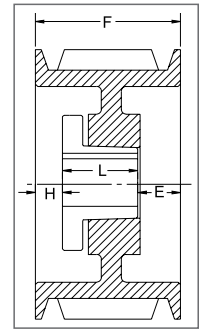
P.D. for "A" (4L) Belts = Datum Dia. + .35" = O.D. - .40

P.D. for "B" (5L) Belts = O.D.

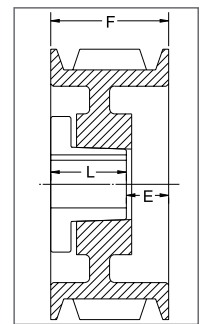
¹ Reverse mount only.

* Mounting bolts are supplied by Baldor with these parts.

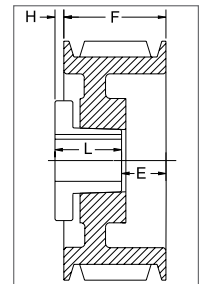
Type of sheave "T": A = arms; B = block; W = web



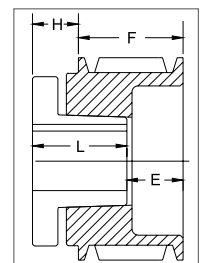
TYPE 1



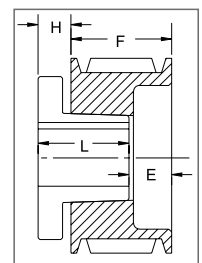
TYPE 4



TYPE 6



TYPE 10



TYPE 11