

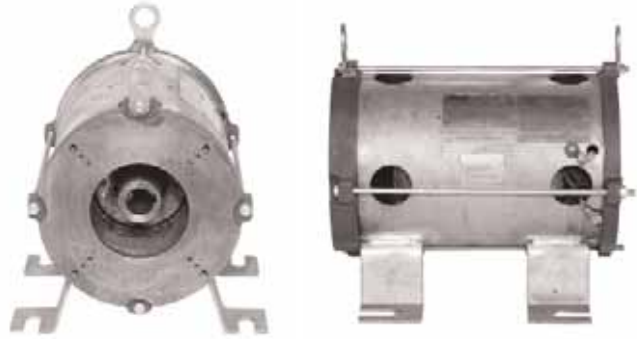
SUBMERSIBLE HYDRAULIC ELEVATOR PUMP MOTORS



**3-PHASE • TOTALLY OPEN FRAME CONSTRUCTION
FOOT MOUNTED IN 160ZBS FRAME SIZE**

Features:

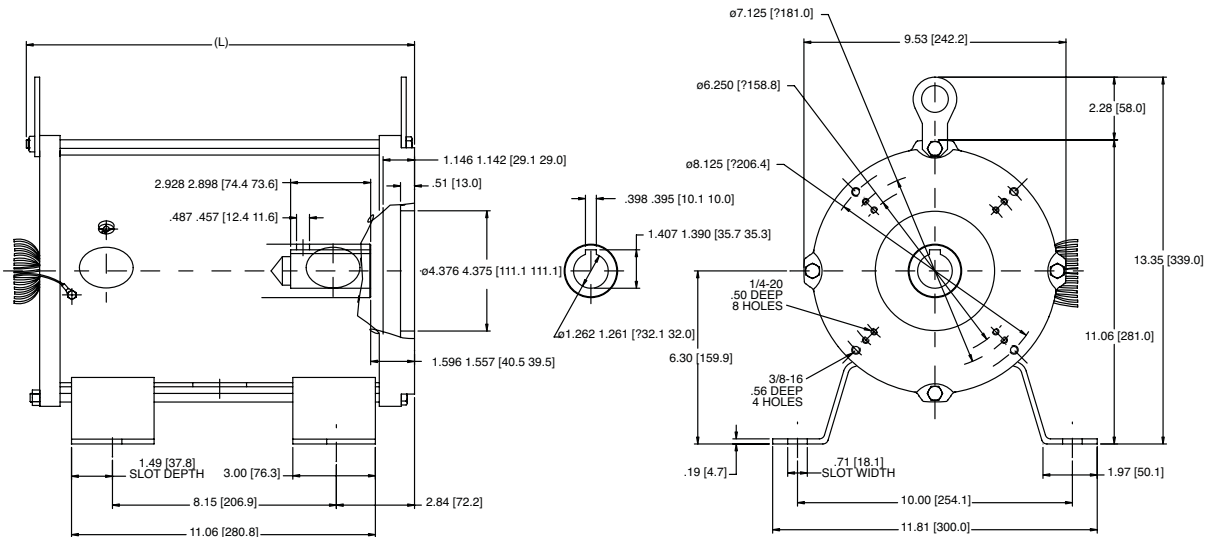
- Intermittent Duty
- Suitable for Wye-Delta Starters
- 1.0 service factor and 70°C Ambient rated
- Three bolt circles, 12 mounting holes, and face mounting to accept both the IMO and Allweiler pumps
- 10 foot long leads, spliced 40 inches from motor to prevent wicking of hydraulic fluid
- Thermostat leads are marked P1 and P2
- Class F insulation
- Two Stainless Steel nameplates, one shipped separate for remote mount
- UL Recognized Component Listing and CSA Approved



Applications:

These motors are designed to meet the demands in the Hydraulic Elevator Pump Industry. Our Submersible Hydraulic pump elevator motors are ready to be placed in elevator systems for applications in hydraulic pump passenger, service, freight and low-rise elevators. Rated up to 6 floors at speeds up to 200 fpm.

HP	SYN RPM	Frame	Volts	BTU/HR Motor Losses	KVA Code	FL Amps	Locked Rotor Amps	Model Number	Product Number	FL Eff.	Approx Shpg Wght (lbs)	List Price	Mult Sym
15	3600	160Z	200	14736	H	53	268	SD2S15Z6006YEH3	LM29656	72.2	110	\$862	SU1-A
	3600	160Z	230/460	14736	H	46/23	250/125	SD2S15Z61YEH3	LM29657	72.2	110	862	SU1-A
	3600	160Z	575	14736	H	18.4	100	SD2S15Z65YEH3	LM29658	72.2	110	862	SU1-A
20	3600	160Z	200	11792	G	64.4	363	SD2S20Z6006YEH3	LM29659	76.4	112	883	SU1-A
	3600	160Z	230/460	11792	G	56/28	316/158	SD2S20Z61YEH3	LM29660	76.4	112	883	SU1-A
	3600	160Z	575	11792	G	22.4	126	SD2S20Z65YEH3	LM29661	76.4	112	883	SU1-A
25	3600	160Z	200	10148	G	77.1	268	SD2S25Z6006YEH3	LM29662	79.0	115	962	SU1-A
	3600	160Z	230/460	10148	G	67/33.5	250/125	SD2S25Z61YEH3	LM29663	79.0	115	962	SU1-A
	3600	160Z	575	10148	G	26.8	100	SD2S25Z65YEH3	LM29664	79.0	115	962	SU1-A
30	3600	160Z	200	9603	G	92	268	SD2S30Z6006YEH3	LM29665	79.9	119	1072	SU1-A
	3600	160Z	230/460	9603	G	80/40	250/125	SD2S30Z61YEH3	LM29666	79.9	119	1072	SU1-A
	3600	160Z	575	9603	G	32	100	SD2S30Z65YEH3	LM29667	79.9	119	1072	SU1-A
40	3600	160Z	200	7271	G	115	268	SD2S40Z6006YEH3	LM29668	84.0	132	1374	SU1-A
	3600	160Z	230/460	7271	G	100/50	250/125	SD2S40Z61YEH3	LM29669	84.0	132	1374	SU1-A
	3600	160Z	575	7271	G	40	100	SD2S40Z65YEH3	LM29670	84.0	132	1374	SU1-A
50	3600	160Z	200	7271	H	140	268	SD2S50Z6006YEH3	LM29671	84.0	143	1567	SU1-A
	3600	160Z	230/460	7271	H	122/61	250/125	SD2S50Z61YEH3	LM29672	84.0	143	1567	SU1-A
	3600	160Z	575	7271	H	48.8	100	SD2S50Z65YEH3	LM29673	84.0	143	1567	SU1-A



L32 BRACKET CONVERSION KIT

Applications:

Used to adapt the Lincoln Submersible Elevator motors to some IMO and Alweiler Pumps. Kit includes needed through bolts to mount this kit to a Lincoln Submersible Elevator Motor.

Catalog Number	Disc. Sym	App. Wgt (lbs)	List Price
LM31777	A	12	\$460

Items in red are STOCK items.



HYDRAULIC ELEVATOR PUMP MOTORS

OPEN DRIP-PROOF CONSTRUCTION • 3-PHASE
FOOT MOUNTED
10 TO 100 HP

Features:

- Dual Rated Nameplates for 80 & 120 Starts/Hour
- Designed for Belt Driven Pumps
- Wye Start/Delta Run
- Class F Insulated
- 40° C Ambient
- F-1 Mounting
- Ball Bearings with Grease Fittings and Automatic Relief
- NEMA Dimensions
- CSA Approved, UL Recognized
- Constructed for low noise and low vibration.
- Made in USA



Applications:

Hydraulic pump passenger, service, freight, and dumbwaiter low rise elevators. Typically hydraulic elevators travel up to 6 floors at speeds up to 200 fpm.

80 STARTS PER HOUR

HP	SYN RPM	Frame	Volts	80 Starts FL Amps	Locked Rotor Amps	Model Number	Product Number	Notes (see page 306)	Approx Shpg Wght (lbs)	List Price	Mult Sym
15	3600	213T	200	41	187	SSD2P10/15T6006YEH2	LM30091		114	\$1006	HP1-A
	3600	213T	230/460	35.5/18	162/81	SSD2P10/15T61YEH2	LM30092		149	1006	HP1-A
	1800	215T	200	45.1	170	SSD4G10/15T6006YEH2	LM28867		128	924	HP1-A
	1800	215T	230/460	39.2/19.6	148/74	SSD4G10/15T61YEH2	LM28868		124	924	HP1-A
	1800	215T	575	15.7	59.2	SSD4P10/15T65YEH2	LM28869		128	924	HP1-A
20	3600	215T	200	53	267	SSD2P15/20T6006YEH2	LM30093		135	1315	HP1-A
	3600	215T	230/460	46/23	232/116	SSD2P15/20T61YEH2	LM30094		138	1315	HP1-A
	1800	254T	200	59.1	267	SSD4G15/20T6006YEH2	LM28873		203	1260	HP1-A
	1800	254T	230/460	51.4/25.7	232/116	SSD4G15/20T61YEH2	LM28874		205	1260	HP1-A
	1800	254T	575	20.6	93	SSD4P15/20T65YEH2	LM28875		203	1260	HP1-A
25	3600	254T	200	66.5	334	SSD2P20/25T6006YEH2	LM30095		128	1667	HP1-A
	3600	254T	230/460	58/29	290/145	SSD2P20/25T61YEH2	LM30096		134	1667	HP1-A
	1800	256T	200	73.6	368	SSD4G20/25T6006YEH2	LM28879		105	1593	HP1-A
	1800	256T	230/460	64/32	320/160	SSD4G20/25T61YEH2	LM28880		233	1593	HP1-A
	1800	256T	575	25.6	128	SSD4P20/25T65YEH2	LM28881		233	1593	HP1-A
30	3600	256T	200	80	419	SSD2P25/30T6006YEH2	LM30097		235	2005	HP1-A
	3600	256T	230/460	69/34.5	364/182	SSD2P25/30T61YEH2	LM30098		235	2005	HP1-A
	1800	284T	200	84	391	CCD4G25/30T6006YEH2	LM29850		300	2105	HP1-A
	1800	284T	230/460	73/36.5	340/170	CCD4G25/30T61YEH2	LM29851		316	2105	HP1-A
	1800	284T	575	29.2	136	CCD4G25/30T65YEH2	LM29854		300	2105	HP1-A
40	3600	284T	200	112	460	CCD2P30/40T6006YEH2	LM30099		320	2582	HP1-A
	3600	284T	230/460	97/48.5	400/200	CCD2P30/40T61YEH2	LM30100		279	2582	HP1-A
	1800	286T	200	112	495	CCD4G30/40T6006YEH2	LM29852		450	2441	HP1-A
	1800	286T	230/460	97/48.5	430/215	CCD4G30/40T61YEH2	LM29853		411	2441	HP1-A
	1800	286T	575	38.8	172	CCD4G30/40T65YEH2	LM29855		653	2441	HP1-A
50	3600	286T	200	135	667	CCD2P40/50T6006YEH2	LM30101		460	3298	HP1-A
	3600	286T	230/460	117/58.5	580/290	CCD2P40/50T61YEH2	LM30102		277	3298	HP1-A
	1800	324T	200	145	630	SD4G40/50T6006YEH2	LM28897		550	3267	HP1-A
	1800	324T	230/460	126/63	548/274	SD4G40/50T61YEH2	LM28898		466	3267	HP1-A
	1800	324T	575	50.5	220	SD4G40/50T65YEH2	LM28899		550	3267	HP1-A
60	1800	326T	200	176	794	SD4G50/60T6006YEH2	LM28903		519	3629	HP1-A
	1800	326T	230/460	153/76.5	690/345	SD4G50/60T61YEH2	LM28904		530	3629	HP1-A
	1800	326T	575	61	276	SD4G50/60T65YEH2	LM28905		519	3629	HP1-A
75	1800	364T	200	206	1000	SD4G60/75T6006YEH2	LM28909		693	4493	HP1-A
	1800	364T	230/460	179/89.5	870/435	SD4S60/75T61YEH2	LM28910		709	4493	HP1-A
	1800	364T	575	71.5	350	SD4G60/75T65YEH2	LM28911		709	4493	HP1-A
100	1800	365T	230/460	250/125	1084/542	SD4G75/100T61YEH2	LM28914		754	4705	HP1-A
	1800	365T	575	100	435	SD4P75/100T65YEH2	LM28915		754	4705	HP1-A

Prices and data subject to change without notice.

SHADED FRAME INDICATES CAST IRON CONSTRUCTION

Items in red are STOCK items.

HYDRAULIC ELEVATOR PUMP MOTORS

OPEN DRIP-PROOF CONSTRUCTION • 3-PHASE
FOOT MOUNTED
10 TO 100 HP



WYE WOUND FOR ELECTRONIC START OR ACROSS THE LINE STARTING • 80 STARTS PER HOUR

HP	SYN RPM	Frame	Volts	80 Starts FL Amps	Locked Rotor Amps	Model Number	Product Number	Notes (see page 306)	Approx Shpg Wght (lbs)	List Price	Mult Sym
5	1800	182T	200	15	73.6	SSD4P5T6006YEH1	LM28918		68	\$472	HP1-A
	1800	182T	230/460	13/6.5	64/32	SSD4P5T61YEH1	LM28919		89	472	HP1-A
	1800	182T	575	5.2	25.6	SSD4P5T65YEH1	LM28920		79	472	HP1-A
7 1/2	1800	182T	200	22.8	106	SSD4G7.5T6006EH1	LM28921		98	531	HP1-A
	1800	182T	230/460	19.8/9.9	92/46	SSD4G7.5T61EH1	LM28922		61	531	HP1-A
	1800	182T	575	7.9	36.8	SSD4P7.5T65YEH1	LM28923		118	531	HP1-A
10	1800	182T	200	29.7	146	SSD4G10T6006EH1	LM28924		112	783	HP1-A
	1800	182T	230/460	25.8/12.9	127/63.5	SSD4G10T61EH1	LM28925		84	783	HP1-A
	1800	182T	575	10.3	50.8	SSD4P10T65YEH1	LM28926		123	783	HP1-A

120 STARTS PER HOUR

HP	SYN RPM	Frame	Volts	120 Starts FL Amps	Locked Rotor Amps	Model Number	Product Number	Notes (see page 306)	Approx Shpg Wght (lbs)	List Price	Mult Sym
10	3600	213T	200	27	187	SSD2P10/15T6006YEH2	LM30091		114	\$1006	HP1-A
	3600	213T	230/460	23.4/11.7	162/81	SSD2P10/15T61YEH2	LM30092		149	1006	HP1-A
1800	215T	200	28.8	170	SSD4G10/15T6006YEH2	LM28867		128	924	HP1-A	
	1800	215T	230/460	25/12.5	148/74	SSD4G10/15T61YEH2	LM28868		124	924	HP1-A
	1800	215T	575	10	59.2	SSD4P10/15T65YEH2	LM28869		128	924	HP1-A
15	3600	215T	200	39	267	SSD2P15/20T6006YEH2	LM30093		135	1315	HP1-A
	3600	215T	230/460	34/17	232/116	SSD2P15/20T61YEH2	LM30094		138	1315	HP1-A
1800	254T	200	44.2	267	SSD4G15/20T6006YEH2	LM28873		203	1260	HP1-A	
	1800	254T	230/460	38.4/19.2	232/116	SSD4G15/20T61YEH2	LM28874		205	1260	HP1-A
	1800	254T	575	15.4	93	SSD4P15/20T65YEH2	LM28875		203	1260	HP1-A
20	3600	254T	200	53	334	SSD2P20/25T6006YEH2	LM30095		128	1667	HP1-A
	3600	254T	230/460	46/23	290/145	SSD2P20/25T61YEH2	LM30096		134	1667	HP1-A
1800	256T	200	59.6	368	SSD4G20/25T6006YEH2	LM28879		105	1593	HP1-A	
	1800	256T	230/460	52/26	320/160	SSD4G20/25T61YEH2	LM28880		233	1593	HP1-A
	1800	256T	575	20.8	128	SSD4P20/25T65YEH2	LM28881		233	1593	HP1-A
25	3600	256T	200	66.5	419	SSD2P25/30T6006YEH2	LM30097		235	2005	HP1-A
	3600	256T	230/460	58/29	364/182	SSD2P25/30T61YEH2	LM30098		235	2005	HP1-A
1800	284T	200	70.2	391	CCD4G25/30T6006YEH2	LM29850		300	2105	HP1-A	
	1800	284T	230/460	61/30.5	340/170	CCD4G25/30T61YEH2	LM29851		316	2105	HP1-A
	1800	284T	575	24.4	136	CCD4G25/30T65YEH2	LM29854		300	2105	HP1-A
30	3600	284T	200	83	460	CCD2P30/40T6006YEH2	LM30099		320	2582	HP1-A
	3600	284T	230/460	72/36	400/200	CCD2P30/40T61YEH2	LM30100		279	2582	HP1-A
1800	286T	200	82.8	495	CCD4G30/40T6006YEH2	LM29852		450	2441	HP1-A	
	1800	286T	230/460	72/36	430/215	CCD4G30/40T61YEH2	LM29853		411	2441	HP1-A
	1800	286T	575	28.8	172	CCD4G30/40T65YEH2	LM29855		653	2441	HP1-A
40	3600	286T	200	108	667	CCD2P40/50T6006YEH2	LM30101		460	3298	HP1-A
	3600	286T	230/460	94/47	580/290	CCD2P40/50T61YEH2	LM30102		277	3298	HP1-A
1800	324T	200	118	630	SD4G40/50T6006YEH2	LM28897		550	3267	HP1-A	
	1800	324T	230/460	103/51.5	548/274	SD4G40/50T61YEH2	LM28898		466	3267	HP1-A
	1800	324T	575	41	220	SD4G40/50T65YEH2	LM28899		550	3267	HP1-A
50	1800	326T	200	150	794	SD4G50/60T6006YEH2	LM28903		519	3629	HP1-A
	1800	326T	230/460	130/65	690/345	SD4G50/60T61YEH2	LM28904		530	3629	HP1-A
	1800	326T	575	52	276	SD4G50/60T65YEH2	LM28905		51	3629	HP1-A
60	1800	364T	200	167	1000	SD4G60/75T6006YEH2	LM28909		693	4493	HP1-A
	1800	364T	230/460	146/73	870/435	SD4S60/75T61YEH2	LM28910		709	4493	HP1-A
	1800	364T	575	58	350	SD4G60/75T65YEH2	LM28911		709	4493	HP1-A
75	1800	365T	230/460	188/94	1084/542	SD4G75/100T61YEH2	LM28914		754	4705	HP1-A
	1800	365T	575	75	435	SD4P75/100T65YEH2	LM28915		754	4705	HP1-A

Prices and data subject to change without notice.

SHADED FRAME INDICATES CAST IRON CONSTRUCTION

Items in red are STOCK items.



VVVF (VARIABLE VOLTAGE VARIABLE FREQUENCY) TRACTION ELEVATOR HOIST MOTORS

3-PHASE • OPEN DRIP-PROOF CONSTRUCTION • FOOT MOUNTED • 7.5 TO 75 HP
1200 RPM & 900 RPM • HIGH ACCELERATION • 60 HZ, 40HZ & 30HZ DESIGNS

Features:

- Dynamic balanced for low vibration operation
- Normally closed thermostats, one per phase
- Low noise design
- Steel frame construction with cast iron endbells
- Class F Insulated, 40° C ambient
- Epact efficiency or better
- 1.0 Service Factor
- 1024 PPR encoder, with 1-inch shaft bore standard
- F-1 Mounting
- 1000:1 Inverter Duty capability
- Made in USA



Applications:

Designed for Geared and Gearless Traction Elevators, 100 fpm to 500 fpm operation and up to 12 or 15 floors.

FOOT MOUNTING WITH ENCODER F-1

HP	SYN RPM	No. of Poles	Frame	HZ	Volts	FL Amps	Rated Accel. Torque	Model Number	Product Number	Notes (see page 306)	Approx Shpg Wght (lbs)	List Price	Mult Sym
7 1/2	1200	6	254T	60	230/460	24/12	225%	SD6P7.5T61ET1	LM28114		221	\$2897	C
	1200	6	254T	60	200	28	225%	SD6P7.5T6006ET1	LM28115		221	2897	C
	1200	4	254T	40	230/460	19/9.5	275%	SD4P7.5T41ET1	LM28116		200	2842	C
	1200	4	254T	40	200	22	275%	SD4P7.5T4006ET1	LM28117		200	2842	C
	900	4	256T	30	230/460	19.6/9.8	275%	SD4P7.5T31ET1	LM28118		278	3156	C
	900	4	256T	30	200	23	275%	SD4P7.5T3006ET1	LM28119		278	3156	C
10	1200	6	256T	60	230/460	24/12	250%	SSD6P10T61ET1	LM28120		214	3221	C
	1200	6	256T	60	200	28	250%	SD6P10T6006ET1	LM28121		214	3221	C
	1200	4	256T	40	230/460	19/9.5	275%	SD4P10T41ET1	LM28122		232	3156	C
	1200	4	256T	40	200	22	275%	SSD4P10T4006ET1	LM28123		232	3156	C
	900	4	284T	30	230/460	19.6/9.8	330%	SD4P10T31ET1	LM28124		280	3736	C
	900	4	284T	30	200	23	330%	SD4P10T3006ET1	LM28125		280	3736	C
12 1/2	1200	6	284T	60	230/460	42/21	300%	SD6P12.5T61ET1	LM31393		338	3847	C
	1200	6	284T	60	200	48.5	300%	SD6P12.5T6006YET1	LM30676		338	3847	C
	900	4	284T	30	230/460	34/17	300%	SD4P12.5T31ET1	LM30677		365	4056	C
	900	4	284T	30	200	38.5	300%	SD4P12.5T3006ET1	LM30678		365	4056	C
15	1800	4	256T	60	230/460			SD4P15T61ET1	LM30679		233	3221	C
	1800	4	256T	60	200			SD4P15T6006ET1	LM30680		233	3221	C
	1200	6	284T	60	230/460	49/24.5	300%	SD6S15T61YET1	LM28126		341	3870	C
	1200	6	284T	60	200	56.5	300%	SD6G15T6006YET1	LM28127		338	3870	C
	1200	4	284T	40	230/460	40/20	330%	SD4P15T41ET1	LM28128		344	3736	C
	1200	4	284T	40	200	46	330%	SD4P15T4006ET1	LM28129		344	3736	C
20	900	4	286T	30	230/460	40/20	300%	SD4S15T31YET1	LM30535		392	4375	C
	900	4	286T	30	200	46	300%	SD4P15T3006ET1	LM28131		392	4375	C
	1800	4	256T	60	230/460			SD4P20T61ET1	LM30681		240	3546	C
	1800	4	256T	60	200			SD4P20T6006ET1	LM30682		240	3546	C
	1200	6	286T	60	230/460	61/30.5	275%	SD6S20T61YET1	LM28132		390	4498	C
	1200	6	286T	60	200	68	275%	SD6S20T6006YET1	LM28133		400	4498	C
25	1200	4	286T	40	230/460	52/26	330%	SD4P20T41ET1	LM28134		385	4375	C
	1200	4	286T	40	200	60	330%	SD4P20T4006ET1	LM28135		385	4375	C
	900	4	324T	30	230/460	54/27	275%	SD4P20T31ET1	LM28136		480	4985	C
	900	4	324T	30	200	62.1	275%	SD4P20T3006ET1	LM28137		471	4985	C
	1800	4	284T	60	230/460	64/32	250%	SD4P25T61ET1	LM30720		350	3870	C
	1800	4	284T	60	200	73.5	250%	SD4P25T62ET1	LM30721		350	3870	C
25	1200	6	324T	60	230/460	64/32	250%	SD6S25T61YET1	LM28138		505	5442	C
	1200	6	324T	60	200	73.6	250%	SD6P25T6006ET1	LM28139		505	5442	C
	1200	4	324T	40	230/460	65/32.5	275%	SD4P25T41ET1	LM28140		472	4985	C
	1200	4	324T	40	200	74.8	275%	SD4P25T4006ET1	LM28141		472	4985	C
	900	4	326T	30	230/460	64/32	275%	SD4P25T31ET1	LM28142		538	5662	C
	900	4	326T	30	200	73.6	275%	SD4P25T3006YET1	LM28143		525	5662	C

Prices and data subject to change without notice.

Items in red are STOCK items.

VVVF (VARIABLE VOLTAGE VARIABLE FREQUENCY) TRACTION ELEVATOR HOIST MOTORS



3-PHASE • OPEN DRIP-PROOF CONSTRUCTION • FOOT MOUNTED • 7.5 TO 75 HP
1200 RPM & 900 RPM • HIGH ACCELERATION • 60 HZ, 40HZ & 30HZ DESIGNS

FOOT MOUNTING WITH ENCODER F-1 (cont'd)

HP	SYN RPM	No. of Poles	Frame	HZ	Volts	FL Amps	Rated Accel. Torque	Model Number	Product Number	Notes (see page 306)	Approx Shpg Wght (lbs)	List Price	Mult Sym	
30	1800	4	286T	60	230/460	72/36	250%	SD4P30T61ET1	LM30722		400	\$4498	C	
	1800	4	286T	60	200	83	250%	SD4P30T62ET1	LM30723		400	4498	C	
	1200	6	326T	60	230/460	76/38	225%	SD6S30T61YET1	LM27976		535	6072	C	
	1200	6	326T	60	200	87.4	225%	SD6S30T6006YET1	LM28144		552	6072	C	
	1200	4	326T	40	230/460	74/37	275%	SD4P30T41ET1	LM28145		516	5557	C	
	1200	4	326T	40	200	85	275%	SD4P30T4006ET1	LM28146		516	5557	C	
	900	4	364T	30	230/460	74/37	275%	SD4P30T31ET1	LM28147		575	6803	C	
	900	4	364T	30	200	85	275%	SD4P30T3006ET1	LM28148		575	6803	C	
	40	1800	4	324T	60	230/460	98/49	250%	SD4P40T61ET1	LM30724		470	5151	C
		1800	4	324T	60	200	113	250%	SD4P40T62ET1	LM30725		470	5151	C
1200		6	364T	60	230/460	98/49	250%	SD6S40T61YET1	LM28149		755	7675	C	
1200		6	364T	60	200	113	250%	SD6S40T6006YET1	LM28150		755	7675	C	
1200		4	364T	40	230/460	96/48	275%	SD4P40T41ET1	LM28151		715	6803	C	
1200		4	364T	40	200	111	275%	SD4P40T4006ET1	LM28152		715	6803	C	
900		4	365T	30	230/460	97/48.5	275%	SD4P40T31ET1	LM28153		783	7577	C	
900		4	365T	30	200	112	275%	SD4P40T3006ET1	LM28154		783	7577	C	
50		1800	4	326T	60	230/460	121/60.5	250%	SD4P50T61ET1	LM30647		522	5746	C
		1800	4	326T	60	200	139	250%	SD4P50T6006ET1	LM30648		522	5746	C
	1200	6	365T	60	230/460	129/64.5	275%	SD6S50T61YET1	LM28155		800	7885	C	
	1200	6	365T	60	200	148	275%	SD6S50T6006YET1	LM28156		800	7885	C	
	1200	4	365T	40	230/460	120/60	275%	SD4P50T41ET1	LM28157		765	7577	C	
	1200	4	365T	40	200	138	275%	SD4P50T4006ET1	LM28158		765	7577	C	
	900	4	405T	30	230/460	118/59	275%	SD4P50T31ET1	LM28159		964	10072	C	
	900	4	405T	30	200	136	275%	SD4S50T3006YET1	LM28160		964	10072	C	
	60	1800	4	364T	60	230/460	140/70		SD4P60T61ET1	LM30649		715	7075	C
		1800	4	364T	60	200	161		SD4P60T6006ET1	LM30650		715	7075	C
1200		6	404T	60	230/460	167/83.5	250%	SD6P60T61YET1	LM28161		888	8917	C	
1200		6	404T	60	200	192	250%	SD6P60T6006YET1	LM28162		888	8917	C	
1200		4	404T	40	230/460	136/68		SD4P60T41ET1	LM28163		870	8561	C	
1200		4	404T	40	200	157		SD4P60T4006ET1	LM28164		870	8561	C	
900		4	444T	30	230/460	140/70	275%	SD4P60T31ET1	LM28165		1277	12187	C	
900		4	444T	30	200	161	275%	SD4P60T3006ET1	LM28166		1277	12187	C	
75		1800	4	365T	60	230/460	45.5/91		SD4P75T61ET1	LM30651		765	7885	C
		1800	4	365T	60	200	209		SD4P75T6006ET1	LM30652		765	7885	C
	1200	6	405T	60	230/460	178/89	250%	SD6P75T61YET1	LM28167		943	10500	C	
	1200	6	405T	60	200	205	250%	SD6P75T6006YET1	LM28168		943	10500	C	
	1200	4	405T	40	230/460	170/85		SD4P75T41ET1	LM28169		960	10072	C	
	1200	4	405T	40	200	196		SD4P75T4006ET1	LM28170		960	10072	C	

WITH ENCODER • F-1 CONDUIT BOX • C-FACE • NO FEET

HP	SYN RPM	No. of Poles	Frame	HZ	Volts	FL Amps	Rated Accel. Torque	Model Number	Product Number	Notes (see page 306)	Approx Shpg Wght (lbs)	List Price	Mult Sym
7 1/2	1200	6	254T	60	230/460	24/12	225%	SD6P7.5TCN61ET1	LM28200		150	\$2983	C
	1200	6	254T	60	200	28	225%	SD6P7.5TCN6006ET1	LM28201		150	2983	C
	1200	4	254T	40	230/460	19/9.5	275%	SD4P7.5TCN41ET1	LM30655		145	2926	C
	1200	4	254T	40	200	22	275%	SD4P7.5TCN4006ET1	LM30663		145	2926	C
	900	4	256T	30	230/460	19.6/9.8	275%	SD4P7.5TCN31ET1	LM28202		225	3240	C
	900	4	256T	30	200	23	275%	SD4P7.5TCN3006ET1	LM28203		225	3240	C
10	1200	6	256T	60	230/460	24/12	250%	SSD6P10TCN61ET1	LM28204		202	3306	C
	1200	6	256T	60	200	28	250%	SD6P10TCN6006ET1	LM28205		202	3306	C
	1200	4	256T	40	230/460	19/9.5	275%	SD4P10TCN41ET1	LM30732		230	3240	C
	1200	4	256T	40	200	22	275%	SD4P10TCN4006ET1	LM30733		230	3240	C
	900	4	284T	30	230/460	19.6/9.8	330%	SD4P10TCN31ET1	LM28206		355	3885	C
	900	4	284T	30	200	23	330%	SD4P10TCN3006ET1	LM28207		355	3885	C

Prices and data subject to change without notice.

Items in red are STOCK items.



VVVF (VARIABLE VOLTAGE VARIABLE FREQUENCY) TRACTION ELEVATOR HOIST MOTORS

3-PHASE • OPEN DRIP-PROOF CONSTRUCTION • FOOT MOUNTED • 7.5 TO 75 HP
1200 RPM & 900 RPM • HIGH ACCELERATION • 60 HZ, 40HZ & 30HZ DESIGNS

WITH ENCODER • F-1 CONDUIT BOX • C-FACE • NO FEET (cont'd)

HP	SYN RPM	No. of Poles	Frame	HZ	Volts	FL Amps	Rated Accel. Torque	Model Number	Product Number	Notes (see page 306)	Approx Shpg Wght (lbs)	List Price	Mult Sym
12 1/2	1200	6	284T	60	230/460	42/21	300%	SD4P12.5TCN61ET1	LM30734		305	\$3694	C
	1200	6	284T	60	200	48.5	300%	SD4P12.5TCN6006ET1	LM30735		305	3694	C
	900	4	284T	30	230/460	34/17	300%	SD4P12.5TCN3006ET1	LM30736		355	4204	C
	900	4	284T	30	200	38.5	300%	SD4P12.5TCN3006ET1	LM30737		355	4204	C
15	1800	4	256T	60	230/460			SD4P15TCN61ET1	LM30748		220	3306	C
	1800	4	256T	60	200			SD4P15TCN6006ET1	LM30749		220	3306	C
	1200	6	284T	60	230/460	49/24.5	300%	SD6P15TCN61ET1	LM28208		330	4018	C
	1200	6	284T	60	200	56.5	300%	SD6S15TCN6006YET1	LM28209		330	4018	C
	1200	4	284T	40	230/460	40/20	330%	SD4P15TCN41ET1	LM30750		355	3885	C
	1200	4	284T	40	200	46	330%	SD4P15TCN4006ET1	LM30751		355	3885	C
	900	4	286T	30	230/460	40/20	300%	SD4P15TCN31ET1	LM28210		388	4523	C
	900	4	286T	30	200	46	300%	SD4S15TCN3006ET1	LM28211		388	4523	C
20	1800	4	256T	60	230/460			SD4P20TCN61ET1	LM30752		249	3631	C
	1800	4	256T	60	200			SD4P20TCN6006ET1	LM30753		249	3631	C
	1200	6	286T	60	230/460	61/30.5	275%	SD6S20TCN61YET1	LM28212		379	4822	C
	1200	6	286T	60	200	68	275%	SD6S20TCN6006YET1	LM28213		379	4822	C
	1200	4	286T	40	230/460	52/26	330%	SD4P20TCN41ET1	LM30739		396	4523	C
	1200	4	286T	40	200	60	330%	SD4P20TCN6006ET1	LM30740		396	4523	C
	900	4	324T	30	230/460	54/27	275%	SD4P20TCN31ET1	LM28214		480	5231	C
	900	4	324T	30	200	62.1	275%	SD4S20TCN3006YET1	LM28215		480	5231	C
25	1800	4	284T	60	230/460	64/32	250%	SD4P25TCN61ET1	LM31607		355	4075	C
	1800	4	284T	60	200	73.5	250%	SD4P25TCN6006ET1	LM30760		355	4075	C
	1200	6	324T	60	230/460	64/32	250%	SD6S25TC61YET1	LM28216		499	5856	C
	1200	6	324T	60	200	73.6	250%	SD6P25TCN6006ET1	LM28217		499	5856	C
	1200	4	324T	40	230/460	65/32.5	275%	SD4P25TCN41ET1	LM30754		480	5231	C
	1200	4	324T	40	200	74.8	275%	SD4P25TCN4006ET1	LM30755		480	5231	C
	900	4	326T	30	230/460	64/32	275%	SD4P25TCN31ET1	LM28218		533	6297	C
	900	4	326T	30	200	73.6	275%	SD4P25TCN3006ET1	LM28219		533	6297	C
30	1800	4	286T	60	230/460	72/36	250%	SD4S30TCN61YET1	LM30702		397	4646	C
	1800	4	286T	60	200	83	250%	SD4P30TCN6006ET1	LM30762		397	4646	C
	1200	6	326T	60	230/460	76/38	225%	SD6S30TCN61YET1	LM27971		537	6502	C
	1200	6	326T	60	200	87.4	225%	SD6S30TCN6006YET1	LM28220		557	6502	C
	1200	4	326T	40	230/460	74/37	275%	SD4P30TCN41ET1	LM30756		532	5804	C
	1200	4	326T	40	200	85	275%	SD4P30TCN4006ET1	LM30757		532	5804	C
	900	4	364T	30	230/460	74/37	275%	SD4P30TCN31ET1	LM28221		720	7199	C
	900	4	364T	30	200	85	275%	SD4P30TCN3006ET1	LM28222		720	7199	C
40	1800	4	324T	60	230/460	98/49	250%	SD4P40TCN61ET1	LM30763		480	5398	C
	1800	4	324T	60	200	113	250%	SD4P40TCN6006ET1	LM30764		480	5398	C
	1200	6	364T	60	230/460	98/49	250%	SD6P40TCN61ET1	LM28223		724	7894	C
	1200	6	364T	60	200	113	250%	SD6P40TCN6006ET1	LM28224		724	7894	C
	1200	4	364T	40	230/460	96/48	275%	SD4P40TCN41ET1	LM30758		715	7199	C
	1200	4	364T	40	200	111	275%	SD4P40TCN4006ET1	LM30765		715	7199	C
	900	4	365T	30	230/460	97/48.5	275%	SD4P40TCN31ET1	LM28225		775	8124	C
	900	4	365T	30	200	112	275%	SD4P40TCN3006ET1	LM28226		775	8124	C
50	1800	4	326T	60	230/460	121/60.5	250%	SD4P50TCN61ET1	LM30746		532	5993	C
	1800	4	326T	60	200	139	250%	SD4P50TCN6006ET1	LM30747		532	5993	C
	1200	6	365T	60	230/460	129/64.5	275%	SD6P50TCN61ET1	LM28227		775	8282	C
	1200	6	365T	60	200	148	275%	SD6P50TCN6006ET1	LM28228		775	8282	C

Prices and data subject to change without notice.

ENCODER PIGTAIL KITS - VVVF ELEVATOR MOTORS

Applications:

Encoder Pigtail Kits are used to extend the length of the existing encoder leads.

Kit Number	Description	List Price
LM30531	30 ft. encoder cable kit	\$493
LM31752	40 ft. encoder cable kit	\$601
LM33081	50 ft. encoder cable kit	\$710

Items in red are STOCK items.