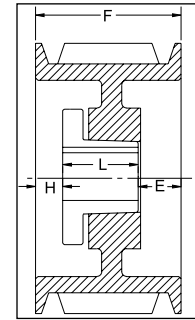


"D" SECTION

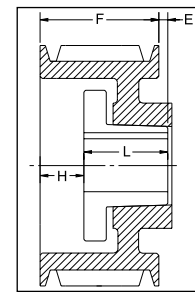
3 GROOVES

Dimensions

| Datum dia. | O.D. | Part No. | List Price | Mult. Sym. | F = 4 5/8 inches | | | | | |
|------------|------|----------|------------|------------|------------------|------|---|-------|-------|-------------------|
| | | | | | H | Type | B | L | E | Approx. Wt. (lbs) |
| 12.0 | 12.6 | 3D120 | 560.00 | QDS07 | 9/32 | 1W | F | 3 5/8 | 23/32 | 64 |
| 13.0 | 13.6 | 3D130 | 600.00 | QDS07 | 9/32 | 1W | F | 3 5/8 | 23/32 | 72 |
| 13.5 | 14.1 | 3D135 | 620.00 | QDS07 | 9/32 | 1W | F | 3 5/8 | 23/32 | 76 |
| 14.0 | 14.6 | 3D140 | 640.00 | QDS07 | 9/32 | 1W | F | 3 5/8 | 23/32 | 79 |
| 14.5 | 15.1 | 3D145 | 680.00 | QDS07 | 9/32 | 1W | F | 3 5/8 | 23/32 | 84 |
| 15.0 | 15.6 | 3D150 | 720.00 | QDS07 | 9/32 | 1W | F | 3 5/8 | 23/32 | 89 |
| 15.5 | 16.1 | 3D155 | 740.00 | QDS07 | 9/32 | 1W | F | 3 5/8 | 23/32 | 94 |
| 16.0 | 16.6 | 3D160 | 760.00 | QDS07 | 9/32 | 1A | F | 3 5/8 | 23/32 | 95 |
| 18.0 | 18.6 | 3D180 | 800.00 | QDS07 | 7/32 | 6A | J | 4 1/2 | 11/32 | 115 |
| 22.0 | 22.6 | 3D220 | 960.00 | QDS07 | 7/32 | 6A | J | 4 1/2 | 11/32 | 135 |
| 27.0 | 27.6 | 3D270 | 1160.00 | QDS07 | 7/32 | 6A | J | 4 1/2 | 11/32 | 170 |
| 33.0 | 33.6 | 3D330 | 1640.00 | QDS07 | 7/32 | 6A | J | 4 1/2 | 11/32 | 215 |
| 40.0 | 40.6 | 3D400 | 2040.00 | QDS07 | 7/32 | 6A | J | 4 1/2 | 11/32 | 275 |



TYPE 1

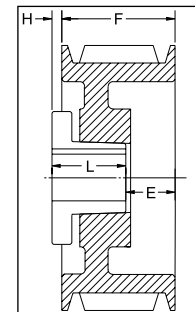


TYPE 2

4 GROOVES

Dimensions

| Datum dia. | O.D. | Part No. | List Price | Mult. Sym. | F = 6 1/16 inches | | | | | |
|------------|------|----------|------------|------------|-------------------|------|----|-------|---------|-------------------|
| | | | | | H | Type | B | L | E | Approx. Wt. (lbs) |
| 12.0 | 12.6 | 4D120 | 600.00 | QDS07 | 1 3/32 | 1W | F | 3 5/8 | 1 11/32 | 77 |
| 13.0 | 13.6 | 4D130 | 640.00 | QDS07 | 1 3/32 | 1W | F | 3 5/8 | 1 11/32 | 85 |
| 13.5 | 14.1 | 4D135 | 660.00 | QDS07 | 1 3/32 | 1W | F | 3 5/8 | 1 11/32 | 90 |
| 14.0 | 14.6 | 4D140 | 680.00 | QDS07 | 1 3/32 | 1W | F | 3 5/8 | 1 11/32 | 95 |
| 14.5 | 15.1 | 4D145 | 780.00 | QDS07 | 1 3/32 | 1W | F | 3 5/8 | 1 11/32 | 100 |
| 15.0 | 15.6 | 4D150 | 800.00 | QDS07 | 1 3/32 | 1W | F | 3 5/8 | 1 11/32 | 107 |
| 15.5 | 16.1 | 4D155 | 820.00 | QDS07 | 1 3/32 | 1W | F | 3 5/8 | 1 11/32 | 112 |
| 16.0 | 16.6 | 4D160 | 840.00 | QDS07 | 1 3/32 | 1A | F | 3 5/8 | 1 11/32 | 110 |
| 17.0 | 17.6 | 4D170 | 940.00 | QDS07 | 1 5/32 | 1A | J | 4 1/2 | 13/32 | 127 |
| 18.0 | 18.6 | 4D180 | 960.00 | QDS07 | 1 5/32 | 1A | J | 4 1/2 | 13/32 | 131 |
| 20.0 | 20.6 | 4D200 | 980.00 | QDS07 | 1 5/32 | 1A | J | 4 1/2 | 13/32 | 145 |
| 22.0 | 22.6 | 4D220 | 1000.00 | QDS07 | 5/32 | 1A | J | 4 1/2 | 1 13/32 | 160 |
| 27.0 | 27.6 | 4D270 | 1280.00 | QDS07 | 5/32 | 1A | J | 4 1/2 | 1 13/32 | 200 |
| 33.0 | 33.6 | 4D330 | 2120.00 | QDS07 | 9/32 | 2A | M° | 6 3/4 | 31/32 | 285 |
| 40.0 | 40.6 | 4D400 | 2240.00 | QDS07 | 9/32 | 2A | M° | 6 3/4 | 31/32 | 375 |



TYPE 6

P.D. for "D" Belts = O.D.

*Note: M-N-P-W bushings are standard mounting only with these parts.

Type of sheave "T": A = arms; B = block; W = web