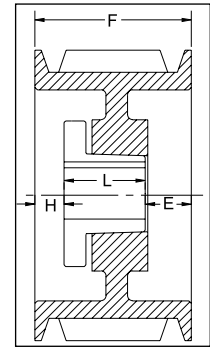
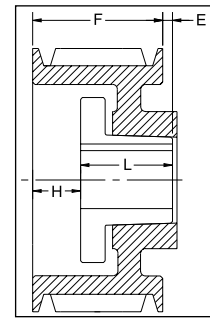


### "C" SECTION 6 GROOVES Dimensions

Datum dia.	O.D.	Part No.	List Price	Mult. Sym.	F = 6 3/8 inches					Approx. Wt. (lbs)
					H	Type	B	L	E	
6.0	6.4	6C60	244.00	QDS06	1 1/16	1B	SF	2	3 5/16	24
7.0	7.4	6C70	248.00	QDS06	1 1/8	1B	SF	2	3 1/4	26
7.5	7.9	6C75	264.00	QDS06	1 1/8	1B	SF	2	3 1/4	29
8.0	8.4	6C80	280.00	QDS06	1 5/16	1B	E	2 5/8	2 7/16	31
8.5	8.9	6C85	288.00	QDS06	1 5/16	1B	E	2 5/8	2 7/16	35
9.0	9.4	6C90	296.00	QDS06	1 7/32	1B	F	3 5/8	1 17/32	44
9.5	9.9	6C95	316.00	QDS06	1 7/32	1B	F	3 5/8	1 17/32	49
10.0	10.4	6C100	328.00	QDS06	1 7/32	1B	F	3 5/8	1 17/32	56
10.5	10.9	6C105	336.00	QDS06	1 7/32	1B	F	3 5/8	1 17/32	56
11.0	11.4	6C110	356.00	QDS06	1 7/32	1W	F	3 5/8	1 17/32	59
12.0	12.4	6C120	400.00	QDS06	1 7/32	1W	F	3 5/8	1 17/32	66
13.0	13.4	6C130	444.00	QDS06	1 7/32	1A	F	3 5/8	1 17/32	66
14.0	14.4	6C140	480.00	QDS06	1 7/32	1A	F	3 5/8	1 17/32	75
16.0	16.4	6C160	520.00	QDS06	1 7/32	1A	F	3 5/8	1 17/32	86
18.0	18.4	6C180	560.00	QDS06	1 7/32	1A	F	3 5/8	1 17/32	100
20.0	20.4	6C200	620.00	QDS06	23/32	1A	F	3 5/8	2 1/32	119
24.0	24.4	6C240	720.00	QDS06	23/32	1A	F	3 5/8	2 1/32	141
27.0	27.4	6C270	880.00	QDS06	5/32	1A	J	4 1/2	1 23/32	173
30.0	30.4	6C300	1040.00	QDS06	5/32	1A	J	4 1/2	1 23/32	189
36.0	36.4	6C360	1300.00	QDS07	7/32	1A	J	4 1/2	1 21/32	240
44.0	44.4	6C440	2040.00	QDS07	7/32	1A	J	4 1/2	1 21/32	290
50.0	50.4	6C500	2680.00	QDS07	11/32	2A	M°	6 3/4	23/32	430



TYPE 1



TYPE 2

### 8 GROOVES Dimensions

Datum dia.	O.D.	Part No.	List Price	Mult. Sym.	F = 8 3/8 inches					Approx. Wt. (lbs)
					H	Type	B	L	E	
7.0	7.4	8C70	320.00	QDS07	2 13/32	1B	SF	2	3 31/32	34
7.5	7.9	-	-	QDS07	-	-	-	-	-	-
8.0	8.4	8C80	390.00	QDS07	2 3/16	1B	E	2 5/8	3 9/16	38.7
8.5	8.9	8C85	400.00	QDS07	2 3/16	1B	E	2 5/8	3 9/16	44
9.0	9.4	8C90	410.00	QDS07	2 3/32	1B	F	3 5/8	2 21/32	52.7
9.5	9.9	8C95	420.00	QDS07	2 3/32	1B	F	3 5/8	2 21/32	56
10.0	10.4	8C100	430.00	QDS07	2 3/32	1B	F	3 5/8	2 21/32	62
10.5	10.9	8C105	450.00	QDS07	2 3/32	1B	F	3 5/8	2 21/32	72
11.0	11.4	8C110	480.00	QDS07	2 3/32	1B	F	3 5/8	2 21/32	80
12.0	12.4	8C120	520.00	QDS07	2 3/32	1B	F	3 5/8	2 21/32	94
13.0	13.4	8C130	560.00	QDS07	2 3/32	1W	F	3 5/8	2 21/32	97
14.0	14.4	8C140	650.00	QDS07	2 3/32	1A	F	3 5/8	2 21/32	96
16.0	16.4	8C160	740.00	QDS07	2 3/32	1A	F	3 5/8	2 21/32	111
18.0	18.4	8C180	860.00	QDS07	2 3/32	1A	F	3 5/8	2 21/32	129
20.0	20.4	8C200	870.00	QDS07	5/32	1A	J	4 1/2	3 23/32	158
24.0	24.4	8C240	1020.00	QDS07	5/32	1A	J	4 1/2	3 23/32	173
27.0	27.4	8C270	1120.00	QDS07	5/32	1A	J	4 1/2	3 23/32	226
30.0	30.4	8C300	1280.00	QDS07	5/32	1A	J	4 1/2	3 23/32	272
36.0	36.4	8C360	1600.00	QDS07	9/32	1A	M°	6 3/4	1 11/32	370
44.0	44.4	8C440	2560.00	QDS07	9/32	1A	M°	6 3/4	1 11/32	479
50.0	50.4	8C500	3000.00	QDS07	9/32	1A	M°	6 3/4	1 11/32	570

P.D. for "C" Belts = O.D. Type of sheave "T": A = arms; B = block; W = web

\*Note: M-N-P-W bushings are standard mounting only with these parts.

For more details and additional products, see complete Baldor•Maska® Product Catalog or [www.maskapulleys.com](http://www.maskapulleys.com)