

“A/B” COMBINATION

2 GROOVES

Dimensions

| Datum dia. | | O.D. | Part No. | List Price | Mult. Sym. | F = 1 3/4 inches | | | | | |
|-------------|-------------|-------|--------------------------|------------|------------|------------------|------|-----|--------|-------|-------------------|
| A(4L) Belts | B(5L) Belts | | | | | H | Type | B | L | E | Approx. Wt. (lbs) |
| 3.0 | 3.4 | 3.75 | 2B34^{1*} | 38.00 | QDS05 | 5/8 | 11B | SH | 1 1/4 | 1 1/8 | 2 |
| 3.2 | 3.6 | 3.95 | 2B36² | 40.00 | QDS05 | 15/32 | 6B | SH | 1 1/4 | 31/32 | 3 |
| 3.4 | 3.8 | 4.15 | 2B38² | 42.00 | QDS05 | 15/32 | 6B | SH | 1 1/4 | 31/32 | 3 |
| 3.6 | 4.0 | 4.35 | 2B40² | 44.00 | QDS05 | 15/32 | 6B | SH | 1 1/4 | 31/32 | 3 |
| 3.8 | 4.2 | 4.55 | 2B42[*] | 46.00 | QDS05 | 1/16 | 1B | SH | 1 1/4 | 7/16 | 3 |
| 4.0 | 4.4 | 4.75 | 2B44 | 48.00 | QDS05 | 1/16 | 1B | SH | 1 1/4 | 7/16 | 4 |
| 4.2 | 4.6 | 4.95 | 2B46[*] | 50.00 | QDS05 | 0 | 4B | SDS | 1 5/16 | 7/16 | 4 |
| 4.4 | 4.8 | 5.15 | 2B48 | 52.00 | QDS05 | 0 | 4B | SDS | 1 5/16 | 7/16 | 4 |
| 4.6 | 5.0 | 5.35 | 2B50 | 54.00 | QDS05 | 0 | 4B | SDS | 1 5/16 | 7/16 | 5 |
| 4.8 | 5.2 | 5.55 | 2B52 | 56.00 | QDS05 | 0 | 4B | SDS | 1 5/16 | 7/16 | 5 |
| 5.0 | 5.4 | 5.75 | 2B54 | 58.00 | QDS05 | 0 | 4B | SDS | 1 5/16 | 7/16 | 6 |
| 5.2 | 5.6 | 5.95 | 2B56 | 60.00 | QDS05 | 0 | 4B | SDS | 1 5/16 | 7/16 | 6 |
| 5.4 | 5.8 | 6.15 | 2B58 | 62.00 | QDS05 | 0 | 4W | SDS | 1 5/16 | 7/16 | 6 |
| 5.6 | 6.0 | 6.35 | 2B60 | 64.00 | QDS05 | 0 | 4W | SDS | 1 5/16 | 7/16 | 6 |
| 5.8 | 6.2 | 6.55 | 2B62 | 66.00 | QDS05 | 0 | 4W | SDS | 1 5/16 | 7/16 | 7 |
| 6.0 | 6.4 | 6.75 | 2B64 | 68.00 | QDS05 | 0 | 4W | SDS | 1 5/16 | 7/16 | 7 |
| 6.2 | 6.6 | 6.95 | 2B66 | 69.00 | QDS05 | 0 | 4W | SDS | 1 5/16 | 7/16 | 8 |
| 6.4 | 6.8 | 7.15 | 2B68 | 71.00 | QDS05 | 0 | 4W | SDS | 1 5/16 | 7/16 | 8 |
| 6.6 | 7.0 | 7.35 | 2B70 | 72.00 | QDS05 | 3/8 | 6W | SK | 1 7/8 | 1/4 | 9 |
| 7.0 | 7.4 | 7.75 | 2B74 | 73.00 | QDS05 | 3/8 | 6W | SK | 1 7/8 | 1/4 | 10 |
| 7.6 | 8.0 | 8.35 | 2B80 | 74.00 | QDS05 | 3/8 | 6W | SK | 1 7/8 | 1/4 | 11 |
| 8.2 | 8.6 | 8.95 | 2B86 | 76.00 | QDS05 | 3/8 | 6A | SK | 1 7/8 | 1/4 | 12 |
| 8.6 | 9.0 | 9.35 | 2B90 | 77.00 | QDS05 | 3/8 | 6A | SK | 1 7/8 | 1/4 | 12 |
| 9.0 | 9.4 | 9.75 | 2B94 | 78.00 | QDS05 | 3/8 | 6A | SK | 1 7/8 | 1/4 | 13 |
| 10.6 | 11.0 | 11.35 | 2B110 | 92.00 | QDS05 | 3/8 | 6A | SK | 1 7/8 | 1/4 | 15 |
| 12.0 | 12.4 | 12.75 | 2B124 | 100.00 | QDS05 | 9/16 | 6A | SK | 1 7/8 | 7/16 | 18 |
| 13.2 | 13.6 | 13.95 | 2B136 | 120.00 | QDS05 | 3/8 | 6A | SK | 1 7/8 | 1/4 | 24 |
| 15.0 | 15.4 | 15.75 | 2B154 | 168.00 | QDS05 | 3/8 | 6A | SK | 1 7/8 | 1/4 | 25 |
| 15.6 | 16.0 | 16.35 | 2B160 | 178.00 | QDS05 | 3/8 | 6A | SK | 1 7/8 | 1/4 | 27.4 |
| 18.0 | 18.4 | 18.75 | 2B184 | 224.00 | QDS05 | 3/8 | 6A | SK | 1 7/8 | 1/4 | 38 |
| 19.6 | 20.0 | 20.35 | 2B200 | 260.00 | QDS05 | 11/16 | 6A | SF | 2 | 7/16 | 47 |
| 24.6 | 25.0 | 25.35 | 2B250 | 396.00 | QDS05 | 3/8 | 6A | SF | 2 | 1/8 | 60 |
| 29.6 | 30.0 | 30.35 | 2B300 | 440.00 | QDS05 | 7/16 | 6A | SF | 2 | 3/16 | 75 |
| 37.6 | 38.0 | 38.35 | 2B380 | 840.00 | QDS05 | 11/32 | 6A | SF | 2 | 3/32 | 100 |

P.D. for “A” (4L) Belts = Datum Dia. + .35” = O.D. - .40

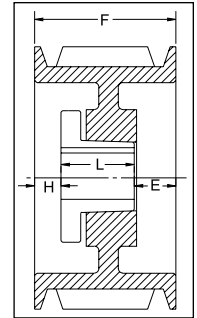
P.D. for “B” (5L) Belts = O.D.

¹ Reverse mount only.

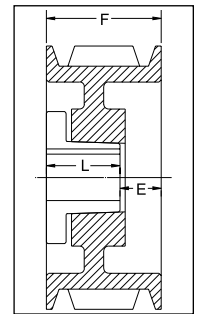
² This sheave can only be reverse mounted with standard bushing bolts. Specials bolts (not provided by Baldor) are required for standard mount.

* Mounting bolts are supplied by Baldor with these parts.

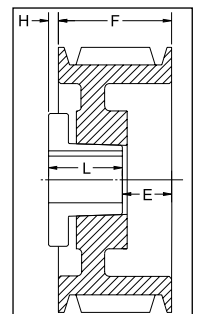
Type of sheave “T”: A = arms; B = block; W = web



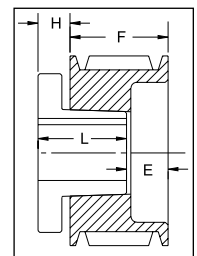
TYPE 1



TYPE 4



TYPE 6



TYPE 11