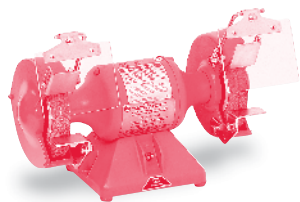
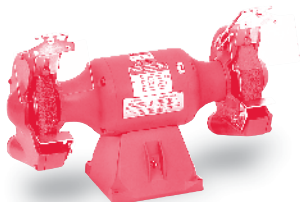


### Big Red Grinders

Big Red Grinders are available with 6", 7" or 8" wheels, equipped with base mounted on/off switch and 8 foot cord with plug. Rubber mounting feet help minimize vibration. Models ending in "E" have exhaust type wheel guards.



**600RE**



**812RE**

Hp	RPM	Wheel Size	Catalog Number	List Price	Mult. Sym.	Shpg. Wgt.	Voltage	Style	Agency Approval	Notes
1/3	3600	6"x3/4"x1/2"	<b>600RE</b>	259	G1	29	115	Grinder	UL	a,c
1/3	3600	6"x3/4"x1/2"	<b>602RE</b>	259	G1	27	115	Grinder/Buffer	UL	b,c
1/3	3600	6"x3/4"x1/2"	<b>612R</b>	293	G1	30	115	Grinder	UL,CSA	a,c,f
1/3	3600	6"x3/4"x1/2"	<b>662R</b>	293	G1	29	115	Grinder/Buffer	UL,CSA	b,c,f
1/2	3600	7"x1"x5/8"	<b>712R</b>	434	G1	44	115/230	Grinder	UL,CSA	a,c,f
1/2	3600	7"x1"x5/8"	<b>762R</b>	434	G1	43	115/230	Grinder/Buffer	UL,CSA	b,c,f
1/2	3600	7"x1"x5/8"	<b>712RE</b>	511	G1	68	115/230	Grinder	UL,CSA	a,c
1/2	3600	7"x1"x5/8"	<b>762RE</b>	511	G1	67	115/230	Grinder/Buffer	UL,CSA	b,c
3/4	3600	8"x1"x3/4"	<b>812RE</b>	851	G1	99	115/230	Grinder	UL	a,c,g
3/4	3600	8"x1"x3/4"	<b>862RE</b>	851	G1	95	115/230	Grinder/Buffer	UL	a,c,g

### Big Red Accessories

#### Pedestals

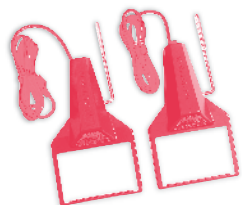


**GA16R**

**GA14R**

Catalog Number	Description	List Price	Mult. Sym.	Shpg. Wgt.
<b>GA16R</b>	Cast iron pedestal can be used on all Big Red Grinders Height is 32-7/8"	406	A8	62
<b>GA16RE</b>	Light industrial version, all steel construction for use on 6" & 7" only, height is 34"	264	A8	36
<b>GA20RE</b>	Light industrial version, all steel construction for use on 8" only, height is 34"	306	A8	54
<b>GA14R</b>	Fabricated steel pedestal with storage shelves can be used on all Big Red Grinders, height is 34-1/2"	306	A8	64
<b>GA9R</b>	2) Lighted eyeshield, 5-1/2" x 3-3/4" viewing area, 8-ft cord with plug, mounts to any Big Red Grinder	171	A8	5
<b>GA9SR</b>	2) Lighted eyeshield with on/off switch, 5-1/2" x 3-3/4" viewing area, 8-ft cord with plug, mounts to any Big Red Grinder	190	A8	5

#### Lighted Eyeshields



**GA9R**

**GA9SR**

#### NOTES:

- (a) Supplied with 36 & 60 grit wheels.
- (b) Supplied with 36 grit and 0.014 wire wheel.
- (c) Stamp steel tool rests.
- (d) Cast iron tool rests.
- (f) Non-exhaust type wheel guards.
- (g) Factory connected for 115 volts, power cord supplied.

Gearmotors and Gear Products

PT Components

Motor Accessories

Grinders

Generators

Servo Motors and Controls

Mod Express

Baldor Education Workshops

Classifications and Sales Offices

EISA Compliance Table & Index