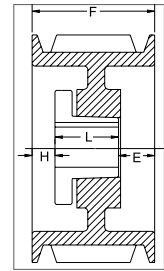


3V SECTION

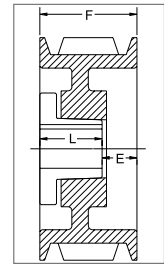
3 GROOVES

Dimensions

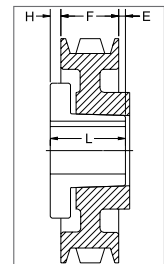
O.D.	Datum dia.	Part No.	List Price	Mult. Sym.	F = 1 1/2 inches					Approx. Wt. (lbs)
					H	Type	B	L	E	
2.65	2.60	3-3V2.65 ²	36.80	QDS08	25/64	6B	JA	1	57/64	1.1
2.80	2.75	3-3V2.80 ²	37.60	QDS08	25/64	6B	JA	1	57/64	1.3
3.00	2.95	+3-3V3.00 ^{1*}	38.80	QDS08	1 1/32	10B	SH	1 1/4	1 9/32	1.6
3.15	3.10	+3-3V3.15 ^{1*}	40.00	QDS08	1	10B	SH	1 1/4	1 1/4	2.0
3.35	3.30	3-3V3.35 ²	41.20	QDS08	9/16	6B	SH	1 1/4	13/16	1.8
3.65	3.60	3-3V3.65 ²	42.40	QDS08	9/16	6B	SH	1 1/4	13/16	2.4
4.12	4.07	3-3V4.12	44.00	QDS08	0	4B	SH	1 1/4	1/4	2.7
4.50	4.45	3-3V4.50	50.00	QDS08	0	4B	SDS	1 5/16	3/16	3.0
4.75	4.70	3-3V4.75	54.00	QDS08	0	4B	SDS	1 5/16	3/16	3.7
5.00	4.95	3-3V5.00	58.00	QDS08	0	4B	SDS	1 5/16	3/16	4.2
5.30	5.25	3-3V5.30	60.00	QDS08	0	4B	SDS	1 5/16	3/16	4.7
5.60	5.55	3-3V5.60	62.00	QDS08	0	4B	SDS	1 5/16	3/16	5.2
6.00	5.95	3-3V6.00	66.00	QDS08	0	4B	SDS	1 5/16	3/16	6.2
6.50	6.45	3-3V6.50	68.00	QDS08	0	4W	SDS	1 5/16	3/16	6.7
6.90	6.85	3-3V6.90	80.00	QDS08	0	4W	SDS	1 5/16	3/16	7.5
8.00	7.95	3-3V8.00	86.00	QDS08	5/8	6A	SK	1 7/8	1/4	9.8
10.60	10.55	3-3V10.60	126.00	QDS08	5/8	6A	SK	1 7/8	1/4	14.0
14.00	13.95	3-3V14.00	184.00	QDS08	5/8	6A	SK	1 7/8	1/4	19.4
19.00	18.95	3-3V19.00	216.00	QDS08	13/16	11A	SF	2	5/16	32.1
25.00	24.95	3-3V25.00	400.00	QDS08	13/16	11A	SF	2	5/16	38.5
33.50	33.45	3-3V33.50	720.00	QDS09	23/32	6A	SF	2	7/32	79.3



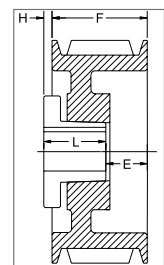
TYPE 1



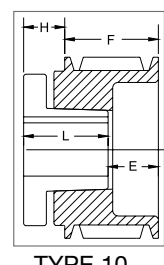
TYPE 4



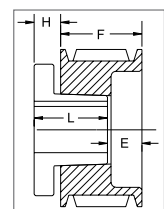
TYPE 5



TYPE 6



TYPE 10



TYPE 11

4 GROOVES

Dimensions

O.D.	Datum dia.	Part No.	List Price	Mult. Sym.	F = 1 29/32 inches					Approx. Wt. (lbs)
					H	Type	B	L	E	
2.65	2.60	4-3V2.65 ²	42.40	QDS08	25/64	6B	JA	1	1 19/64	1.4
2.80	2.75	4-3V2.80 ²	42.80	QDS08	25/64	6B	JA	1	1 19/64	1.6
3.00	2.95	4-3V3.00 ^{1*}	43.20	QDS08	1 1/32	10B	SH	1 1/4	1 11/16	2.3
3.15	3.10	4-3V3.15 ^{1*}	44.80	QDS08	1	10B	SH	1 1/4	1 21/32	2.7
3.35	3.30	4-3V3.35 ²	46.40	QDS08	1/2	6B	SH	1 1/4	1 5/32	2.3
3.65	3.60	4-3V3.65 ²	48.00	QDS08	1/2	6B	SH	1 1/4	1 5/32	3.1
4.12	4.07	4-3V4.12	50.00	QDS08	3/16	1B	SH	1 1/4	15/32	3.2
4.50	4.45	4-3V4.50	52.00	QDS08	3/16	1B	SDS	1 5/16	13/32	3.4
4.75	4.70	4-3V4.75	56.00	QDS08	1/8	1B	SDS	1 5/16	15/32	4.4
5.00	4.95	4-3V5.00	60.00	QDS08	1/8	1B	SDS	1 5/16	15/32	5.0
5.30	5.25	4-3V5.30	64.00	QDS08	1/8	1B	SDS	1 5/16	15/32	6.0
5.60	5.55	4-3V5.60	66.00	QDS08	1/8	1B	SDS	1 5/16	15/32	6.2
6.00	5.95	4-3V6.00	70.00	QDS08	1/4	6B	SK	1 7/8	9/32	7.8
6.50	6.45	4-3V6.50	72.00	QDS08	1/4	6B	SK	1 7/8	9/32	9.5
6.90	6.85	4-3V6.90	82.00	QDS08	1/4	6B	SK	1 7/8	9/32	11.1
8.00	7.95	4-3V8.00	88.00	QDS08	1/4	6A	SK	1 7/8	9/32	11.2
10.60	10.55	4-3V10.60	128.00	QDS08	1/4	6A	SK	1 7/8	9/32	16.0
14.00	13.95	4-3V14.00	196.00	QDS08	1/4	6A	SK	1 7/8	9/32	25.0
19.00	18.95	4-3V19.00	252.00	QDS08	1/16	5A	SF	2	1/32	39.8
25.00	24.95	4-3V25.00	412.00	QDS08	7/16	6A	SF	2	11/32	51.1
33.50	33.45	4-3V33.50	780.00	QDS09	25/32	6A	E	2 5/8	1/16	94.1

P.D. for "3V" Belts = O.D. +For 3-3V3.00: F=1.912" +For 3-3V3.15: F=1 7/8"

¹ Reverse mount only.

² This sheave can only be reverse mounted with standard bushing bolts.

Specials bolts (not provided by Baldor) are required for standard mount.

* Mounting bolts are supplied by Baldor with these parts.

Type of sheave "T": A = arms; B = block; W = web

