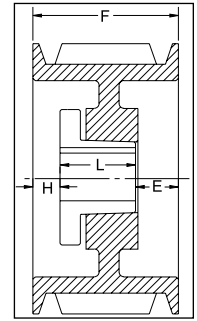


### 8V SECTION

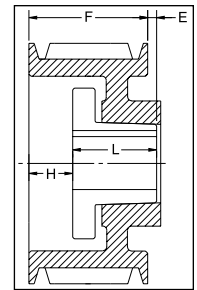
#### 4 GROOVES

##### Dimensions

O.D.	Datum dia.	Part No.	List Price	Mult. Sym.	F = 4 7/8 inches					
					H	Type	B	L	E	Approx. Wt. (lbs)
12.5	12.3	<b>4-8V12.50</b>	544.00	QDS10	1/32	6W	F	3 5/8	1 9/32	56
13.2	13.0	<b>4-8V13.20</b>	552.00	QDS10	1/32	6W	F	3 5/8	1 9/32	63
14.0	13.8	<b>4-8V14.00</b>	560.00	QDS10	1/32	6W	F	3 5/8	1 9/32	65
15.0	14.8	<b>4-8V15.00</b>	596.00	QDS10	1/32	6W	F	3 5/8	1 9/32	72
16.0	15.8	<b>4-8V16.00</b>	660.00	QDS10	1/32	6A	F	3 5/8	1 9/32	80
17.0	16.8	<b>4-8V17.00</b>	720.00	QDS10	1/32	1A	F	3 5/8	1 7/32	93
18.0	17.8	<b>4-8V18.00</b>	760.00	QDS10	1/32	1A	F	3 5/8	1 7/32	105
19.0	18.8	<b>4-8V19.00</b>	790.00	QDS10	1/32	6A	F	3 5/8	1 9/32	113
20.0	19.8	<b>4-8V20.00</b>	820.00	QDS10	3/32	1A	J	4 1/2	9/32	125
21.2	21.0	<b>4-8V21.20</b>	840.00	QDS10	3/32	1A	J	4 1/2	9/32	131
22.4	22.2	<b>4-8V22.40</b>	886.00	QDS10	3/32	1A	J	4 1/2	9/32	150
24.8	24.6	<b>4-8V24.80</b>	1190.00	QDS10	27/32	5A	M°	6 3/4	1 1/32	247
30.0	29.8	<b>4-8V30.00</b>	1350.00	QDS10	27/32	5A	M°	6 3/4	1 1/32	230
35.5	35.3	<b>4-8V35.50</b>	1790.00	QDS10	27/32	5A	M°	6 3/4	1 1/32	329
40.0	39.8	<b>4-8V40.00</b>	1970.00	QDS10	27/32	5A	M°	6 3/4	1 1/32	325
44.5	44.3	<b>4-8V44.50</b>	2590.00	QDS10	27/32	5A	M°	6 3/4	1 1/32	434
53.0	52.8	<b>4-8V53.00</b>	3240.00	QDS10	27/32	5A	M°	6 3/4	1 1/32	425



TYPE 1

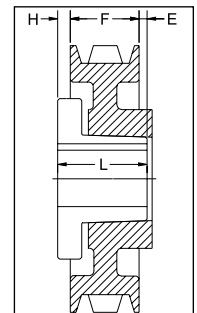


TYPE 2

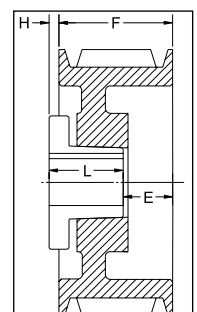
### 5 GROOVES

##### Dimensions

O.D.	Datum dia.	Part No.	List Price	Mult. Sym.	F = 6 inches					
					H	Type	B	L	E	Approx. Wt. (lbs)
12.5	12.3	<b>5-8V12.50</b>	588.00	QDS10	1 1/16	1W	F	3 5/8	1 5/16	64
13.2	13.0	<b>5-8V13.20</b>	618.00	QDS10	1 1/16	1W	F	3 5/8	1 5/16	75
14.0	13.8	<b>5-8V14.00</b>	660.00	QDS10	1 1/16	1W	F	3 5/8	1 5/16	77
15.0	14.8	<b>5-8V15.00</b>	700.00	QDS10	1 3/32	1W	F	3 5/8	1 9/32	87
16.0	15.8	<b>5-8V16.00</b>	740.00	QDS10	1 3/32	1A	F	3 5/8	1 9/32	93
17.0	16.8	<b>5-8V17.00</b>	846.00	QDS10	19/32	1A	J	4 1/2	29/32	105
18.0	17.8	<b>5-8V18.00</b>	900.00	QDS10	19/32	1A	J	4 1/2	29/32	117
19.0	18.8	<b>5-8V19.00</b>	960.00	QDS10	19/32	1A	J	4 1/2	29/32	126
20.0	19.8	<b>5-8V20.00</b>	990.00	QDS10	19/32	1A	J	4 1/2	29/32	135
21.2	21.0	<b>5-8V21.20</b>	1150.00	QDS10	19/32	1A	J	4 1/2	29/32	160
22.4	22.2	<b>5-8V22.40</b>	1310.00	QDS10	9/32	2A	M°	6 3/4	1 1/32	188
24.8	24.6	<b>5-8V24.80</b>	1390.00	QDS10	5/16	2A	M°	6 3/4	1 1/16	266
30.0	29.8	<b>5-8V30.00</b>	1570.00	QDS10	5/16	2A	M°	6 3/4	1 1/16	255
35.5	35.3	<b>5-8V35.50</b>	1990.00	QDS10	5/16	2A	M°	6 3/4	1 1/16	391
40.0	39.8	<b>5-8V40.00</b>	2240.00	QDS10	5/16	2A	M°	6 3/4	1 1/16	355
44.5	44.3	<b>5-8V44.50</b>	2990.00	QDS10	1 5/16	5A	N°	8 1/8	13/16	538
53.0	52.8	<b>5-8V53.00</b>	3480.00	QDS10	1 5/16	5A	N°	8 1/8	13/16	500



TYPE 5



TYPE 6

P.D. for "8V" Belts = O.D. Type of sheave "T": A = arms; B = block; W = web

\*Note: M-N-P-W bushings are standard mounting only for these parts.

For more details and additional products, see complete Baldor•Maska® Product Catalog or [www.maskapulleys.com](http://www.maskapulleys.com)

Gearmotors and Gear Products

PT Components

Motor Accessories

Grinders

Generators

Servo Motors and Controls

Mod Express

Baldor Education Workshops

Classifications and Sales Offices

EISA Compliance Table & Index