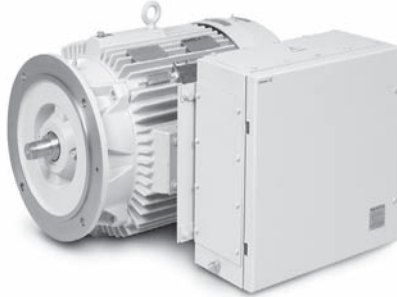


**ATEX Directive
94/9/EC**

**1 thru 500 Hp
.75 thru 373 kW**



**NEMA 180T thru 449T
IEC 112M thru 280H**



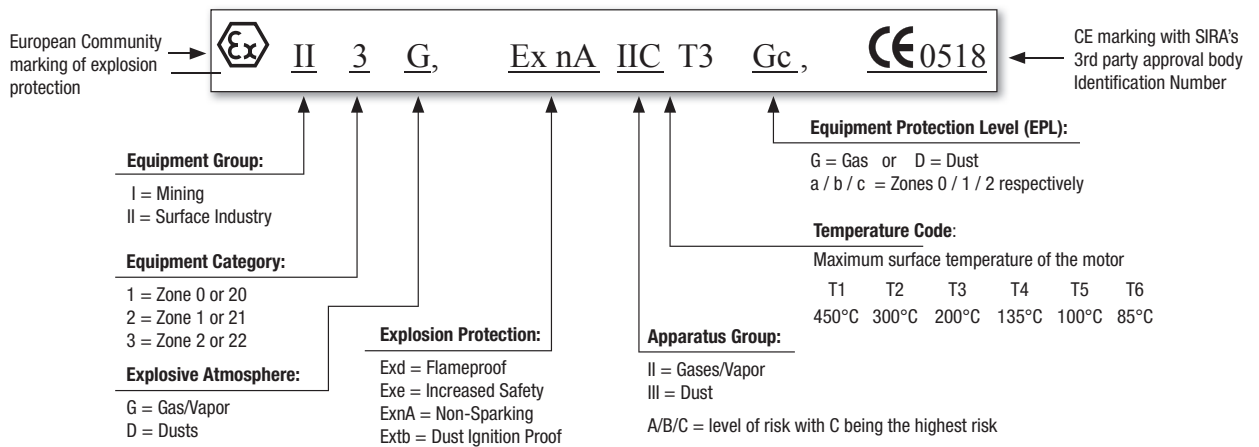
Dual Protection ATEX Motor with Increased Safety conduit box, 360T Frame, flange mounted.

Applications: Baldor offers a wide variety of Custom Explosion Proof motors for use outside the US market where other than UL certification is required. Baldor's ATEX motor certification capabilities meet the Atmospheric Explosive directive (ATEX 94/9/EC) required on all equipment used in hazardous locations within the European market. Baldor uses SIRA as our 3rd party approval body for ATEX certification. Baldor ATEX motors also carry the IECEx certification to satisfy the broader international market.

Features: Rugged Cast Iron frame, endplates, conduit box and fan cover, Super-E NEMA Premium® designs (IEC 60034-30 IE3), 1.15 Service Factor, Usable on Sine wave and Inverter power, CE compliant.

ATEX APPROVED MOTORS

It is important to have a good understanding of ATEX terminology to be able to determine which Baldor ATEX certified motor is right for your application. This terminology is different from those used by UL and should not be mixed with UL terms in specifications or quotes. Specific ATEX markings are required to certify that a motor may be used in specific potentially explosive environment. Typical ATEX markings include:



BALDOR ATEX CAPABILITIES MATRIX - Group II (Surface Industry Applications)

Environment	Explosion Protection	Max. HP (kW)	Frame NEMA (IEC)	Max. Voltage	Apparatus Group	Temp Code	Ambient Temp. (°C)
Explosive Gas Environments (G)	Exd (Flameproof) Zone 1	500HP (373kW)	180T – 449T (112M-280M)	1,000 volts	IIA & IIB	T3, T4 & T5	-20 to +40 (+65 Max)
	ExnA (Non-Sparking) Zone 2	450HP (335kW)	180T – 4412T (112M-280H)	2,300 volts	IIA, IIB & IIC	T2, T3 & T4	-20 to +40 (-30 Min)
Explosive Dust Environments (D)	Extd (Dust Ignition Proof) Zone 21	500HP (373kW)	180T – 449T (112M-280M)	1,000 volts	IIIA, IIIB & IIIC	T3, T4 & T5	-20 to +40 (+65 Max)
	Baldor motors marked "Extb" for Zone 21 may be additionally labeled "suitable for Zone 22 (EPL Dc)"						
Dual Protection Gas & Dust Environments (G/D)	Baldor ATEX motors can be dual labeled for "Exd" (Flameproof) and "Extd" (Dust Ignition Proof), Zones 1, 21 to meet the most hazardous explosive atmosphere applications.						
Increased Safety	"Exd" motors can be supplied with an Increased Safety conduit box separately labeled "Exe"						

Baldor takes pride in tailoring our custom motors to fit our customer's specific requirements. For a full range of available options, pricing and availability contact your local Baldor Sales Representative.

General Information

Premium Efficient Super-E® Motors

Single Phase Motors

General Purpose Industrial Motors

Severe Duty Motors

Washdown Duty Motors

Explosion Proof Motors

Pump Motors

Light Industrial/Commercial Motors

HVAC Motors