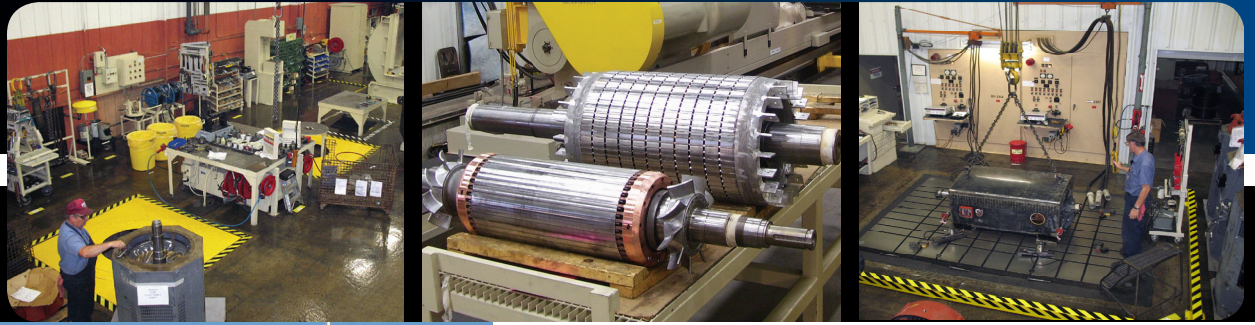


September 2008



## Inside Mena - State of the Art Manufacturing Facility

At Emerson, we take pride in designing and manufacturing one of the broadest offerings of electric motors in the industry. Since, 1966, our Mena, Arkansas facility has produced quality integral motors to meet unique customer specifications.

Today, the Mena facility produces thousands of U.S. MOTORS® brand stock and custom electric motors annually. Our highly skilled staff is dedicated to our brand promise to deliver our customers the best value, service and quality motors.

- ISO®† 9000-2000 Certification
- API®† 547 Spec Q1 Monogram Certification
- CSA®† & UL®† Certified
- Manufactures 400 - 9600 Frame Sizes
- Rigorous Testing Capabilities



EMERSON. CONSIDER IT SOLVED®

## Revolutionizing the Industry

### Setting the bar for quality, to assure your complete satisfaction.

From engineering...to manufacturing...to distribution...to customer service...we strive for nothing less than excellence in everything we do. "Quality" isn't just a word at Emerson. It's the way we do business.

At the heart of our corporate culture is our exclusive Perf(x)<sup>®</sup> program (which stands for Performance Excellence). It includes a number of initiatives that go into our daily processes and procedures, resulting in superior quality products and service.



**Our Vision:**  
*Be the leading global provider of motor solutions by enabling "Total Customer Success."*

**Our Brand Promise:**  
*Utilize innovation and technology to deliver to our customers the best value, service and quality motor & drive solutions.*

**Our Values:**  
*Foster a work environment where all employees focus first on the customer and work together for continuous improvement through:*

- Communications
- Respect for the individual
- Uncompromised integrity
- Employee Appreciation
- Employee Development
- Teamwork

### Perf(x)<sup>®</sup> Tools

**Six Sigma** - minimizing variations and striving for perfection

**Company Wide Quality Improvement (CWQI)** - a system of ongoing process improvement at every level of the company

**5S+1** - organizational methods that allow more efficient production

**Lean Enterprise** - minimizing waste, maximizing efficiency and speeding delivery

**Employee Involvement** - creating an atmosphere of cooperation and collaboration

**Project Management** - formal tools for structuring and tracking a project, with reviews at each critical stage

### An Industry First

Emerson's Mena facility is one of the first electric motor facilities in the world to be recognized and receive certification for their Quality Programs by the Petroleum, Petrochemical & Natural Gas Industry with API<sup>®†</sup> 547 Spec Q1 Monogram. This was accomplished through rigorous audits consisting of in-depth reviews of their procedures for conformance to the Quality Management System (QMS) Standard and demonstrated implementation of these documented procedures to put their QMS in place. For more information go to [www.emersonmotors.com/oil-gas](http://www.emersonmotors.com/oil-gas).



## Manufacturing Processes & Capabilities

**Emerson's Mena Manufacturing Facility offers reliable manufacturing processes and capabilities that include:**

- Improved Die Casting Methods
- Precision Grinding Units - for Premium Finish of Motor Shafts
- State-of-the-art Precision Balancing
- Vacuum Pressure Impregnation System (VPI)
- Clean Room – to control contamination in operations
- Sound and Vibration Labs
- Dynamometer Testing to verify specifications
- Observation Booth – for comfortable and convenient witness testing

*Finished motors at shipping*

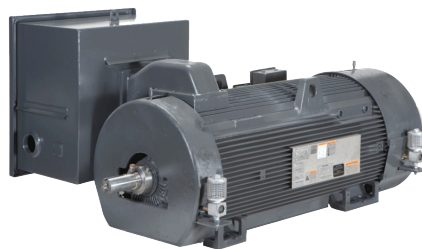


**Mena manufactures comprehensive product lines including:**

- 400-9600 Frame Integral Horse Power Motors
- Vertical and Horizontal Motors
- 25-6000 Horse Power (HP)
- 220-6900 Volts
- Custom and Special Order Focus per Customer Specifications
- Titan® Motors meeting API specifications



**Vertical Holloshaft® Motor (VHS)**



**Titan® Motor meeting API specifications (API<sup>†</sup> 547)**



**Titan® Horizontal Motor**



**Vertical Solid Shaft Motor (VSS)**

## Testing Capabilities

Emerson's Mena Manufacturing facility adheres to stringent industry standards for electric motor testing. Our processes and procedures ensure the quality of each motor we produce.

### Dynamometer Testing

- 50-4000 HP motors are tested to verify efficiency, power factor, heat rise, starting current and torque. Testing can be conducted at 120-6900V and 60 & 50 Hz.

### Water Immersion Test

- Electrical testing of stators can include immersion testing to API specifications to demonstrate integrity of our insulation systems.
- Designed to mimic the harsh environmental conditions that motors in this industry need to sustain under full loads.

### Vibration Testing

- State-of-the-art vibration monitoring equipment is used to monitor vibration.
- All no-load and heat-run tests are completed on isolated large-mass bases to ensure accuracy of vibration measurements.
- Testing can be conducted in conformance to API specifications.

### Other Tests include:

- Polarization
- Warranty Analysis
- Pilot/Prototype
- Witness Testing
- Sound Testing
- And More

Vacuum Pressure Impregnation Tank



Test Lab with dynamometers



† All non-Emerson Electric Co. marks shown within this document are properties of their respective owners.

\* Emerson trademarks followed by the ® symbol are registered with the U.S. Patent and Trademark Office.

Emerson, a global leader in the design and manufacture of electrical motors, provides a complete line of general and special purpose electric motors from 1/200 through 5,000 horsepower. Brands such as Emerson®, U.S. Motors® and Hurst® allow Emerson to support a wide variety of applications including commercial and industrial, appliance, hermetic, automotive, and HVAC. Emerson (NYSE:EMR), based in St. Louis, is a global leader in bringing technology and engineering together to provide innovative solutions to customers through its network power, process management, industrial automation, climate technologies, and appliance and tools businesses.



## Emerson Motor Company

8100 West Florissant Ave.

St. Louis, MO 63136

Phone: 888-637-7333

Fax: 314-553-2087



**EMERSON**  
Motor Technologies