

“C” SECTION

4 GROOVES Dimensions

Datum dia.	O.D.	Part No.	List Price	Mult. Sym.	F = 4 3/8 inches					Approx. Wt. (lbs)
					H	Type	B	L	E	
5.0	5.4	4C50*	156.00	QDS06	5/8	1B	SD	1 13/16	1 15/16	10.2
5.0	5.4	4C50SK ¹	156.00	QDS06	13/16	11B	SK	1 7/8	3 5/16	12.0
5.6	6.0	4C56	158.00	QDS06	7/8	1B	SD	1 13/16	1 11/16	13.0
6.0	6.4	4C60	160.00	QDS06	1/16	1B	SF	2	2 5/16	15.0
7.0	7.4	4C70	164.00	QDS06	3/4	1B	SF	2	1 5/8	19.0
7.5	7.9	4C75	172.00	QDS06	3/4	1B	SF	2	1 5/8	22.0
8.0	8.4	4C80	196.00	QDS06	15/16	1B	E	2 5/8	13/16	24.0
8.5	8.9	4C85	208.00	QDS06	15/16	1B	E	2 5/8	13/16	28.0
9.0	9.4	4C90	224.00	QDS06	15/16	1B	E	2 5/8	13/16	31.0
9.5	9.9	4C95	228.00	QDS06	15/16	1B	E	2 5/8	13/16	34.8
10.0	10.4	4C100	240.00	QDS06	15/16	1B	E	2 5/8	13/16	40.0
10.5	10.9	4C105	260.00	QDS06	15/16	1W	E	2 5/8	13/16	43.0
11.0	11.4	4C110	272.00	QDS06	15/16	1W	E	2 5/8	13/16	44.0
12.0	12.4	4C120	300.00	QDS06	15/16	1W	E	2 5/8	13/16	50.0
13.0	13.4	4C130	336.00	QDS06	15/16	1A	E	2 5/8	13/16	52.0
14.0	14.4	4C140	364.00	QDS06	15/16	1A	E	2 5/8	13/16	57.0
16.0	16.4	4C160	420.00	QDS06	15/16	1A	E	2 5/8	13/16	67.0
18.0	18.4	4C180	430.00	QDS06	15/16	1A	E	2 5/8	13/16	72.0
20.0	20.4	4C200	450.00	QDS06	7/16	1A	E	2 5/8	1 5/16	86.0
24.0	24.4	4C240	560.00	QDS06	3/32	1A	F	3 5/8	21/32	113.0
27.0	27.4	4C270	660.00	QDS06	3/32	1A	F	3 5/8	21/32	140.0
30.0	30.4	4C300	760.00	QDS06	3/32	1A	F	3 5/8	21/32	149.0
36.0	36.4	4C360	1120.00	QDS07	5/32	1A	F	3 5/8	19/32	185.0
44.0	44.4	4C440	1800.00	QDS07	7/32	2A	J	4 1/2	11/32	225.0
50.0	50.4	4C500	2120.00	QDS07	7/32	2A	J	4 1/2	11/32	275.0

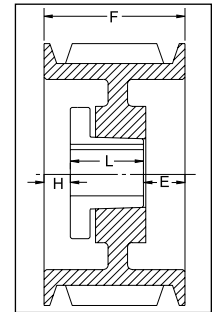
Type of sheave "T": A = arms; B = block; W = web

5 GROOVES Dimensions

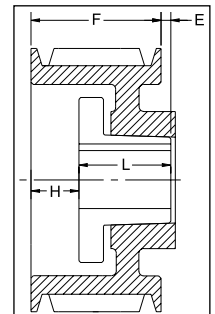
Datum dia.	O.D.	Part No.	List Price	Mult. Sym.	F = 5 3/8 inches					Approx. Wt. (lbs)
					H	Type	B	L	E	
6.0	6.4	5C60SF	172.00	QDS06	1/16	1B	SF	2	3 5/16	16
7.0	7.4	5C70	176.00	QDS06	1 1/8	1B	SF	2	2 1/4	23
7.5	7.9	5C75	224.00	QDS06	1 1/8	1B	SF	2	2 1/4	25
8.0	8.4	5C80	236.00	QDS06	1 5/16	1B	E	2 5/8	1 7/16	28
8.5	8.9	5C85	252.00	QDS06	1 5/16	1B	E	2 5/8	1 7/16	32
9.0	9.4	5C90	256.00	QDS06	1 5/16	1B	E	2 5/8	1 7/16	36
9.5	9.9	5C95	262.00	QDS06	1 5/16	1B	E	2 5/8	1 7/16	40
10.0	10.4	5C100	276.00	QDS06	1 5/16	1W	E	2 5/8	1 7/16	41
10.5	10.9	5C105	296.00	QDS06	1 5/16	1W	E	2 5/8	1 7/16	44
11.0	11.4	5C110	332.00	QDS06	1 5/16	1W	E	2 5/8	1 7/16	47
12.0	12.4	5C120	336.00	QDS06	1 5/16	1W	E	2 5/8	1 7/16	55
13.0	13.4	5C130	376.00	QDS06	1 5/16	1A	E	2 5/8	1 7/16	55
14.0	14.4	5C140	380.00	QDS06	1 5/16	1A	E	2 5/8	1 7/16	62
16.0	16.4	5C160	430.00	QDS06	1 5/16	1A	E	2 5/8	1 7/16	73
18.0	18.4	5C180	480.00	QDS06	1 5/16	1A	E	2 5/8	1 7/16	83
20.0	20.4	5C200	600.00	QDS06	3/32	1A	F	3 5/8	1 21/32	109
24.0	24.4	5C240	640.00	QDS06	3/32	1A	F	3 5/8	1 21/32	129
27.0	27.4	5C270	760.00	QDS06	3/32	1A	F	3 5/8	1 21/32	149
30.0	30.4	5C300	840.00	QDS06	3/32	1A	F	3 5/8	1 21/32	172
36.0	36.4	5C360	1180.00	QDS07	7/32	1A	J	4 1/2	21/32	205
44.0	44.4	5C440	1940.00	QDS07	7/32	1A	J	4 1/2	21/32	285
50.0	50.4	5C500	2280.00	QDS07	7/32	1A	J	4 1/2	21/32	325

P.D. for "C" Belts = O.D. ¹ Reverse mount only. * Mounting bolts are supplied by Baldor with these parts.

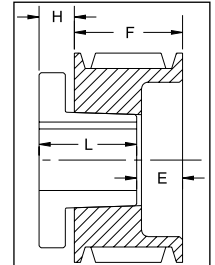
For more details and additional products, see complete Baldor•Maska® Product Catalog or www.maskapulleys.com



TYPE 1



TYPE 2



TYPE 11

Gearmotors and Gear Products

PT Components

Motor Accessories

Grinders

Generators

Servo Motors and Controls

Mod Express

Baldor Education Workshops

Classifications and Sales Offices

EISA Compliance Table & Index