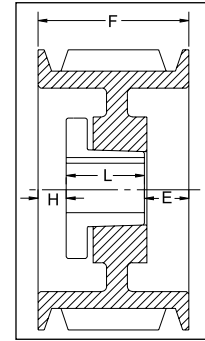


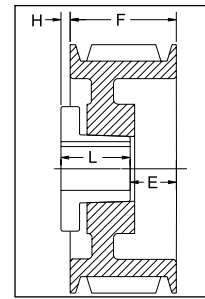
"A/B" COMBINATION 3 GROOVES

Dimensions

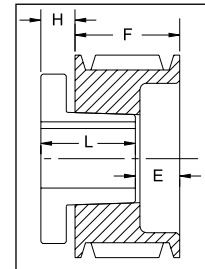
Datum dia.		O.D.	Part No.	List Price	Mult. Sym.	F = 2 1/2 inches					Approx. Wt. (lbs)
"A" Belts	"B" Belts					H	Type	B	L	E	
3.0	3.4	3.75	3B34 ^{1*}	44.00	QDS05	5/8	11B	SH	1 1/4	1 7/8	3
3.2	3.6	3.95	3B36 ¹	46.00	QDS05	1/2	6B	SH	1 1/4	1 3/4	4
3.4	3.8	4.15	3B38 ¹	48.00	QDS05	1/2	6B	SH	1 1/4	1 3/4	4
3.6	4.0	4.35	3B40 ¹	50.00	QDS05	5/8	11B	SH	1 1/4	1 7/8	4
3.8	4.2	4.55	3B42 [*]	52.00	QDS05	7/16	1B	SH	1 1/4	13/16	4
4.0	4.4	4.75	3B44	54.00	QDS05	7/16	1B	SH	1 1/4	13/16	5
4.2	4.6	4.95	3B46 [*]	56.00	QDS05	3/8	1B	SD	1 13/16	5/16	5
4.4	4.8	5.15	3B48	58.00	QDS05	3/8	1B	SD	1 13/16	5/16	6
4.6	5.0	5.35	3B50	60.00	QDS05	3/8	1B	SD	1 13/16	5/16	7
4.8	5.2	5.55	3B52	62.00	QDS05	3/8	1B	SD	1 13/16	5/16	7
5.0	5.4	5.75	3B54	64.00	QDS05	3/8	1B	SD	1 13/16	5/16	8
5.2	5.6	5.95	3B56	66.00	QDS05	3/8	1B	SD	1 13/16	5/16	9
5.4	5.8	6.15	3B58	68.00	QDS05	3/8	1W	SD	1 13/16	5/16	9
5.6	6.0	6.35	3B60	70.00	QDS05	3/8	1W	SD	1 13/16	5/16	10
5.8	6.2	6.55	3B62	72.00	QDS05	3/8	1W	SD	1 13/16	5/16	10
6.0	6.4	6.75	3B64	76.00	QDS05	3/8	1W	SD	1 13/16	5/16	10
6.2	6.6	6.95	3B66	78.00	QDS05	3/8	1W	SD	1 13/16	5/16	10
6.4	6.8	7.15	3B68	80.00	QDS05	3/8	1W	SD	1 13/16	5/16	11
6.6	7.0	7.35	3B70	82.00	QDS05	1/8	6W	SK	1 7/8	3/4	12
7.0	7.4	7.75	3B74	84.00	QDS05	1/8	6W	SK	1 7/8	3/4	12
7.6	8.0	8.35	3B80	88.00	QDS05	1/8	6W	SK	1 7/8	3/4	13
8.2	8.6	8.95	3B86	96.00	QDS05	1/8	6A	SK	1 7/8	3/4	14
8.6	9.0	9.35	3B90	100.00	QDS05	1/8	6A	SK	1 7/8	3/4	15
9.0	9.4	9.75	3B94	104.00	QDS05	1/8	6A	SK	1 7/8	3/4	17
10.6	11.0	11.35	3B110	124.00	QDS05	1/8	6A	SK	1 7/8	3/4	21
12.0	12.4	12.75	3B124	144.00	QDS05	1/8	6A	SK	1 7/8	3/4	25
13.2	13.6	13.95	3B136	156.00	QDS05	1/8	6A	SK	1 7/8	3/4	28
15.0	15.4	15.75	3B154	200.00	QDS05	1/8	6A	SK	1 7/8	3/4	30
15.6	16.0	16.35	3B160	212.00	QDS05	1/8	6A	SK	1 7/8	3/4	32
18.0	18.4	18.75	3B184	244.00	QDS05	1/8	6A	SK	1 7/8	3/4	41
19.6	20.0	20.35	3B200	324.00	QDS05	3/16	6A	SF	2	11/16	55.6
24.6	25.0	25.35	3B250	440.00	QDS05	3/16	6A	SF	2	11/16	76.1
29.6	30.0	30.35	3B300	500.00	QDS05	3/16	6A	SF	2	11/16	96
37.6	38.0	38.35	3B380	880.00	QDS07	3/8	6A	E	2 5/8	1/4	145



TYPE 1



TYPE 6



TYPE 11

P.D. for "A" (4L) Belts = Datum Dia. + .35" = O.D. - .40

P.D. for "B" (5L) Belts = O.D.

¹ Reverse mount only.

* Mounting bolts are supplied by Baldor with these parts.

Type of sheave "T": A = arms; B = block; W = web