

CAP PRODUCTS LTD

Product Catalog





CAP PRODUCTS LTD

PRODUCT CATALOG

PIPE FITTINGS

Pipe Nipples Welded and Seamless Carbon Steel	2
Pipe Nipples Welded and Seamless Stainless Steel	3
Pipe Nipples End Finishes	4
Couplings Standard Merchant Full	5
Couplings Standard Merchant Half	6
Couplings Extra Heavy No Recess Full	7
Couplings Extra Heavy No Recess Half	8
Couplings API Line	9
Hex Bushings Standard Pressure	10
Pipe Plugs Standard Pressure Square Head	11
Pipe Plugs Standard Pressure Square and Hex Countersunk	12
Serrated Adapters Male	13
Serrated Adapters Insert Couplings	14
Serrated Adapters Well Seal Elbows	15
Serrated Adapters Male Venturi	16

CONDUIT FITTINGS

Conduit Elbows Rigid	17
Conduit Elbows EMT	18
Conduit Couplings	19
Conduit Nipples	20
10' Conduit With Couplings	21

25 Winnipeg Street
Vanastra, ON N0M1L0

Phone: (519) 482-5000 Fax: (519) 482-7728
(800) 265-5586 (800) 565-3471

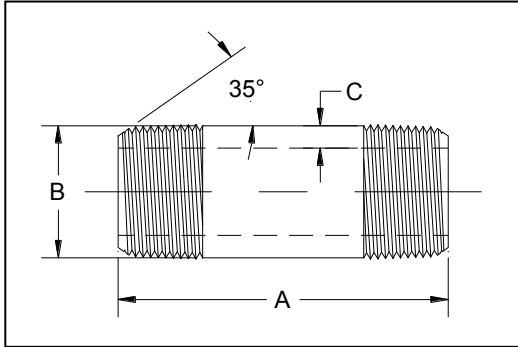
sales@capproducts.com

www.capproducts.com

www.capitolcamco.com

Pipe Fittings

Pipe Nipples, Welded and Seamless, Carbon Steel

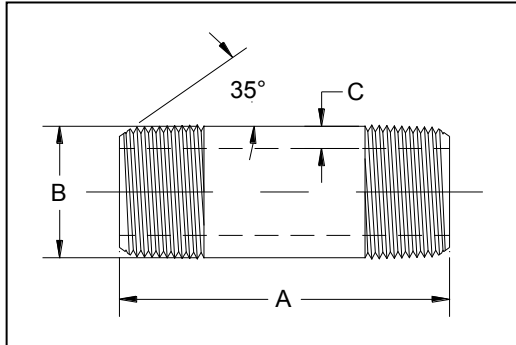


Conforms to: Continuous Welded - ASTM A53 Type F
 Electric Resistance Welded - ASTM A53 Type E, Grade B
 Seamless, High Temperature - ASTM A106 Grade B, ASTM A53 Type S, Grade B, API 5L, Grade B
 Seamless, Low Temperature - ASTM A333 Grade 6 (Available only in XH, 160 and XXH)

Finish: Standard Black or Galvanized

PIPE SIZE	B PIPE O.D.	A LENGTH		C NOMINAL WALL			
		CLOSE	SPACE	STD.	XH	160	XXH
1/8	.405	3/4	1 1/2 - 24	.068	.095	N/A	N/A
1/4	.540	7/8	1 1/2 - 24	.088	.119	N/A	N/A
3/8	.675	1	1 1/2 - 24	.091	.126	N/A	N/A
1/2	.840	1 1/8	1 1/2 - 24	.109	.147	.188	.294
3/4	1.050	1 3/8	1 1/2 - 24	.113	.154	.219	.308
1	1.315	1 1/2	2 - 24	.133	.179	.250	.358
1 1/4	1.660	1 5/8	2 - 24	.140	.191	.250	.382
1 1/2	1.900	1 3/4	2 - 24	.145	.200	.281	.400
2	2.375	2	2 1/2 - 24	.154	.218	.344	.436
2 1/2	2.875	2 1/2	3 - 24	.203	.276	.375	.552
3	3.500	2 5/8	3 - 24	.216	.300	.438	.600
3 1/2	4.000	2 3/4	4 - 24	.226	.318	N/A	N/A
4	4.500	2 7/8	4 - 24	.237	.337	.531	.674
5	5.563	3	4 1/2 - 24	.258	.375	.625	.750
6	6.625	3 1/8	4 1/2 - 24	.280	.432	.719	.864
8	8.625	3 1/2	5 - 24	.322	.500	.906	.875

Pipe Nipples, Welded and Seamless, Stainless Steel

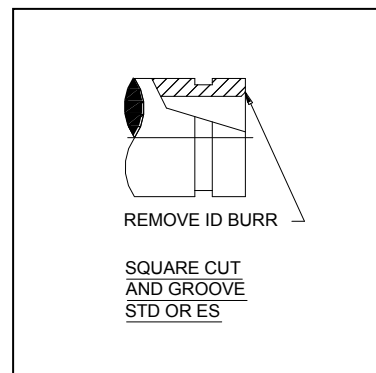
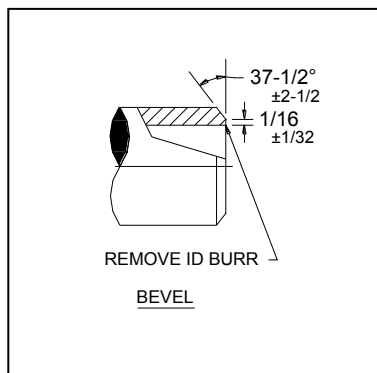
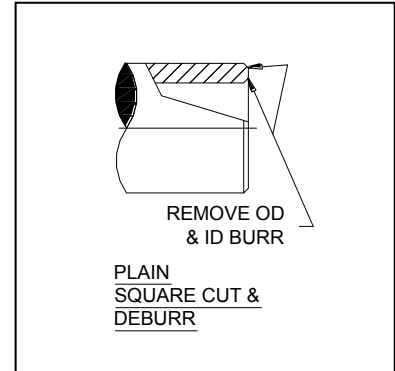
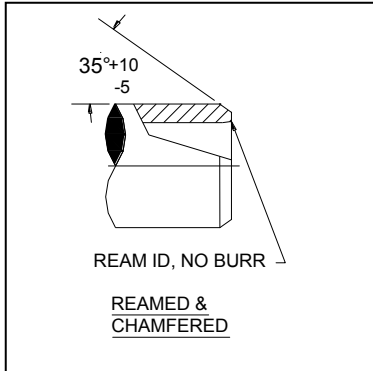
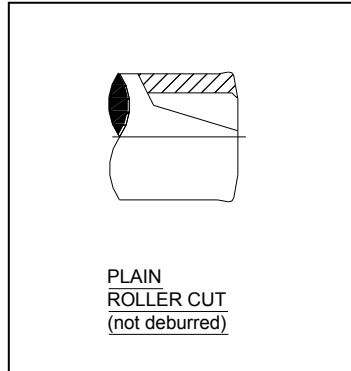


Conforms to: Electric Resistance Welded - ASTM A312, Type 304/304L or 316/316L
 Seamless, ASTM A312 Type 304/304L or 316/316L

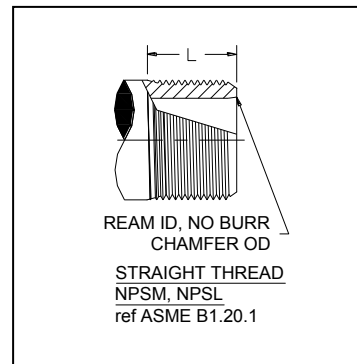
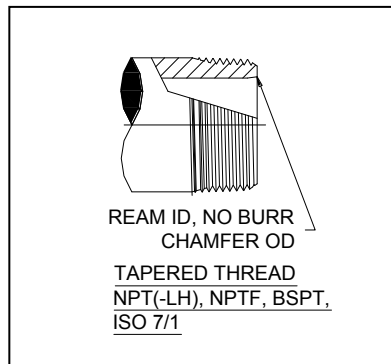
PIPE SIZE	B PIPE O.D.	A LENGTH		C NOMINAL WALL			
		CLOSE	SPACE	STD.	XH	160	XXH
1/8	.405	3/4	1 1/2 - 24	.068	.095	N/A	N/A
1/4	.540	7/8	1 1/2 - 24	.088	.119	N/A	N/A
3/8	.675	1	1 1/2 - 24	.091	.126	N/A	N/A
1/2	.840	1 1/8	1 1/2 - 24	.109	.147	.188	.294
3/4	1.050	1 3/8	1 1/2 - 24	.113	.154	.219	.308
1	1.315	1 1/2	2 - 24	.133	.179	.250	.358
1 1/4	1.660	1 5/8	2 - 24	.140	.191	.250	.382
1 1/2	1.900	1 3/4	2 - 24	.145	.200	.281	.400
2	2.375	2	2 1/2 - 24	.154	.218	.344	.436
2 1/2	2.875	2 1/2	3 - 24	.203	.276	.375	.552
3	3.500	2 5/8	3 - 24	.216	.300	.438	.600
3 1/2	4.000	2 3/4	4 - 24	.226	.318	N/A	N/A
4	4.500	2 7/8	4 - 24	.237	.337	.531	.674
5	5.563	3	4 1/2 - 24	.258	.375	.625	.750
6	6.625	3 1/8	4 1/2 - 24	.280	.432	.719	.864
8	8.625	3 1/2	5 - 24	.322	.500	.906	.875

PIPE NIPPLE END FINISHES

Plain End Pipe



Threaded End Pipe



TBE - "Thread Both Ends" (Both ends threaded with standard NPT Threads)

TOE - "Thread One End" (One end threaded with standard NPT Thread. Customer must specify other end, otherwise Roller Cut will be supplied)

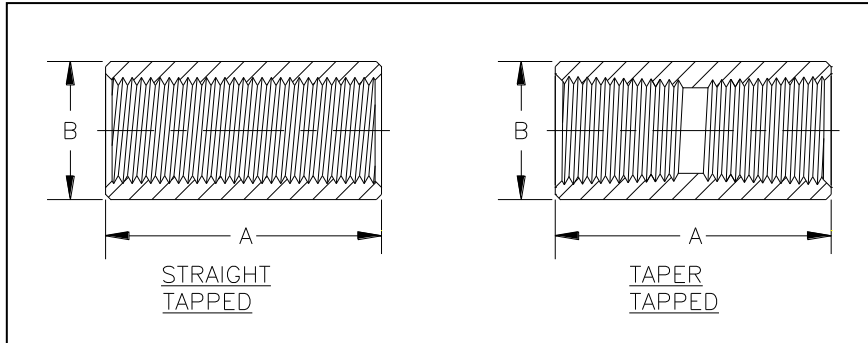
NPTF - "Dryseal" (Standard taper dryseal pipe threads)

NPSL - "Straight Locknut" (Standard straight pipe threads for loose-fitting mechanical joints with locknuts)

NPSM - "Straight Mechanical" (Standard straight pipe threads for free-fitting mechanical joints for fixtures)

BSPT (ISO 7/1) - British Standard Taper Pipe Threads

Couplings, Standard Merchant



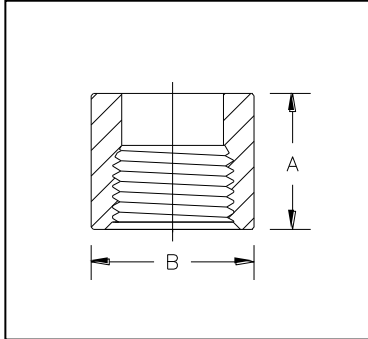
Material: AISI C1010 Sizes 1/8" to 1"
 ASTM A53 Type F Sizes 1-1/4" to 3"
 ASTM A106 Grade B Sizes 3-1/2" to 6"
 Conforms to: ASTM A865, ASME B1.20.1

Pipe Size	1/8	1/4	3/8	1/2	3/4	1	1-1/4	1-1/2	2
A	0.812	1.188	1.188	1.562	1.625	2.000	2.062	2.062	2.125
B	0.562	0.719	0.875	1.062	1.312	1.576	1.900	2.200	2.750
Approx Weight	0.05	0.07	0.09	0.17	0.26	0.40	0.48	0.67	1.05

Pipe Size	2-1/2	3	3-1/2	4	5	6
A	3.125	3.250	3.375	3.500	3.750	4.000
B	3.250	4.000	4.625	5.000	6.296	7.390
Approx Weight	2.09	3.35	4.82	4.61	8.52	11.27

Notes: Unless otherwise specified, Standard Merchant Couplings are furnished straight tapped in sizes in sizes 1/8" to 2" inclusive.
 Standard Merchant Couplings in 2" size are available Taper Tapped as special.
 Standard Merchant Couplings in sizes 2-1/2" to 6" are furnished Taper Tapped.
 Galvanized couplings are Electro Zinc Plated.
 Black couplings are phosphate coated.

Half Couplings, Standard Merchant



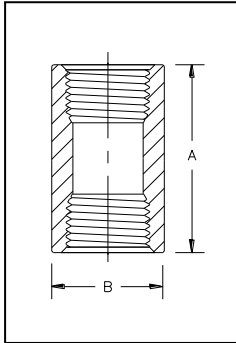
Material: ASTM A53 Type F Sizes 1/8" to 3"
 ASTM A106 Grade B Sizes 3-1/2" to 6"
 Conforms to: ASTM A865, ASME B1.20.1

Pipe Size	1/8	1/4	3/8	1/2	3/4	1	1-1/4	1-1/2	2
A	0.344	0.531	0.531	0.719	0.750	0.937	0.969	0.969	1.000
B	0.562	0.719	0.875	1.062	1.312	1.576	1.900	2.200	2.750
Approx Weight	0.02	0.04	0.05	0.08	0.12	0.18	0.23	0.32	0.47

Pipe Size	2-1/2	3	3-1/2	4	5	6
A	1.500	1.562	1.625	1.688	1.750	1.875
B	3.250	4.000	4.625	5.000	6.296	7.390
Approx Weight	0.96	1.60	2.22	2.11	3.80	5.28

Notes: Unless otherwise specified, Standard Merchant Half Couplings are furnished
 Taper Tapped in sizes 1/8" to 1" inclusive.
 Straight Tapped in sizes 1-1/4" to 2" inclusive and Taper Tapped in sizes 2-1/2" to 6" inclusive.
 Galvanized couplings are Electro Zinc Plated.
 Black couplings are phosphate coated.

Couplings, XH No Recess, Threaded



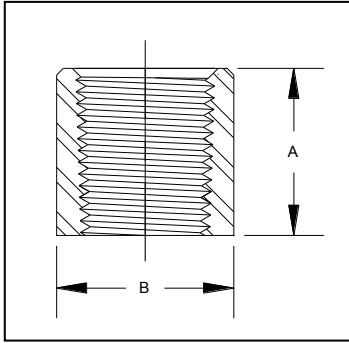
Material: ASTM A105
 Dimensions: AAR 404, ASME B1.20.1

Pipe Size	1/8 *	1/4	3/8	1/2	3/4	1	1-1/4
A	1.062	1.625	1.625	2.125	2.125	2.625	2.750
B	0.562	0.719	0.875	1.062	1.312	1.576	2.054
Approx Weight	0.04	0.09	0.14	0.25	0.36	0.68	1.08

Pipe Size	1-1/2	2	2-1/2	3	3-1/2 *	4 *	5 *	6 *
A	2.750	2.875	4.125	4.250	4.375	4.500	4.625	4.875
B	2.200	2.875	3.375	4.000	4.625	5.200	6.296	7.390
Approx Weight	0.95	2.01	3.53	4.61	6.25	8	10.51	13.74

Note: Sizes marked "*" not covered under AAR 404

Half Couplings, XH No Recess, Threaded



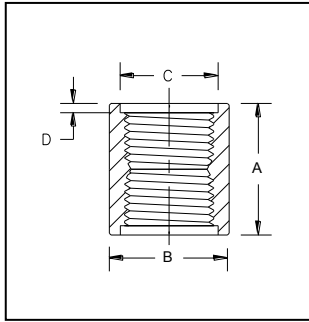
Material: ASTM A105 or Seamless Tubing
 Dimensions: AAR 404, ASME B1.20.1

Pipe Size	1/8 *	1/4	3/8	1/2	3/4	1	1-1/4
A	0.468	0.750	0.750	1.000	1.000	1.250	1.312
B	0.562	0.719	0.875	1.062	1.312	1.576	2.054
Approx Weight	0.02	0.04	0.06	0.11	0.17	0.35	0.51

Pipe Size	1-1/2	2	2-1/2	3	3-1/2 *	4 *	5 *	6 *
A	1.312	1.375	2.000	2.062	2.125	2.188	2.188	2.312
B	2.200	2.875	3.375	4.000	4.625	5.200	6.296	7.390
Approx Weight	0.45	0.92	1.72	2.12	2.97	3.84	4.85	6.85

Note: Sizes marked " * " not covered under AAR 404

API Line Pipe Couplings

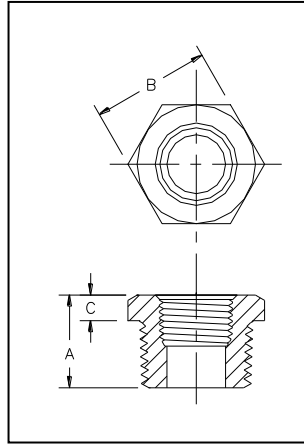


Material: API 5L Section 8
 Dimensions: API 5L, API 5B

Pipe Size	1/8	1/4	3/8	1/2	3/4	1	1-1/4	1-1/2	2
A	1.062	1.625	1.625	2.125	2.125	2.625	2.750	2.750	2.875
B	0.562	0.718	0.875	1.062	1.312	1.576	2.054	2.200	2.875
C	0.468	0.603	0.738	0.903	1.113	1.378	1.723	1.963	2.469
D	0.052	0.120	0.115	0.158	0.152	0.224	0.228	0.244	0.238
Approx Weight	0.04	0.09	0.13	0.24	0.34	0.54	1.03	1.30	1.86

Pipe Size	2-1/2	3	3-1/2	4	5	6	8	10	12
A	4.125	4.250	4.375	4.500	4.625	4.875	5.250	5.750	6.125
B	3.375	4.000	4.625	5.200	6.296	7.390	9.625	11.750	14.000
C	2.969	3.594	4.094	4.594	5.657	6.719	8.719	10.844	12.844
D	0.492	0.471	0.466	0.492	0.505	0.586	0.677	0.739	0.787
Approx Weight	3.27	4.09	5.92	7.59	9.98	12.92	23.18	31.55	49.27

Hex Bushings, Standard Pressure

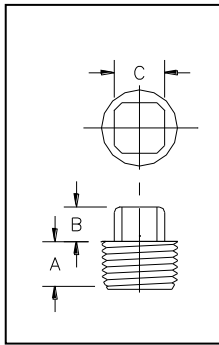


Material: AISI C1010
 Conforms to: ASME B16.14, ASME B1.20.1

Pipe Size	1/4	3/8	1/2	3/4	1
A	0.640	0.700	0.880	0.970	1.190
B	0.620	0.690	0.880	1.060	1.380
C	0.140	0.190	0.190	0.220	0.310
Approx. Weight	0.02	0.05	0.11	0.21	0.36

Sizes Available: 1/4 x 1/8 3/4 x 1/2 1 x 3/4
 3/8 x 1/4 3/4 x 3/8 1 x 1/2
 3/8 x 1/8 3/4 x 1/4 1 x 3/8
 1/2 x 3/8 3/4 x 1/8 1 x 1/4
 1/2 x 1/4 1 x 1/8
 1/2 x 1/8

Pipe Plugs, Standard Pressure, Square Head

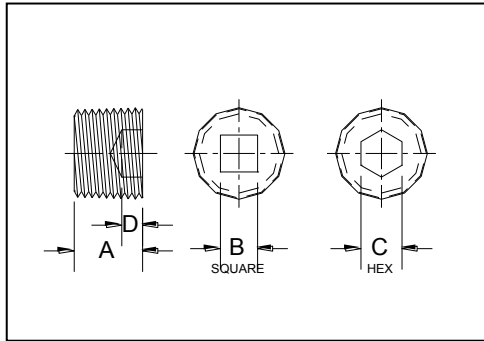


Material: AISI C1008-C1010,
 Conforms To: SAE J531, ASME B1.20.3

Pipe Size	1/8	1/4	3/8	1/2	3/4
A	0.375	0.500	0.500	0.688	0.688
B	0.250	0.281	0.312	0.375	0.437
C	0.281	0.375	0.437	0.562	0.625
Approx Weight	0.02	0.04	0.06	0.12	0.19

Notes:
 Dimensions conform to SAE J531
 Threads conform to NPTF tolerances specified in ASME B1.20.3
 Materials conform to AISI C1008-1010
 All sizes available in raw black phosphated with rust inhibitor or electro-zinc plated

Pipe Plugs, Standard Pressure, Square & Hex Counter Sunk



Material: AISI C1008-C1010, AISI C12L14

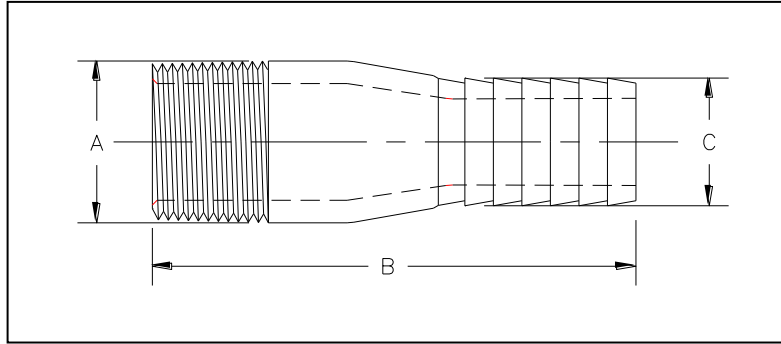
Conforms To: SAE J531, ASME B16.14, ASME B1.20.3

Dimensions: SAE J531, ASME B16.14, ASME B1.20.3

Pipe Size	1/8	1/4	3/8	1/2	3/4	1	1-1/4	1-1/2	2
A	0.312	0.469	0.469	0.625	0.812	0.781	0.812	0.844	0.891
B	0.188	0.250	0.328	0.359	0.500	0.500	0.750	0.750	0.875
C	0.188	0.250	0.312	0.375	0.562	0.625	0.750	1.000	1.000
D	0.125	0.188	0.188	0.250	0.312	0.375	0.422	0.406	0.406
Approx. Weight	0.01	0.02	0.03	0.06	0.10	0.20	0.33	0.46	0.88

- Notes:
- Dimensions of sizes from 1/8" through 1" conform to SAE J531
 - Dimensions of sizes from 1-1/4" through 2" conform to ASME B16.14
 - Threads conform to NPTF tolerances specified in ASME B1.20.3
 - Materials for sizes 1/8" through 1-1/4" conform to AISI C1008-1010
 - Materials for sizes 1-1/2" through 2" conform to AISI C12L14
 - All sizes available in raw black phosphated with rust inhibitor or electro-zinc plated

Serrated Male Adapters for Plastic Pipe

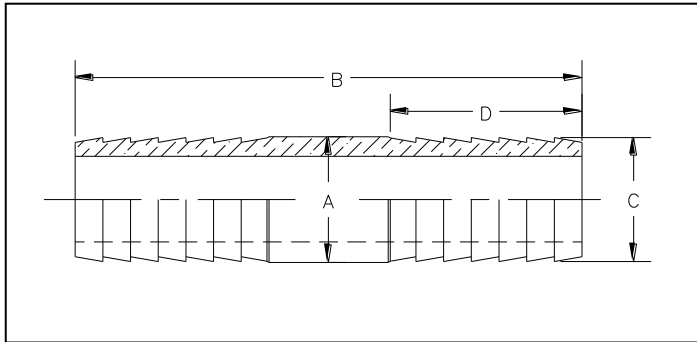


Material: ASTM A53 Galvanized Pipe, ASTM B43 Red Brass

Part Number	M-10	M-20	M-30	M-40	M-50	M-60	M-70	M-80	M-90
Pipe Size	1/2	3/4	1	1-1/4	1-1/2	2	2-1/2	3	4
A	0.840	1.050	1.315	1.660	1.900	2.375	2.875	3.500	4.500
B	3.125	3.375	3.500	3.500	4.250	4.250	5.375	5.875	7.000
C	0.645	0.845	1.075	1.405	1.640	2.095	2.505	3.100	4.060
Approx Weight	0.14	0.23	0.34	0.50	0.64	0.90	2.00	2.50	4.50

Notes: Use with Schedule 40 Plastic Pipe
 Plastic Pipe must be secured to Adapter with One or Two Worm Type Hose Clamps
 Pressure Rating equals that of Plastic Pipe

Serrated Adapters Insert Couplings



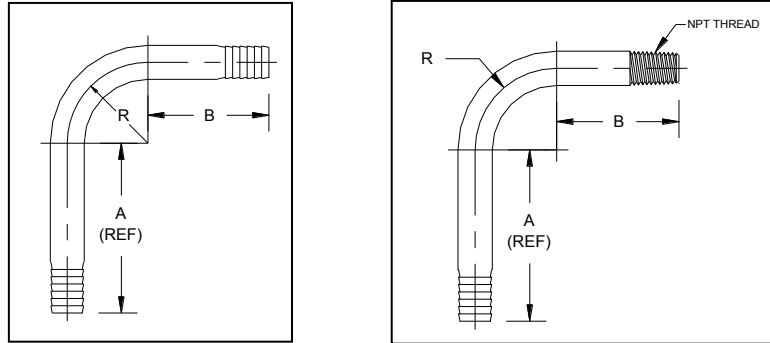
Material: ASTM A53 Galvanized Pipe, ASTM B43 Red Brass

Dimensions: Serrated Dimensions per ASTM D2609

Part No.	C-10	C-20	C-30	C-40	C-50	C-60	C-70	C-80	C-90
Pipe Size	1/2	3/4	1	1-1/4	1-1/2	2	2-1/2	3	4.000
A	0.675	0.840	1.075	1.525	1.660	2.162	2.505	3.100	4.060
B	3.375	3.375	3.625	3.625	3.750	3.750	5.500	6.000	7.750
C	0.645	0.845	1.075	1.405	1.640	2.095	2.505	3.100	4.060
D	1.281	1.281	1.281	1.281	1.281	1.281	2.250	2.750	3.500
Approx Weight Steel	0.10	0.18	0.38	0.36	0.60	1.21	1.50	2.50	5.75
Approx Weight Brass	0.09	0.19	0.30	0.46	0.62	1.07	1.50	2.50	5.75

Notes: Use with Schedule 40 Plastic Pipe
 Plastic Pipe must be secured to Adapter with One or Two Worm Type Hose Clamps
 Pressure Rating equals that of Plastic Pipe

Serrated Adapters, Well Seal Elbows



Styles: Both Ends Serrated or One End Serrated x NPT Pipe Threads

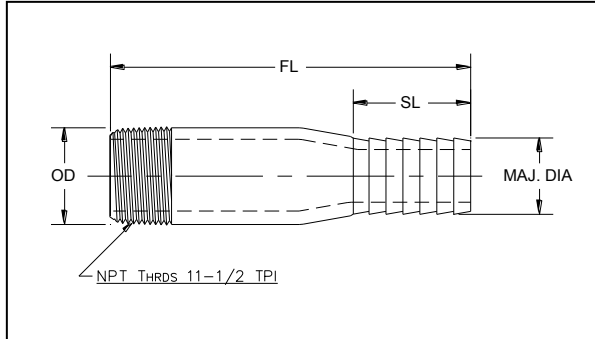
Material: ASTM A53 Galvanized Pipe, ASTM B43 Red Brass

Dimensions: Serrated Dimensions per ASTM D2609, NPT Pipe Threads per ASME B1.20.1

Pipe Size	Part No.	Dim A Ref	Dim B	R	
				Steel	Brass
1	W-30	5-1/4	3-3/4	3	2-1/4
1-1/4	W-40	5-1/4	3-3/4	4-7/8	3-7/8

Notes: Use with Schedule 40 Plastic Pipe
 Plastic Pipe must be secured to Adapter with One or Two Worm Type Hose Clamps
 Pressure Rating equals that of Plastic Pipe

Serrated Adapters Male Venturi



Material: ASTM A53 Galvanized Pipe

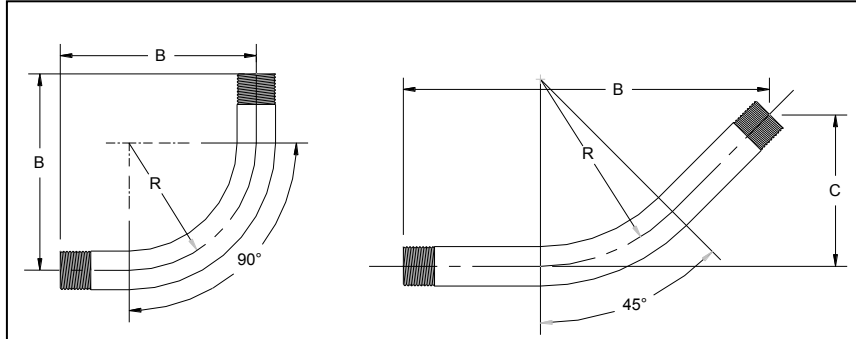
Dimensions: Serrated Dimensions per ASTM D2609, NPT Pipe Threads per ASME B1.20.1

Pipe Size	Part No.	OD	FL	SL	Maj. Dia.
1	MV-310	1.315	10	1-9/32	1.075
1-1/4	MV-410	1.660	10	1-9/32	1.405

Notes: Use with Schedule 40 Plastic Pipe
 Plastic Pipe must be secured to Adapter with One or Two Worm Type Hose Clamps
 Pressure Rating equals that of Plastic Pipe

Conduit Fittings

Rigid Conduit Elbows 90° and 45°



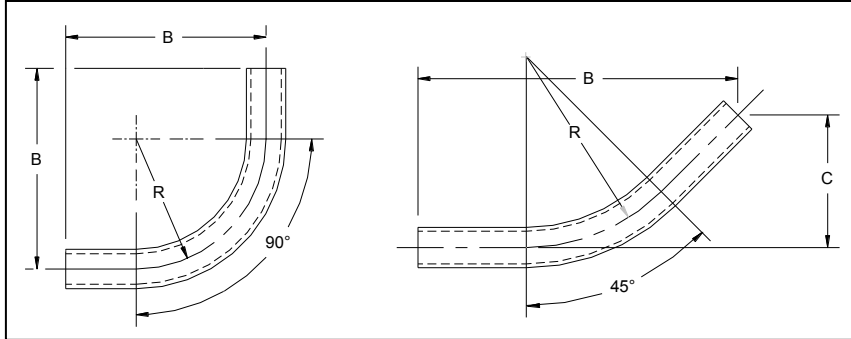
Materials: Galvanized Steel, 304 Stainless Steel and Aluminum Elbows are marked cULus and meet requirements of both CSA and UL.

Standard Radius				
Size	Radius	90°		
		B Dim.	B Dim.	C Dim.
1/2	4	6-3/16	7-13/16	3-1/4
3/4	4-1/2	6-3/4	8-11/16	3-5/8
1	5-3/4	8-5/8	9-3/16	3-13/16
1-1/4	7-1/4	10-1/16	10-11/16	4-7/16
1-1/2	8-1/4	11-9/16	11-13/16	4-7/8
2	9-1/2	14-1/16	14-7/8	6-1/8
2-1/2	10-1/2	16	18-5/16	7-9/16
3	13	19-11/16	20-9/16	8-1/2
3-1/2	15	22-3/16	23-3/16	9-5/8
4	16	23-1/8	24-1/2	10-1/8
5	24	36-1/8	38-1/4	15-7/8
6	30	42-15/16	42	17-3/8

Special Radius				
Radius	Sizes Available	90°		
		B Dim.	B Dim.	C Dim.
12	1 thru 2-1/2	21	23-7/8	9-7/8
15	1 thru 3	24	26	10-3/4
18	1 thru 4	28	29-3/4	12-3/8
24	1 thru 4	35	35-3/4	14-13/16
30	1 thru 5	41	40	16-9/16
36	1 thru 6	47	44-1/4	18-5/16
42	1 thru 6	54	50-1/8	20-13/16
48	1 thru 6	60	54-3/8	22-9/16

Notes: 5" and 6" Rigid Elbows available only in Galvanized Steel and Aluminum
 Stainless Steel 316 available upon request
 11-1/4°, 15°, 22-1/2°, 30° and 60° are also available
 Both ends NPT threads conform to ANSI B1.20.1

EMT Elbows 90° and 45°



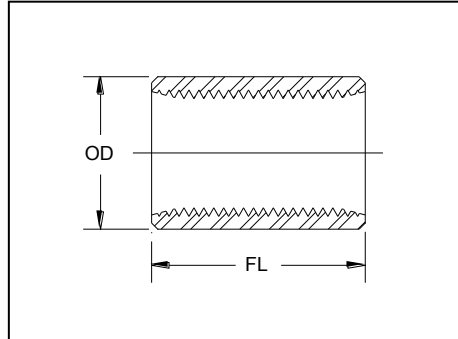
Materials: Galvanized Steel EMT Elbows are marked cULus and meet requirements of both CSA and UL.

Standard Radius				
Size	Radius	45°		
		B Dim.	B Dim.	C Dim.
1/2	4	6-3/16	7	2-7/8
3/4	4-1/2	6-11/16	7-7/8	3-1/4
1	5-3/4	8-9/16	8-15/16	3-11/16
1-1/4	7-1/4	9-15/16	9-11/16	4
1-1/2	8-1/4	11-1/2	11-3/8	4-11/16
2	9-1/2	14-1/16	14	5-13/16
2-1/2	10-1/2	16	19-3/8	8
3	13	18-13/16	22	9-1/8
3-1/2	15	23	23-13/16	9-7/8
4	16	24-7/16	25-1/16	10-3/8

Special Radius				
Radius	Sizes Available	45°		
		B Dim.	B Dim.	C Dim.
12	1-1/4 thru 2	21	23-7/8	9-7/8
15	1-1/2 thru 2	24	26	10-3/4
18	1-1/4 thru 2	28	29-3/4	12-3/8
24	2 thru 3-1/2	35	35-3/4	14-13/16
30	3 thru 4	41	40	16-9/16
36	1-1/2 thru 4	47	44-1/4	18-5/16
42	3-1/2 thru 4	54	50-1/8	20-13/16
48	1-1/2, 3 thru 4	60	54-3/8	22-9/16

Notes: 11-1/4°, 15°, 22-1/2°, 30° and 60° are also available in Standard Radius only

Conduit Couplings

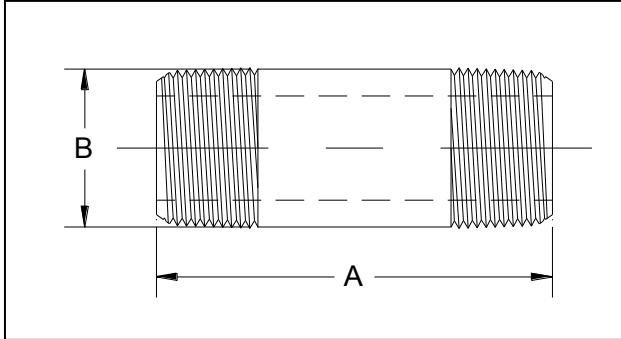


Material: Galvanized Conduit Couplings per UL6 and ANSI C80.1
 Stainless Steel 304 Conduit Couplings per UL6A
 Aluminum Couplings

Size	Threads per inch	O.D.	Length Minimum
1/2	14	1.010	1-5/8
3/4	14	1.250	1-41/64
1	11-1/2	1.525	1-31/32
1-1/4	11-1/2	1.869	2-1/32
1-1/2	11-1/2	2.155	2-1/16
2	11-1/2	2.650	2-1/8
2-1/2	8	3.250	3-3/16
3	8	3.870	3-5/16
3-1/2	8	4.500	3-13/32
4	8	4.875	3-33/64
5	8	6.000	3-61/64
6	8	7.100	4-1/4

Notes: Stainless Steel 304 Conduit Couplings available only up to 4" size
 O.D. of Stainless Steel Conduit Couplings may be larger than shown.

Conduit Nipples

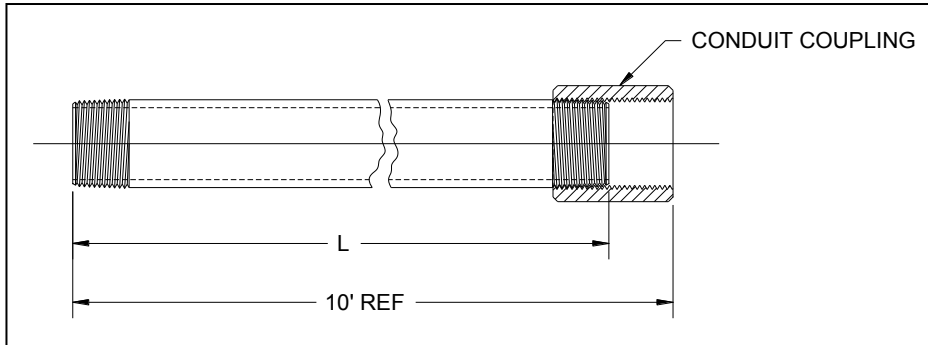


Materials: Galvanized Steel Conduits CSA Listed
 Stainless Steel 304 CSA Listed
 Aluminum CSA Listed

Size	Available Lengths A														
	Diameter B	Close Length	1-1/2	2	2-1/2	3	3-1/2	4	4-1/2	5	5-1/2	6	8	10	12
1/2	0.840	1-1/8	X	X	X	X	X	X	X	X	X	X	X	X	X
3/4	1.015	1-3/8	X	X	X	X	X	X	X	X	X	X	X	X	X
1	1.315	1-1/2		X	X	X	X	X	X	X	X	X	X	X	X
1-1/4	1.660	1-5/8		X	X	X	X	X	X	X	X	X	X	X	X
1-1/2	1.900	1-3/4		X	X	X	X	X	X	X	X	X	X	X	X
2	2.375	2			X	X	X	X	X	X	X	X	X	X	X
2-1/2	2.875	2-1/2				X	X	X	X	X	X	X	X	X	X
3	3.500	2-5/8				X	X	X	X	X	X	X	X	X	X
3-1/2	4.000	2-3/4						X	X	X	X	X	X	X	X
4	4.500	2-7/8						X	X	X	X	X	X	X	X
5	5.563	3							X	X	X	X	X	X	X
6	6.625	3-1/8							X	X	X	X	X	X	X

Notes: Lengths longer than 12" and Special Threading available upon request
 Both ends NPT threads conform to ANSI B1.20.1

10' Conduits with Coupling



Material: Stainless Steel 304 CSA Listed

Size	L Dim.
1/2	9' 11-1/4"
3/4	9' 11-1/4"
1	9' 11"
1-1/4	9' 11"
1-1/2	9' 11"
2	9' 11"
2-1/2	9' 10-1/2"
3	9' 10-1/2"
4	9' 10-1/4"