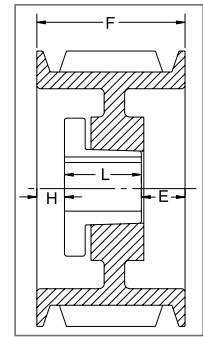


"A/B" COMBINATION

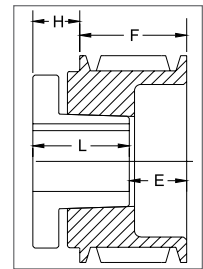
5 GROOVES

Dimensions

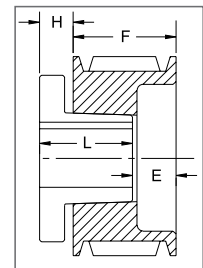
Datum dia.		O.D.	Part No.	List Price	Mult. Sym.	F = 4 inches					
"A" Belts	"B" Belts					H	Type	B	L	E	Approx. Wt. (lbs)
3.0	3.4	3.75	5B34 ^{1*}	74.00	QDS05	1	10B	SD	1 13/16	3 3/16	5
3.2	3.6	3.95	5B36 ^{1*}	76.00	QDS05	1	10B	SD	1 13/16	3 3/16	6
3.4	3.8	4.15	5B38 ^{1*}	78.00	QDS05	1	10B	SD	1 13/16	3 3/16	6
3.6	4.0	4.35	5B40 ^{1*}	80.00	QDS05	11/16	11B	SD	1 13/16	2 7/8	6
3.8	4.2	4.55	5B42 ^{1*}	82.00	QDS05	11/16	11B	SD	1 13/16	2 7/8	7
4.0	4.4	4.75	5B44 ^{1*}	84.00	QDS05	11/16	11B	SD	1 13/16	2 7/8	7
4.2	4.6	4.95	5B46*	86.00	QDS05	5/8	1B	SD	1 13/16	1 9/16	7
4.4	4.8	5.15	5B48	90.00	QDS05	5/8	1B	SD	1 13/16	1 9/16	9
4.6	5.0	5.35	5B50	92.00	QDS05	5/8	1B	SD	1 13/16	1 9/16	10
4.8	5.2	5.55	5B52	94.00	QDS05	5/8	1B	SD	1 13/16	1 9/16	10
5.0	5.4	5.75	5B54	96.00	QDS05	1/2	1B	SK	1 7/8	1 5/8	10
5.2	5.6	5.95	5B56	98.00	QDS05	1/2	1B	SK	1 7/8	1 5/8	11
5.4	5.8	6.15	5B58	100.00	QDS05	1/2	1B	SK	1 7/8	1 5/8	12
5.6	6.0	6.35	5B60	106.00	QDS05	1/2	1B	SK	1 7/8	1 5/8	12
5.8	6.2	6.55	5B62	110.00	QDS05	1/2	1B	SK	1 7/8	1 5/8	14
6.0	6.4	6.75	5B64	116.00	QDS05	1/2	1B	SK	1 7/8	1 5/8	14
6.2	6.6	6.95	5B66	120.00	QDS05	1/2	1B	SK	1 7/8	1 5/8	15
6.4	6.8	7.15	5B68	124.00	QDS05	1/2	1B	SK	1 7/8	1 5/8	16
6.6	7.0	7.35	5B70	132.00	QDS05	1/2	1B	SF	2	1 1/2	16
7.0	7.4	7.75	5B74	150.00	QDS05	1/2	1B	SF	2	1 1/2	18
7.6	8.0	8.35	5B80	154.00	QDS05	1/2	1W	SF	2	1 1/2	19
8.2	8.6	8.95	5B86	164.00	QDS05	1/2	1W	SF	2	1 1/2	21
8.6	9.0	9.35	5B90	168.00	QDS05	1/2	1A	SF	2	1 1/2	21
9.0	9.4	9.75	5B94	172.00	QDS05	1/2	1A	SF	2	1 1/2	22
10.6	11.0	11.35	5B110	194.00	QDS05	1/2	1A	SF	2	1 1/2	29
12.0	12.4	12.75	5B124	208.00	QDS05	1/2	1A	SF	2	1 1/2	33
13.2	13.6	13.95	5B136	240.00	QDS05	1/2	1A	SF	2	1 1/2	39
15.0	15.4	15.75	5B154	268.00	QDS05	1/2	1A	SF	2	1 1/2	43
15.6	16.0	16.35	5B160	294.00	QDS05	1/2	1A	SF	2	1 1/2	46
18.0	18.4	18.75	5B184	316.00	QDS05	1/2	1A	SF	2	1 1/2	54
19.6	20.0	20.35	5B200	390.00	QDS05	3/16	1A	E	2 5/8	1 3/16	77.5
24.6	25.0	25.35	5B250	500.00	QDS05	3/16	1A	E	2 5/8	1 3/16	108
29.6	30.0	30.35	5B300	696.00	QDS05	3/16	1A	E	2 5/8	1 3/16	131
37.6	38.0	38.35	5B380	1080.00	QDS07	3/16	1A	E	2 5/8	1 3/16	169



TYPE 1



TYPE 10



TYPE 11

P.D. for "A" (4L) Belts = Datum Dia. + .35" = O.D. - .40

P.D. for "B" (5L) Belts = O.D.

¹ Reverse mount only.

* Mounting bolts are supplied by Baldor with these parts.

Type of sheave "T": A = arms; B = block; W = web