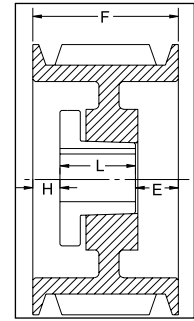


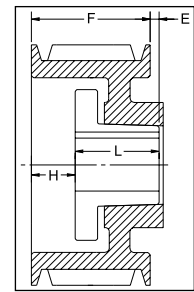
5V SECTION 8 GROOVES

Dimensions

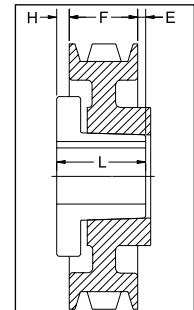
O.D.	Datum dia.	Part No.	List Price	Mult. Sym.	F = 5 13/16 inches					
					H	Type	B	L	E	Approx. Wt. (lbs)
7.10	7.00	8-5V7.10	186.00	QDS08	1 1/16	1B	SF	2	2 3/4	23
7.50	7.40	8-5V7.50	206.00	QDS08	1 1/16	1B	SF	2	2 3/4	25.4
8.00	7.90	8-5V8.00	226.00	QDS08	1 1/16	1B	E	2 5/8	2 1/8	26
8.50	8.40	8-5V8.50	248.00	QDS08	1 1/16	1B	E	2 5/8	2 1/8	33
9.00	8.90	8-5V9.00	268.00	QDS08	1 1/16	1B	E	2 5/8	2 1/8	36
9.25	9.15	8-5V9.25	300.00	QDS08	1 1/32	1B	F	3 5/8	1 5/32	42
9.75	9.65	8-5V9.75	320.00	QDS08	1 1/32	1B	F	3 5/8	1 5/32	47
10.30	10.20	8-5V10.30	340.00	QDS08	1 1/32	1B	F	3 5/8	1 5/32	54
10.90	10.80	8-5V10.90	348.00	QDS08	1 1/32	1B	F	3 5/8	1 5/32	61
11.30	11.20	8-5V11.30	356.00	QDS08	1 1/32	1W	F	3 5/8	1 5/32	57
11.80	11.70	8-5V11.80	374.00	QDS08	1 1/32	1W	F	3 5/8	1 5/32	59
12.50	12.40	8-5V12.50	388.00	QDS08	1 1/32	1W	F	3 5/8	1 5/32	63
13.20	13.10	8-5V13.20	440.00	QDS08	1 1/32	1W	F	3 5/8	1 5/32	67
14.00	13.90	8-5V14.00	480.00	QDS08	1 1/32	1W	F	3 5/8	1 5/32	77
15.00	14.90	8-5V15.00	560.00	QDS08	1 1/32	1A	F	3 5/8	1 5/32	79
16.00	15.90	8-5V16.00	640.00	QDS08	1 1/32	1A	F	3 5/8	1 5/32	85
18.70	18.60	8-5V18.70	700.00	QDS08	5/32	1A	J	4 1/2	1 5/32	112
21.20	21.10	8-5V21.20	760.00	QDS08	7/32	6A	J	4 1/2	1 17/32	119
23.60	23.50	8-5V23.60	840.00	QDS08	5/32	1A	J	4 1/2	1 5/32	154
28.00	27.90	8-5V28.00	1020.00	QDS08	7/32	6A	J	4 1/2	1 17/32	179
31.50	31.40	8-5V31.50	1440.00	QDS10	7/32	2A	M°	6 3/4	1 5/32	295
37.50	37.40	8-5V37.50	1780.00	QDS10	9/32	5A	M°	6 3/4	21/32	326
50.00	49.90	8-5V50.00	2440.00	QDS10	7/32	5A	M°	6 3/4	23/32	466



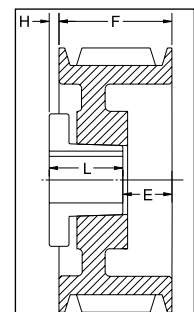
TYPE 1



TYPE 2



TYPE 5



TYPE 6

10 GROOVES

Dimensions

O.D.	Datum dia.	Part No.	List Price	Mult. Sym.	F = 7 3/16 inches					
					H	Type	B	L	E	Approx. Wt. (lbs)
8.00	7.90	10-5V8.00	252.00	QDS10	1 13/16	1B	E	2 5/8	2 3/4	32
8.50	8.40	10-5V8.50	272.00	QDS10	1 13/16	1B	E	2 5/8	2 3/4	38
9.00	8.90	10-5V9.00	300.00	QDS10	1 23/32	1B	F	3 5/8	1 27/32	46
9.25	9.15	10-5V9.25	304.00	QDS10	1 23/32	1B	F	3 5/8	1 27/32	48
9.75	9.65	10-5V9.75	360.00	QDS10	1 23/32	1B	F	3 5/8	1 27/32	54
10.30	10.20	10-5V10.30	372.00	QDS10	1 23/32	1B	F	3 5/8	1 27/32	61
10.90	10.80	10-5V10.90	384.00	QDS10	1 23/32	1B	F	3 5/8	1 27/32	69
11.30	11.20	10-5V11.30	440.00	QDS10	1 23/32	1B	F	3 5/8	1 27/32	73
11.80	11.70	10-5V11.80	480.00	QDS10	1 23/32	1W	F	3 5/8	1 27/32	77
12.50	12.40	10-5V12.50	500.00	QDS10	1 25/32	1W	J	4 1/2	29/32	93
13.20	13.10	10-5V13.20	580.00	QDS10	1 25/32	1W	J	4 1/2	29/32	100
14.00	13.90	10-5V14.00	640.00	QDS10	2 5/32	1W	J	4 1/2	17/32	90
15.00	14.90	10-5V15.00	720.00	QDS10	2 5/32	1W	J	4 1/2	17/32	98
16.00	15.90	10-5V16.00	780.00	QDS10	2 5/32	1A	J	4 1/2	17/32	99
18.70	18.60	10-5V18.70	860.00	QDS10	2 5/32	1A	J	4 1/2	17/32	123
21.20	21.10	10-5V21.20	960.00	QDS10	1 5/32	1A	J	4 1/2	1 17/32	139
23.60	23.50	10-5V23.60	1040.00	QDS10	7/32	1A	M°	6 3/4	7/32	245
28.00	27.90	10-5V28.00	1280.00	QDS10	7/32	1A	M°	6 3/4	7/32	256
31.50	31.40	10-5V31.50	1560.00	QDS10	7/32	1A	M°	6 3/4	7/32	329
37.50	37.40	10-5V37.50	1840.00	QDS10	7/32	1A	M°	6 3/4	7/32	356
50.00	49.90	10-5V50.00	2580.00	QDS10	9/32	1A	M°	6 3/4	5/32	556

P.D. for "5V" Belts = O.D. Type of sheave "T": A = arms; B = block; W = web

*Note: M-N-P-W bushings are standard mounting only for these parts.

For more details and additional products, see complete Baldor•Maska® Product Catalog or www.maskapulley.com