

Flanged Ball Valve, ANSI Class 150, Standard Port, 1-1/2" ~ 4"

41

Rev3

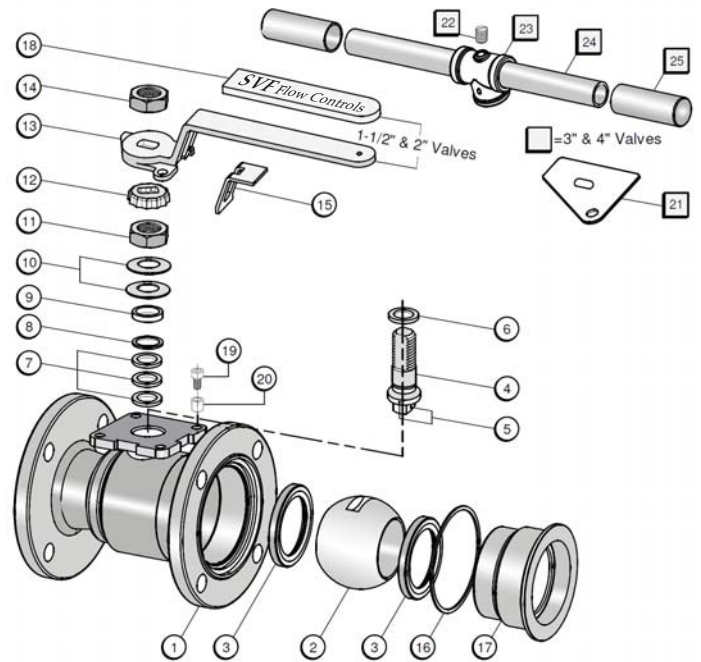
The SVF Series 41 Rev3 Flanged Ball Valves are high performance, standard port valves certified to API-607, and feature an ISO 5211 mounting pad for easy actuation. An OSHA compatible latch-lock handle comes standard, and a variety of seats and seals are available for a wide range of industrial applications.

SERIES 41 REV3 DESIGN FEATURES

- ✓ Standard ported valves certified to API-607, Anti-Static
- ✓ Standard NACE MR0175
- ✓ Live-loaded stem packing ensures seal-tight pressure containment even under thermal cycling
- ✓ Standard seat material is TFM1600™
- ✓ Optional SupraLon™ Seats for higher temperature, steam, and thermal fluid applications
- ✓ ISO 5211 mounting pad for easy automation
- ✓ Compatible with a full range of actuators and accessories
- ✓ Latch lock handle fully compatible with OSHA clamp for Lock-Out/Tag-Out



The Series 41 Rev3 Flanged Ball Valve is available with additional options. Contact SVF for more information.



MATERIALS OF CONSTRUCTION

ITEM	DESCRIPTION	MATERIALS SPECIFICATIONS (Additional options available)
1	Body	A351 CF8M, A216 WCB
2	Ball	A351 CF8M
3	Ball Seat	TFM1600™, SupraLon™
4	Stem	SUS316
5	Anti-Static Device	SUS316
6	Thrust Washer	SupraLon™
7	V-Ring Packing	GRAFOIL®, PTFE
8	Bushing	SUS304
9	Gland	SUS316
10	Belleville Washer	SUS301
11	Stem Nut	A194 8
12	Lock Tab	SUS304
13	Handle (1-1/2" ~ 2")	A351 CF8
14	Handle Nut (1-1/2" ~ 2")	A194-8
15	Lock Device (1-1/2" ~ 2")	SUS304
16	Body Gasket	GRAFOIL®, PTFE
17	End Cap	A351 CF8M, A216 WCB
18	Handle Sleeve (1-1/2" ~ 2")	VINYL PLASTIC
19	Stop Bolt	A193 B8
20	Stop Washer	SUS304
21	Triangular Stopper (3" ~ 4")	SUS304
22	Set Screw (3" ~ 4")	A193-B8
23	Pipe Handle Adapter (3" ~ 4")	A351 CF8
24	Pipe Handle (3" ~ 4")	SUS304
25	Pipe Handle Sleeve (3" ~ 4")	VINYL PLASTIC

SPECIFICATION STANDARDS OF COMPLIANCE

- Design - ASME B16.34, NACE MR0175
- Face to Face: ASME B16.10
- End Flange: ASME B16.5
- Wall Thickness: ASME B16.34
- Inspection & Testing: API 598, and optional API 6D
- Fire Safe: API 607, ISO 10497

What do you need today?™

HIGH PURITY
CleanFLOW
www.CleanFLOW.net

PRO-SPEC
 PROCESS SPECIFIC
WWW.PRO-SPEC.NET

QUALITY FLOWS
 THROUGH US

Specifications subject to change. Please visit www.SVF.net for the latest updates on this Data Sheet. All Data Sheets posted on our website supersede all prior publications. | Document #DDS-41r3-04/26/2010 • Series 41 Rev3 Data Sheet • 04/26/2010

www.SVF.net

SVF Flow Controls, Inc. • 13560 Larwin Circle • Santa Fe Springs, CA 90670 • Tel: 1.800.783.7836 • FAX: 562.802.3114
 Sales@SVF.net • Visit our website: www.SVF.net • © SVF Flow Controls, Inc. • Specifications subject to change without notice

Flanged Ball Valve, ANSI Class 150, Standard Port, 1-1/2" ~ 4"

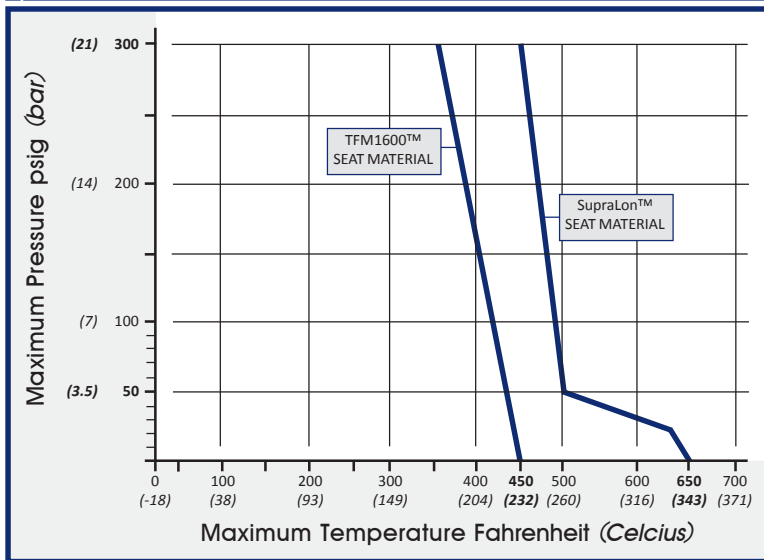
41
Rev3

DIMENSIONS, WEIGHT, Cv, TORQUE

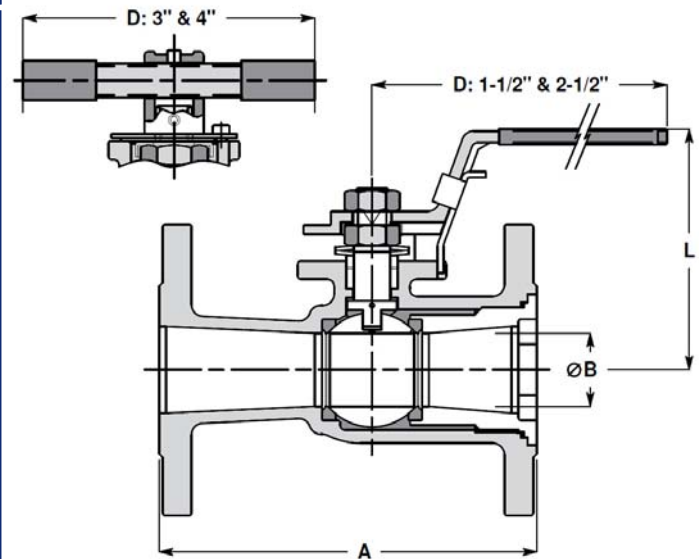
Torque* Tables

Size	A		B		D		L		Weight.		Cv	TFM1600™		SupraLon™	
	in.	mm	in.	mm	in.	mm	in.	mm	lbs	kg		in-lb _f	Nm	in-lb _f	Nm
1-1/2"	6.50	165	1.26	32	7.87	200	4.13	105	10	4.6	130	208	24	254	29
2"	7.00	178	1.50	38	7.87	200	4.49	114	15	6.8	200	299	34	368	42
3"	8.00	203	2.37	60	11.81	300	5.59	142	31	14.2	450	598	68	728	82
4"	9.00	229	2.99	76	15.75	400	7.66	195	48	22.0	600	988	112	1209	137

41 REV3 - PRESSURE/TEMPERATURE CHART



* At full differential pressure



HOW TO ORDER SERIES 41 REV3 BALL VALVES

SERIES	BODY, BALL & STEM	SEAT	BODY SEAL	REV DESIGNATION	SIZE
41 = Standard Port ANSI Class 150 Flanged	4 = Carbon Steel Body A216 WCB with 316 SS Ball - A351 CF8M and 316 SS Stem - SUS 316 6 = 316 Stainless Steel Body A351 CF8M with 316 SS Ball - A351 CF8M and 316 SS Stem - SUS 316	A = TFM1600™ S = SupraLon™	G = GRAFOIL® T = PTFE *NOTE: Valves with PTFE Body Seals & Stem Seals are not fire safe	R3 = Rev3	15= 1-1/2" 20= 2" 30= 3" 40= 4"
Order Example: (416AGR315)					
Example Description: Standard Port, 316 Stainless Steel Body, Ball & Stem, TFM1600™ Seat, GRAFOIL® Body Seal, Rev3, 1-1/2" Size					
41	6	A	G	R3	15

Flanged Ball Valve, ANSI Class 150, Full Port, Sizes 1/2" ~ 8"

B41
Rev3

The SVF Series B41 Rev3 Flanged Ball Valves are high performance, full ported valves certified to API-607 fire safe design, ISO Top Works for direct mounting of actuator and a selection of seats and seals for a wide range of industrial applications.

SERIES B41 REV3 DESIGN FEATURES

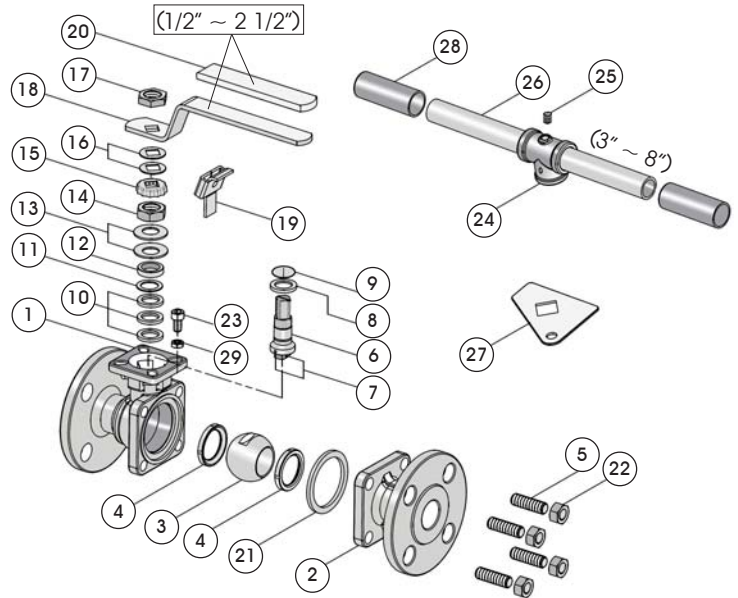
- ✓ Standard Fire Safe Certification to API 607, Anti-Static
- ✓ Standard NACE MR0175
- ✓ Built-In ISO 5211 direct mounting pad for easy automation
- ✓ Standard seat material is TFM1600™
- ✓ Optional SupraLon™ Seats for higher temperature, steam, and thermal fluid applications
- ✓ Latch lock handle fully compatible with OSHA clamp for Lock-Out/Tag-Out
- ✓ Live-loaded stem packing ensures seal-tight pressure containment even under thermal cycling



Contact SVF for Gear Operator information.

MATERIALS OF CONSTRUCTION

ITEM	DESCRIPTION	MATERIALS SPECIFICATIONS (Additional options available)
1	Body	A351 CF8M A216 WCB
2	End Cap	A351 CF8M A216 WCB
3	Ball	A351 CF8M
4	Ball Seat	TFM1600™, SupraLon™
5	Body Bolt	A193 B8
6	Stem	SUS316
7	Anti-Static Device	SUS316
8	Thrust Washer	SupraLon™
9	O-Ring	VITON®
10	V-Ring Packing	GRAFOIL®, PTFE
11	Bushing	SUS304
12	Gland	SUS316
13	Belleville Washer	SUS301
14	Stem Nut	A194-8
15	Lock Tab	SUS304
16	Handle Gland	SUS304
17	Handle Nut	A194-8
18	Handle (1/2" ~ 2-1/2")	SUS304
19	Lock Device (1/2" ~ 2-1/2")	SUS304
20	Handle Sleeve (1/2" ~ 2-1/2")	VINYL PLASTIC
21	Body Gasket	316SS+GRAFOIL®, PTFE
22	Bolt Nut	A194-8
23	Stop Bolt	A193 B8
24	Handle Adapter (3" ~ 8")	A351 CF8
25	Set Screw (3" ~ 8")	A193 B8
26	Pipe Handle (3" ~ 8")	SUS304
27	Triangular Stopper (3" ~ 8")	SUS304
28	Pipe Handle Sleeve (3" ~ 8")	VINYL PLASTIC
29	Stop Nut	A194-8



SPECIFICATION STANDARDS OF COMPLIANCE

- Design - ASME B16.34, NACE MR0175
- Face to Face: ASME B16.10
- End Flange: ASME B16.5
- Wall Thickness: ASME B16.34
- Inspection & Testing: API 598, and optional API 6D
- Fire Safe: API 607, ISO 10497

What do you need today?™

HIGH PURITY
CleanFLOW
 www.CleanFLOW.net

PRO-SPEC
 PROCESS SPECIFIC
 WWW.PRO-SPEC.NET

QUALITY FLOWS
 THROUGH US

Subject to revisions. Please visit www.SVF.net for the latest updates on this Data Sheet. All Data Sheets posted on our website supersede all prior publications • [Document #DDS-B41r3-04/26/2010 • Series B41 Rev3 Data Sheet - 04/26/2010]

www.SVF.net

SVF Flow Controls, Inc. • 13560 Larwin Circle • Santa Fe Springs, CA 90670 • Tel: 1.800.783.7836 • FAX: 562.802.3114
 Sales@SVF.net • Visit our website: www.SVF.net • © SVF Flow Controls, Inc. • Specifications subject to change without notice



Flanged Ball Valve, ANSI Class 150, Full Port, Sizes 1/2" ~ 8"

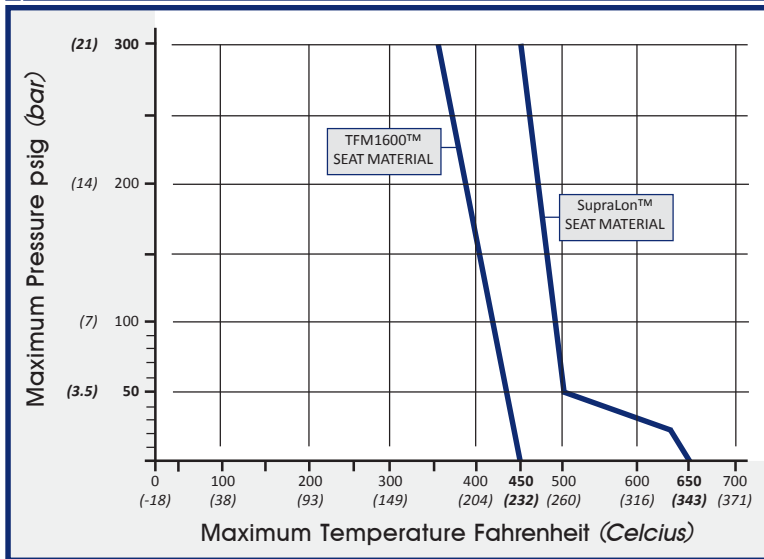
B41
Rev3

DIMENSIONS, WEIGHT, C_v, TORQUE

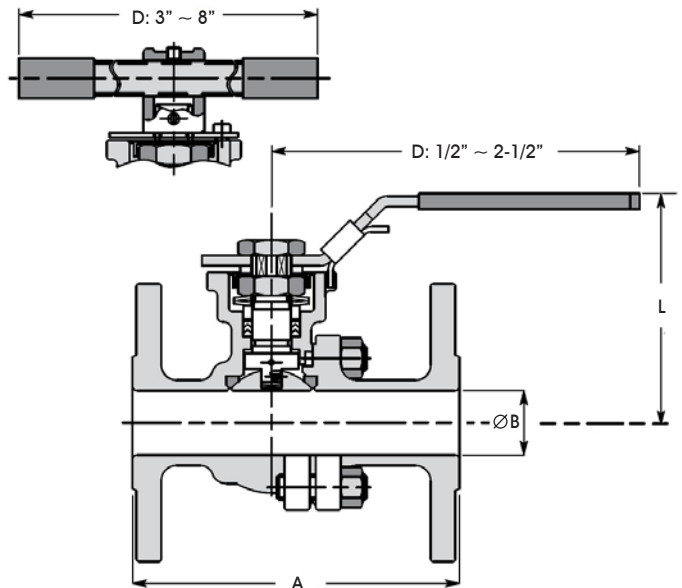
Torque* Tables

Size	A		B		D		L		Weight.		C _v	TFM1600™		SupraLon™	
	in.	mm	in.	mm	in.	mm	in.	mm	lbs	kg		in-lb _f	Nm	in-lb _f	Nm
1/2"	4.25	108	0.59	15	5.70	145	3.07	78	4	1.8	25	72	8	91	10
3/4"	4.62	117	0.79	20	5.70	145	3.31	84	5	2.2	45	81	9	98	11
1"	5.00	127	0.98	25	6.90	175	3.52	89	6	2.7	85	130	15	172	19
1-1/2"	6.50	165	1.50	38	7.50	190	4.21	107	13	5.9	200	299	34	368	42
2"	7.00	178	1.97	50	7.50	190	4.41	112	24	10.9	320	371	42	460	52
2-1/2"	7.50	190	2.48	63	10.45	265	5.91	150	30	13.6	450	598	68	728	82
3"	8.00	203	2.99	76	11.80	300	6.30	160	38	17.4	600	988	112	1209	137
4"	9.00	229	3.94	100	15.75	400	8.03	204	69	31.5	1100	1508	171	1846	209
6"	15.50	394	5.91	150	31.50	800	10.85	275	161	73.6	2600	4160	470	5200	588
8"	18.00	457	7.87	200	31.50	800	11.00	279	277	126.6	4200	6500	735	8060	911

B41 REV3 - PRESSURE/TEMPERATURE CHART



* At full differential pressure



HOW TO ORDER SERIES B41 REV3 BALL VALVES

SERIES	BODY, BALL & STEM	SEAT	BODY SEAL	REV DESIGNATION	MOUNT	SIZE
B41 = Full Port ANSI Class 150 Flanged	4 = Carbon Steel Body A216 WCB with 316 SS Ball A351 CF8M & 316 SS Stem SUS 316	A = TFM1600™ S = SupraLon™	G = GRAFOIL® T = PTFE*	R3 = Rev3	P = Direct Mount	05 = 1/2"
	6 = 316 Stainless Steel Body A351 CF8M with 316 SS Ball A351 CF8M & 316 SS Stem SUS 316					25 = 2-1/2"
						07 = 3/4"
						30 = 3"
						40 = 4"
						60 = 6"
						80 = 8"

***NOTE: Valves with PTFE Body Seals & Stem Seals are not fire safe**

Order Example: (B416AGR3P05)

Example Description: Full Port, 316 Stainless Steel Body, Ball & Stem, TFM1600™ Seat, GRAFOIL® Body Seal, Rev3, Direct Mount, 1/2" Size

B41	6	A	G	R3	P	05
------------	----------	----------	----------	-----------	----------	-----------



Notice Of Product Change/New Product Introduction

Series 41, Class 150 1-Pc Flanged Valve

SCOPE	ITEM/COMPONENT	REV.2	New REV.3
SIZE	SIZE RANGE	1-1/2" ~ 6"	1-1/2" ~ 4"
STEM/MOUNTING PAD	MOUNTING PAD BOLT CIRCLE	ISO 5211	ISO 5211
	STEM DESIGN	DOUBLE D OR SQUARE	DOUBLE D
	DIRECT MOUNT DESIGN	NO	NO
LOCKING DEVICE	LOCKING DEVICE TYPE	LOCKING PLATE	LATCH HANDLE
	EQUIPPED TO FIT OSHA CLAMP	YES	YES
SOFT COMPONENTS	SEAT COMPOSITION	TFM1600 OR SupraLon™	TFM1600 OR SupraLon™
	SEAL COMPOSITION	316SS + GRAFOIL®, GRAFOIL® OR PTFE	316SS + GRAFOIL® OR PTFE
TAGS/MARKINGS	TAG COLOR	RED	GREEN
	TAG LOCATION	TACK WELDED ONTO ONE SIDE OF THE FLANGE	TACK WELDED ONTO ONE SIDE OF THE FLANGE
	PART NUMBER	EXAMPLE: 4166AG150R220	EXAMPLE: 416AGR320
TORQUE	OPERATING TORQUE @ MAX. PRESSURE	REFER TO CHART ON DATA SHEET	REFER TO CHART ON DATA SHEET
OTHER	PARTS INTERCHANGEABLE	NO	NO
BALL/SEAT PLUG	RETAINER SYSTEM	SIDE ENTRY LUGS	THREADED PLUG (ELIMINATES THE NEED FOR SIDE ENTRY LUGS)

Series B41, Class 150 2-Pc Flanged Valve

SCOPE	ITEM/COMPONENT	REV.2	New REV.3
SIZE	SIZE RANGE	1/2" ~ 10"	1/2" ~ 8"
STEM/MOUNTING PAD	MOUNTING PAD BOLT CIRCLE	ISO 5211	ISO 5211
	STEM DESIGN	DOUBLE D OR SQUARE	SQUARE
	DIRECT MOUNT DESIGN	NO	YES
LOCKING DEVICE	LOCKING DEVICE TYPE	LOCKING PLATE	LATCH HANDLE
	EQUIPPED TO FIT OSHA CLAMP	YES	YES
SOFT COMPONENTS	SEAT COMPOSITION	TFM1600 OR SupraLon™	TFM1600 OR SupraLon™
	SEAL COMPOSITION	316SS + GRAFOIL® OR PTFE	316SS + GRAFOIL® OR PTFE
TAGS/MARKINGS	TAG COLOR	RED	GREEN
	TAG LOCATION	TACK WELDED ONTO ONE SIDE OF THE FLANGE	TACK WELDED ONTO ONE SIDE OF THE FLANGE
	PART NUMBER	EXAMPLE: B4166AG150R220	EXAMPLE: B416AGR320
TORQUE	OPERATING TORQUE @ MAX. PRESSURE	REFER TO CHART ON DATA SHEET	REFER TO CHART ON DATA SHEET
OTHERS	PARTS INTERCHANGEABLE	NO	NO