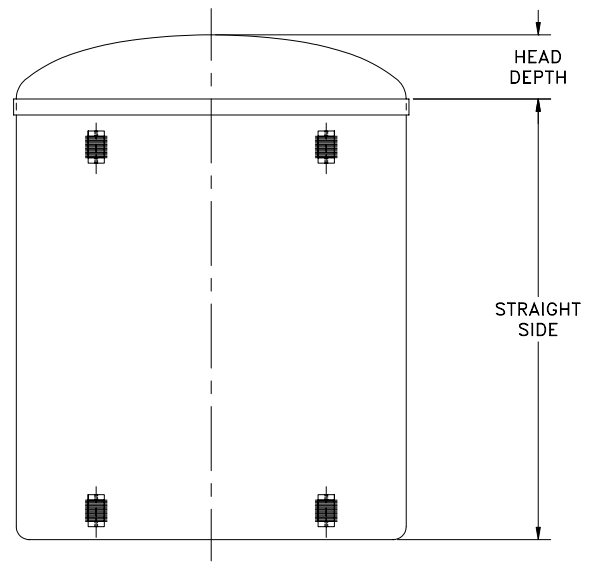


C-OFV



C-CFV

CAPACITIES (U.S. Gallons)

	ONE Section				STRAIGHT SIDE LENGTH (Inches)								TWO Section		
	24	30	36	42	48	54	60	66	72	78	84	90	96	108	120
24	45	57	68	80	92	103	115	127	139	149	161	173	184	208	231
30	73	91	110	129	148	167	186	205	224	243	263	282	301	334	372
36	95	120	144	169	194	220	245	271	297	323	349	376	403	441	492
42	140	176	212	248	285	321	358	395	431	469	506	543	581	644	717
48	175	220	265	310	356	401	447	494	540	587	633	681	728	804	896
54	236	296	355	415	474	534	593	653	712	772	831	891	950	1069	1188
60	273	342	412	482	552	622	693	764	835	907	979	1051	1124	1270	1417
66	353	442	531	620	709	798	887	975	1064	1153	1242	1331	1420	1597	1775
72	403	505	607	710	813	917	1021	1125	1230	1335	1440	1546	1652	1866	2081
84	555	695	836	978	1120	1262	1405	1549	1693	1837	1982	2128	2274	2567	2862
90	658	823	989	1154	1319	1484	1650	1815	1980	2145	2311	2476	2641	2972	3302
96	727	911	1095	1280	1465	1651	1837	2023	2210	2398	2586	2775	2964	3343	3725
108	897	1124	1350	1578	1805	2033	2262	2491	2720	2950	3180	3411	3643	4106	4572
120	1143	1432	1722	2012	2302	2593	2885	3178	3471	3764	4059	4354	4649	5242	5838
132	1416	1772	2127	2482	2838	3193	3549	3904	4260	4615	4971	5326	5681	6392	7103
138	1515	1897	2280	2663	3046	3431	3815	4201	4587	4973	5360	5748	6136	6915	7695
144	1676	2099	2522	2947	3372	3798	4225	4652	5081	5510	5940	6372	6803	7670	8539
156	1970	2467	2963	3460	3956	4452	4949	5445	5942	6438	6935	7431	7928	8921	9913
168	2183	2734	3287	3840	4394	4949	5504	6061	6618	7176	7734	8294	8854	9977	11102

Tank Nominal DIAMETER (Inches)

DIA. Inches	Gallons Per Inch	Head Depth
24	1.93	4
30	3.14	5
36	4.19	6
42	6.06	7
48	7.58	8
54	9.90	9
60	11.80	10
66	14.80	11
72	17.46	12
84	24.02	14
90	27.53	15
96	31.66	16
108	38.72	18
120	49.49	20
132	59.22	22
138	64.82	23
144	72.39	24
156	82.68	26
168	93.08	28

General Notes:

1. Diameters smaller than 72" are Contact Molded per ASTM D-4097.
2. Diameters 72" and larger are Filament Wound per ASTM D-3299.
3. Heavy powder coated carbon steel lifting lugs, as required for handling.

OPTIONAL FEATURES

- Integral FLAT Top Head
- Flat Cover for Open Top (1 pc. / 2 pc. / 3 pc.)

CAPACITIES (U.S. Gallons)

Tank Nominal DIAMETER (Inches)	STRAIGHT SIDE LENGTH (Inches)															
	ONE Section												TWO Section			
	132	144	168	192	204	216	240	264	288	312	336	360	384	408	444	
24	255	278														
30	410	449	526	604												
36	543	595	700	807												
42	790	864	1013	1163												
48	989	1081	1268	1457												
54	1307	1426	1664	1902	2021	2140	2378	2616	2854	3092	3329	3567	3805	4043	4400	
60	1530	1673	1960	2249	2394	2541	2835									
66	1953	2131	2486	2842	3019	3197	3552	3908	4263	4619	4974	5330	5685	6041	6574	
72	2297	2515	2883	3307	3520	3734	4164	4597	5032							
84	3159	3459	3967	4550	4842	5136	5727	6321	6920							
90	3633	3963	4624	5285	5615	5946	6607	7268	7929	8590	9251	9912	10573	11234	12225	
96	4108	4493	5270	6055	6450	6689	7452	8219	8990	9764	10543	11325	12112	12903		
108	5040	5509	6453	7405	7884	8364	9147	10082	11021	11964	12910	13859	14813	15770		
120	6436	7036	8244	9463	10076	10691	11681	12877	14077	15283	16494	17710	18931	20157		
132	7814	8525	9947	11369	12080	12790	14212	15634	17056	18478	19899	21321	22743	24165	26298	
138	8478	9263	10841	12428	13225	13836	15397	16963	18533	20109	21689	23273	24863			
144	9412	10289	12051	13828	14721	15617	17085	18831	20584	22343	24109	25882	27662	29448	32141	
156	10906	11899	13885	15871	16864	17857	19843	21828	23814	25800	27786	29772	31757	33743	36722	
168	12231	13364	15637	17724	18846	19970	22221	24479	26744	29014	31291					