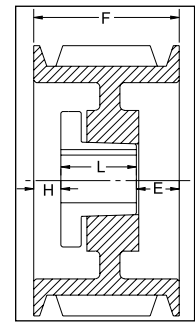


5V SECTION

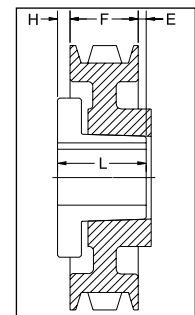
3 GROOVES

Dimensions

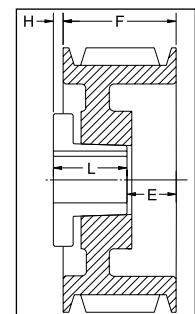
O.D.	Datum dia.	Part No.	List Price	Mult. Sym.	F = 2 3/8 inches					
					H	Type	B	L	E	Approx. Wt. (lbs)
4.40	4.30	3-5V4.40^{1*}	79.00	QDS08	11/16	11B	SDS	1 5/16	1 3/4	4.3
4.65	4.55	3-5V4.65^{1*}	85.00	QDS08	11/16	11B	SDS	1 5/16	1 3/4	5.2
4.90	4.80	3-5V4.90[*]	91.00	QDS08	3/8	1B	SDS	1 5/16	11/16	4.9
5.20	5.10	3-5V5.20	97.00	QDS08	3/8	1B	SDS	1 5/16	11/16	6.1
5.50	5.40	3-5V5.50	103.00	QDS08	5/16	1B	SDS	1 5/16	3/4	6.4
5.90	5.80	3-5V5.90	109.00	QDS08	5/16	1B	SDS	1 5/16	3/4	8.2
6.30	6.20	3-5V6.30	115.00	QDS08	1/4	1B	SK	1 7/8	1/4	9.0
6.70	6.60	3-5V6.70	121.00	QDS08	1/4	1B	SK	1 7/8	1/4	12.7
7.10	7.00	3-5V7.10	128.00	QDS08	1/16	6B	SF	2	7/16	12.3
7.50	7.40	3-5V7.50	134.00	QDS08	1/16	6B	SF	2	7/16	13.8
8.00	7.90	3-5V8.00	142.00	QDS08	1/16	6B	SF	2	7/16	16.2
8.50	8.40	3-5V8.50	146.00	QDS08	1/16	6B	SF	2	7/16	18.3
9.00	8.90	3-5V9.00	150.00	QDS08	1/16	6B	SF	2	7/16	20.6
9.25	9.15	3-5V9.25	156.00	QDS08	1/16	6W	SF	2	7/16	20.2
9.75	9.65	3-5V9.75	162.00	QDS08	1/16	6W	SF	2	7/16	20.8
10.30	10.20	3-5V10.30	172.00	QDS08	1/16	6W	SF	2	7/16	20.5
10.90	10.80	3-5V10.90	176.00	QDS08	1/16	6W	SF	2	7/16	23.4
11.30	11.20	3-5V11.30	180.00	QDS08	1/16	6A	SF	2	7/16	22.7
11.80	11.70	3-5V11.80	194.00	QDS08	1/16	6A	SF	2	7/16	24.4
12.50	12.40	3-5V12.50	202.00	QDS08	11/16	6A	E	2 5/8	7/16	31.1
13.20	13.10	3-5V13.20	212.00	QDS08	11/16	6A	E	2 5/8	7/16	32.2
14.00	13.90	3-5V14.00	258.00	QDS08	11/16	6A	E	2 5/8	7/16	35.5
15.00	14.90	3-5V15.00	274.00	QDS08	11/16	6A	E	2 5/8	7/16	38.3
16.00	15.90	3-5V16.00	282.00	QDS08	11/16	6A	E	2 5/8	7/16	40.1
18.70	18.60	3-5V18.70	328.00	QDS08	5/16	6A	E	2 5/8	1/16	46.6
21.20	21.10	3-5V21.20	440.00	QDS08	11/16	6A	E	2 5/8	7/16	57.2
23.60	23.50	3-5V23.60	500.00	QDS08	11/32	6A	E	2 5/8	3/32	73.0
28.00	27.90	3-5V28.00	540.00	QDS08	5/16	6A	E	2 5/8	1/16	97.0
31.50	31.40	3-5V31.50	920.00	QDS10	31/32	5A	F	3 5/8	9/32	128.0
37.50	37.40	3-5V37.50	1180.00	QDS10	31/32	5A	F	3 5/8	9/32	158.0
50.00	49.90	3-5V50.00	1780.00	QDS10	31/32	5A	F	3 5/8	9/32	218.0



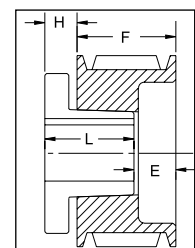
TYPE 1



TYPE 5



TYPE 6



TYPE 11

P.D. for "5V" Belts = O.D.

¹ Reverse mount only.

* Mounting bolts are supplied by Baldor with these parts.

Type of sheave "T": A = arms; B = block; W = web