

5V SECTION

6 GROOVES

Dimensions

O.D.	Datum dia.	Part No.	List Price	Mult. Sym.	F = 4 7/16 inches					
					H	Type	B	L	E	Approx. Wt. (lbs)
4.40	4.30	6-5V4.40*	114.00	QDS08	11/16	11B	SD	1 13/16	3 5/16	8.4
4.65	4.55	6-5V4.65*	120.00	QDS08	11/16	11B	SD	1 13/16	3 5/16	9.3
4.90	4.80	6-5V4.90*	126.00	QDS08	5/8	1B	SD	1 13/16	2	8.9
5.20	5.10	6-5V5.20	132.00	QDS08	5/8	1B	SD	1 13/16	2	10.9
5.50	5.40	6-5V5.50	138.00	QDS08	5/8	1B	SD	1 13/16	2	13.4
5.90	5.80	6-5V5.90	144.00	QDS08	1/2	1B	SK	1 7/8	2 1/16	12.8
6.30	6.20	6-5V6.30	150.00	QDS08	1/2	1B	SK	1 7/8	2 1/16	15.3
6.70	6.60	6-5V6.70	154.00	QDS08	13/16	1B	SF	2	1 5/8	16.1
7.10	7.00	6-5V7.10	160.00	QDS08	9/16	1B	SF	2	1 7/8	18.8
7.50	7.40	6-5V7.50	176.00	QDS08	9/16	1B	SF	2	1 7/8	20.8
8.00	7.90	6-5V8.00	186.00	QDS08	9/16	1B	E	2 5/8	1 1/4	22.3
8.50	8.40	6-5V8.50	198.00	QDS08	9/16	1B	E	2 5/8	1 1/4	27.1
9.00	8.90	6-5V9.00	220.00	QDS08	9/16	1B	E	2 5/8	1 1/4	30.5
9.25	9.15	6-5V9.25	224.00	QDS08	9/16	1B	E	2 5/8	1 1/4	32.2
9.75	9.65	6-5V9.75	228.00	QDS08	9/16	1B	E	2 5/8	1 1/4	36.2
10.30	10.20	6-5V10.30	248.00	QDS08	9/16	1W	E	2 5/8	1 1/4	34.4
10.90	10.80	6-5V10.90	260.00	QDS08	9/16	1W	E	2 5/8	1 1/4	36.4
11.30	11.20	6-5V11.30	260.00	QDS08	9/16	1W	E	2 5/8	1 1/4	39.3
11.80	11.70	6-5V11.80	262.00	QDS08	9/16	1W	E	2 5/8	1 1/4	40.2
12.50	12.40	6-5V12.50	320.00	QDS08	17/32	1W	F	3 5/8	9/32	54.2
13.20	13.10	6-5V13.20	342.00	QDS08	17/32	1W	F	3 5/8	9/32	58.0
14.00	13.90	6-5V14.00	384.00	QDS08	17/32	1W	F	3 5/8	9/32	59.9
15.00	14.90	6-5V15.00	424.00	QDS08	17/32	1A	F	3 5/8	9/32	60.0
16.00	15.90	6-5V16.00	464.00	QDS08	17/32	1A	F	3 5/8	9/32	64.7
18.70	18.60	6-5V18.70	520.00	QDS08	3/32	1A	F	3 5/8	23/32	80.5
21.20	21.10	6-5V21.20	590.00	QDS08	7/32	6A	F	3 5/8	1 1/32	96.3
23.60	23.50	6-5V23.60	660.00	QDS08	15/32	6A	J	4 1/2	13/32	133.0
28.00	27.90	6-5V28.00	740.00	QDS08	15/32	6A	J	4 1/2	13/32	179.0
31.50	31.40	6-5V31.50	1180.00	QDS10	15/32	6A	J	4 1/2	13/32	198.0
37.50	37.40	6-5V37.50	1440.00	QDS10	15/32	6A	J	4 1/2	13/32	239.0
50.00	49.90	6-5V50.00	2220.00	QDS10	1 13/32	5A	M*	6 3/4	29/32	386.0

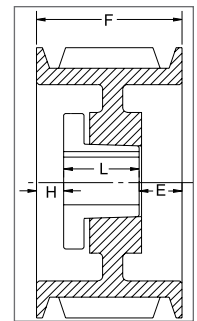
P.D. for "5V" Belts = O.D.

*Note: M-N-P-W bushings are standard mounting only for these parts.

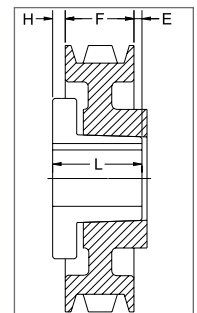
¹ Reverse mount only.

* Mounting bolts are supplied by Baldor with these parts.

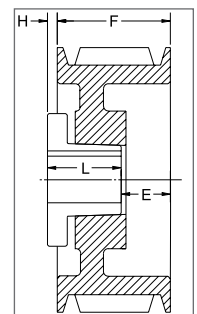
Type of sheave "T": A = arms; B = block; W = web



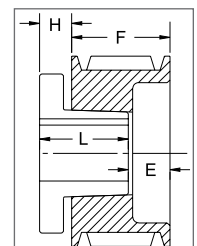
TYPE 1



TYPE 5



TYPE 6



TYPE 11

Gearmotors and Gear Products

PT Components

Motor Accessories

Grinders

Generators

Servo Motors and Controls

Mod Express

Baldor Education Workshops

Classifications and Sales Offices

EISA Compliance Table & Index