

“A/B” COMBINATION

6 GROOVES

Dimensions

Datum dia.		O.D.	Part No.	List Price	Mult. Sym.	F = 4 3/4 inches					
“A” Belts	“B” Belts					H	Type	B	L	E	Approx. Wt. (lbs)
3.0	3.4	3.75	6B34^{1*}	98.00	QDS07	1 3/32	10B	SD	1 13/16	4 1/32	6
3.2	3.6	3.95	6B36^{1*}	100.00	QDS07	1 3/32	10B	SD	1 13/16	4 1/32	7
3.4	3.8	4.15	6B38^{1*}	102.00	QDS07	1 3/32	10B	SD	1 13/16	4 1/32	7
3.6	4.0	4.35	6B40^{1*}	104.00	QDS07	11/16	11B	SD	1 13/16	3 5/8	7
3.8	4.2	4.55	6B42^{1*}	106.00	QDS07	11/16	11B	SD	1 13/16	3 5/8	8
4.0	4.4	4.75	6B44^{1*}	110.00	QDS07	11/16	11B	SD	1 13/16	3 5/8	9
4.2	4.6	4.95	6B46*	112.00	QDS07	5/8	1B	SD	1 13/16	2 5/16	9
4.4	4.8	5.15	6B48	114.00	QDS07	5/8	1B	SD	1 13/16	2 5/16	10
4.6	5.0	5.35	6B50	116.00	QDS07	5/8	1B	SD	1 13/16	2 5/16	11
4.8	5.2	5.55	6B52	118.00	QDS07	5/8	1B	SD	1 13/16	2 5/16	11
5.0	5.4	5.75	6B54	120.00	QDS07	1/2	1B	SK	1 7/8	2 3/8	11
5.2	5.6	5.95	6B56	122.00	QDS07	1/2	1B	SK	1 7/8	2 3/8	13.4
5.4	5.8	6.15	6B58	124.00	QDS07	1/2	1B	SK	1 7/8	2 3/8	15.5
5.6	6.0	6.35	6B60	126.00	QDS07	1/2	1B	SK	1 7/8	2 3/8	15
5.8	6.2	6.55	6B62	130.00	QDS07	1/2	1B	SK	1 7/8	2 3/8	15
6.0	6.4	6.75	6B64	134.00	QDS07	1/2	1B	SK	1 7/8	2 3/8	16
6.2	6.6	6.95	6B66	138.00	QDS07	1/2	1B	SK	1 7/8	2 3/8	17
6.4	6.8	7.15	6B68	142.00	QDS07	1/2	1B	SK	1 7/8	2 3/8	18
6.6	7.0	7.35	6B70	150.00	QDS07	7/8	1B	SF	2	1 7/8	19
7.0	7.4	7.75	6B74	204.00	QDS07	7/8	1B	SF	2	1 7/8	20
7.6	8.0	8.35	6B80	208.00	QDS07	7/8	1W	SF	2	1 7/8	24
8.2	8.6	8.95	6B86	220.00	QDS07	7/8	1W	SF	2	1 7/8	26
9.0	9.4	9.75	6B94	230.00	QDS07	7/8	1W	SF	2	1 7/8	30
10.6	11.0	11.35	6B110	248.00	QDS07	7/8	1A	SF	2	1 7/8	30
12.0	12.4	12.75	6B124	276.00	QDS07	7/8	1A	SF	2	1 7/8	37
13.2	13.6	13.95	6B136	280.00	QDS07	1 3/32	1A	SF	2	1 21/32	39
15.0	15.4	15.75	6B154	300.00	QDS07	1 3/32	1A	SF	2	1 21/32	51.4
15.6	16.0	16.35	6B160	328.00	QDS07	7/8	1A	SF	2	1 7/8	54.6
18.0	18.4	18.75	6B184	348.00	QDS07	1 3/32	1A	SF	2	1 21/32	59
19.6	20.0	20.35	6B200	464.00	QDS07	3/16	1A	E	2 5/8	1 15/16	96.9
24.6	25.0	25.35	6B250	580.00	QDS07	5/16	1A	E	2 5/8	1 13/16	120
29.6	30.0	30.35	6B300	780.00	QDS07	5/16	1A	E	2 5/8	1 13/16	151
37.6	38.0	38.35	6B380	1120.00	QDS07	5/16	1A	E	2 5/8	1 13/16	157

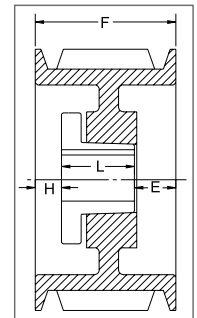
P.D. for “A” (4L) Belts = Datum Dia. + .35” = O.D. - .40

P.D. for “B” (5L) Belts = O.D.

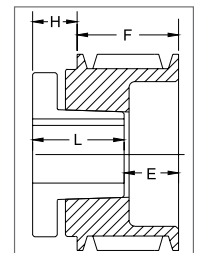
¹ Reverse mount only.

* Mounting bolts are supplied by Baldor with these parts.

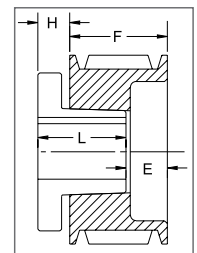
Type of sheave “T”: A = arms; B = block; W = web



TYPE 1



TYPE 10



TYPE 11