

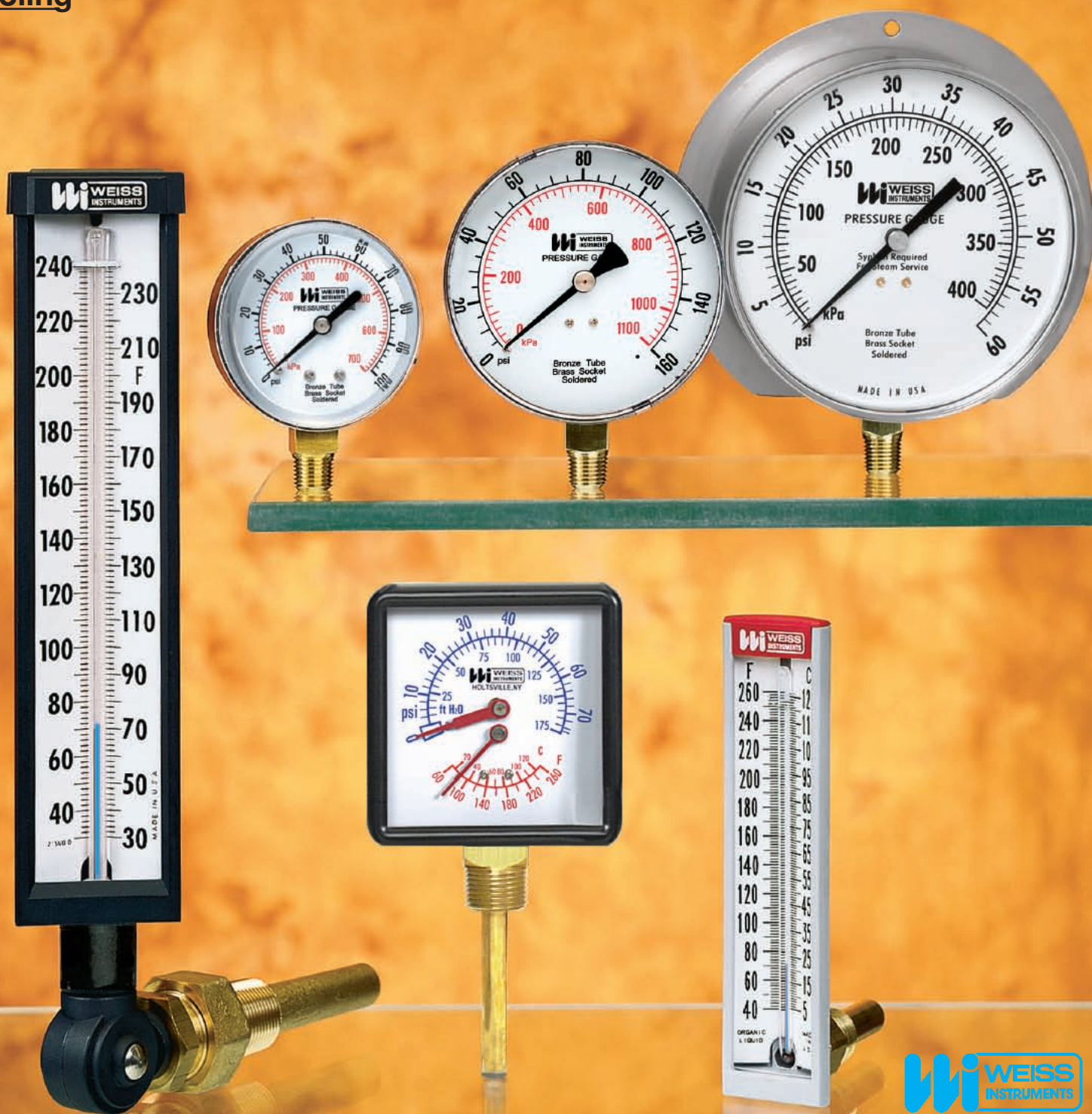
WEISS INSTRUMENTS

Plumbing

Heating

Cooling

Temperature, Pressure Instruments



Throughout the 20th century, the Weiss name has been synonymous with quality and reliability in instrumentation. Some of the products we have manufactured for more than 127 years are proudly illustrated in this catalog, dedicated to your requirements in the plumbing, heating and cooling industry. Recent products such as our line of Vari-angle Digital Thermometers, fast becoming the Contractor choice, are also available to you.

Whether you require instruments for temperature or pressure monitoring, the Weiss line offers a choice. Our commitment to quality extends well beyond the products we provide. Each day we strive to offer our customers responsive service and reliable deliveries, qualities so necessary in today's business climate. Weiss understands the trends of today's market and we look forward to proving our ability to react to the daily challenge.

Old World Craftsmanship . . . NEW WORLD TECHNOLOGY
Since 1882

INDEX

	Page
Industrial Thermometers	3
Six Inch and Thrift Line Industrial Thermometers	4
Six Inch Hot & Chilled Water, Hot Water Bimetal and General Purpose Thermometers	5
Bimetal Dial Thermometers	6
Vapor Actuated Dial Thermometers	7
Digital Vari-angle Thermometers	8
Trade Line and HVAC Pressure Gauges	9
Industrial Pressure Gauges	10
Process Pressure Gauges	11
Stainless Steel Industrial Gauges	12
Low Pressure Diaphragm Gauges and Tri-o-meters	13
Diaphragm Seals	14
Gauge Accessories and Temperature/Pressure Test Plugs	15

INDUSTRIAL GLASS THERMOMETERS

The Weiss 7" and 9" Vari-angle® is molded of GE Valox® polyester, 40% glass/mineral reinforced. This particular material has excellent strength, impact and stiffness properties which makes it perfect for the toughest applications. Some of the uses are process piping, tanks, pipelines in building construction, boilers and air ducts. The Vari-angle is a versatile thermometer that can be adjusted easily for optimum readability. Furnished in ranges up to and including 300°F.

® Vari-angle is a registered trademark of Weiss Instruments, Inc.

FILL: Weiss "Blue Ribbon Liquid" is non-toxic and environmentally safe.

CASE: Modern V-shape design with parts molded of GE Valox polyester, in black textured finish. Heavy glass protected front firmly secured against rattles by spring action.

STEM: For 3 1/2" stems only and ranges up to and including 300°F, the stem material is a precision die cast Zamac alloy. For ranges above 300°F, bulb chamber is a precision machined aluminum alloy with copper plated steel stem extension. *For Separable Socket connections only.*

® Valox is a registered trademark of the General Electric Co.



ari-angle AIR DUCT THERMOMETERS

9" SCALE	CAT NO.
3 1/2" STEM	9VD35
6" STEM	9VD6
9" STEM	9VD9
12" STEM	9VD12

ADD RANGE CODE FROM RANGE TABLE LISTING. **EX: 9VD6-180 (RANGE 30-180F)** ABOVE CAT. NUMBERS INCLUDE A REVERSIBLE DUCT MOUNTING FLANGE.

ari-angle INDUSTRIAL THERMOMETERS

7" SCALE	CAT NO.
3 1/2" STEM	7VU35
6" STEM	7VU6
9" STEM	7VU9
12" STEM	7VU12

ADD RANGE CODE FROM RANGE TABLE LISTING. **EX: 9VU35-240 (RANGE 30-240F)** ABOVE CATALOG NUMBERS **DO NOT INCLUDE SOCKETS** - ORDER SEPARATELY FROM THERMOWELL TABLE LISTING.

9" SCALE	CAT NO.
3 1/2" STEM	9VU35
6" STEM	9VU6
9" STEM	9VU9
12" STEM	9VU12

ari-angle ALUMINUM IND. THERMOMETERS

9" SCALE	CAT NO.
3 1/2" STEM	A9VU35
6" STEM	A9VU6
9" STEM	A9VU9
12" STEM	A9VU12

ADD RANGE CODE FROM RANGE TABLE LISTING. **EX: 9VD6-180 (RANGE 30-180F)** ABOVE CAT. NUMBERS INCLUDE A REVERSIBLE DUCT MOUNTING FLANGE.

°F RANGES	SCALE DIV.	RANGE CODE
40-0-110°F	2°	110
0-120°F	1°	120
0-160°F	2°	160
30-180°F	2°	180
30-240°F	2°	240
30-300°F	5°	300
50-400°F	5°	400
50-550°F	5°	500

All Ranges 400°F (200°C) and higher are furnished in Aluminum Case.

THERMOWELLS AND ACCESSORIES

STEM LENGTH	BRASS CAT NO.	304SS CAT NO.	316SS CAT NO.	NPT	INSERTION (U)	LAG EXTENSION (L)
3 1/2"	E35-75BS	E35-75SS	E35-75316SS	3/4	2 1/2	—
6"	ER6-75BS	ER6-75SS	ER6-75316SS	3/4	5	—
9"	ER9-75BS	ER9-75SS	ER9-75316SS	3/4	8	—
12"	ER12-75BS	ER12-75SS	ER12-75316SS	3/4	11	—
3 1/2"	ESS35-50BS	ESS35-50SS	ESS35-50316SS	1/2	2	1
3 1/2"	ESS35-75BS	ESS35-75SS	ESS35-75316SS	3/4	2	1
6"	EN6-75BS	EN6-75SS	EN6-75316SS	3/4	2 1/2	2 1/2
9"	ENS9-75BS	ENS9-75SS	ENS9-75316SS	3/4	5 1/2	2 1/2
12"	ENS12-75BS	ENS12-75SS	ENS12-75316SS	3/4	8 1/2	2 1/2

Catalog No. ECC - Brass Cap and Chain Assembly for Test Well

Other Lengths, Materials and NPT Sizes Available - Consult Factory.

SIX INCH INDUSTRIAL THERMOMETERS



The Weiss 6" Navy Class Thermometer is compactly designed, ruggedly constructed and has excellent readability. The blue-reading liquid-in-glass tube maintains accuracy despite vibrations and shock.

This economical thermometer is built for general hydronic applications such as chilled and hot water lines and all small piping networks. It is especially adaptable to equipment operating under continuous vibrating conditions.

FILL: Weiss "Blue Ribbon Liquid" is non-toxic and environmentally safe.

CASE: Attractive modern design; V-shaped gray Valox case. Wide angle construction allows full scale width for easy reading.

STEM ASSEMBLY: Standard fittings of all brass construction which insures proper response to temperature changes. Standard dual threaded socket for 1/2" and 3/4" NPT. Meets all current military specifications (Army, Navy, Air Force).

NAVY CLASS THERMOWELLS

STRAIGHT FORM	CAT NO.	ANGLE FORM	CAT NO.	BRASS	304SS	316SS	STEM	INSERTION U
2" STEM	5SS2	2" STEM	5AS2	E13S-BS	E13S-SS	E13S-316SS	2"	1 5/16"
4" STEM	5SS4	4" STEM	5AS4	E13L-BS	E13L-SS	E13L-316SS	4"	3 5/16"

ADD RANGE CODE FROM RANGE TABLE LISTING. EX: 5AS2-240 (RANGE 30-240F)
ABOVE CATALOG NUMBERS **DO NOT INCLUDE SOCKETS** - ORDER SEPARATELY
FROM THERMOWELL TABLE LISTING.

THRIFT LINE THERMOMETERS



Same Features as Navy Class Thermometer except:

STEM & SOCKET ASSEMBLY: All brass stem. Removable socket secured to stem by set-screw. Socket standard in brass with 1/2" NPT.

STRAIGHT FORM	CAT NO. TL5S2
ANGLE FORM	CAT NO. TL5A2

ADD RANGE CODE FROM RANGE TABLE LISTING.
EX: TL5S2-240 (RANGE 30-240F). ABOVE CATALOG
NUMBERS **DO NOT INCLUDE SOCKETS** ORDER
SEPARATELY FROM THERMOWELL TABLE LISTING.

THRIFT LINE THERMOWELLS

CAT NO.	NPT	INSERTION U
SF12-BS	1/2"	1 3/8"
SF34-BS	3/4"	1 3/8"

°F RANGES	SCALE DIV.	RANGE CODE
40-0-110°F	2°	110
20-120°F	2°	120
20-180°F	2°	180
30-240°F	2°	240
30-300°F	5°	300
50-400°F	5°	400

SIX INCH HOT & CHILLED WATER THERMOMETERS

The Weiss 6" Hot & Chilled Water Thermometer is our most economical offering in industrial glass thermometers. The unit features components of non-corrosive materials and its compact design and excellent readability makes the HW & CW Series ideal for a variety of general purpose applications. Typical applications include small pipe lines, residential and commercial boilers, solar heating systems.

SCALE LENGTH: 5 1/2"

SCALE: White coated aluminum with permanently baked black markings.

TUBE: Magnifying blue liquid.

CASE: Molded V-shaped GE Valox® in gray textured finish.

RANGE: Hot Water 40-260°F (2° div.) and 5-125°C (1° div.)

Chilled Water -40-120°F (2° div.) and -40-50°C (1° div.)

CONNECTION: Brass 1/2" NPT.

HOT WATER

CHILLED WATER

STRAIGHT FORM	CAT NO. HW5S2	CAT NO. CW5S2
ANGLE FORM	CAT NO. HW5A2	CAT NO. CW5A2

COMPLETE WITH 1/2" NPT BRASS CONNECTION WITH 1-3/8" INSERTION.



HOT WATER BIMETAL DIAL THERMOMETERS

Weiss' most economical offering in the dial thermometers is ideal for a number of general heating applications including small pipelines. Units are furnished with 1/2" NPT brass removable socket or 3/4" sweat connection.

DESCRIPTION	DIAL SIZE	CAT. NO.	RANGE	FITTING
HOT WATER BIMETAL	2 1/2"	HWBM25	32-250 F&C	1/2" NPT
	4"	HWBM40	32-250 F&C	1/2" NPT
	2 1/2"	HWBM25S	32-250 F&C	3/4" SWEAT
	4"	HWBM40S	32-250 F&C	3/4" SWEAT



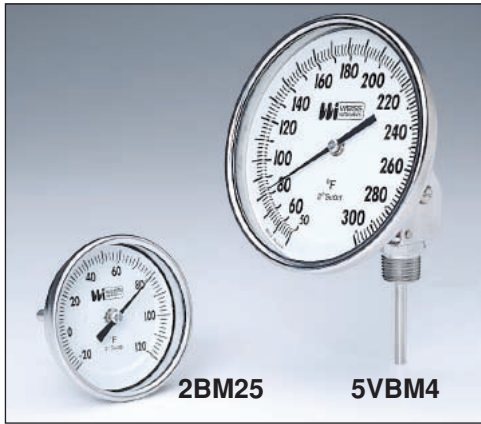
GENERAL PURPOSE THERMOMETERS

The instruments illustrated here are general purpose type. The group consists of bimetal dial, glass pocket clip and pocket digital thermometers.

DESCRIPTION	CAT. NO.	RANGE
DIAL THERMOMETERS		
POCKET DIAL	PT125	25-125F
POCKET DIAL	PT180	40-0-180F
POCKET DIAL	PT220	0-220F
1 3/4" DIAL	134-160	40-0-160F
1 3/4" DIAL	134-220	0-220F
GLASS THERMOMETERS		
POCKET GLASS	PLC120	30-0-120F
POCKET GLASS	PLC220	0-220F
DIGITAL THERMOMETERS		
POCKET DIGITAL/AUTO OFF	DP300	58-0-302F&C
POCKET DIGITAL/WATER PROOF	DP300A	58-0-302F&C



BIMETAL DIAL THERMOMETERS



Weiss offers a complete line of Commercial Bimetal Thermometers in 2", 3" and 5" dial sizes. All versions are hermetically sealed and silicone dampened for optimum performance in most industrial applications. A recalibration feature is standard on the Vari-angle types. Other 3" and 5" dial forms are available with or without a reset feature for a wider customer choice and savings.

CASE: The entire case assembly is of Type 304 Stainless Steel. To insure a moisture proof unit, the heavy glass face is securely gasketed with the case and bezel assembly, hermetically sealed.

STEM ASSEMBLY: The stem and fixed thread connection is fabricated of stainless steel. All welded construction insures complete corrosion resistance. Model BM, RBM and VBM stem diameter is 1/4" and for 2" dials the fixed thread is 1/4" NPT, 3" and 5" dials are 1/2" NPT.

MODEL 2BM - 2" Angle

CAT NO.	Stem Length*	NPT
2BM25	2 1/2"	1/4"
2BM4	4"	1/4"
2BM6	6"	1/4"
2BM9	9"	1/4"
2BM12	12"	1/4"

MODEL 3BM, 3" Angle - 3BMS, 3" Straight

CAT NO.	Stem Length*	NPT
3BM25 3BMS25	2 1/2"	1/2"
3BM4 3BMS4	4"	1/2"
3BM6 3BMS6	6"	1/2"
3BM9 3BMS9	9"	1/2"
3BM12 3BMS12	12"	1/2"

MODEL 5BM, 5" Angle - 5BMS, 5" Str.

CAT NO.	Stem Length*	NPT
5BM25 5BMS25	2 1/2"	1/2"
5BM4 5BMS4	4"	1/2"
5BM6 5BMS6	6"	1/2"
5BM9 5BMS9	9"	1/2"
5BM12 5BMS12	12"	1/2"

MODEL 3RBM, 3" Angle - 3RBMS, 3" Straight

CAT NO.	Stem Length*	NPT
3RBM25 3RBMS25	2 1/2"	1/2"
3RBM4 3RBMS4	4"	1/2"
3RBM6 3RBMS6	6"	1/2"
3RBM9 3RBMS9	9"	1/2"
3RBM12 3RBMS12	12"	1/2"

Series RBM with Recalibrator

MODEL 5RBM, 5" Angle - 5RBMS, 5" Str.

CAT NO.	Stem Length*	NPT
5RBM25 5RBMS25	2 1/2"	1/2"
5RBM4 5RBMS4	4"	1/2"
5RBM6 5RBMS6	6"	1/2"
5RBM9 5RBMS9	9"	1/2"
5RBM12 5RBMS12	12"	1/2"

MODEL 3VBM, 3" Vari-angle

CAT NO.	Stem Length*	NPT
3VBM25	2 1/2"	1/2"
3VBM4	4"	1/2"
3VBM6	6"	1/2"
3VBM9	9"	1/2"
3VBM12	12"	1/2"



MODEL 5VBM, 5" Vari-angle

CAT NO.	Stem Length*	NPT
5VBM25	2 1/2"	1/2"
5VBM4	4"	1/2"
5VBM6	6"	1/2"
5VBM9	9"	1/2"
5VBM12	12"	1/2"

*Includes thread. Longer stem lengths available.

NOTE: When ordering Silicone Filled Bimetals add Prefix **SF** to appropriate Catalog No. **Ex:** SF5RBM25

FAHRENHEIT	FIG. INTER.	SCALE DIV.	CELSIUS	FIG INTER.	SCALE DIV.	DUAL SCALE - F&C	
-80/0/120	20°	2°	-50/0/50	10°	1°	-80/0/120F	-60/0/50C
-20/0/120	20°	2°	**0/50	5°	1/2°	-20/0/120F	-30/0/50C
**30/130	10°	1°	0/100	10°	1°	**30/130F	0/55C
0/200	20°	2°	0/150	10°	1°	0/200F	-15/0/90C
0/250	20°	2°	0/200	20°	2°	0/250F	-20/0/120C
50/300	20°	2°	0/300	50°	2°	50/300F	10/150C
50/400	50°	5°	*0/450	50°	5°	50/400F	10/200C
50/550	50°	5°	**100/550	50°	5°	50/550F	10/260C
*100/800	100°	10°				*100/800F	40/425C
**200/1000	100°	10°				**200/1000F	100/540C

* Satisfactory for continuous service up to 800°F or 425°C. Can be used for intermittent service from 800-1000°F or 425-500°C.

* Minimum stem length for these ranges is 4". ** Minimum stem length is 4" Straight and Vari-angle Form.

SEPARABLE SOCKETS FOR 3" AND 5" ONLY				DUCT MOUNTING FLANGES	
	CAT. NO.	STEM LGTH.	INSERT LGTH.	CAT. NO.	INSERTION
3/4" NPT	B25	2 1/2"	1	BF3	STANDARD
	B35	4"	2 1/2"	BF3-2	EXTENSION NECK
	BR6	6"	4 1/2"		
	BR9	9"	7 1/2"		
	BR12	12"	10 1/2"		
	CAT. NO.	STEM LGTH.	INSERT LGTH.	LAG EXT.	
3/4" NPT	BSS35	4"	1 1/2"	13/4"	
	BN6	6"	2 1/2"	2"	
	BN9	9"	4 1/2"	3"	
	BN12	12"	7 1/2"	3"	

VAPOR ACTUATED DIAL THERMOMETERS

Offered in 3 1/2" and 4 1/2" dial sizes, these thermometers are furnished in four stainless steel case configurations for direct, surface or panel mounting. The following coding chart illustrates a wide variety of bulb styles, capillaries and process connection fittings. The versatility of configurations makes these thermometers well suited to a wide range of applications including hot and chilled water pipeline systems, tanks and air ducts.



45BL3-5211

CODE	CATALOG NO.	DESCRIPTION				
I	35	CASE SIZE 3 1/2" Case				
	45	4 1/2" Case				
II	V	CASE TYPE Vari-angle [®] Direct Mount				
	B	Back Flange, Surface Mount				
	R	Semi-flush, Panel Mount				
	Z	Adjustable Bracket, Remote Mount				
III	A	CASE CONNECTION Adjustable				
	B	Back Connection				
	L	Lower Connection				
IV	3	CASE WINDOW Snap in Lexan with "O" Ring				
V	THERMAL SYSTEM					
	0	Union	Copper (Vari-angle only)			
	2	Plain	Copper	Copper	Cu. Braid	
	3	Plain	316 S.S.	316 S.S.	None	
	5	Union	Copper	Copper	Cu. Braid	
	7	Union	316 S.S.	Copper	Cu. Braid	
	8	Union	316 S.S.	316 S.S.	Intlock Armor*	
	9	Union	316 S.S.	316 S.S.	None	
	* At bulb end 3 1/2" long. All systems have S.S. Spring capillary protection at indicating head. No. 5-7 system include S.S. spring at bulb end - S.S. jam nut standard on No. 8-9 system.					
	VI	BULB SELECTION				
		Thermal System No. 5 Thru 9 (Union)	Thermal System No. 2 & 3 (Plain)	Max. System Len.		
		Dia.	Length	Dia.	Length	
1		7/16	2.5"	N.A.	N.A.	10Ft.
2*		7/16	3.4"	3/8	3.4	25Ft.
3*		7/16	5.4"	3/8	4.9	50Ft.
4		7/16	7.4"	3/8	7.9	99Ft.
5	7/16	9.4"	3/8	9.4	99Ft.	
X	1/8" x 180" Averaging Bulb			10Ft.		
6	N.A.	N.A.	3/8	2.5	05Ft.	

* Only No. 2&3 bulbs are options for Vari-angle.

STANDARD RANGES*		
-40-0-60F	0-150F	30-300F
-20-0-100F	0-180F	100-350F
-40-0-110F	40-240F	60-260F

*All Ranges available in Dual Scale, F&C.

VII	PROCESS CONNECTION FITTING	
	1	Union Connection 1/2" NPT
	2	Union Connection 3/4" NPT
	3	Separable Socket 1/2" NPT
	4	Separable Socket 3/4" NPT
	5	Separable Socket 1/2" NPT with 2" Lag Extension (No.3 Bulb only)
6	Separable Socket 3/4" NPT with 2" Lag Extension (No.3 Bulb only)	
7	Air Duct Flange, Union Conn., Aluminum only	
9	Plain bulb, no fitting	
VIII	PROCESS CONNECTION MATERIAL	
	1	Brass
	2	304 Stainless Steel
	3	316 Stainless Steel
	5	Aluminum (Air Duct Flange only)
	0	None - Plain Bulb
IX A-B	See Example Below	SYSTEM LENGTH SPECIFYING
		9A - Use 2 digits: EX. 05, 10, 99 for length required. 9B - Use FT for feet, use IN for inches

EXAMPLE FOR OBTAINING COMPLETE CATALOG NUMBER FROM CODES - SERIES VTR

CODE I-IV (HEAD ASSY) CODE V-VIII (THERMAL SYSTEM) CODE IX A - B (CAPILLARY LENGTH)

4 5 B L 3 — **5 2 3 1** — **0 5 F T**

RANGE
40-240 F

EXAMPLE FOR OBTAINING COMPLETE CATALOG NUMBER FROM CODES - SERIES VTA

CODE I-IV (HEAD ASSY) CODE V-VIII (THERMAL SYSTEM)

4 5 V A 3 — **0 2 3 1**

RANGE
40-0-60 F&C

DIGITAL VARI-ANGLE THERMOMETER



SPECIFICATIONS

CASE	Hi-impact ABS	
RANGE	-50/300°F -45/150°C	
DISPLAY	3/8" LCD digits, wide ambient formula	
ACCURACY	1% of reading or 1° whichever is greater	
RESOLUTION	1/10° between -19.9/199.9°F (-28/93 °C)	
RECALIBRATION	Internal potentiometer	
LUX RATING	10 Lux (one foot-candle)	
UPDATE	10 seconds	
AMBIENT OPERATING	-30/140°F (-35/60 °C)	
AMBIENT TEMP ERROR	Zero	
HUMIDITY	100%	
SENSOR	Glass passivated thermistor	
STEM ASSEMBLIES	INDUSTRIAL GLASS	BIMETALLIC
	Full conformance with Fed Spec GG-T-321D. Fully interchangeable with Industrial Glass Thermometers.	Full conformance with ASME B40.3-1990. Fully interchangeable with Bimetallic Dial Thermometers.

The Weiss patented* Digital Vari-angle® Thermometer maintains the strict requirements for thermometers in hydronic applications in that they're self-powered and within 1% accuracy. This reliable series of digital thermometers offers the added feature of stem assemblies for direct replacement of mercury-in-glass types where environmental concerns exist. Whether on new installations or replacements, our Vari-angle Digital Thermometers include the same level of quality that the industry associates with the Vari-angle trademark and all Weiss Products.

*Patent No. 5,196,781 ©Vari-angle is a registered trademark of Weiss Instruments, Inc.

CAT. NO.	DESCRIPTION	IDN
DVU35	3 1/2" Industrial Stem	62100
DVU6	6" Industrial Stem	62110
E35-75BS*	3/4" NPT 3 1/2" Socket	20300
ER6-75BS*	3/4" NPT 6" Socket	20500
EN6-75BS*	3/4" NPT 6" Ext. Socket	20501
DVBM25	2 1/2" x 1/2" NPT Stem	62120
DVBM4	4" x 1/2" NPT Stem	62130
DVBM6	6" x 1/2" NPT Stem	62140
DVD6	6" Stem w/ Duct Mtg. Flange	62310
DVD9	9" Stem w/ Duct Mtg. Flange	62320

*For use with DVU thermometers on new installations.



Cat No.	Description	IDN
DVC-4	Outdoor Waterproof Cover (4 pcs per pack)	62410

TRADE LINE PRESSURE GAUGES

Weiss TL Gauges are intended for general service conditions, for pressure or vacuum on air, oil, water, gas or other mediums that do not attack brass. TL Gauges are furnished in drawn steel cases, finished in black. The 1 1/2" dials are supplied with 1/8" NPT and 2" dial versions are available with 1/4" or 1/8" NPT connections. All other dial sizes are 1/4" NPT. All gauges conform with ANSI B40.1 accuracy Grade B-2% mid scale.



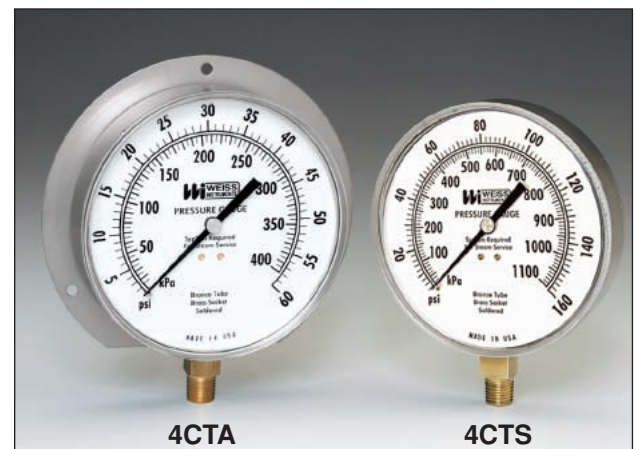
TO SPECIFY			
CHOOSE CAT. NO. – PLUS RANGE CODE – PLUS CONNECTION			
INDICATES	RANGE	RANGE	SIZE & LOCATION
DIAL SIZE	CODE		
TL15	1 1/2"	015	0-15 8L = 1/8" Lower
TL20	2"	030	0-30
TL28	2"	060	0-60 8B = 1/8" Ctr Back
TL25	2 1/2"	100	0-100
TL35	3 1/2"	160	0-160 4L = 1/4" Lower
TL45	4 1/2"	200	0-200 4B = 1/4" Ctr Back
		300	0-300
		400	0-400
		600	0-600
		VAC	0-30" HG
		V30	30-0-30
		V60	30-0-60
		V100	30-0-100
		V150	30-0-150

Ex: TL25 – 100 – 4L

PRESSURE		
RANGE	GRADUATIONS	FIG. INTERVAL
0-15	0.5	1
0-30	0.5	5
0-60	1	5
0-100	2	10
0-160	5	20
0-200	5	20
0-300	5	30
0-400	10	50
0-600	10	50
COMPOUND		
30-0-15	1" Hg.-0.5p	5" Hg.-3p
30-0-30	1" Hg.-1p	10" Hg.-5p
30-0-60	2" Hg.-1p	10" Hg.-10p
30-0-100	5" Hg.-2p	15" Hg.-10p
30-0-150	5" Hg.-2p	30" Hg.-20p
VACUUM		
30"-0	0-5" In. Hg.	5" In. Hg.

HVAC PRESSURE GAUGES

Weiss 4 1/2" CTS/CTA Pressure Gauges are designed to meet the standard specifications for Heating, Cooling and Air Conditioning applications. The CTS has a stainless steel case for stem mount and the CTA is an aluminum back flange case for either stem or surface mounting. Both versions conform with ANSI B40.1 accuracy Grade A-1% mid scale.

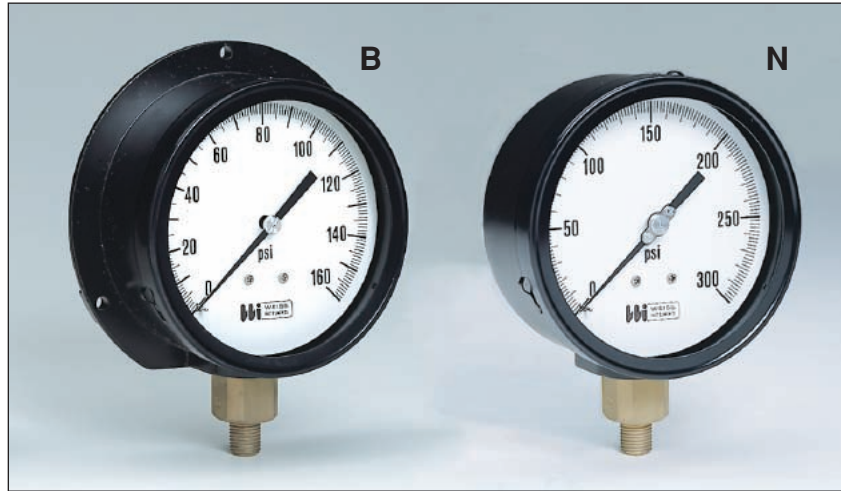


- POINTER:** Balanced adjustable aluminum.
- DIAL:** White coated metal, lithographed with black graduation lines and numerals.
- MOVEMENT:** Brass construction.
- BOURDON TUBE & SOCKET:** Phosphor bronze bourdon. Brass stock socket 9/16" square wrench surface and 1/4" NPT lower connection. Soft-soldered construction.

PRESSURE			COMPOUND		
RANGE	GRADUATIONS	FIG. INTERVAL	RANGE	GRADUATIONS	FIG. INTERVAL
0-15	0.2	1	30-0-15*	1" Hg.-0.5p	10" Hg.-5p
0-30	0.5	5	30-0-30	1" Hg.-0.5p	10" Hg.-10p
0-60	1	5	30-0-60	1" Hg.-1p	10" Hg.-10p
0-100	1	10	30-0-100	2" Hg.-1p	30" Hg.-20p
0-160	2	20	30-0-150*	2" Hg.-2p	30" Hg.-20p
0-200	2	20	30-0-300*	10" Hg.-5p	30" Hg.-50p
0-300	5	50			
0-400	5	50			
0-600	10	50			
			VACUUM		
			30"-0	0-5" In. Hg.	5" In. Hg.

*In the 4CTA-1 Gauge these ranges are not available.

INDUSTRIAL PRESSURE GAUGES



The Weiss Series 088 Gauges are ideal for use on boilers, compressors, pumps, and any industrial applications that require a heavy duty internal gauge. Our 4 1/2" case styles have a glass window, solid back with safety blow out disc standard. Available in two case styles—Style B: Aluminum Back Flange and Style N: Aluminum No Flange, all have 1/4" NPT lower mount connection. Optional 1/2" NPT available.

TO SPECIFY					
SIZE	CAT. NO.	CASE STYLE	NPT	MOUNT	RANGE
4 1/2"	4PG-1	B - Back Flange	1/4"	LM*	—
4 1/2"	4UG-1	N - No Flange	1/4"	LM	—
Ex: 4PGN-1 1/4" LM 0-160 psi			*LM - Lower Mount		

CAT. NO.	POINTER	RANGE LIMITS	BOURDON TUBE	MOVEMENT	SOCKET	ACCURACY
PG-1	SLOTTED ADJUSTABLE	VACUUM THRU 0-600 psi	"C" PHOSPHOR BRONZE SILVER BRAZED JOINTS	BRASS BUSHED ROTARY	BRASS	1% ANSI GRADE A
UG-1	MICROMETER ADJUSTABLE	VACUUM THRU 0-600 psi	"C" PHOSPHOR BRONZE SILVER BRAZED JOINTS	STN. STL. BUSHED ROTARY	BRASS	1/2 of 1% ANSI GRADE 2A

PRESSURE			COMPOUND		
RANGE	GRADUATIONS	FIG. INTERVAL	RANGE	GRADUATIONS	FIG. INTERVAL
0-15	0.1	1	30-0-15	0.5" Hg.-0.2p	5" Hg.-3p
0-30	0.2	5	30-0-30	1" Hg.-0.5p	10" Hg.-5p
0-60	0.5	5	30-0-60	1" Hg.-1p	10" Hg.-10p
0-100	1	10	30-0-100	2" Hg.-1p	10" Hg.-10p
0-160	1	20	30-0-150	5" Hg.-2p	10" Hg.-20p
0-200	2	20	30-0-300	5" Hg.-2p	30" Hg.-25p
0-300	2	50			
0-400	5	50			
0-600	5	50			
			VACUUM		
			30"-0	0.2" In. Hg.	5" In. Hg.

PROCESS PRESSURE GAUGES

The 4 1/2" Process Gauge is designed for those severe service applications where operator safety is a factor. This solid front gauge is equipped with a solid wall separating the indicating dial from the bourdon tube and a blow-out back which will release from the case if the bourdon tube should rupture.

Available with phosphor bronze/brass, 316 stainless steel or monel internals, liquid-filled or dry construction, this gauge is ideally suited for the requirements of the Process, Power and Chemical Industries. This high quality gauge offers the benefit of field filling without any additional kits or accessories.



NF4UGY1

NF4UGY1 NON-FILLED / LF4UGY1 LIQUID FILLED

- SOCKET:** Brass
- BOURDON TUBE:** Phosphor bronze - C tube to 600 psi. AISI 316 stainless steel coiled tube 1000 psi and above.
- CONNECTING JOINTS:** Silver brazed
- MOVEMENT:** Bushed stainless steel
- DIAL:** White aluminum, black & red markings (psi & kPa)
- POINTER:** Black aluminum, micrometer adjustable
- CASE:** Black reinforced thermoplastic fiberglass
- WINDOW:** Acrylic
- RING:** Reinforced polypropylene
- GASKETS:** Ethylene propylene
- ACCURACY:** 0.5% ASME B40.1 Grade 2A
- CONNECTIONS:** 1/4" or 1/2" NPT lower or lower back
- CAT. NO. LF4UGY1:** Lower connection only.

NF4UGY2 NON-FILLED / LF4UGY2 LIQUID FILLED

- SOCKET:** AISI 316 stainless steel
- BOURDON TUBE:** AISI 316 S.S. - C tube to 600 psi. Coiled tube 1000 psi and above.
- CONNECTING JOINTS:** Welded
- MOVEMENT:** Bushed stainless steel
- DIAL:** White aluminum, black & red markings (psi & kPa)
- POINTER:** Black aluminum, micrometer adjustable
- CASE:** Black reinforced thermoplastic fiberglass
- WINDOW:** Acrylic
- RING:** Reinforced polypropylene
- GASKETS:** Ethylene propylene
- ACCURACY:** 0.5% ASME B40.1 Grade 2A
- CONNECTIONS:** 1/4" or 1/2" NPT lower or lower back
- CAT. NO. LF4UGY2:** Lower connection only.

PRESSURE			COMPOUND		
RANGE	GRADUATIONS	FIG. INTERVAL	RANGE	GRADUATIONS	FIG. INTERVAL
0-15	0.1	1	30-0-15	0.5" Hg.-0.2p	5" Hg.-3p
0-30	0.2	5	30-0-30	1" Hg.-0.5p	10" Hg.-5p
0-60	0.5	5	30-0-60	1" Hg.-1p	10" Hg.-10p
0-100	1	10	30-0-100	2" Hg.-1p	10" Hg.-10p
0-160	1	20	30-0-150	5" Hg.-2p	10" Hg.-20p
0-200	2	20	30-0-300	5" Hg.-2p	30" Hg.-25p
0-300	2	50			
0-400	5	50			
0-600	5	50			
0-800	10	100			
0-1000	10	100			
0-1500	10	200			
0-2000	20	200			
0-3000	20	500			
0-5000	50	500			
0-10000	100	1000			
0-20000	200	2000			
			VACUUM		
			bar -1-0	0.01	0.1
			kPa -100-0	1	10
			30"-0	0.2" In. Hg.	5" In. Hg.

STAINLESS STEEL INDUSTRIAL GAUGES



LF251



LF402

Where vibration, corrosion and pulsating conditions exist, the Weiss line of stainless steel cased liquid filled and dry construction industrial pressure gauges are designed to meet the most severe applications. This series of instruments includes a wide range of accuracies, case patterns and construction materials to cover most requirements.

CHOOSE CAT. NO.		PLUS RANGE CODE		PLUS CONNECTION		
INDICATES CONSTRUCTION			RANGE CODE		SIZE & LOCATION	
CAT. NO.	DIAL SIZE	INTERNALS	RANGE CODE	RANGE - psi	kPa	
LIQUID FILL						
LF201	2"	Bronze	015	0-15	0-100	8L* = 1/8" Lower
LF251	2 1/2"	Bronze	030	0-30	0-200	8B* = 1/8" Back
LF252	2 1/2"	316S.S.	060	0-60	0-400	4L = 1/4" Lower
LF441*	4"	Bronze	100	0-100	0-700	4B = 1/4" Back
LF401	4"	Bronze	160	0-160	0-1100	2L = 1/2" Lower
LF402	4"	316S.S.	200	0-200	0-1400	2B = 1/2" Back
LF602	6"	316S.S.	300	0-300	0-2100	
DRY			400	0-400	0-2800	
NF252	2 1/2"	316S.S.	600	0-600	0-4200	
NF401	4"	Bronze	1000	0-1000	0-7000	
NF402	4"	316S.S.	1500	0-1500	0-10,000	<i>*LF201 only</i>
NF601	6"	Bronze	2000	0-2000	0-14,000	
NF602	6"	316S.S.	3000	0-3000	0-21,000	
<i>*Thin Line Case</i>			5000	0-5000	0-40,000	
			6000	0-6000	0-42,000	
			10000	0-10,000	0-70,000	
			15000	0-15,000	0-100,000	
			20000	0-20,000	0-140,000	
			VAC	0-30"HG	-100-0	
			V30	30"-0-30	-100-200	
			V60	30"-0-60	-100-400	
			V100	30"-0-100	-100-700	
			V150	30"-0-150	-100-1000	
			V200	30"-0-200	-100-1400	
			V300	30"-0-300	-100-2100	

Ex: LF251 – 100 – 4L

LOW PRESSURE DIAPHRAGM GAUGES

Designed for pressures below 15 psi, the Weiss Diaphragm Gauge offers an instrument highly sensitive yet durably constructed. Furnished in black drawn steel cases. Available in 2 1/2" dial size and 1/4" NPT lower or center back connected.

CASE: Black drawn steel, with twist lock polycarbonate window. **DIAPHRAGM:** Copper alloy.

SOCKET: Brass, 1/4" NPT lower or center back connection. **MOVEMENT:** Brass.

DIAL: White coated metal lithographed with black graduations lines and numerals.

POINTER: Balanced design, aluminum in black finish.



SERIES & TYPE	+ RANGE CODE			+ CONNECTION
	TYPE	CODE	RANGE	
DG25C Combination Pressure Dial	C	100	100"WP&60 oz/in	4L (1/4" NPT Lower)
DG25P Pressure Dial	C	145	35"WP&20 oz/in	4B (1/4" NPT Back)
DG25V Vacuum Dial	C	015	15"WP&9 oz/in	
	P	003	0-3 PSI	
	P	005	0-5 PSI	
	P	010	0-10 PSI	
	P	015	0-15 PSI	
	P	030	0-30" WP	
	P	060	0-60" WP	
	P	100	0-100" WP	
	V	030	30-0" WV	
	V	060	60-0" WV	
	V	100	100-0" WV	

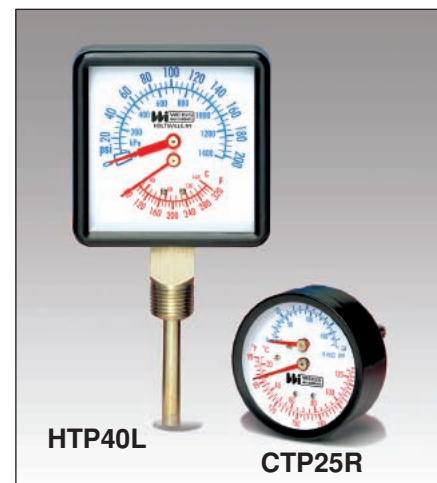
Ex: DG25P-005-4L Pressure Dial 0-5 PSI, 1/4" NPT Lower Connection

PRESSURE			COMBINATION		INNER SCALE		OUTER SCALE	
RANGE	GRADUATIONS	FIG. INTERVAL	IN. WATER OUTER SCALE	OZ. WATER INNER SCALE	GRADS	FIGURE INTERVAL	GRADS	FIGURE INTERVAL
0-3psi	0.05	0.5	0-35	0-20	0.5	5.0	0.5	5.0
0-5psi	0.1	1.0	0-15	0-9	0.2	1.0	0.2	3.0
0-10psi	0.1	1.0	0-60	0-35	1.0	5.0	1.0	10.0
inch/water								
0-15	0.2	3.0						
0-30	0.5	5.0						
0-60	1.0	10.0						
0-100	1.0	10.0						
oz.-sq. in.			VACUUM - in water vac.					
0-10	0.1	1.0	RANGE	GRADUATIONS	FIG. INTERVAL			
0-15	0.2	3.0	30-0	0.5	5.0			
0-30	1.0	5.0	60-0	1.0	10.0			
0-100	1.0	10.0	100-0	1.0	10.0			

TRI-O-METERS

The Weiss Tri-o-meter is designed for use on all types of hot water heating systems. One instrument reads the water pressure, water temperature and system head in feet of H₂O. Available in 2 1/2" dial with 1/4" NPT rear connection and 3 1/2" dial with 1/2" NPT lower or rear connected.

Series C	0-75 psi & Ft. of H ₂ O	60-260 F&C
H	0-200 psi & kPa	80-320 F&C
CAT. NO.	DESCRIPTION	
CTP25R	1/4" NPT Rear	
CTP25RX	1/4" NPT rear x 2" Extension	
CTP40RSX	1/2" NPT Rear	
CTP40L	1/2" NPT Lower	
HTP40RSX	1/2" NPT rear	
HTP40L	1/2" NPT lower	



GAUGE ACCESSORIES

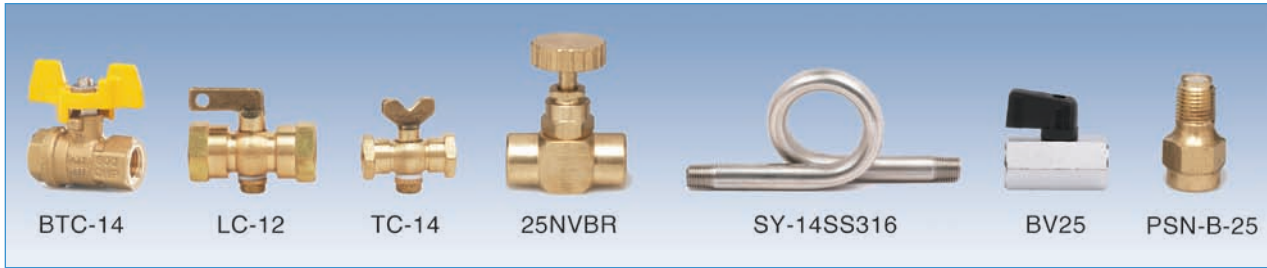


TABLE 1 - PRESSURE SNUBBERS

STYLE CODE	HOUSING MATERIAL CODE	HOUSING MATERIAL	NPT CODE	NPT	PSI RATING AT 70°F
PSN	B	Brass	25	1/4"	1,500 psi
	S	303 S.S.	50	1/2"	1,500 psi

TABLE 2

POROSITY SYMBOL CODE	TYPE OF SERVICE	PORE OPENING MEAN	PORE OPENING MAX.
E	Water and Light Oil (30 to 225 SSU*)	.0013	.0025
D	Oil (225 to 500 SSU)	.0025	.005
G	Air and other Gases	.0004	.0009

*SSU - Saybolt Seconds Universal Viscosity

For complete Catalog No. use Coding from Table 1 & 2. **EX: PSN-B-25-E** = Brass Housing 1/4" NPT, E Porosity Disc.

NEEDLE VALVES

CAT. NO.	SIZE	MATERIAL	RATING
25NVBR	1/4" NPTF X 1/4" NPTF	Brass	600 psi & 300°F
25NVSS	1/4" NPTF X 1/4" NPTF	304S.S.	4000 psi & 150°F
50NVBR	1/2" NPTF X 1/2" NPTF	Brass	600 psi & 300°F
50NVSS	1/2" NPTF X 1/2" NPTF	304S.S.	4000 psi & 150°F

SYPHONS

CAT. NO.	SIZE	MATERIAL	RATING
SY-14S	1/4" NPTM x 1/4" NPTM	Iron	300 psi & 300°F
SY-14B	1/4" NPTM x 1/4" NPTM	Brass	400 psi & 300°F

NOTE: Angle Syphon available 1/4" NPTM x 1/4" NPTM Brass - **Model ASY-14B** Iron - **Model ASY-14S**
All Syphons Schedule 40. Schedule 80 available on request.

GAUGE COCKS

CAT. NO.	SIZE	MATERIAL	RATING
TC-14	1/4" NPTF x 1/4" NPTF	Brass	200 psi Hydraulic
MTC-14	1/4" NPTF x 1/4" NPTM	Brass	200 psi Hydraulic
LC-14	1/4" NPTF x 1/4" NPTF	Brass	200 psi Hydraulic
TC-12	1/2" NPTF x 1/2" NPTF	Brass	200 psi Hydraulic
BTC-14 (Forged Brass)	1/4" NPTF x 1/4" NPTM	Brass	200 psi Hydraulic

BALL VALVES

CAT. NO.	SIZE	MATERIAL	RATING
BV25	1/4" NPTF x 1/4" NPTF	Chrome Plated Brass	450 psi & 250°F
MBV25	1/4" NPTF x 1/4" NPTM	Chrome Plated Brass	450 psi & 250°F
BV50	1/2" NPTF x 1/2" NPTF	Chrome Plated Brass	450 psi & 250°F

TEMP/PRESSURE TEST PLUGS

Weiss Temperature/Pressure Plugs allows for quick, efficient and accurate testing of hydronic pipe lines throughout HVAC systems. Offered in both nordel (blue cap) for hot and chilled water and neoprene (red cap) for natural gas.

Weiss plugs are consistently rated at 1000 psi. The self-sealing core insures long life and continuous service.



BP25-NP

CAT. NO.	DESCRIPTION	BODY & CAP	IDN
BP25-NR	1/4" NPT Nordel	Brass	90101
BP25-NP	1/4" NPT Neoprene	Brass	90102
BP50-NR	1/2" NPT Nordel	Brass	90103
BP50-NP	1/2" NPT Neoprene	Brass	90104
BP25L-NR	1/4" NPT Nordel w/ 1 3/4" Lag	Brass	90105
BP25L-NP	1/4" NPT Neoprene w/ 1 3/4" Lag	Brass	90106

CAT. NO.	ACCESSORIES	IDN
TPK	Test Kit	90120
GA18	Gauge Adapter	90125
PT220	1" Dial Pocket Test 0/220°F	90130
PT125	1" Dial Pocket Test 0/125°F	90110
TL25-030-4L	2 1/2" Gauge 0-30 psi	90131
TL25-160-4L	2 1/2" Gauge 0-160 psi	90134



BP50-NR

BP25L-NR

Send for Weiss Literature to match your specific application.



IND-3/08

BM-3/08

LT-6/06

V-5/05

GD-6/05

DT-2/05



SG-9/08

SSG-3/08

CTP-2/06

ARW-5/07

PHC-8/09

WEISS INSTRUMENTS, INC.
905 WAVERLY AVE., HOLTSVILLE, NEW YORK 11742
TEL: 631-207-1200 • FAX: 631.207.0900
www.weissinstruments.com

Distributed by:



Old World Craftsmanship . . . NEW WORLD TECHNOLOGY
Since 1882