

Domestic™ Series CS Condensate Units

**Single or Duplex
1,000 thru 150,000 Sq. Ft. EDR-250 thru 37,500 lb./hr.**

Steel Receivers:

Durable, Lightweight in sizes to 250 gallon (946L)

Centrifugal Pumps:

Provide generous running clearances.

Standard 3500 RPM for best hydraulic efficiencies, optional 1750 RPM.

Float Switches:

Double pole heavy duty, externally adjustable

Maximum Condensate Temperature: 200°F (93°C)

209°F (98°C) available at certain points

Optional Equipment Includes:

- Factory Mounted or Wall Mounted Control Panels
- Water Level Gauge
- Dial Thermometer
- Inlet Basket Strainers
- Butterfly Suction Valves (Available on pump capacities to 115 gpm, [435L/M])
- 3 Types of Alternation for Duplex Units
- Discharge Pressure Gauges



Domestic Pump



ITT Industries
Engineered for life

SYSTEM CAPACITY	PUMP CAPACITY GPM (L/M)	PUMP DISCHARGE PRESSURE PSIG (kPa)	MOTOR HORSEPOWER		PUMP DISCHARGE SIZE IN. (mm)	SERIES CS CONDENSATE UNITS								
			3500 RPM	1750 RPM		MODEL NUMBER	RECEIVER CAPACITY GAL. (L)	INLET SIZE IN. (mm)						
1,000 thru 6,000 Sq. Ft. EDR 250 thru 1,500 lb./hr. (113-680 kg/hr)	6 (23)	10-15*(69-103) 20* (138) 25* (172) 30* (207) 40 (276) 50 (345)	1/3 1/3 1/2 1/2 1 1 1/2	NA NA NA NA NA NA	3/4 (19)	61.5CS 62CS*** 62.5CS 63CS 64CS 65CS	6 (23) Simplex Only	2 (51)						
1,000 thru 9,000 Sq. Ft. EDR 250 thru 2,250 lb./hr. (113-1,021 kg/hr)	9 (34)	10-15*(69-103) 20* (138) 25* (172) 30* (207) 40 (276) 50 (345)	1/3 1/3 1/2 3/4 1 1 1/2	NA NA NA NA NA NA	3/4 (19)	91.5CS 92CS*** 92.5CS 93CS 94CS 95CS	9 (34) Simplex Only	2 (51)						
12,000 Sq. Ft. EDR 3,000 lb./hr. (1,361 kg/hr)	12 (45)	10-15*(69-103) 20* (138)	1/3 1/3	↓	3/4 (19)	121.5CS 122CS***	14 (53)	2 (51)						
		10-15*(69-103) 20* (138) 25* (172) 30* (207) 40 (276) 50 (345)	↑ 1/3 1/2 3/4 1 1 1/2	1/3 3/4 3/4 1 1/2 ** **		121.5CS 122CS 122.5CS 123CS 124CS 125CS	14 (53) Simplex 23 (87) Duplex							
		60 (414) 75 (518) 90 (621)	2 3 5	** ** **		126CS 127.5CS 129CS	23 (87)							
15,000 Sq. Ft. EDR 3,750 lb./hr. (1,701 kg/hr)	15 (57)	10-15 (69-103) 20 (138)	1/3 1/3	↓	3/4 (19)	151.5CS 152CS***	14 (53)	2 (51)						
		10-15*(69-103) 20* (138) 25* (172) 30* (207) 40 (276) 50 (345)	↑ 1/3 1/2 3/4 1 1 1/2	1/2 3/4 1 1 1/2 ** **		151.5CS 152CS 152.5CS 153CS 154CS 155CS	14 (53) Simplex 23 (87) Duplex							
		60 (414) 75 (518) 90 (621)	2 3 5	** ** **		156CS 157.5CS 159CS	23 (87)							
22,000 Sq. Ft. EDR 5,500 lb./hr. (2,495 kg/hr)	22 (83)	10-15*(69-103) 20* (138)	1/3 1/2	1/2 3/4	1 1/2 (38)	221.5CS 222CS 222.5CS	23 (87)	2 (51)						
		25* (172) 30* (207) 40 (276) 50 (345) 60 (414) 75 (518) 90 (621)	3/4 3/4 1 1/2 2 3 3 5	1 1 1/2 ** ** ** ** **		223CS 224CS 225CS 226CS 227.5CS 229CS								
		10-15 (69-103) 20 (138)	1/2 3/4	3/4 1		1 1/2 (38)			301.5CS 302CS 302.5CS	36 (136)	3 (76)			
		25 (172) 30 (207) 40 (276) 50 (345) 60 (414) 75 (518) 90 (621)	3/4 1 1 1/2 2 3 5 5	1 1 1/2 ** ** ** ** **					303CS 304CS 305CS 306CS 307.5CS 309CS					
		10-15 (69-103) 20 (138)	1/2 3/4	3/4 1					1 1/2 (38)			371.5CS 372CS 372.5CS	36 (136)	3 (76)
		25 (172) 30 (207) 40 (276) 50 (345) 60 (414) 75 (518) 90 (621)	1 1 1/2 2 3 3 5 5	1 1/2 1 1/2 ** ** ** ** **								373CS 374CS 375CS 376CS 377.5CS 379CS		
		10-15 (69-103) 20 (138)	1/2 3/4	3/4 1								1 1/2 (38)		
25 (172) 30 (207) 40 (276) 50 (345) 60 (414) 75 (518) 90 (621)	1 1 1/2 2 3 3 5 5	1 1 1/2 2 ** ** ** **	453CS 454CS 455CS 456CS 457.5CS 459CS											

*** Stock unit available, consult your Representative.

*Maximum Condensate Temperature: 209°F (98°C) 3500 RPM only.

**3500 RPM is standard 1750 RPM not available.

NA – Not Available due to space limitations.

SYSTEM CAPACITY	PUMP CAPACITY GPM (L/M)	PUMP DISCHARGE PRESSURE PSIG (kPa)	MOTOR HORSEPOWER		PUMP DISCHARGE SIZE IN. (mm)	SERIES CS CONDENSATE UNITS		
			*3500 RPM	1750 RPM		MODEL NUMBER	RECEIVER CAPACITY GAL. (L)	INLET SIZE IN. (mm)
60,000 Sq. Ft. EDR 15,000 lb./hr. (6,804 kg/hr)	60 (227)	15 (103) 20 (138) 25 (172) 30 (207) 40 (276) 50 (345) 60 (414) 75 (518) 90 (621)	1 1 1/2 1 1/2 2 3 3 5 5 7 1/2	1 1 1/2 1 1/2 2 ** ** ** ** **	2 (51)	601.5CS 602CS 602.5CS 603CS 604CS 605CS 606CS 607.5CS 609CS	52 (197)	3 (76)
75,000 Sq. Ft. EDR 18,750 lb./hr. (8,505 kg/hr)	75 (284)	15 (103) 20 (138) 25 (172) 30 (207) 40 (276) 50 (345) 60 (414) 75 (518) 90 (621)	1 1/2 1 1/2 2 2 5 5 5 7 1/2 7 1/2	1 1/2 2 3 ** ** ** ** ** **	2 (51)	751.5CS 752CS 752.5CS 753CS 754CS 755CS 756CS 757.5CS 759CS	75 (284)	4 (102)
90,000 Sq. Ft. EDR 22,500 lb./hr. (11,000 kg/hr)	90 (341)	15 (103) 20 (138) 25 (172) 30 (207) 40 (276) 50 (345) 60 (414) 75 (518)	1 1/2 2 2 3 3 5 5 7 1/2 7 1/2	1 1/2 2 2 3 3 ** ** ** **	2 (51)	901.5CS 902CS 902.5CS 903CS 904CS 905CS 906CS 907.5CS	75 (284)	4 (102)
112,000 Sq. Ft. EDR 28,000 lb./hr. (12,701 kg/hr)	112 (424)	15 (103) 20 (138) 25 (172) 30 (207) 40 (276) 50 (345) 60 (414) 75 (518)	2 2 3 3 5 5 7 1/2 7 1/2	2 2 3 3 ** ** ** **	2 (51)	1121.5CS 1122CS 1122.5CS 1123CS 1124CS 1125CS 1126CS 1127.5CS	120 (454)	4 (102)
150,000 Sq. Ft. EDR 37,500 lb./hr. (17,010 kg/hr)	150 (568)	15 (103) 20 (138) 25 (172) 30 (207) 40 (276) 50 (345) 60 (414) 75 (518)	3 3 5 5 7 1/2 7 1/2 10 10	2 3 5 5 ** ** ** **	2 (51) for 3500 rpm units 3 (76) for 1750 rpm units	1501.5CS 1502CS 1502.5CS 1503CS 1504CS 1505CS 1506CS 1507.5CS	120 (454)	4 (102)

**3500 RPM is standard 1750 RPM not available.

Standard Unit Features:

- Steel Receiver with provision for second pump (except 6 [23L] and 9 [34L] gallon receivers). Receiver sized for 1 minute net storage.
- Centrifugal Pump(s) with drip-proof motors. Pump capacity sized 2 times system return rate.
- Float switch(es).
- Lifting Eyes (23 gallon [87L] receivers and larger).

Optional Features Available As Specified:

- Water level gauge w/shut off valve (23 gallon [87L] receivers and larger)
- Dial Thermometer (23 gallon [87L] receivers and larger)
- Inlet Basket Strainer
- Discharge Pressure Gauges
- Mechanical Alternator provides sequencing of duplex pumps and standby of second pump on high level.
- Control Panels, see page 4
- Butterfly Suction Valve (Available on pump capacities to 115 gpm [568L/M])

Ordering Instructions:

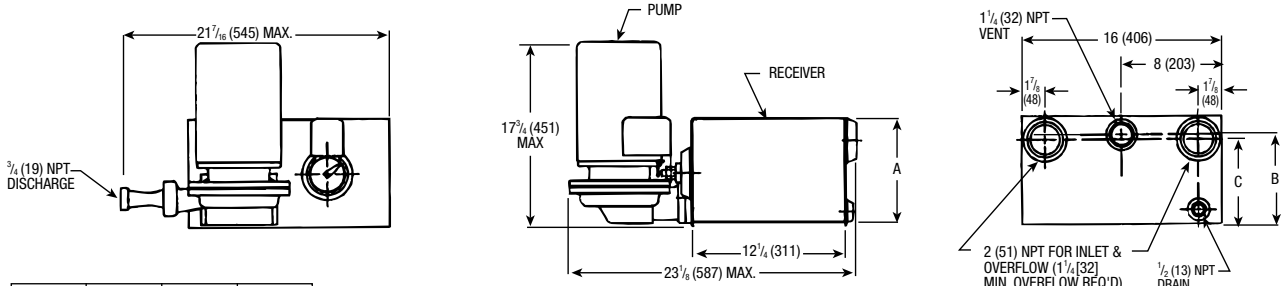
Specify model no., RPM, single or duplex, phase, operating voltage, special features.

Note: TEFC and explosion proof motors available. The motor horsepower requirement is often greater using explosion proof motors as they have unity service factor. No horsepower increase is necessary using TEFC motors.

ROUGHING-IN DIMENSIONS All dimensions in inches (mm)

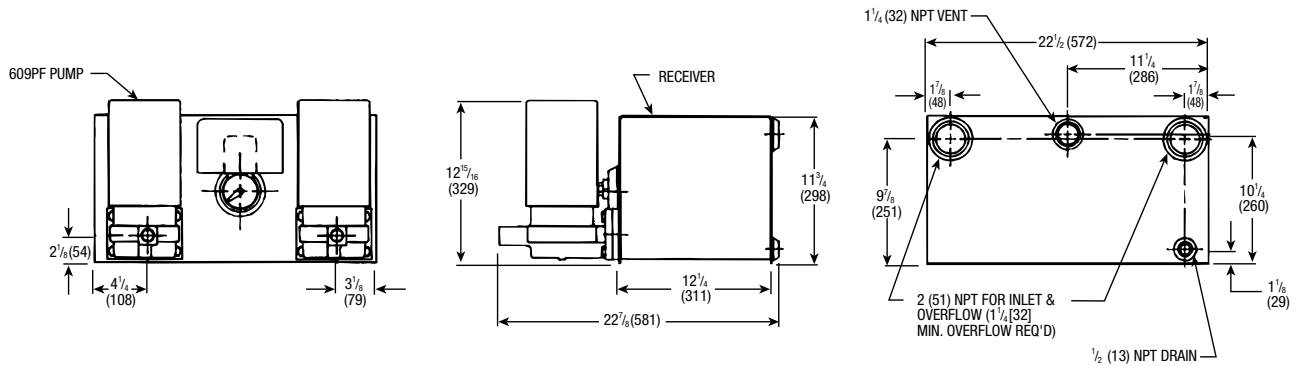
Not to be used for installation – CERTIFIED DIMENSIONS ON REQUEST. Actual Dimensions shown will vary based upon pump selected.

2DCS15 6 & 9 GALLON (23 & 34L) RECEIVER

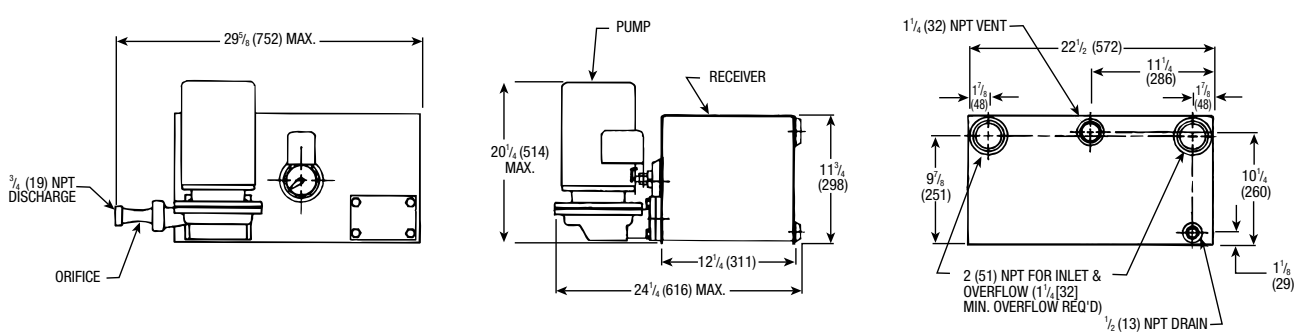


GAL. (L)	A	B	C
6 (236)	8 ⁷ / ₁₆ (217)	7 ¹ / ₁₆ (179)	6 ¹¹ / ₁₆ (170)
9 (342)	10 ⁷ / ₈ (276)	9 ⁷ / ₈ (238)	9 (229)

2DCS17 14 GALLON (53L) RECEIVER WITH 609PF PUMP



2DCS16 14 GALLON (53L) RECEIVER WITH ALL OTHER PF PUMPS (EXCEPT 609PF)

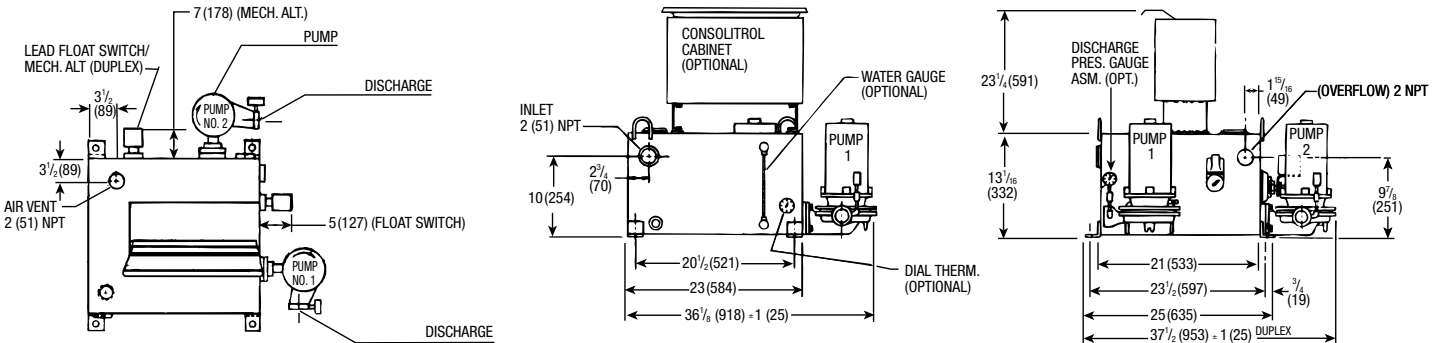


ROUGHING-IN DIMENSIONS

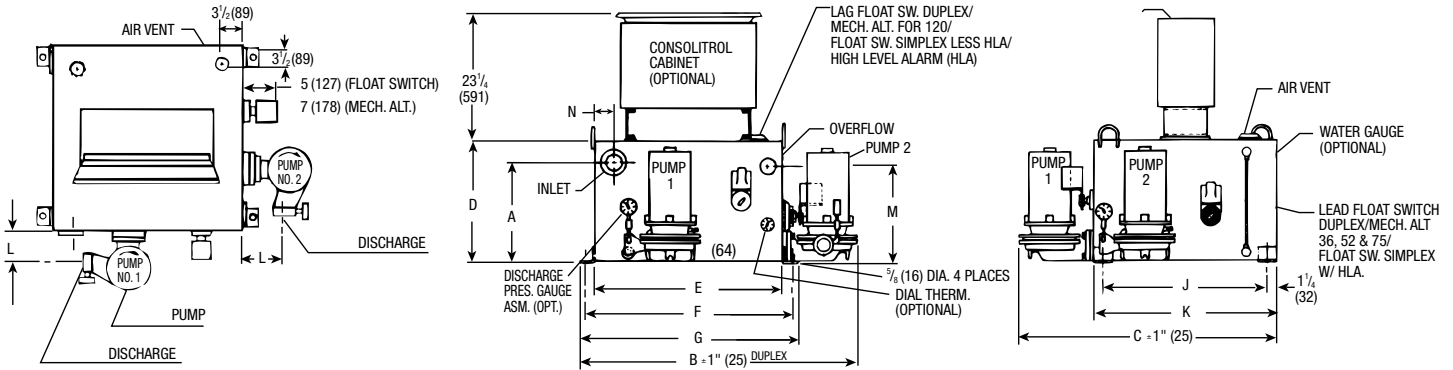
All dimensions in inches (mm)

Not to be used for installation – CERTIFIED DIMENSIONS ON REQUEST. Actual Dimensions shown will vary based upon pump selected.

2DCS02 23 GALLON (87L) RECEIVER WITH ALL OTHER PF PUMPS (609PF PUMP CONSULT FACTORY)

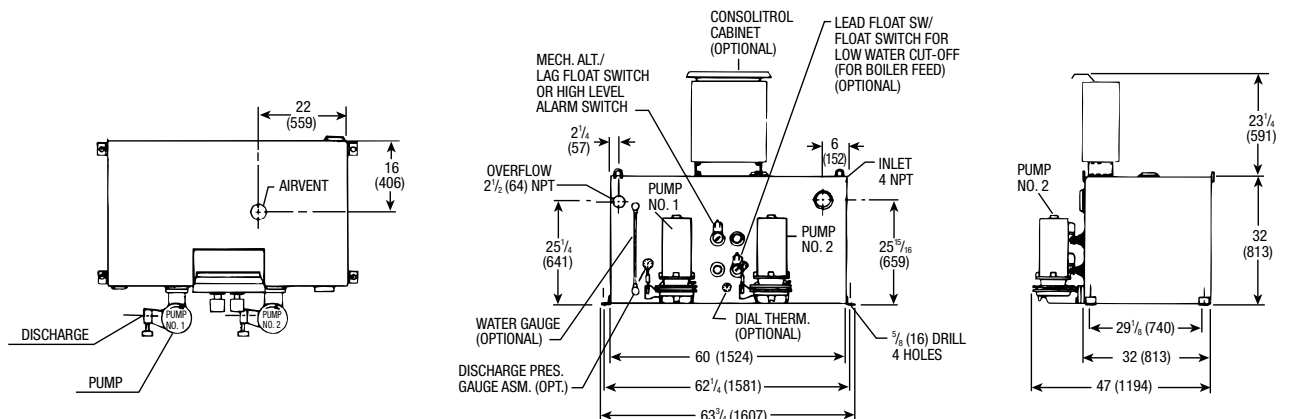


2DCS03 36-120 GALLON (136-454L) RECEIVER



Rec. Cap. GAL (L)	Inlet	A	B	C	D	E	F	G	J	K	L max	M	N	Airvent	Over- flow
36 (136)	3 (76)	13 1/8 (333)	41 (1041)	37 (940)	16 1/8 (408)	24 1/4 (629)	27 1/4 (692)	28 3/4 (730)	21 1/4 (540)	24 (610)	5 (127)	12 5/8 (321)	2 1/2 (64)	2 (51)	2 (51)
52 (197)	3 (76)	14 1/8 (359)	44 (1118)	41 (1041)	16 1/8 (408)	27 1/4 (705)	30 1/4 (768)	31 1/4 (806)	25 1/4 (641)	27 1/4 (705)	5 (127)	13 3/8 (346)	2 1/8 (73)	2 (51)	2 (51)
75 (284)	4 (102)	16 1/8 (410)	48 (1219)	44 (1118)	19 9/16 (503)	31 1/4 (794)	33 3/4 (857)	35 1/4 (895)	28 1/4 (730)	31 1/4 (794)	5 (127)	15 5/8 (391)	3 1/2 (89)	2 1/2 (64)	2 1/2 (64)
120 (454)	4 (102)	20 1/8 (511)	56 (1422)	46 (1168)	24 1/4 (616)	33 3/4 (857)	42 1/4 (1073)	43 3/4 (1111)	30 1/4 (768)	32 3/4 (832)	5 (127)	19 3/8 (492)	4 (102)	2 1/2 (64)	2 1/2 (64)

2DCS04 250 GALLON (946L) RECEIVER





Optional Electric Controls

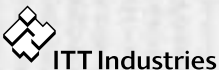
Consolitol Control Cabinets are available to comply with NEMA and JIC specifications. Panels may be factory mounted and wired or furnished separately for wall mounting.

Description of Optional Panel Components:

- Magnetic Starters must be used on all 3 phase motors and single phase motors 3 HP and larger.
- Disconnect Switches and Circuit Breakers. Either fuses or a circuit breaker is required ahead of the starters to protect against short circuits. A disconnect switch or circuit breaker also provides a means of shutting off power for service.
- Selector Switches. "Auto-Off-Hand" selector switches provide a means of shutting off pumps and a means of testing in the "Hand" position. "Off-Hand-Lead-Lag" selector switches may be furnished on duplex units with 2 float switches to provide manual alternation. Selector Switches may be furnished only when magnetic starters are provided.
- Electric Alternator may be furnished on duplex units to provide automatic sequencing of lead up. Electrical Alternator may be furnished only when magnetic starters and 2 float switches are provided.
- Transformers are required to reduce control voltage when power supply exceeds 230 volts. Transformers are recommended when voltage exceeds 120 volts. Refer to local codes for requirements.
- Pilot Lights. Pump running pilot lights are available to indicate pump operation.
- An Audible Alarm to indicate high water level may be furnished on simplex units or in conjunction with a mechanical alternator on duplex units. A separate float switch must be furnished to actuate alarm.
- Control power switching relay should be supplied in Duplex or Triplex units when individual pump disconnect switches are specified and a control power transformer is required. This relay is recommended in order to maintain control power in the event pump #1 disconnect switch is turned off or pump #1 fails. In this event the control power will be automatically supplied by pump #2.

Specified Panel Components to be furnished with unit at extra cost.

NEMA 2 – U.L. Listed panels are the standard option when specified.



**ISO 9001
Certified**

Domestic Pump

USA
Bell & Gossett
8200 N. Austin Avenue
Morton Grove, IL 60053
Phone: (847) 966-3700
Facsimile: (847) 966-9052
<http://www.fhs.ittind.com>