

Series CC[™] Condensate Units

Simplex or Duplex 1,000 thru 15,000 sq. ft. EDR 250 thru 37,500 lb./hr.

Cast Iron Receivers: for years of dependable service; warranted for 20 years from date of shipment against failure due to corrosion.

Centrifugal Pumps: provide generous running clearances. Standard 3500 RPM for best hydraulic efficiencies, optional 1750.

Float Switches: Double pole heavy duty, externally adjustable.

Maximum Condensate Temperature: 200°F (93°C)

209°F (98°C) available at certain points

OPTIONAL EQUIPMENT INCLUDES:

- Factory Mounted Control Panels
- Water Level Gauge
- Dial Thermometer
- Inlet Basket Strainers
- Suction Butterfly Valves (Available on pump with capacities to 115gpm [435^L/M])
- 3 Types of Alternation
- Discharge Pressure Gauges
- High Level Alarm

SYSTEM CAPACITY†	PUMP CAPACITY GPM (L/M)	DISCHARGE PRESSURE PSIG (kPa)	MOTOR HORSEPOWER		DISCHARGE SIZE IN. (mm)	SERIES CC™ CONDENSATE UNITS		
			3500 RPM	1750 RPM		MODEL NUMBER	RECEIVER CAPACITY GAL. (L)	INLET SIZE IN. (mm)
1,000 thru 6,000 Sq. Ft. EDR 250 thru 1,500 lb./hr. (113-680 kg/hr)	6 (23)	15* (103)	1/3	1/3	3/4 (19)	61.5CC	6 (23) Simplex	2 (51)
		20* (138)	1/3	1/2		62CC		
		25* (172)	1/2	3/4		62.5CC		
		30* (207)	1/2	1 1/2		63CC		
		40 (276)	1	**		64CC	14†† (53) Duplex	
		50 (345)	1 1/2	**		65CC		
		60 (414)	2	**		66CC		
		75 (518)	3	**		67.5CC		
90 (621)	3	**	69CC	23 (87)				
1,000 thru 9,000 Sq. Ft. EDR 250 thru 2,250 lb./hr. (113-1,021 kg/hr)	9 (34)	15* (103)	1/3	1/3	3/4 (19)	91.5CC	9 (34) Simplex	2 (51)
		20* (138)	1/3	1/2		92CC		
		25* (172)	1/2	3/4		92.5CC		
		30* (207)	3/4	1 1/2		93CC		
		40 (276)	1	**		94CC	14†† (53) Duplex	
		50 (345)	1 1/2	**		95CC		
		60 (414)	2	**		96CC		
		75 (518)	3	**		97.5CC		
90 (621)	3	**	99CC	23 (87)				
12,000 Sq. Ft. EDR 3,000 lb./hr. (1,361 kg/hr)	12 (45)	15* (103)	1/3	1/3	3/4 (19)	121.5CC	14†† (53)	2 (51)
		20* (138)	1/3	1/2		122CC		
		25* (172)	1/2	3/4		122.5CC		
		30* (207)	3/4	1 1/2		123CC		
		40 (276)	1	**		124CC	14†† (53)	
		50 (345)	1 1/2	**		125CC		
		60 (414)	2	**		126CC		
		75 (518)	3	**		127.5CC		
90 (621)	5	**	129CC	23 (87)				
15,000 Sq. Ft. EDR 3,750 lb./hr. (1,701 kg/hr)	15 (57)	15* (103)	1/3	1/2	3/4 (19)	151.5CC	14†† (53)	2 (51)
		20* (138)	1/3	3/4		152CC		
		25* (172)	1/2	1		152.5CC		
		30* (207)	3/4	1 1/2		153CC		
		40 (276)	1	**		154CC	14†† (53)	
		50 (345)	1 1/2	**		155CC		
		60 (414)	2	**		156CC		
		75 (518)	3	**		157.5CC		
90 (621)	5	**	159CC	23 (87)				
22,000 Sq. Ft. EDR 5,500 lb./hr. (2,495 kg/hr)	22 (83)	15* (103)	1/3	1/2	1 1/2 (38)	221.5CC	23 (87)	2 (51)
		20* (138)	1/2	3/4		222CC		
		25* (172)	3/4	1		222.5CC		
		30* (207)	3/4	1 1/2		223CC		
		40 (276)	1 1/2	**		224CC	23 (87)	
		50 (345)	2	**		225CC		
		60 (414)	3	**		226CC		
		75 (518)	3	**		227.5CC		
90 (621)	5	**	229CC	23 (87)				
30,000 Sq. Ft. EDR 7,500 lb./hr. (3,402 kg/hr)	30 (114)	15 (103)	1/2	3/4	1 1/2 (38)	301.5CC	36 (136)	3 (76)
		20 (138)	3/4	3/4		302CC		
		25 (172)	3/4	1 1/2		302.5CC		
		30 (207)	1	1 1/2		303CC		
		40 (276)	1 1/2	**		304CC	36 (136)	
		50 (345)	2	**		305CC		
		60 (414)	3	**		306CC		
		75 (518)	5	**		307.5CC		
90 (621)	5	**	309CC	36 (136)				
37,000 Sq. Ft. EDR 9,250 lb./hr. (4,196 kg/hr)	37 (140)	15 (103)	1/2	3/4	1 1/2 (38)	371.5CC	36 (136)	3 (76)
		20 (138)	3/4	1		372CC		
		25 (172)	3/4	1 1/2		372.5CC		
		30 (207)	1 1/2	1 1/2		373CC		
		40 (276)	2	**		374CC	36 (136)	
		50 (345)	3	**		375CC		
		60 (414)	3	**		376CC		
		75 (518)	5	**		377.5CC		
90 (621)	5	**	379CC	36 (136)				
45,000 Sq. Ft. EDR 11,250 lb./hr. (5,103 kg/hr)	45 (170)	15 (103)	3/4	3/4	1 1/2 (38)	451.5CC	36 (136)	3 (76)
		20 (138)	1	1		452CC		
		25 (172)	1	1 1/2		452.5CC		
		30 (207)	1 1/2	2		453CC		
		40 (276)	2	**		454CC	36 (136)	
		50 (345)	3	**		455CC		
		60 (414)	3	**		456CC		
		75 (518)	5	**		457.5CC		
90 (621)	5	**	459CC	36 (136)				

† Sq. Ft. EDR / 4 = Lb./hr. Condensate

* Maximum Condensate Temperature: 209°F (98°C) 3500 RPM ONLY.

** 3500 RPM is standard. 1750 RPM is not available.

†† 3500 RPM units to 50 psi discharge pressure use "B" design receiver as standard.

3500 RPM units 60 psi or more use "A" design receiver. 1750 RPM units use "A" design receiver.

SYSTEM CAPACITY†	PUMP CAPACITY GPM (L/M)	DISCHARGE PRESSURE PSIG (kPa)	MOTOR HORSEPOWER		DISCHARGE SIZE IN. (mm)	SERIES CC™ CONDENSATE UNITS		
			3500 RPM	1750 RPM		MODEL NUMBER	RECEIVER CAPACITY GAL. (L)	INLET SIZE IN. (mm)
60,000 Sq. Ft. EDR 15,000 lb./hr. (6,804 kg/hr)	60 (227)	15 (103)	1	1	2 (51)	601.5CC	52 (197)	3 (76)
		20 (138)	1½	1½		602CC		
		25 (172)	1½	1½		602.5CC		
		30 (207)	2	2		603CC		
		40 (276)	3	**		604CC		
		50 (345)	3	**		605CC		
		60 (414)	5	**		606CC		
		75 (518)	5	**		607.5CC		
90 (621)	7½	**	609CC					
75,000 Sq. Ft. EDR 18,750 lb./hr. (8,505 kg/hr)	75 (284)	15 (103)	1½	1½	2 (51)	751.5CC	75 (284)	4 (102)
		20 (138)	1½	1½		752CC		
		25 (172)	2	2		752.5CC		
		30 (207)	3	**		754CC		
		50 (345)	5	**		755CC		
		60 (414)	5	**		756CC		
		75 (518)	7½	**		757.5CC		
		90 (621)	7½	**		759CC		
90,000 Sq. Ft. EDR 24,250 lb./hr. (11,000 kg/hr)	90 (341)	15 (103)	1½	1½	2 (51)	901.5CC	75 (284)	4 (102)
		20 (138)	2	2		902CC		
		25 (172)	2	2		902.5CC		
		30 (207)	3	3		903CC		
		40 (276)	5	**		904CC		
		50 (345)	5	**		905CC		
		60 (414)	7½	**		906CC		
		75 (518)	7½	**		907.5CC		
112,000 Sq. Ft. EDR 28,000 lb./hr. (12,701 kg/hr)	112 (424)	15 (103)	1½	2	2 (51)	1121.5CC	120 (454)	4 (102)
		20 (138)	2	2		1122CC		
		25 (172)	3	3		1122.5CC		
		30 (207)	3	3		1123CC		
		40 (276)	5	**		1124CC		
		50 (345)	5	**		1125CC		
		60 (414)	7½	**		1126CC		
		75 (518)	10	**		1127.5CC		
150,000 Sq. Ft. EDR 37,500 lb./hr. (17,010 kg/hr)	150 (568)	15 (103)	3	2	2 (51) for 3500 RPM units	1501.5CC	120 (454)	4 (102)
		20 (138)	3	3		1502CC		
		25 (172)	5	5		1502.5CC		
		30 (207)	5	5		1503CC		
		40 (276)	7½	**	3 (76) for 1750 RPM units	1504CC		
		50 (345)	7½	**		1505CC		
		60 (414)	10	**		1506CC		
		75 (518)	10	**		1507.5CC		

† $\frac{\text{Sq. Ft. EDR}}{4} = \text{Lb./hr. Condensate}$

**3500 RPM is standard. 1750 RPM is not available.

STANDARD UNIT FEATURES:

- Cast Iron Receiver, sizes 14 gallon (53L) and larger have provision for second pump. Receiver sized for 1 minute net storage.
- Cast Iron Receivers are warranted for 20 years from date of shipment against failure due to corrosion.
- Centrifugal Pump(s) with drip-proof motors. Pump capacity sized 2 times system return rate.
- Float switch(es).

ORDERING INSTRUCTIONS:

Specify basic Model No., RPM, single or duplex, phase, operating voltage, special features. Note: TEFC and explosion proof motors available. The motor horsepower requirement is often greater using explosion proof as they have unity service factor. A horsepower increase is not necessary using TEFC motors.

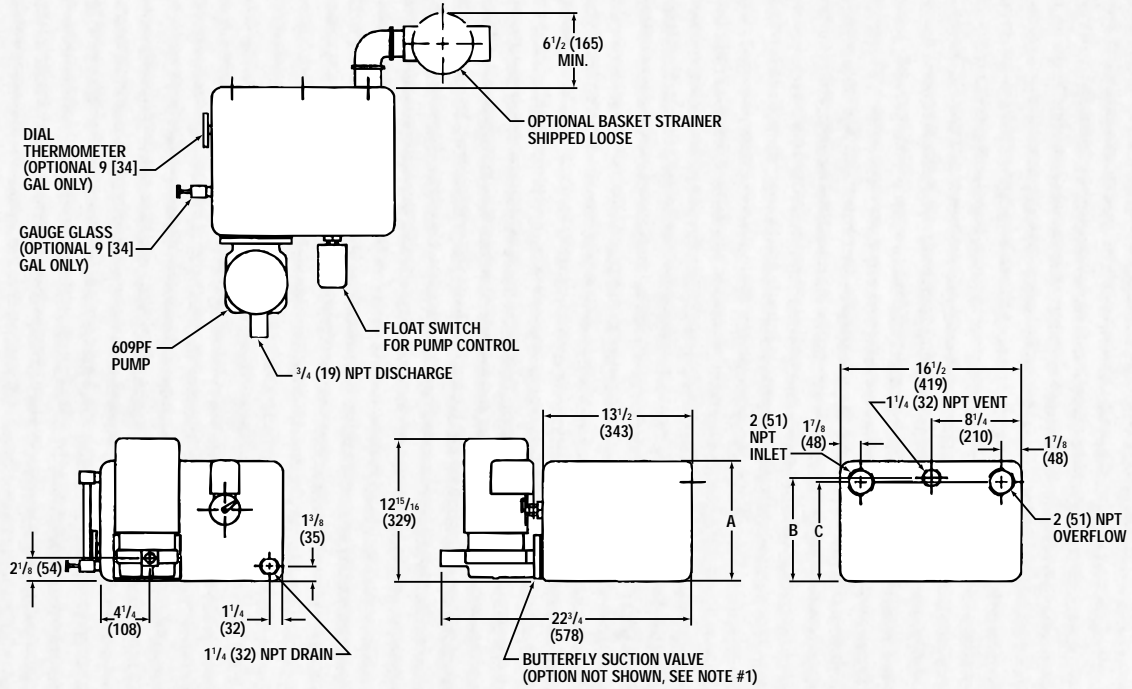
OPTIONAL FEATURES AVAILABLE AS SPECIFIED:

- Water level gauge w/shut-off valve*
- Dial Thermometer*
- Inlet Basket Strainer
- Discharge Pressure Gauges

- NEMA 4 or NEMA 7 Float Switches
- Mechanical Alternator provides sequencing of duplex pumps and standby of second pump on high level. (NEMA 4 or 7 mechanical alternators available on receiver sizes 36 gallons [136L] and larger)
- Control Panels, see page 4. (Control Panels cannot be mounted on 6 & 9 gallon [23 & 34L] receivers, use 14 gallon [53L] minimum)
- Suction Butterfly Valve
3" (76mm) (Available for pump capacities to 75 gpm [284L/M])
- Suction Butterfly Valve
3½" (89mm) (Available for pump capacities to 76 to 115 gpm [288 to 435L/M])
- TEFC or Explosion Proof Motors
- High Level Float Switch/Standby Float Switch (Consult factory for arrangement)
- Lifting Eyes (Available on Receiver sizes 23 gallon [87L] and larger)
- Tapping/openings not drilled on 9 or 14 gallon (34 or 53L) unless option is specified.

*Not available on 6 gallon (23L) receivers.

**6 & 9 GALLON RECEIVER WITH 609PF PUMP
2DCC25**

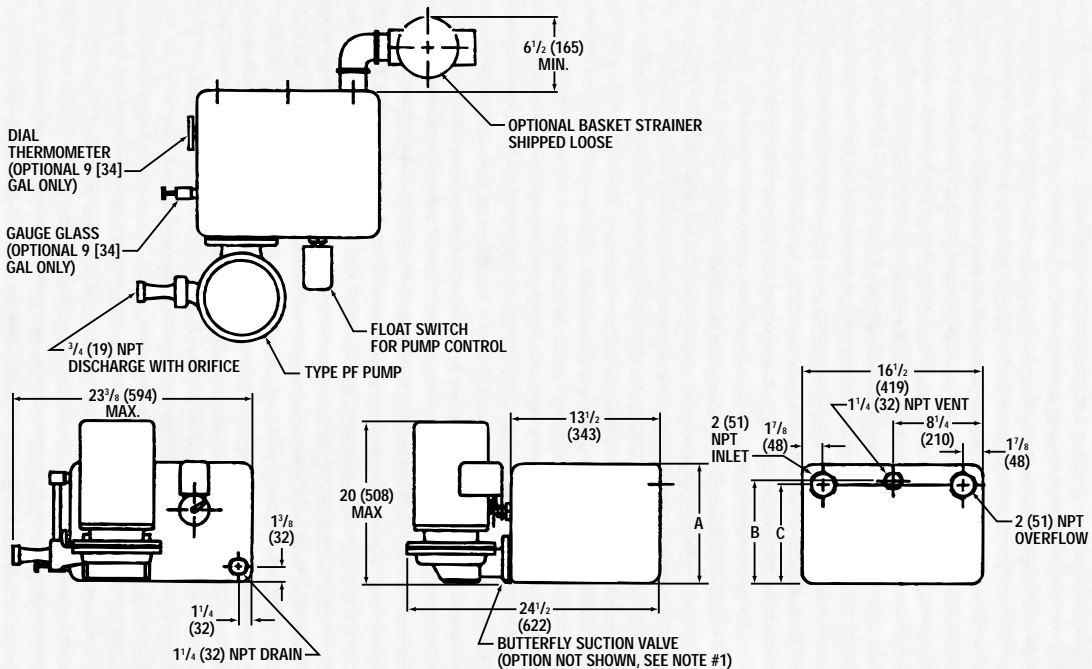


GAL. (L)	DIMENSIONS IN INCHES (mm)		
	A	B	C
6 (23)	8 ⁹ / ₁₆ (217)	7 ¹ / ₁₆ (179)	6 ¹¹ / ₁₆ (170)
9 (34)	10 ⁷ / ₈ (276)	9 ³ / ₈ (238)	9 (229)

Note:

1. For optional Butterfly Suction Valve, add 2" (51mm) to 22³/₄" (578mm) dimension.
2. Optional Discharge Pressure Gauges (not shown) shipped loose.

**6 & 9 GALLON RECEIVER WITH ALL OTHER PF PUMPS (EXCEPT 609PF)
2DCC26**

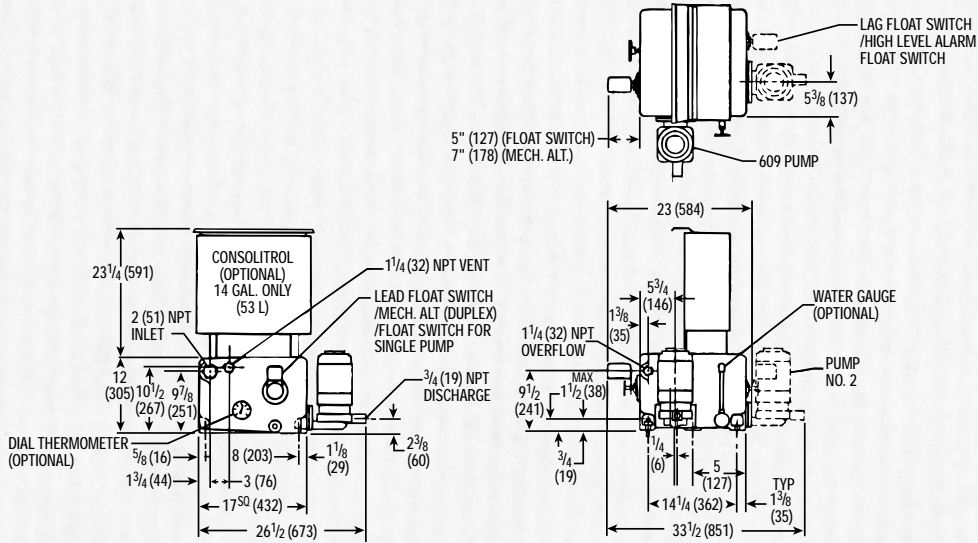


GAL. (L)	DIMENSIONS IN INCHES (mm)		
	A	B	C
6 (23)	8 ⁹ / ₁₆ (217)	7 ¹ / ₁₆ (179)	6 ¹¹ / ₁₆ (170)
9 (34)	10 ⁷ / ₈ (276)	9 ³ / ₈ (238)	9 (229)

Note:

1. For optional Butterfly Suction Valve, add 2" (51mm) to 22³/₄" (578mm) dimension.
2. Optional Discharge Pressure Gauges (not shown) shipped loose.

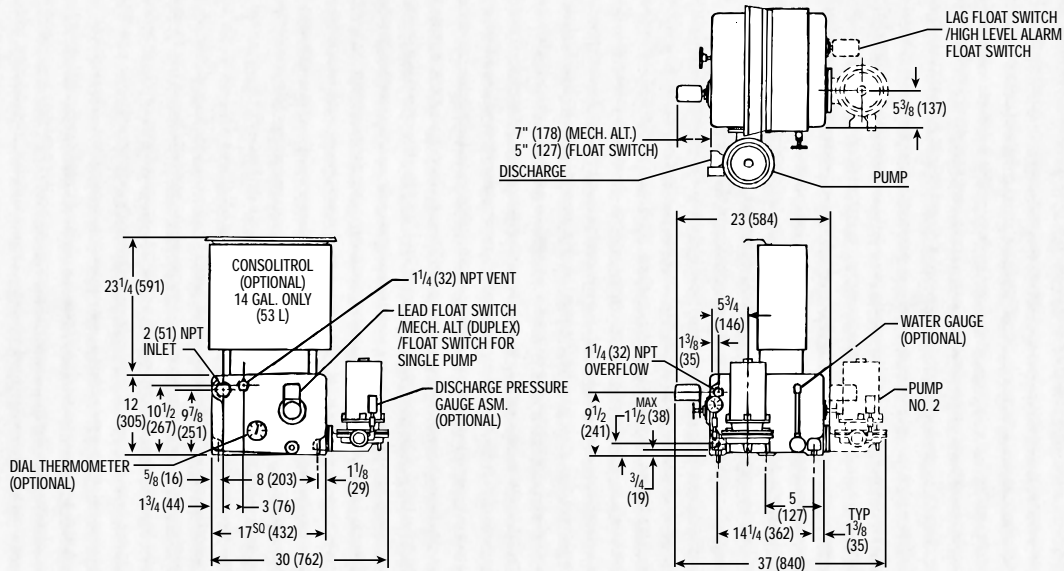
**14 GALLON "A" DESIGN RECEIVER (PUMPS ON DIFFERENT SIDES) WITH 609PF PUMP
2DCC11**



Note:

1. Optional equipment furnished at extra cost when ordered.
2. Optional Discharge Pressure Gauge ASM and Inlet Basket Strainer shipped loose.
3. Optional Butterfly Valve requires the addition of 2" (51mm) to G (duplex) and H dimensions.
4. Pump discharge varies with pump specification.

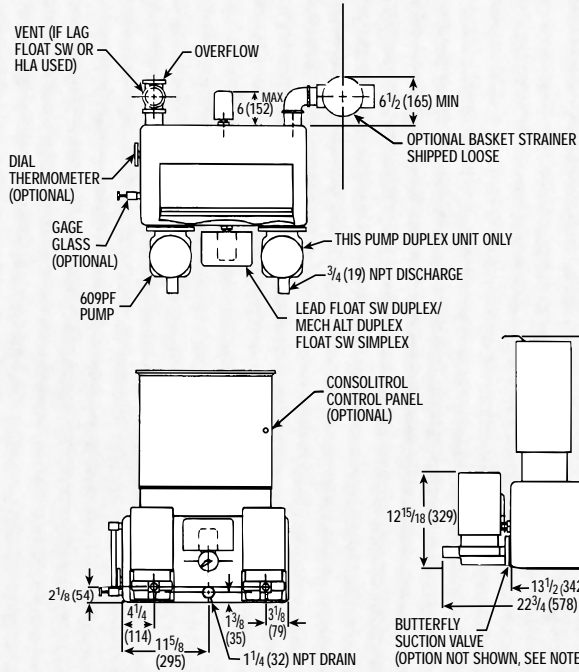
**14 GALLON "A" DESIGN RECEIVER (PUMPS ON DIFFERENT SIDES)
WITH ALL OTHER PF PUMPS (EXCEPT 609PF). STANDARD FOR ALL 1750 RPM.
STANDARD FOR 3500 RPM UNITS 60PSI OR HIGHER DISCHARGE PRESSURE
2DCC12**



Note:

1. Optional equipment furnished at extra cost when ordered.
2. Optional Inlet Basket Strainer shipped loose.
3. Optional Butterfly Valve requires the addition of 2" (51mm) to G (duplex) and H dimensions.
4. Pump discharge varies with pump specification.

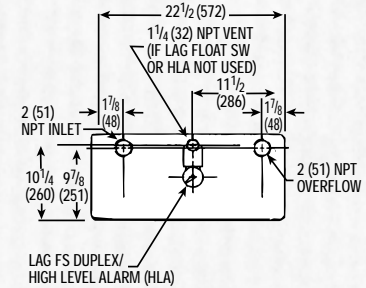
**14 GALLON "B" DESIGN RECEIVER (PUMPS ON SAME SIDE) WITH 609PF PUMP
2DCC27**



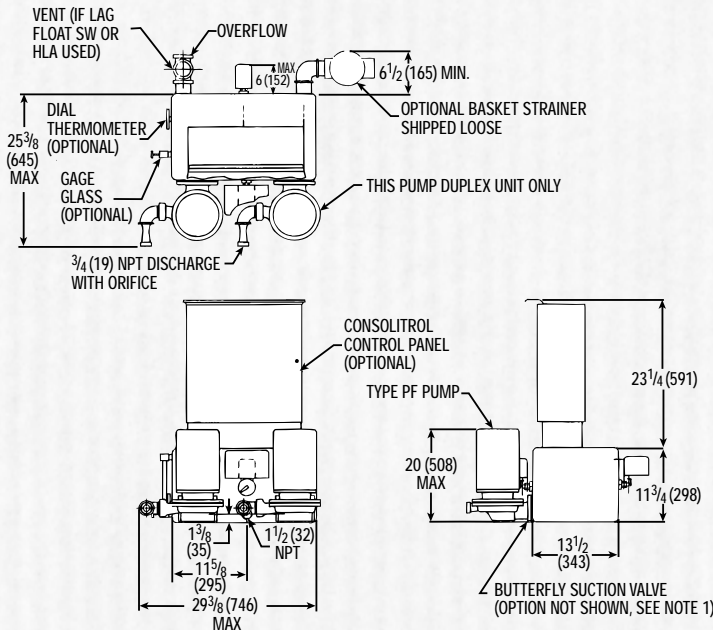
ALL DIMENSIONS IN INCHES (mm)

Note:

1. For optional Butterfly Suction Valve, add 2" (51mm) to 22 3/4" (578mm) dimension.
2. Optional Discharge Pressure Gauges (not shown) shipped loose.



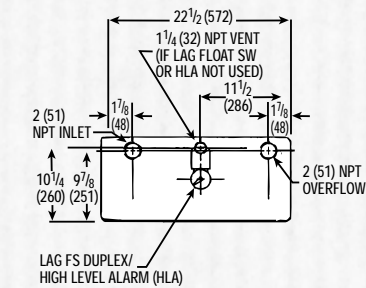
**14 GALLON "B" DESIGN RECEIVER (PUMPS ON SAME SIDE) WITH ALL OTHER
PF PUMPS (EXCEPT 609PF). STANDARD FOR 3500 RPM UP TO 50 PSI DISCHARGE PRESSURE
2DCC28**



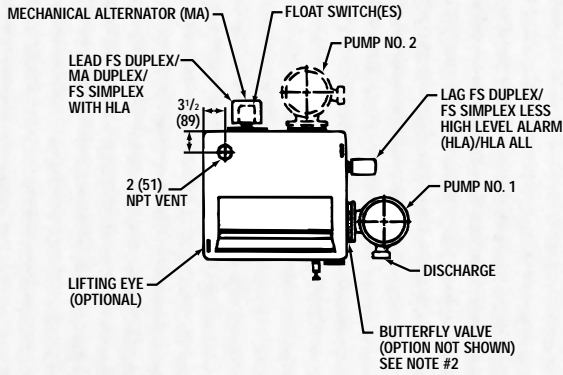
ALL DIMENSIONS IN INCHES (mm)

Note:

1. For optional Butterfly Suction Valve, add 2" (51mm) to 24 1/2" (622mm) dimension.
2. Optional Discharge Pressure Gauge(s) (not shown) shipped loose.



23 GALLON 2DCC13



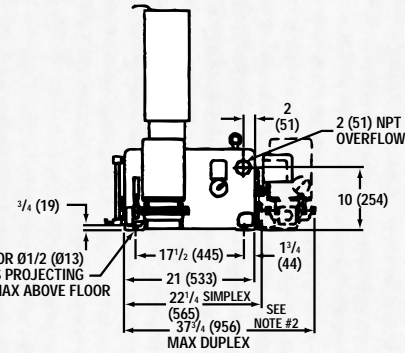
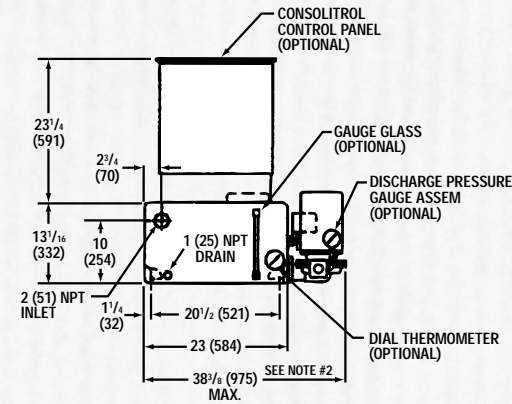
ALL DIMENSIONS IN INCHES (mm)

Note:

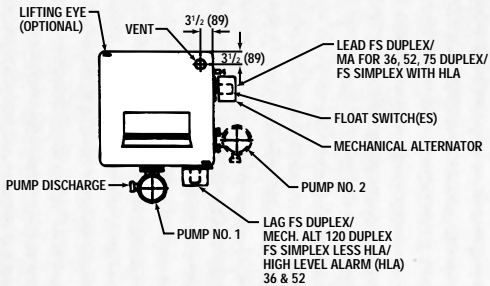
1. Optional Inlet Basket Strainer shipped loose.
2. Optional Butterfly Valve(s) requires the addition of 2" (51mm) to overall dimension.

Receiver Capacity:

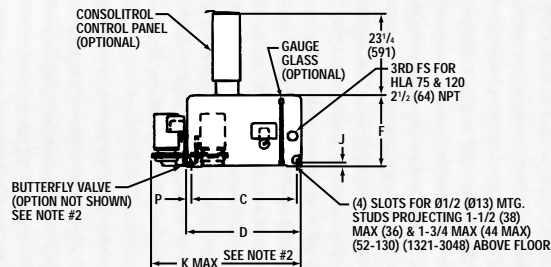
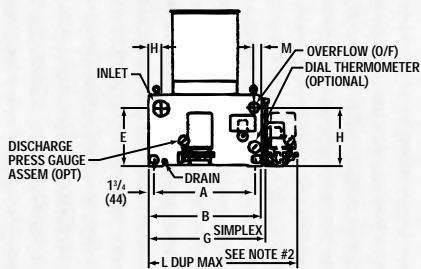
Gross 23 Gallons (87L)
Net 16 Gallons (61L)



36-120 GALLON 2DCC14



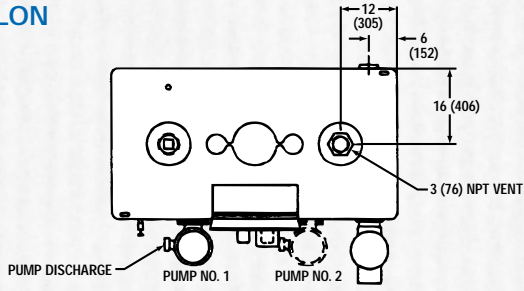
REC. CAP		DIMENSIONS IN INCHES (mm)																
		VENT & O/F	INLET	A	B	C	D	E	F	G	H	J	K MAX	L MAX	M	N	P	DRAIN
36 (136L)	25 (95L)	2 (51)	3 (76)	21 1/4 (540)	24 3/4 (629)	21 1/2 (546)	24 (610)	13 (330)	15 13/16 (402)	26 5/16 (668)	2 1/2 (64)	3/4 (19)	38 (965)	37 (940)	11 5/16 (49)	12 1/2 (318)	1 1/4 (32)	1 (25)
52 (197L)	33 (125L)	2 (51)	3 (76)	24 1/4 (616)	27 3/4 (705)	25 1/4 (641)	27 3/4 (705)	14 (356)	16 13/16 (427)	29 5/16 (745)	2 7/8 (73)	1 (25)	41 (1041)	40 3/4 (1035)	11 5/16 (49)	13 1/2 (343)	1 1/4 (32)	1 (25)
75 (284L)	48 (182L)	2 1/2 (64)	4 (102)	27 3/4 (705)	31 3/4 (806)	29 3/4 (756)	31 1/4 (794)	16 (406)	19 13/16 (503)	32 13/16 (833)	3 1/2 (89)	1 (25)	44 1/2 (1130)	44 1/2 (1130)	23 1/16 (56)	15 7/32 (387)	1 1/4 (32)	1 (25)
120 (454L)	91 (344L)	2 1/2 (64)	4 (102)	36 1/4 (921)	39 3/4 (1010)	30 3/4 (781)	32 3/4 (832)	20 (508)	24 (610)	41 3/16 (1046)	4 (102)	1 (25)	48 3/8 (1229)	55 3/8 (1407)	2 1/2 (64)	19 7/32 (488)	1 (25)	2 1/2 (64)



Note:

1. Optional Inlet Basket Strainer shipped loose.
2. Optional Butterfly Valve(s) requires addition to the overall dimension as follows:
2" for 0-75 GPM (51mm for 0-284-l/m)
5" for 76-115 GPM (122mm for 288-2135-l/m)
3. All openings are NPT.

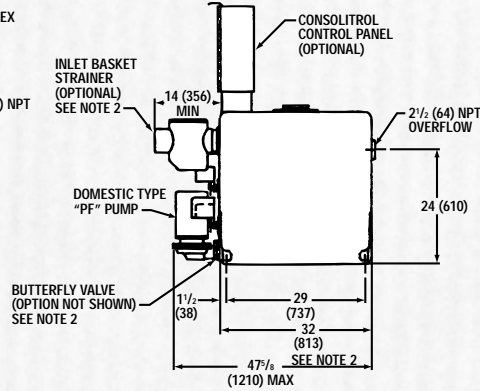
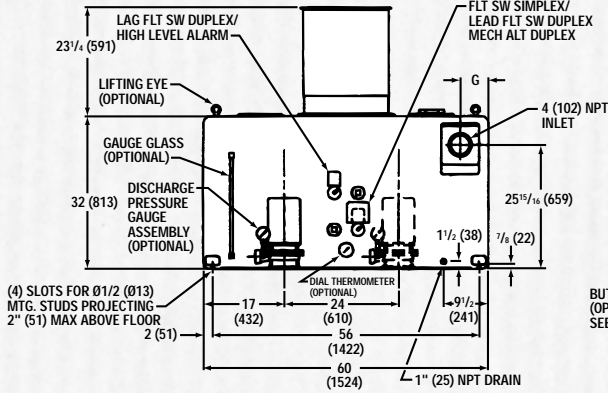
**250 GALLON
2DCC15**



ALL DIMENSIONS IN INCHES (mm)

Note:

1. Optional Basket Strainer shipped loose.
2. Optional Butterfly Valve(s) requires addition to the overall dimension as follows:
 2" for 0-75 GPM (51mm for 0-284^{l/m})
 5" for 76-115 GPM (127mm for 288-435^{l/m})



OPTIONAL ELECTRIC CONTROLS

Description of Optional Panel Components

- Magnetic Starters must be used on all 3 phase motors and single phase motors over 2 HP.
- Disconnect Switches and Circuit Breakers. Either fuses or a circuit breaker is required ahead of the starters to protect against short circuits. A disconnect switch or circuit breaker also provides a means of shutting off power for service.
- Control Power Switching Relay – should be supplied in Duplex or Triplex units when individual pump disconnect switches are specified. This relay is recommended in order to maintain control power to the water makeup system in the event pump #1 disconnect switch is turned off or pump #1 fails. In this event the control power will be automatically supplied by pump #2.

- Selector Switches – “Auto-Off-Hand” selector switches provide a means of shutting off pumps and a means of testing in the “Hands” position. “Off-Hand-Lead-Lag” selector switches may be furnished on duplex units with 2 float switches to provide manual alteration.
- Electric Alternator may be furnished on duplex units to provide automatic sequencing of lead pump. Use only when magnetic starters are provided and only with 2 float switches.
- Transformer is required by the National Electrical Code to reduce control voltage when power supply exceeds 250 volts. A transformer is recommended when voltage exceeds 130 volts. Refer to local codes for requirements.
- Pilot Lights – Pump running pilot lights are available to indicate pump operation.
- Audible Alarm – An alarm to indicate low or high water level may be furnished. A separate tank mounted level switch should be provided with an alarm.

Specified Panel Components to be furnished with unit at extra cost.

Standard panels are supplied with NEMA 2 enclosures and are U.L. listed unless otherwise specified.



Domestic Pump

Domestic Pump
 8200 N. Austin Avenue
 Morton Grove, IL 60053
 Phone: (847) 966-3700
 Facsimile: (847) 966-9052
<http://fhs.ittind.com>

