

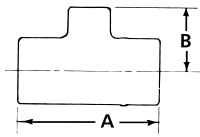
Copper Red Ring Monoflo® Fittings



Copper Red Ring Monoflo Fittings let you use a single pipe to serve as both supply and return main.



- Connect risers to the main, assuring proper diversion of water to each heating unit regardless of type and its position in the system.
- Recommended for most installations including cast iron non-ferrous baseboards, free-standing radiation or convectors.
- Only one fitting is needed for most installations for adequate diversion for upfeed radiation. For most applications, a second fitting can be used if higher resistance is required.



Dimensions & Weights

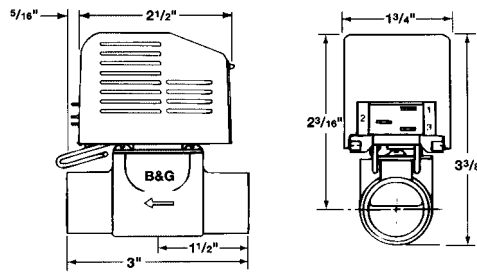
Part No.	Size - Inches	Dimensions - Inches (mm)		Cv Ratings*		Approx. Shpg. Wt. lbs. (Kg)
		A	B	1 FTG	2 FTG	
108119	3/4 x 1/2**	2 5/16 (59)	1 1/32 (26)	4.2	-	1/4 (0.1)
108120	1 x 1/2	2 3/4 (70)	1 7/32 (31)			
108121	1 x 3/4	2 29/32 (74)	1 7/16 (37)	14.5	8.7	
108122	1 1/4 x 1/2	2 15/16 (75)	1 9/32 (33)			1/2 (0.2)
108123	1 1/4 x 3/4	3 7/32 (82)	1 1/2 (38)	24	15.5	
108124	1 1/2 x 3/4	3 7/16 (87)	1 21/32 (42)			
108125	1 1/2 x 1	3 5/8 (92)	1 7/8 (48)	39	25	1 1/4 (0.6)
108126	2 x 3/4	3 7/8 (99)	2 (51)			
108127	2 x 1	4 3/8 (111)	2 5/32 (55)	80	55	1 3/4 (0.8)

* With side branch plugged ** Return only
Maximum working pressure 150 PSIG (1,034 kPa) - Maximum operating temperature 300° F (149° C).

Comfort-Trol™ Zone Control Valve

Comfort-Trol Zone Control Valve is specially designed to meet the most demanding requirements of residential, institutional and commercial hydronic heating and cooling systems.

- Silent -running heat motor saves power via intermittent energizing.
- Unique double torsion spring opens and closes smoothly, prevents water hammering, assures positive shut-off.
- Leaf-type stack switch with blade terminals allow fast installation and no soldering.
- Compact design and ultra-quiet operation is ideal for installation under baseboards or wherever space is limited.
- Available in 3/4" sweat body connections.
- Maximum working pressure 125 psig.
- Fluid temperature range 40°F to 240°F



Model No.	Part No.	Size Sweat	Voltage Rating 50/60 Hz, 1	VA Rating	Approx. Shpg. Wt.
CTS-7524	109017	3/4"	24 Volt	15	1.0 lbs.

Inline Air Separator

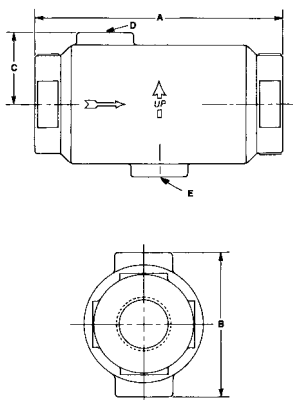
Description
The B&G In-Line Air Separator is specifically designed to efficiently separate air from circulating water in hydronic heating and cooling systems to assure quiet operation.

Operating Data
Maximum working pressure175 psig (1,207 kPa)
Maximum operating temperature 300°F (149°C)

Construction
One Piece Cast Iron



Dimensions & Weights



Model No.	Part No.	Size NPT	Max Flow (GPM)	Dimensions - Inches (mm)					Approx. Shpg. Wt. (Lbs)
				A	B	C	D	E	
IAS -1	112118	1"	15	6-1/8	3-1/2	1-3/4	1/8 NPT		3-3/4
IAS - 1-1/4	112119	1-1/4"	25	(156)	(89)	(45)			3-1/2
IAS- 1-1/2	112097	1-1/2"	35	8-1/8	4-1/2	2-1/4		1/2 NPT	8-1/2
IAS- 2	112098	2"	50	(207)	(114)	(57)	3/4 NPT		7-1/2
IAS- 2-1/2	112099	2-1/2"	75	10-1/8	6-3/8	3-3/16			23
IAS- 3	112100	3"	125	(257)	(257)	(81)			21-1/2

Dimensions are approximate and subject to change. Contact factory for certified dimensions.