

FIG. 7012

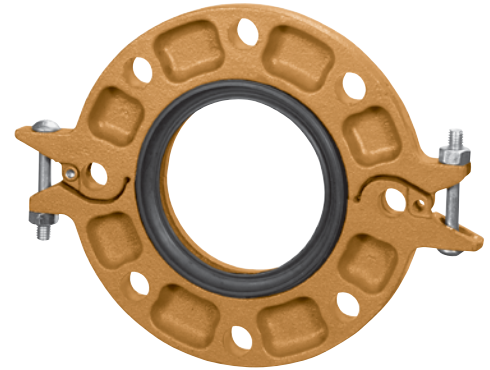
Gruvlok Flanges

The Gruvlok® Fig. 7012 Flange allows direct connection of Class 125 or Class 150 flanged components to a grooved piping system. The two interlocking halves of the 2" thru 12" sizes of the Gruvlok Flange are hinged for ease of handling, and are drawn together by a latch bolt which eases assembly on the pipe. Precision machined bolt holes, key and mating surfaces assure concentricity and flatness to provide exact fit-up with flanged, lug, and wafer styles of pipe system equipment. A specially designed gasket provides a leak-tight seal on both the pipe and the mating flange face.

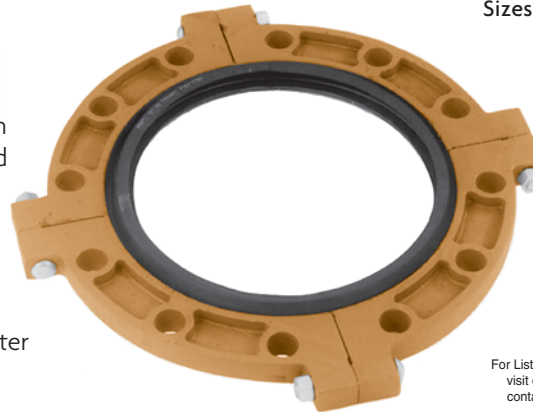
The 14" thru 24" sizes of the Gruvlok Fig. 7012 Flange are cast in four segments. A sleek profile gasket design allows quick and easy assembly of the Gruvlok Flange onto the pipe.

All Gruvlok Fig. 7012 Flanges have designed-in anti-rotation tines which bite into and grip the sides of the pipe grooves to provide a secure, rigid connection.

The Gruvlok Fig. 7012 Flange requires the use of a steel adapter insert when used against rubber faced surfaces, wafer/lug design valves and serrated or irregular sealing surfaces. In copper systems a phenolic adapter insert is required, in place of the steel adapter insert. (See Installation and Assembly Instructions Section or contact your Anvil Rep. for details.)



Sizes 2" - 12"



Sizes 14" - 24"



For Listings/Approval Details and Limitations, visit our website at www.anvilintl.com or contact an Anvil® Sales Representative.

MATERIAL SPECIFICATIONS

LATCH BOLT/NUT (2" - 12")

SEGMENT BOLT/NUT (14" - 24"):

Heat treated, zinc electroplated, carbon steel oval neck track bolts conforming to ASTM A 183 and zinc electroplated heavy hex nuts of carbon steel conforming to ASTM A 563 Grade A or Grade B, or J995 Grade 2.

METRIC BOLTS & HEAVY HEX NUTS:

Heat treated, zinc electroplated oval-neck track head bolts made of carbon steel with mechanical properties per ISO 898-1 Class 8.8. Hex nuts are zinc electroplated followed by a yellow chromate dip.

STAINLESS STEEL BOLTS & NUTS:

Stainless steel bolts and nuts are also available. Contact an Anvil Representative for more information.

HOUSING:

Ductile Iron conforming to ASTM A 536, Grade 65-45-12.

COATINGS:

Rust inhibiting paint Color: ORANGE (standard), Red (optional)

Hot Dipped Zinc Galvanized (optional)

Other Colors Available (IE: RAL3000 and RAL9000)

For other Coating requirements contact an Anvil Representative.

GASKETS: Materials

Properties as designated in accordance with ASTM D 2000

Grade "E" EPDM (Green color code)

-40°F to 230°F (Service Temperature Range)(-40°C to 110°C)

Recommended for water service, diluted acids, alkalies solutions, oil-free air and many other chemical services.

NOT FOR USE IN PETROLEUM APPLICATIONS.

Grade "EP" EPDM (Green and Red color code)

-40°F to 250°F (Service Temperature Range)(-40°C to 121°C)

Recommended for water service, diluted acids, alkalies solutions, oil-free air and many other chemical services.

NOT FOR USE IN PETROLEUM APPLICATIONS.

For hot water applications the use of Gruvlok Extreme Temperature lubricant is recommended. NSF-61 Certified for cold and hot water applications up through 12'.

Grade "T" Nitrile (Orange color code)

-20°F to 180°F (Service Temperature Range)(-29°C to 82°C)

Recommended for petroleum applications. air with oil vapors and vegetable and mineral oils.

NOT FOR USE IN HOT WATER.

LUBRICATION:

Standard Gruvlok

Gruvlok Xtreme™ (Do Not use with Grade "L")