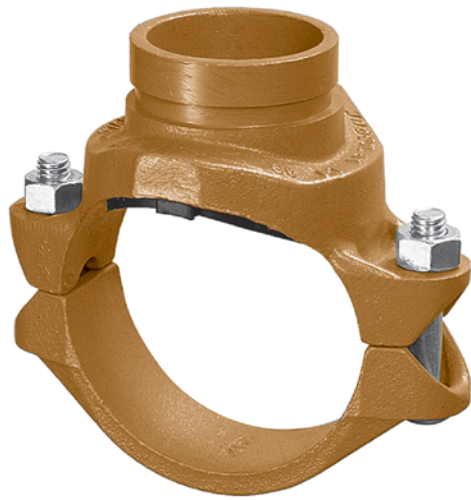


# FIG. 7046

## Clamp-T, Grooved Branch



For Listings/Approval Details and Limitations, visit our website at [www.anvilintl.com](http://www.anvilintl.com) or contact an Anvil® Sales Representative.

The Gruvlok Clamp-T provides a quick and easy outlet at any location along the pipe. A hole drilled or cut in the pipe to receive the locating collar of the Clamp-T is all that is required. The full, smooth outlet area provides for optimum flow characteristics.

The Clamp-T housing is specially engineered to conform to the pipe O.D. and the Clamp-T gasket providing a leak tight reliable seal in both positive pressure and vacuum conditions. The maximum working pressure for all sizes is 500 PSI (34.5 bar) when assembled on standard wall steel pipe.

The Gruvlok Clamp-T provides for a branch or cross connection in light wall or standard wall steel pipe.

Clamp-T cross connections are available in most sizes allowing greater versatility in piping design.

### CLAMP-T FLOW DATA (FRICTIONAL RESISTANCE)

Branch Size	Fig. 7046 Grooved Branch	
	C.V. Value	Equiv. Pipe Length
	In./DN/mm	Ft./Meters
1 1/4 32	5.4	5.0 1.5
1 1/2 40	95	3.5 1.1
2 50	148	4.5 1.4
2 1/2 65	205	7.0 2.1
3 80	294	9.5 2.9
4 100	571	7.0 2.1

## MATERIAL SPECIFICATIONS

### ANSI BOLTS & HEAVY HEX NUTS:

Heat treated, oval neck track head bolts conforming to ASTM A 183 Grade 2 with a minimum tensile strength of 110,000 psi and heavy hex nuts of carbon steel conforming to ASTM A 563 Grade A or Grade B, or J995 Grade 2. Bolts and nuts are provided zinc electroplated as standard.

### METRIC BOLTS & HEAVY HEX NUTS:

Heat treated, zinc electroplated oval-neck track head bolts made of carbon steel with mechanical properties per ISO 898-1 Class 8.8. Hex nuts are zinc electroplated followed by a yellow chromate dip.

### U-BOLT:

Cold drawn steel and zinc plated.

### STAINLESS STEEL BOLTS & NUTS:

Stainless Steel Bolts and Nuts are also available. Contact an Anvil Representative for more information.

### HOUSING:

Ductile Iron conforming to ASTM A 536, Grade 65-45-12 or Malleable Iron conforming to ASTM A 47, Grade 32510.

### COATINGS:

Rust inhibiting paint Color: ORANGE (standard)  
Hot Dipped Zinc Galvanized (optional)  
Other Colors Available (IE: RAL3000 and RAL9000)  
For other Coating requirements contact an Anvil Representative for more information.

### GASKETS: Materials

Properties as designated in accordance with ASTM D 2000

#### Grade "E" EPDM (Green color code)

-40°F to 230°F (Service Temperature Range)(-40°C to 110°C)

Recommended for water service, diluted acids, alkalis solutions, oil-free air and many other chemical services.

NOT FOR USE IN PETROLEUM APPLICATIONS.

#### Grade "EP" EPDM (Green and Red color code)

-40°F to 250°F (Service Temperature Range)(-40°C to 121°C)

Recommended for water service, diluted acids, alkalis solutions, oil-free air and many other chemical services.

NOT FOR USE IN PETROLEUM APPLICATIONS.

For hot water applications the use of Gruvlok Extreme Temperature lubricant is recommended. NSF-61 Certified for cold and hot water applications up through 12".

#### Grade "T" Nitrile (Orange color code)

-20°F to 180°F (Service Temperature Range)(-29°C to 82°C)

Recommended for petroleum applications. air with oil vapors and vegetable and mineral oils.

NOT FOR USE IN HOT WATER OR HOT AIR.

### LUBRICATION:

Standard Gruvlok  
Gruvlok Xtreme™ (Do Not use with Grade "L")