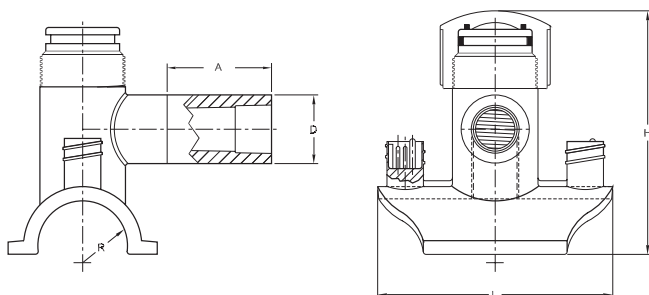


Electrofusion Fittings: Tapping Tees w/Socket Outlet



Single pin fittings also available.

4.7R = 4.7 Pin with Resistor

4.7S = 4.7 Solid Pin

SOCKET FUSION OUTLET DIMENSIONS

Nominal Pipe Outlet	A	D
1/2" CTS	2.22	1.31
3/4" IPS	2.22	1.46

EF TAPPING TEE DIMENSIONS

Nominal Pipe Saddle	H	L
1 1/4" IPS	4.83	4.58
1 1/2" IPS	4.94	4.50
2" IPS	5.06	4.50
3" IPS	5.18	4.58
4" IPS/DIPS	5.93	4.46
6" IPS/DIPS	7.06	4.61
8" IPS/DIPS	4.14	4.60
10" IPS/DIPS	4.14	4.60

(PE 2406/2708) ELECTROFUSION TAPPING TEE w/Socket Outlet

Outlet Size	Main Size	Cutter Size Material	Pin Type	Clamp Type	Part Number	Pack. Qty.	Wt.	CSA
1/2" CTS	1 1/4" IPS	0.5 / Steel	4.7 R	A	5757090	50	0.84	-
1/2" CTS	2" IPS	0.5 / Steel	4.7 R	B	5757091	40	0.88	-
1/2" CTS	3" IPS	0.5 / Steel	4.7 R	C	5757092	40	0.92	-
1/2" CTS	4" IPS	0.5 / Steel	4.7 R	D	5757093	30	1.01	-
1/2" CTS	6" IPS	0.5 / Steel	4.7 R	E	5757094	20	1.26	-
1/2" CTS	8-10" IPS	0.5 / Steel	4.7 R	H	10002864	20	0.85	-
1/2" IPS	1 1/4" IPS	0.5 / Steel	4.7 R	A	10009386	-	-	-
1/2" IPS	2" IPS	0.5 / Steel	4.7 R	B	call	-	-	-
1/2" IPS	3" IPS	0.5 / Steel	4.7 R	C	call	-	-	-
1/2" IPS	4" IPS	0.5 / Steel	4.7 R	D	5757244	30	1.04	-
1/2" IPS	6" IPS	0.5 / Steel	4.7 R	E	call	-	-	-
1/2" IPS	8-10" IPS	0.5 / Steel	4.7 R	H	call	-	-	-

(PE2406/PE2708) ELECTROFUSION TAPPING TEE w/Socket Outlet

Outlet Size	Main Size	Cutter Size Material	Pin Type	Clamp Type	Part Number	Pack. Qty.	Wt.	CSA
3/4" IPS	1 1/4" IPS	0.8 / Steel	4.7 R	A	5757095	50	0.80	-
3/4" IPS	1 1/4" IPS	0.8 / Steel	4.7 R	Underpart	10009386	50	0.80	-
3/4" IPS	2" IPS	0.8 / Steel	4.7 R	B	5757097	-	-	-
3/4" IPS	2" IPS	0.8 / Steel	4.7 R	Underpart	10009393	-	-	-
3/4" IPS	3" IPS	0.8 / Steel	4.7 R	C	5757099	40	0.91	-
3/4" IPS	4" IPS	0.8 / Steel	4.7 R	D	5757100	30	1.00	-
3/4" IPS	6" IPS	0.8 / Steel	4.7 R	E	5757102	20	1.18	YES
3/4" IPS	8-10" IPS	0.5 / Steel	4.7 R	H	call	-	-	-