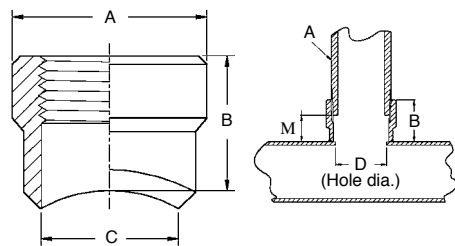
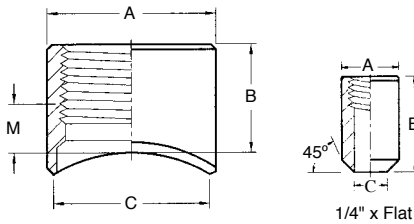
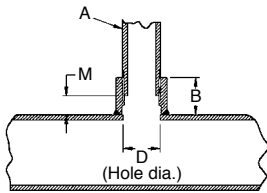


MODEL

71 FEMALE THREADED OUTLET FITTING

Model 71 Female Threaded Outlet Fittings are designed to provide a threaded outlet at any desired location along the header. Made of highly weldable SAE-J403 forged steel the Model 71 is designed for single pass welding. The Model 71 features a counter bore and a 1.6mm land around the full circumference of the mouth, which helps ensure full penetration welds and minimize the likelihood of any burn through or distortion that might be caused by excessive heat. The Model 71 is UL / cUL listed and FM approved for services up to 300 psi (20 bar).



Outlet Size mm / in	Header Size Range in	Outlet OD A mm / in	Outlet Length B mm / in	Counter-bore C mm / in	Make-Up M mm / in	Hole Saw Dia. (Ref.) D mm / in	Max. Hole Dia. (Ref.) D mm / in	Approx. Weight	
								Kgs	Lbs
8 ¼	1¼ - 8	19.1	31.8	10.7	20.5	9.5	10.3	0.04	0.09
		0.75	1.25	0.42	0.81	⅜	19/32		
15 ½	1¼ - 1½	28.6	25.4	20.6	12.7	17.5	20.6	0.07	0.15
	1½ - 2								
	2 - 2½								
	2½ - 8								
20 ¾	1¼ - 1½	34.9	25.4	26.9	12.7	22.2	25.4	0.09	0.20
	1½ - 2								
	2 - 2½								
	2½ - 8								
25 1	1¼ - 1½	40.0	28.6	31.8	12.7	28.6	31.8	0.11	0.24
	1½ - 2								
	2 - 2½								
	2½ - 3								
	3 - 4								
	5 - 8								
32 1¼	1½ - 2	48.5	31.8	41.0	12.7	34.9	38.1	0.19	0.42
	2 - 2½								
	2½ - 3								
	3 - 4								
40 1½	3 - 4	55.0	31.8	47.0	22.2	41.3	44.5	0.24	0.53
	5 - 8								
	2½								
	3								
50 2	4	67.0	38.1	58.6	22.2	54.0	57.2	0.39	0.86
	5								
	6								
	8								
65 (73.0 OD) 2½	3	79.0	44.5	70.1	28.6	63.5	66.7	0.38	0.84
	4								
	5								
	6								
80 3	6	98.0	53.3	87.0	38.1	79.4	82.6	0.77	1.70
	8								
	3								
	4								
100 4	5	125.2	60.3	113.3	50.8	104.8	108.0	1.32	2.90
	6								
	8								
	4								

The precision machined mouth is designed to fit the first listed header size perfectly, and allows only a small gap along the longitudinal centerline of the second listed header size.

Each outlet size shown in the following table fits the same header pipe size. Special attention is required to the hole size (D) in

the header pipe, which is one size smaller than the regular hole size.

Outlet Size mm / in	Header Size Range in	Outlet OD A mm / in	Outlet Length B mm / in	Counter-bore C mm / in	Make-Up M mm / in	Hole Saw Dia. (Ref.) D mm / in	Max. Hole Dia. (Ref.) D mm / in	Approx. Weight				
								Kgs	Lbs			
32 1¼	1¼	48.5	31.8	36.5	12.7	31.8	34.9	0.19	0.42			
		1.91	1.25	1.44	0.50	1¼	1¼					
40 1½	1½	55.0	31.8	42.5	22.2	38.1	41.3	0.21	0.46			
		2.06	1.25	1.67	0.88	1½	1½					
50 2	2	67.0	38.1	54.5	22.2	50.8	54.0	0.34	0.75			
		2.64	1.50	2.15	0.88	2	2½					
65 (73.0 OD) 2½	2½	79.0	44.5	65.2	28.6	60.3	63.5	0.49	1.08			
		3.11	1.75	2.57	1.13	2½	2½					
		80 3	98.0	53.3	81.0	38.1	76.1			79.4	0.80	1.76
		3.86										
100 4	4	125.2	63.3	107.0	50.8	101.6	104.8	1.40	3.08			
		4.93	2.37	4.21	2.00	4	4½					