

MODEL

# S35 SHOULDERED FLEXIBLE COUPLING

The **Shurjoint** Model S35 coupling is a flexible type shouldered coupling for general applications for use on Type A shouldered pipe ends. The housing segments are made

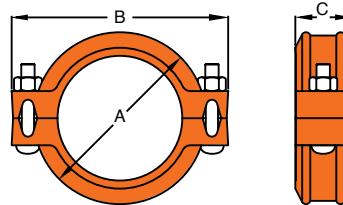
of ductile iron to ASTM A536 Gr. 65-45-12 and or A395 Gr. 65-45-15 and are normally supplied in hot-dip galvanized. The standard rubber gasket is Grade T Nitrile.



### Pressure-Temperature Rating

Nom. Rating	Working Pressure (STD)	Max. Service Temperature
Class 150	300 psi @ 100°F 20 Bar @ 38°C	EPDM: 230°F / 110°C Nitrile: 180°F / 82°C

\*Working pressure is based on standard wall carbon steel pipe.  
\*Proof test pressure: 1.5 times the working pressure, non-shock cold water.  
\*Burst pressure is engineered minimum 3 times the working pressure.



Nominal Size mm / in	Pipe OD mm / in	Working Pressure Bar / PSI	Dimensions			Allowable Pipe End Separation mm / in	Deflection (°)	Bolt Size in	Weight Kgs / Lbs
			A mm / in	B mm / in	C mm / in				
50	60.3	20	99.0	139.0	46.0	3.2	2° 43'	3/8" x 2 1/8"	1.1
2	2.375	300	3.90	5.47	1.81	0.13			2.4
80	88.9	20	129.0	168.0	46.0	3.2	1° 53'	1/2" x 3"	1.5
3	3.500	300	5.08	6.61	1.81	0.13			3.9
100	114.3	20	159.0	200.0	50.0	3.2	1° 29'	1/2" x 3"	2.2
4	4.500	300	6.26	7.87	1.97	0.13			4.8
150	165.1	20	213.0	267.0	50.0	3.2	1° 2'	5/8" x 3 1/2"	3.5
6	6.500	300	8.39	10.50	1.97	0.13			5.0
150	168.3	20	219.0	279.0	50.0	3.2	1° 1'	5/8" x 3 1/2"	3.8
6	6.625	300	8.62	11.00	1.97	0.13			5.3
200	219.1	20	273.0	335.0	60.0	3.2	0° 47'	3/4" x 4 3/4"	5.9
8	8.625	300	10.75	13.19	2.36	0.13			7.4

MODEL

# SD-28 SHOULDERED TOGGLE COUPLING

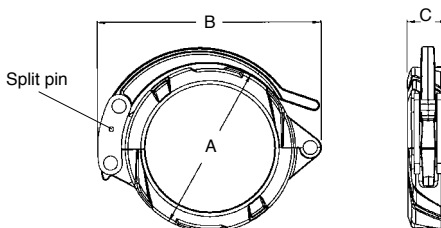
The **Shurjoint** Model SD-28 coupling is designed to connect shouldered-end pipe with Type A rings for services where frequent assembly and disassembly is desired or required. The housing segments are hinged with a lever handle for easy installation. The

use of a split pin prevents accidental opening of the couplings. The housing segments are made of ductile iron to ASTM A536 Gr. 65-45-12 and or A395 Gr. 65-45-15 and are normally supplied in hot-dip galvanized. The standard rubber gasket is Grade T Nitrile.

### Pressure-Temperature Rating

Nom. Rating	Working Pressure (STD)	Max. Service Temperature
Class 150	300 psi @ 100°F 20 Bar @ 38°C	EPDM: 230°F / 110°C Nitrile: 180°F / 82°C

\*Working pressure is based on standard wall carbon steel pipe.  
\*Proof test pressure: 1.5 times the working pressure, non-shock cold water.  
\*Burst pressure is engineered minimum 3 times the working pressure.



Nominal Size mm / in	Pipe OD mm / in	Max. Working Pressure Bar / PSI	Dimensions			Allowable Pipe End Separation (E) mm / in	Deflection (°)	Weight Kgs / Lbs
			A mm / in	B mm / in	C mm / in			
50	60.3	20	86.5	112.5	49	3.2	2° - 43'	1.3
2	2.375	300	39.32	4.43	1.93	0.125		2.8
80	88.9	20	126	164	49	3.2	1° - 53'	2.0
3	3.500	300	4.96	6.46	1.93	0.125		4.4
100	114.3	20	160	214	52	3.2	1° - 29'	3.0
4	4.500	300	6.30	8.43	2.05	0.125		6.6
150	165.1	20	214	283	52	3.2	1° - 2'	4.3
6	6.500	300	8.43	11.14	2.05	0.125		6.5
150	168.3	20	217	282	52	3.2	1° - 1'	4.5
6	6.625	300	8.54	11.10	2.05	0.125		9.9
200	219.1	20	278	360	60	3.2	0° - 47'	8.3
8	8.625	300	10.95	14.17	2.36	0.125		18.3