

MODEL

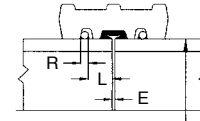
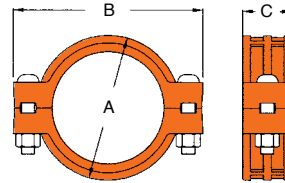
RH-1000 1000 PSI RING JOINT COUPLING

The **Shurjoint** Model RH-1000 coupling is a high pressure ring joint coupling for use with Sch. 40, Sch. 80 and heavier wall carbon steel pipe.

The coupling is comprised of two ductile iron heavy-wall housings, rubber gasket (EPDM or Nitrile) and two heat-treated track bolts

and nuts which provide a fully restrained joint and a maximum working pressure of 1,000 psi (70 Bar) depending on the pipe used.

Two steel weld rings are factory supplied with the coupling. Steel rings must always be fully welded on both sides.



Pipe O.D.

Pressure-Temperature Rating

| Nom. Rating | Working Pressure (STD) | Max. Service Temperature |
|-------------|---------------------------------|----------------------------------------------|
| Class 400 | 1000 psi @100°F 70 Bar @38°C | EPDM: 230°F / 110°C Nitrile: 180°F / 82°C |

*Working pressure is based on standard wall carbon steel pipe.
*Proof test pressure: 1.5 times the working pressure, non-shock cold water.
*Burst pressure is engineered minimum 3 times the working pressure.

| Nominal Size mm / in | Pipe OD mm / in | Max. Working Pressure Bar / PSI | Dimensions ¹ | | | Bolt / Nut | | Deflection (°) | Pipe-end Preparation | | | Weight Kgs / Lbs |
|-------------------------|--------------------|------------------------------------|-------------------------|--------------|--------------|------------|------------|-------------------|----------------------|--------------|--------------------|---------------------|
| | | | A mm / in | B mm / in | C mm / in | No. | Size in | | R mm / in | L mm / in | E (max) mm / in | |
| 200 | 219.1 | 70 | 282 | 372 | 98 | 2 | 1" x 140 | 0° - 18' | 12 | 25 | 3.2 | 18.1 |
| 8 | 8.625 | 1000 | 11.10 | 14.65 | 3.86 | 2 | 1" x 140 | 0° - 18' | 0.47 | 1 | 0.13 | 39.8 |
| 250 | 273.0 | 70 | 340 | 430 | 108 | 2 | 1" x 165 | 0° - 38' | 12 | 25 | 3.2 | 26.0 |
| 10 | 10.750 | 1000 | 13.32 | 16.93 | 4.25 | 2 | 1" x 165 | 0° - 38' | 0.47 | 1 | 0.13 | 57.2 |
| 300 | 323.9 | 70 | 415 | 510 | 106 | 2 | 1" x 165 | 0° - 32' | 12 | 25 | 3.2 | 33.0 |
| 12 | 12.750 | 1000 | 16.33 | 20.07 | 4.17 | 2 | 1" x 165 | 0° - 32' | 0.47 | 1 | 0.13 | 72.6 |

*Bolt & nuts are UNC threaded.

MODEL

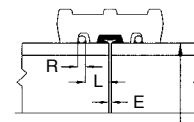
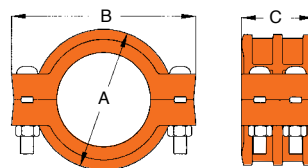
RX-3000 3000 PSI RING JOINT COUPLING

The **Shurjoint** Model RX-3000 coupling is a high pressure ring joint coupling for use with Sch. 80, 120 and heavier wall carbon steel pipe.

The coupling is comprised of two ductile iron heavy-wall housings, rubber gasket (EPDM or Nitrile) and four heat-treated track bolts

and nuts which provide a fully restrained joint and a maximum working pressure up to 3,000 psi (210 Bar) depending on the pipe used.

Two steel weld rings are factory supplied with the coupling. Steel rings must always be fully welded on both sides.



Pipe O.D.

Pressure-Temperature Rating

| Nom. Rating | Working Pressure | Max. Service Temperature |
|-------------|----------------------------------|----------------------------------------------|
| Class 1500 | 3000 psi @100°F 210 Bar @38°C | EPDM: 230°F / 110°C Nitrile: 180°F / 82°C |

*Working pressure is based on API 5L X65 line pipe.
*Proof test pressure: 1.5 times the working pressure, non-shock cold water.
*Burst pressure is engineered minimum 2 times the working pressure.

| Nominal Size mm / in | Pipe OD mm / in | Max. Working Pressure Bar / PSI | Dimensions | | | Bolt / Nut* | | Pipe-end Preparation | | | Weight Kgs / Lbs |
|-------------------------|--------------------|------------------------------------|--------------|--------------|--------------|-------------|------------|----------------------|--------------|--------------|---------------------|
| | | | A mm / in | B mm / in | C mm / in | No. | Size in | R mm / in | L mm / in | E mm / in | |
| 200 | 219.1 | 210 | 300 | 394 | 148 | 2 | 1½ x 130 | 12 | 31 | 3 | 35.87 |
| 8 | 8.625 | 3000 | 11.81 | 15.51 | 5.83 | 2 | 1½ x 130 | 0.472 | 1.22 | ½ | 78.92 |
| 250 | 273.0 | 210 | 380 | 481 | 152 | 4 | 1½ x 165 | 16 | 31 | 3 | 52.78 |
| 10 | 10.748 | 3000 | 14.96 | 18.93 | 5.98 | 4 | 1½ x 165 | 0.63 | 1.22 | ½ | 116.36 |
| 300 | 323.9 | 210 | 470 | 572 | 173 | 4 | 1½" x 160 | 16 | 31 | 3 | 96.24 |
| 12 | 12.752 | 3000 | 18.5 | 22.48 | 6.81 | 4 | 1½" x 160 | 0.63 | 1.22 | ½ | 212.27 |

*Bolt & nuts are UNC threaded. @ ½" (12.7mm) and ¾" (15.9mm) steel rings are also available upon request.